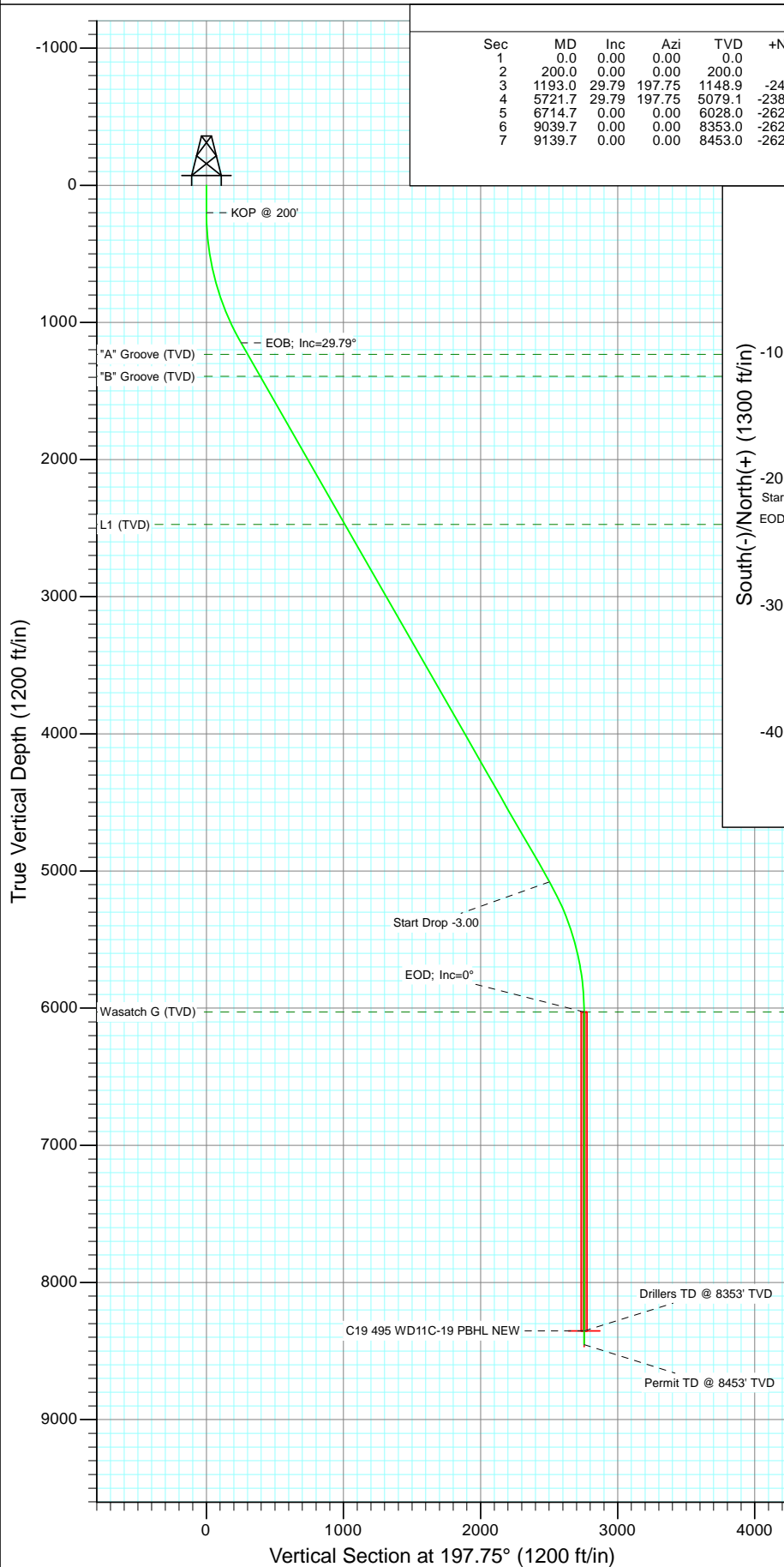


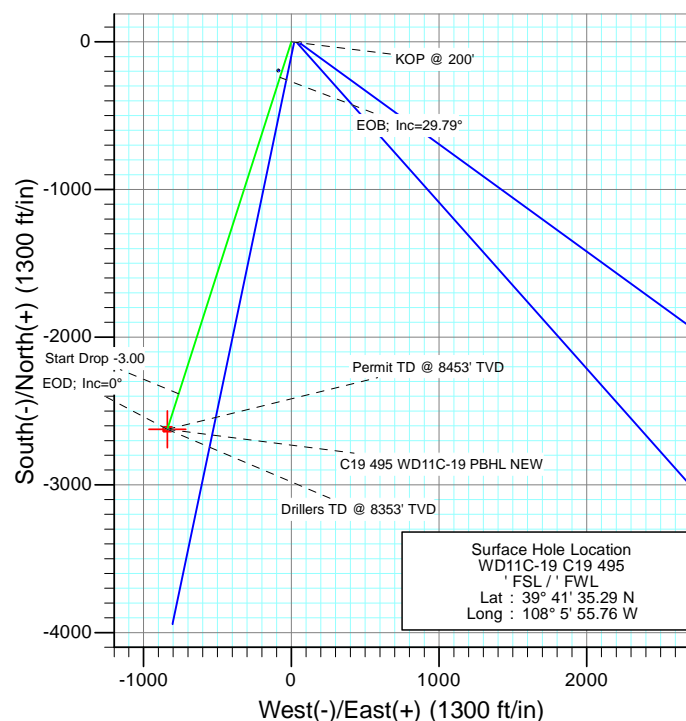


Project: Story Gulch  
Site: C19 495  
Well: WD11C-19 C19 495  
Wellbore: DD  
Design: Plan #2



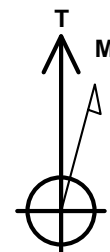
#### SECTION DETAILS

Sec	MD	Inc	Azi	TVD	+N/-S	+E/-W	Dleg	TFace	VFace	Target
1	0.0	0.00	0.00	0.0	0.0	0.0	0.00	0.00	0.0	
2	200.0	0.00	0.00	200.0	0.0	0.0	0.00	0.00	0.0	
3	1193.0	29.79	197.75	1148.9	-240.4	-76.9	3.00	197.75	252.4	
4	5721.7	29.79	197.75	5079.1	-2383.3	-762.7	0.00	0.00	2502.4	
5	6714.7	0.00	0.00	6028.0	-2623.7	-839.6	3.00	180.00	2754.8	
6	9039.7	0.00	0.00	8353.0	-2623.7	-839.6	0.00	0.00	2754.8	C19 495 WD11C-19 PBHL NEW
7	9139.7	0.00	0.00	8453.0	-2623.7	-839.6	0.00	0.00	2754.8	



#### FORMATION TOP DETAILS

TVDPath	MDPath	Formation
1233.0	1290.0	"A" Groove (TVD)
1393.0	1474.3	"B" Groove (TVD)
2473.0	2718.8	L1 (TVD)
6028.0	6714.7	Wasatch G (TVD)



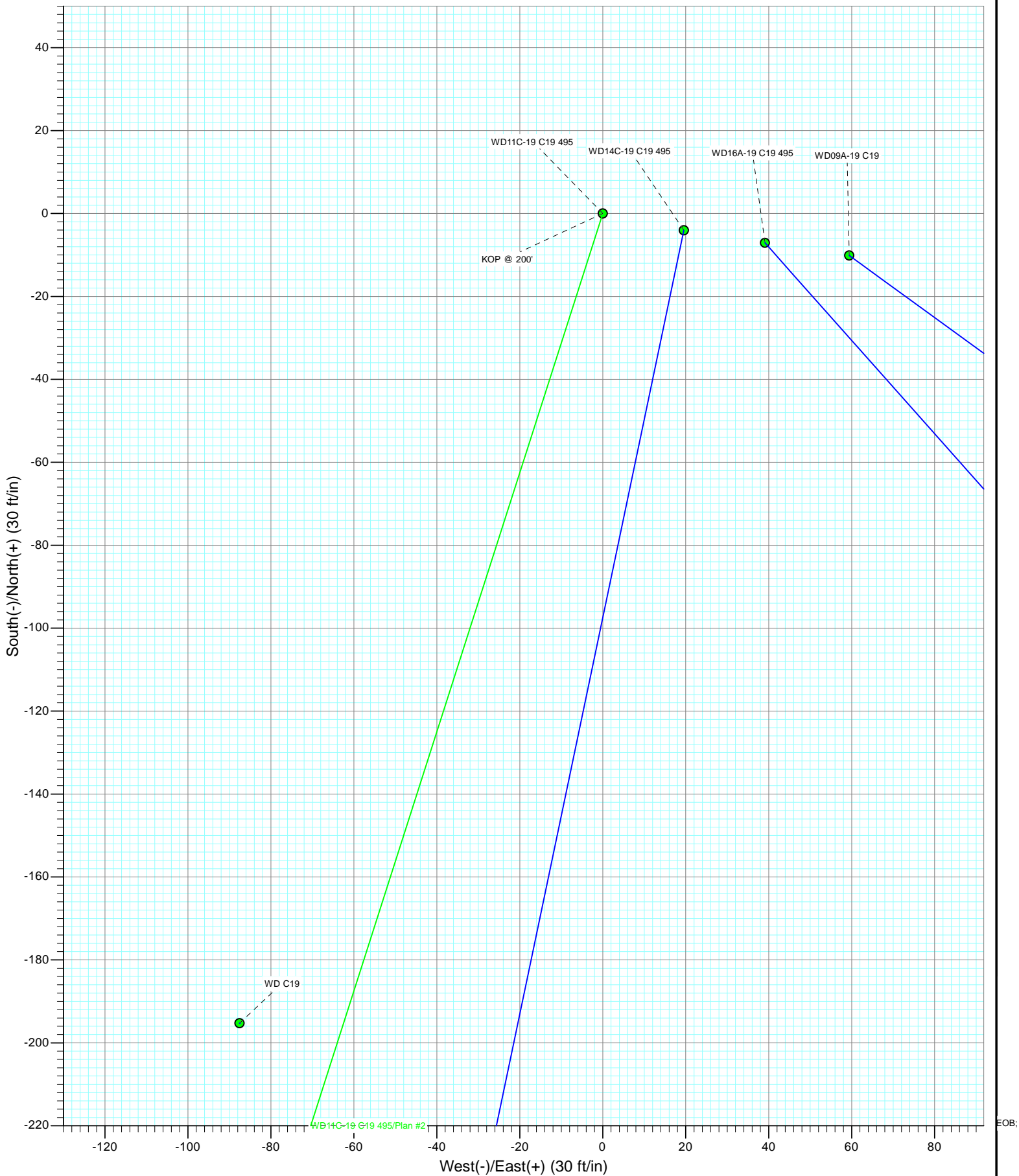
Azimuths to True North  
Magnetic North: 10.42°

Magnetic Field  
Strength: 52321.0nT  
Dip Angle: 65.88°  
Date: 7/5/2011  
Model: IGRF2010

Type	Target	Azimuth	Origin Type	N/S	E/W	From TVD
Target	C19 495 WD11C-19 PBHL NEW	197.75	Slot	0.0	0.0	0.0
Name	C19 495 WD11C-19 PBHL NEW	TVD	+N/-S	+E/-W	Latitude	Longitude
		8353.0	-2623.7	-839.6	39° 41' 35.29 N	108° 5' 55.76 W



Project: Story Gulch  
Site: C19 495  
Well: WD11C-19 C19 495  
Wellbore: DD  
Design: Plan #2



## Planning Report

<b>Database:</b>	USA EDM 5000 Multi Users DB	<b>Local Co-ordinate Reference:</b>	Well WD11C-19 C19 495
<b>Company:</b>	EnCana Oil & Gas (USA) Inc	<b>TVD Reference:</b>	KBE @ 8153.0ft (Original Well Elev)
<b>Project:</b>	Story Gulch	<b>MD Reference:</b>	KBE @ 8153.0ft (Original Well Elev)
<b>Site:</b>	C19 495	<b>North Reference:</b>	True
<b>Well:</b>	WD11C-19 C19 495	<b>Survey Calculation Method:</b>	Minimum Curvature
<b>Wellbore:</b>	DD		
<b>Design:</b>	Plan #2		

<b>Project</b>	Story Gulch		
<b>Map System:</b>	US State Plane 1983	<b>System Datum:</b>	Mean Sea Level
<b>Geo Datum:</b>	North American Datum 1983		
<b>Map Zone:</b>	Colorado Central Zone		

Site		C19 495			
Site Position:		Northing:	1,687,624.39 ft	Latitude:	39° 41' 33.36 N
From:	Lat/Long	Easting:	2,268,676.50 ft	Longitude:	108° 5' 56.88 W
Position Uncertainty:	0.0 ft	Slot Radius:	13.200 in	Grid Convergence:	-1.64 °

Well	WD11C-19 C19 495					
Well Position	+N/-S	0.0 ft	Northing:	1,687,817.08 ft	Latitude:	39° 41' 35.29 N
	+E/-W	0.0 ft	Easting:	2,268,769.60 ft	Longitude:	108° 5' 55.76 W
Position Uncertainty		0.0 ft	Wellhead Elevation:	ft	Ground Level:	8,131.0 ft

<b>Wellbore</b>	DD				
<b>Magnetics</b>	<b>Model Name</b>	<b>Sample Date</b>	<b>Declination (°)</b>	<b>Dip Angle (°)</b>	<b>Field Strength (nT)</b>
	IGRF2010	7/5/2011	10.42	65.88	52,321

<b>Design</b>	Plan #2			
<b>Audit Notes:</b>				
<b>Version:</b>	<b>Phase:</b>	PLAN	<b>Tie On Depth:</b>	0.0
<b>Vertical Section:</b>	<b>Depth From (TVD) (ft)</b>	<b>+N/-S (ft)</b>	<b>+E/-W (ft)</b>	<b>Direction (°)</b>
	0.0	0.0	0.0	197.75

<b>Plan Sections</b>										
Measured Depth (ft)	Inclination (°)	Azimuth (°)	Vertical Depth (ft)	+N/-S (ft)	+E/-W (ft)	Dogleg Rate (°/100ft)	Build Rate (°/100ft)	Turn Rate (°/100ft)	TFO (°)	Target
0.0	0.00	0.00	0.0	0.0	0.0	0.00	0.00	0.00	0.00	
200.0	0.00	0.00	200.0	0.0	0.0	0.00	0.00	0.00	0.00	
1,193.0	29.79	197.75	1,148.9	-240.4	-76.9	3.00	3.00	0.00	197.75	
5,721.7	29.79	197.75	5,079.1	-2,383.3	-762.7	0.00	0.00	0.00	0.00	
6,714.7	0.00	0.00	6,028.0	-2,623.7	-839.6	3.00	-3.00	0.00	180.00	
9,039.7	0.00	0.00	8,353.0	-2,623.7	-839.6	0.00	0.00	0.00	0.00	C19 495 WD11C-19 F
9,139.7	0.00	0.00	8,453.0	-2,623.7	-839.6	0.00	0.00	0.00	0.00	

# Planning Report

<b>Database:</b>	USA EDM 5000 Multi Users DB	<b>Local Co-ordinate Reference:</b>	Well WD11C-19 C19 495
<b>Company:</b>	EnCana Oil & Gas (USA) Inc	<b>TVD Reference:</b>	KBE @ 8153.0ft (Original Well Elev)
<b>Project:</b>	Story Gulch	<b>MD Reference:</b>	KBE @ 8153.0ft (Original Well Elev)
<b>Site:</b>	C19 495	<b>North Reference:</b>	True
<b>Well:</b>	WD11C-19 C19 495	<b>Survey Calculation Method:</b>	Minimum Curvature
<b>Wellbore:</b>	DD		
<b>Design:</b>	Plan #2		

Planned Survey									
Measured Depth (ft)	Inclination (°)	Azimuth (°)	Vertical Depth (ft)	+N/-S (ft)	+E/-W (ft)	Vertical Section (ft)	Dogleg Rate (°/100ft)	Build Rate (°/100ft)	Comments / Formations
0.0	0.00	0.00	0.0	0.0	0.0	0.0	0.00	0.00	
100.0	0.00	0.00	100.0	0.0	0.0	0.0	0.00	0.00	
200.0	0.00	0.00	200.0	0.0	0.0	0.0	0.00	0.00	KOP @ 200'
300.0	3.00	197.75	300.0	-2.5	-0.8	2.6	3.00	3.00	
400.0	6.00	197.75	399.6	-10.0	-3.2	10.5	3.00	3.00	
500.0	9.00	197.75	498.8	-22.4	-7.2	23.5	3.00	3.00	
600.0	12.00	197.75	597.1	-39.7	-12.7	41.7	3.00	3.00	
700.0	15.00	197.75	694.3	-62.0	-19.8	65.1	3.00	3.00	
800.0	18.00	197.75	790.2	-89.0	-28.5	93.5	3.00	3.00	
900.0	21.00	197.75	884.4	-120.8	-38.7	126.9	3.00	3.00	
1,000.0	24.00	197.75	976.8	-157.3	-50.3	165.1	3.00	3.00	
1,100.0	27.00	197.75	1,067.1	-198.3	-63.4	208.2	3.00	3.00	
1,193.0	29.79	197.75	1,148.9	-240.4	-76.9	252.4	3.00	3.00	EOB; Inc=29.79°
1,200.0	29.79	197.75	1,154.9	-243.7	-78.0	255.9	0.00	0.00	
1,290.0	29.79	197.75	1,233.0	-286.3	-91.6	300.6	0.00	0.00	"A" Groove (TVD)
1,300.0	29.79	197.75	1,241.7	-291.0	-93.1	305.5	0.00	0.00	
1,400.0	29.79	197.75	1,328.5	-338.3	-108.3	355.2	0.00	0.00	
1,474.3	29.79	197.75	1,393.0	-373.5	-119.5	392.1	0.00	0.00	"B" Groove (TVD)
1,500.0	29.79	197.75	1,415.3	-385.6	-123.4	404.9	0.00	0.00	
1,600.0	29.79	197.75	1,502.1	-433.0	-138.6	454.6	0.00	0.00	
1,700.0	29.79	197.75	1,588.9	-480.3	-153.7	504.3	0.00	0.00	
1,800.0	29.79	197.75	1,675.6	-527.6	-168.8	554.0	0.00	0.00	
1,900.0	29.79	197.75	1,762.4	-574.9	-184.0	603.6	0.00	0.00	
2,000.0	29.79	197.75	1,849.2	-622.2	-199.1	653.3	0.00	0.00	
2,100.0	29.79	197.75	1,936.0	-669.6	-214.3	703.0	0.00	0.00	
2,200.0	29.79	197.75	2,022.8	-716.9	-229.4	752.7	0.00	0.00	
2,300.0	29.79	197.75	2,109.6	-764.2	-244.6	802.4	0.00	0.00	
2,400.0	29.79	197.75	2,196.4	-811.5	-259.7	852.0	0.00	0.00	
2,500.0	29.79	197.75	2,283.1	-858.8	-274.8	901.7	0.00	0.00	
2,600.0	29.79	197.75	2,369.9	-906.1	-290.0	951.4	0.00	0.00	
2,700.0	29.79	197.75	2,456.7	-953.5	-305.1	1,001.1	0.00	0.00	
2,718.8	29.79	197.75	2,473.0	-962.3	-308.0	1,010.4	0.00	0.00	L1 (TVD)
2,800.0	29.79	197.75	2,543.5	-1,000.8	-320.3	1,050.8	0.00	0.00	
2,900.0	29.79	197.75	2,630.3	-1,048.1	-335.4	1,100.5	0.00	0.00	
3,000.0	29.79	197.75	2,717.1	-1,095.4	-350.6	1,150.1	0.00	0.00	
3,100.0	29.79	197.75	2,803.9	-1,142.7	-365.7	1,199.8	0.00	0.00	
3,200.0	29.79	197.75	2,890.6	-1,190.1	-380.8	1,249.5	0.00	0.00	
3,300.0	29.79	197.75	2,977.4	-1,237.4	-396.0	1,299.2	0.00	0.00	
3,400.0	29.79	197.75	3,064.2	-1,284.7	-411.1	1,348.9	0.00	0.00	
3,500.0	29.79	197.75	3,151.0	-1,332.0	-426.3	1,398.6	0.00	0.00	
3,600.0	29.79	197.75	3,237.8	-1,379.3	-441.4	1,448.2	0.00	0.00	
3,700.0	29.79	197.75	3,324.6	-1,426.6	-456.6	1,497.9	0.00	0.00	
3,800.0	29.79	197.75	3,411.4	-1,474.0	-471.7	1,547.6	0.00	0.00	
3,900.0	29.79	197.75	3,498.1	-1,521.3	-486.8	1,597.3	0.00	0.00	
4,000.0	29.79	197.75	3,584.9	-1,568.6	-502.0	1,647.0	0.00	0.00	
4,100.0	29.79	197.75	3,671.7	-1,615.9	-517.1	1,696.6	0.00	0.00	
4,200.0	29.79	197.75	3,758.5	-1,663.2	-532.3	1,746.3	0.00	0.00	
4,300.0	29.79	197.75	3,845.3	-1,710.6	-547.4	1,796.0	0.00	0.00	
4,400.0	29.79	197.75	3,932.1	-1,757.9	-562.6	1,845.7	0.00	0.00	
4,500.0	29.79	197.75	4,018.8	-1,805.2	-577.7	1,895.4	0.00	0.00	
4,600.0	29.79	197.75	4,105.6	-1,852.5	-592.8	1,945.1	0.00	0.00	
4,700.0	29.79	197.75	4,192.4	-1,899.8	-608.0	1,994.7	0.00	0.00	

# Planning Report

<b>Database:</b>	USA EDM 5000 Multi Users DB	<b>Local Co-ordinate Reference:</b>	Well WD11C-19 C19 495
<b>Company:</b>	EnCana Oil & Gas (USA) Inc	<b>TVD Reference:</b>	KBE @ 8153.0ft (Original Well Elev)
<b>Project:</b>	Story Gulch	<b>MD Reference:</b>	KBE @ 8153.0ft (Original Well Elev)
<b>Site:</b>	C19 495	<b>North Reference:</b>	True
<b>Well:</b>	WD11C-19 C19 495	<b>Survey Calculation Method:</b>	Minimum Curvature
<b>Wellbore:</b>	DD		
<b>Design:</b>	Plan #2		

Planned Survey									
Measured Depth (ft)	Inclination (°)	Azimuth (°)	Vertical Depth (ft)	+N/-S (ft)	+E/-W (ft)	Vertical Section (ft)	Dogleg Rate (°/100ft)	Build Rate (°/100ft)	Comments / Formations
4,800.0	29.79	197.75	4,279.2	-1,947.2	-623.1	2,044.4	0.00	0.00	
4,900.0	29.79	197.75	4,366.0	-1,994.5	-638.3	2,094.1	0.00	0.00	
5,000.0	29.79	197.75	4,452.8	-2,041.8	-653.4	2,143.8	0.00	0.00	
5,100.0	29.79	197.75	4,539.6	-2,089.1	-668.6	2,193.5	0.00	0.00	
5,200.0	29.79	197.75	4,626.3	-2,136.4	-683.7	2,243.2	0.00	0.00	
5,300.0	29.79	197.75	4,713.1	-2,183.7	-698.8	2,292.8	0.00	0.00	
5,400.0	29.79	197.75	4,799.9	-2,231.1	-714.0	2,342.5	0.00	0.00	
5,500.0	29.79	197.75	4,886.7	-2,278.4	-729.1	2,392.2	0.00	0.00	
5,600.0	29.79	197.75	4,973.5	-2,325.7	-744.3	2,441.9	0.00	0.00	
5,700.0	29.79	197.75	5,060.3	-2,373.0	-759.4	2,491.6	0.00	0.00	
5,721.7	29.79	197.75	5,079.1	-2,383.3	-762.7	2,502.4	0.00	0.00	Start Drop -3.00
5,800.0	27.44	197.75	5,147.8	-2,419.0	-774.1	2,539.8	3.00	-3.00	
5,900.0	24.44	197.75	5,237.7	-2,460.7	-787.5	2,583.6	3.00	-3.00	
6,000.0	21.44	197.75	5,329.8	-2,497.8	-799.3	2,622.6	3.00	-3.00	
6,100.0	18.44	197.75	5,423.8	-2,530.3	-809.7	2,656.7	3.00	-3.00	
6,200.0	15.44	197.75	5,519.5	-2,558.0	-818.6	2,685.8	3.00	-3.00	
6,300.0	12.44	197.75	5,616.5	-2,581.0	-826.0	2,709.9	3.00	-3.00	
6,400.0	9.44	197.75	5,714.7	-2,599.0	-831.7	2,728.9	3.00	-3.00	
6,500.0	6.44	197.75	5,813.7	-2,612.2	-836.0	2,742.7	3.00	-3.00	
6,600.0	3.44	197.75	5,913.3	-2,620.4	-838.6	2,751.3	3.00	-3.00	
6,700.0	0.44	197.75	6,013.3	-2,623.6	-839.6	2,754.7	3.00	-3.00	
6,714.7	0.00	0.00	6,028.0	-2,623.7	-839.6	2,754.8	3.00	-3.00	EOD; Inc=0° - Wasatch G (TVD)
6,800.0	0.00	0.00	6,113.3	-2,623.7	-839.6	2,754.8	0.00	0.00	
6,900.0	0.00	0.00	6,213.3	-2,623.7	-839.6	2,754.8	0.00	0.00	
7,000.0	0.00	0.00	6,313.3	-2,623.7	-839.6	2,754.8	0.00	0.00	
7,100.0	0.00	0.00	6,413.3	-2,623.7	-839.6	2,754.8	0.00	0.00	
7,200.0	0.00	0.00	6,513.3	-2,623.7	-839.6	2,754.8	0.00	0.00	
7,300.0	0.00	0.00	6,613.3	-2,623.7	-839.6	2,754.8	0.00	0.00	
7,400.0	0.00	0.00	6,713.3	-2,623.7	-839.6	2,754.8	0.00	0.00	
7,500.0	0.00	0.00	6,813.3	-2,623.7	-839.6	2,754.8	0.00	0.00	
7,600.0	0.00	0.00	6,913.3	-2,623.7	-839.6	2,754.8	0.00	0.00	
7,700.0	0.00	0.00	7,013.3	-2,623.7	-839.6	2,754.8	0.00	0.00	
7,800.0	0.00	0.00	7,113.3	-2,623.7	-839.6	2,754.8	0.00	0.00	
7,900.0	0.00	0.00	7,213.3	-2,623.7	-839.6	2,754.8	0.00	0.00	
8,000.0	0.00	0.00	7,313.3	-2,623.7	-839.6	2,754.8	0.00	0.00	
8,100.0	0.00	0.00	7,413.3	-2,623.7	-839.6	2,754.8	0.00	0.00	
8,200.0	0.00	0.00	7,513.3	-2,623.7	-839.6	2,754.8	0.00	0.00	
8,300.0	0.00	0.00	7,613.3	-2,623.7	-839.6	2,754.8	0.00	0.00	
8,400.0	0.00	0.00	7,713.3	-2,623.7	-839.6	2,754.8	0.00	0.00	
8,500.0	0.00	0.00	7,813.3	-2,623.7	-839.6	2,754.8	0.00	0.00	
8,600.0	0.00	0.00	7,913.3	-2,623.7	-839.6	2,754.8	0.00	0.00	
8,700.0	0.00	0.00	8,013.3	-2,623.7	-839.6	2,754.8	0.00	0.00	
8,800.0	0.00	0.00	8,113.3	-2,623.7	-839.6	2,754.8	0.00	0.00	
8,900.0	0.00	0.00	8,213.3	-2,623.7	-839.6	2,754.8	0.00	0.00	
9,000.0	0.00	0.00	8,313.3	-2,623.7	-839.6	2,754.8	0.00	0.00	
9,039.7	0.00	0.00	8,353.0	-2,623.7	-839.6	2,754.8	0.00	0.00	Drillers TD @ 8353' TVD - C19 495 WD11C-19
9,100.0	0.00	0.00	8,413.3	-2,623.7	-839.6	2,754.8	0.00	0.00	
9,139.7	0.00	0.00	8,453.0	-2,623.7	-839.6	2,754.8	0.00	0.00	Permit TD @ 8453' TVD

## Planning Report

<b>Database:</b>	USA EDM 5000 Multi Users DB	<b>Local Co-ordinate Reference:</b>	Well WD11C-19 C19 495
<b>Company:</b>	EnCana Oil & Gas (USA) Inc	<b>TVD Reference:</b>	KBE @ 8153.0ft (Original Well Elev)
<b>Project:</b>	Story Gulch	<b>MD Reference:</b>	KBE @ 8153.0ft (Original Well Elev)
<b>Site:</b>	C19 495	<b>North Reference:</b>	True
<b>Well:</b>	WD11C-19 C19 495	<b>Survey Calculation Method:</b>	Minimum Curvature
<b>Wellbore:</b>	DD		
<b>Design:</b>	Plan #2		

Targets									
Target Name	Dip Angle	Dip Dir.	TVD	+N/-S	+E/-W	Northing	Easting	Latitude	Longitude
- hit/miss target	(°)	(°)	(ft)	(ft)	(ft)	(ft)	(ft)		
- Shape									
C19 495 WD11C-19 PBI	0.00	0.00	8,353.0	-2,623.7	-839.6	1,685,218.49	2,267,855.27	39° 41' 9.36 N	108° 6' 6.50 W
- plan hits target center									
- Rectangle (sides W30.0 H50.0 D0.0)									

Formations					
Measured Depth	Vertical Depth	Name	Lithology	Dip	Dip Direction
(ft)	(ft)			(°)	(°)
1,290.0	1,233.0	"A" Groove (TVD)		0.00	
1,474.3	1,393.0	"B" Groove (TVD)		0.00	
2,718.8	2,473.0	L1 (TVD)		0.00	
6,714.7	6,028.0	Wasatch G (TVD)		0.00	

Plan Annotations				
Measured Depth	Vertical Depth	Local Coordinates		Comment
(ft)	(ft)	+N/-S (ft)	+E/-W (ft)	
200.0	200.0	0.0	0.0	KOP @ 200'
1,193.0	1,148.9	-240.4	-76.9	EOB; Inc=29.79°
5,721.7	5,079.1	-2,383.3	-762.7	Start Drop -3.00
6,714.7	6,028.0	-2,623.7	-839.6	EOD; Inc=0°
9,039.7	8,353.0	-2,623.7	-839.6	Drillers TD @ 8353' TVD
9,139.7	8,453.0	-2,623.7	-839.6	Permit TD @ 8453' TVD