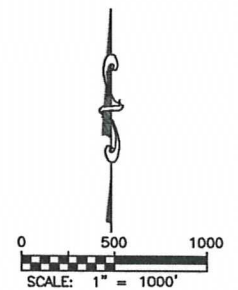
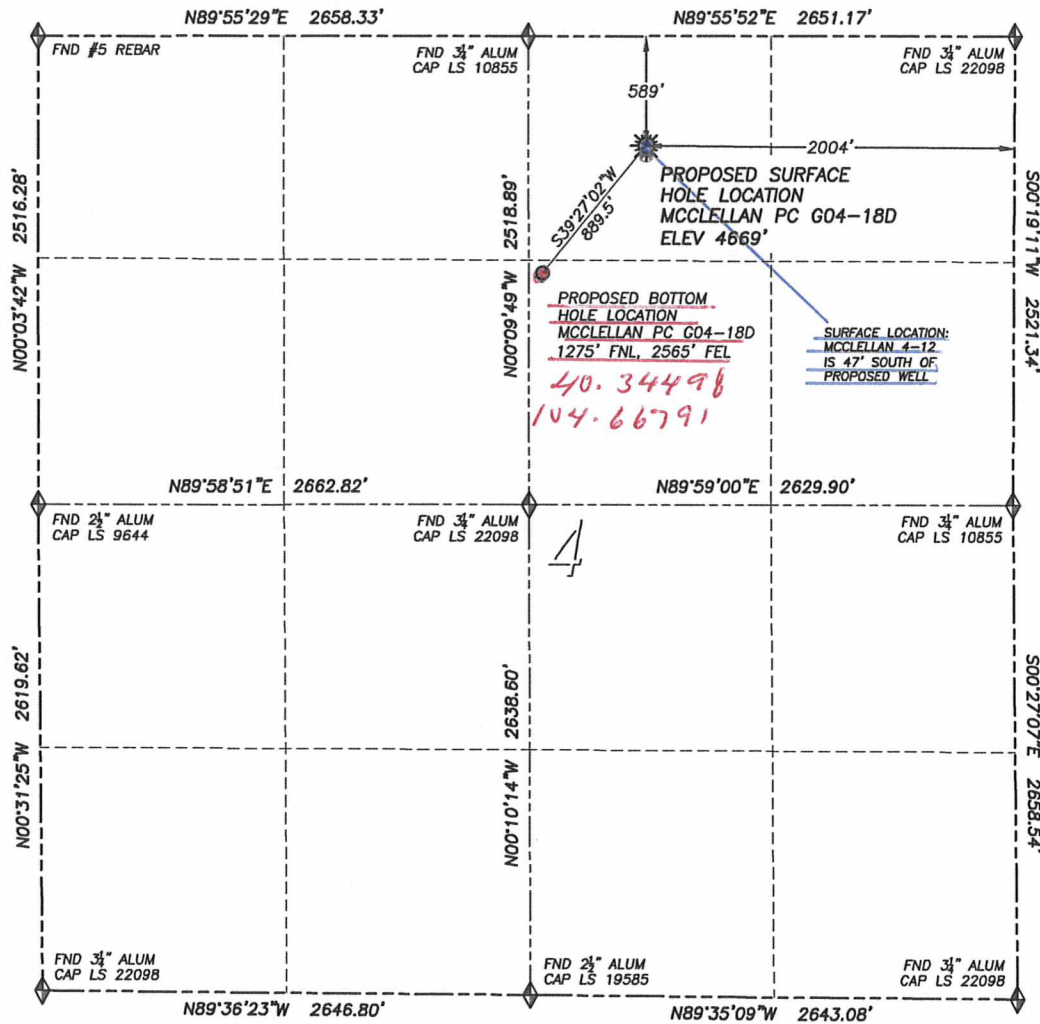


## MULTI-WELL PAD DIRECTIONAL LAYOUT MCCLELLAN PC G04-18D

SECTION 4, TOWNSHIP 4 NORTH, RANGE 65 WEST OF THE 6TH PRINCIPAL MERIDIAN



- LEGEND**
- ◆ FOUND MONUMENT AS DESCRIBED
  - ★ PROPOSED WELL
  - EXISTING WELL
  - BOTTOM HOLE
  - ⊗ ABANDONED WELL

**NAD 83 LATITUDE AND LONGITUDE**

**MCCLELLAN PC G04-18D**  
**SURFACE HOLE:**  
 LATITUDE: N40.34687°  
 LONGITUDE: W104.66588°  
 ELEVATION: 4669'  
 FOOTAGE: 589' FNL, 2004' FEL  
 PDOP: 2.2  
 QTR/QTR: NW4/NE4  
 PROP LINE: 500'± NORTHWEST

**BOTTOM HOLE:**  
 LATITUDE: N40.34498°  
 LONGITUDE: W104.66791°  
 FOOTAGE: 1275' FNL, 2565' FEL

**NEAREST EXISTING WELL:**  
 MCCLELLAN 4-12 SURFACE HOLE  
 LATITUDE: N40.34674°  
 LONGITUDE: W104.66588°  
 ELEVATION: 4669'  
 47' SOUTH

# MULTI-WELL PAD LOCATION DRAWING MCCLELLAN PC G04-18D

SECTION 4, TOWNSHIP 4 NORTH, RANGE 65 WEST OF THE 6TH PRINCIPAL MERIDIAN

