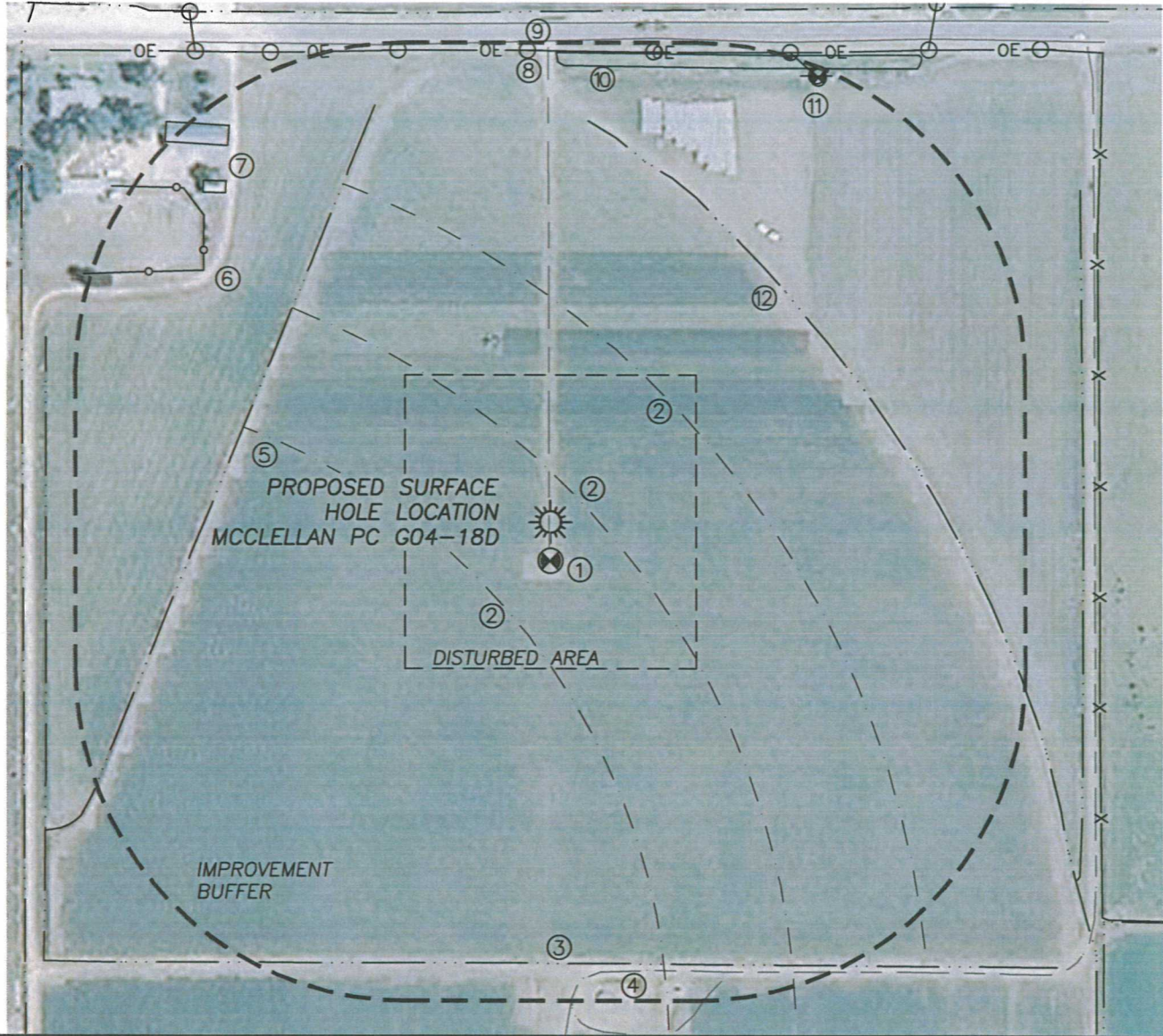


**LOCATION DRAWING
MCCLELLAN PC G04-18D**

SECTION 4, TOWNSHIP 4 NORTH, RANGE 65 WEST OF THE 6TH PRINCIPAL MERIDIAN



IMPROVEMENTS

- | | |
|-------------------------|----------------------------|
| 1. GAS WELL & ACC. RD.: | 47'± S |
| 2. PIVOT TRACK: | 111'± SW,
44', 206'± NE |
| 3. IRRIG. DITCH: | 532'± S |
| 4. PROD. FACILITY-ROAD: | 542'± S |
| 5. IRRIG. DITCH: | 389'± NW |
| 6. WIRE FENCE: | 520'± NW |
| 7. BUILDING: | 562', 598'± NW |
| 8. O.H. UTILITY: | 568'± N |
| 9. S EDGE WCR 50: | 579'± N |
| 10. IRRIG. POND: | 550'± NE |
| 11. IRRIG. PUMP: | 627'± NE |
| 12. IRRIG. DITCH: | 397'± NE |

DISTANCE TO NEAREST:

- | | |
|---------------------|-----------|
| BUILDING: | 562'± NW |
| PUBLIC ROAD: | 579'± N |
| ABOVE GRND UTILITY: | 568'± N |
| RAILROAD: | 4330'± NW |
| PROP. LINE: | 500'± NW |

