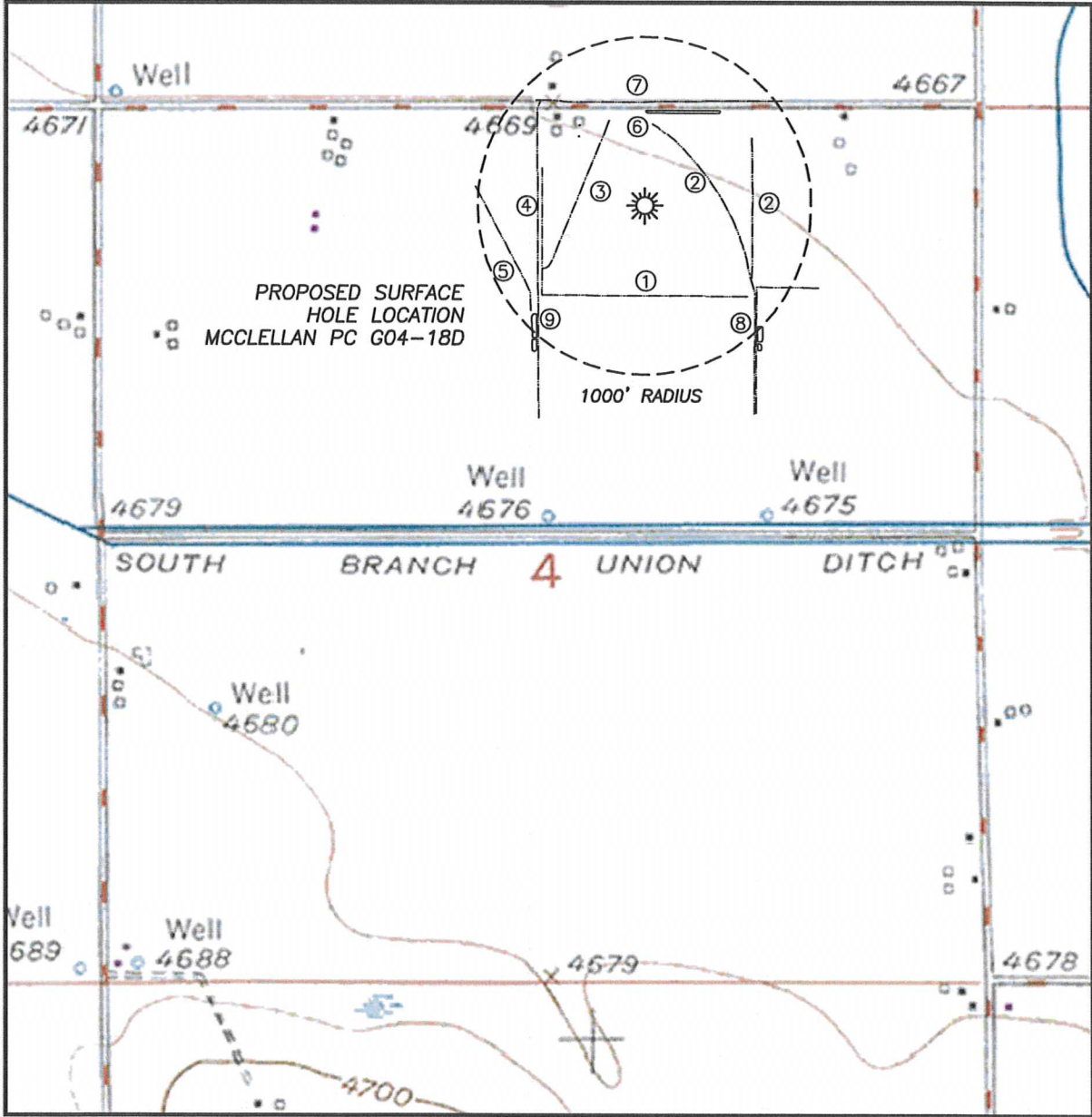


## HYDROLOGY MAP MCCLELLAN PC G04-18D

SECTION 4, TOWNSHIP 4 NORTH, RANGE 65 WEST OF THE 6TH PRINCIPAL MERIDIAN



SURFACE WATER

- |                  |               |                  |          |
|------------------|---------------|------------------|----------|
| 1. IRRIG. DITCH: | 532'± S       | 5. IRRIG. DITCH: | 842'± SW |
| 2. IRRIG. DITCH: | 397'± NE      | 6. IRRIG. POND:  | 550'± NE |
|                  | 648'± E       | 7. IRRIG. DITCH: | 614'± N  |
| 3. IRRIG. DITCH: | 389'± NW      | 8. IRRIG. POND:  | 985'± SE |
| 4. IRRIG. DITCH: | 613', 640'± W | 9. IRRIG. POND:  | 914'± SW |

