

EnCana Corporation

Planning Report - Geographic

Database:	EDM	Local Co-ordinate Reference:	Well Melbon Ranch 33-17
Company:	DJ/Paradox/WTX	TVD Reference:	WELL @ 4914.0ft (Original Well Elev)
Project:	Wattenberg	MD Reference:	WELL @ 4914.0ft (Original Well Elev)
Site:	New Drills	North Reference:	True
Well:	Melbon Ranch 33-17	Survey Calculation Method:	Minimum Curvature
Wellbore:	Wellbore #1		
Design:	Melbon Ranch 33-17		

Project	Wattenberg,		
Map System:	US State Plane 1983	System Datum:	Mean Sea Level
Geo Datum:	North American Datum 1983		
Map Zone:	Colorado Northern Zone		

Site	New Drills					
Site Position:		Northing:	1,278,589.08 ft	Latitude:	40° 5' 49.848 N	
From:	Lat/Long	Easting:	3,130,247.44 ft	Longitude:	105° 2' 3.912 W	
Position Uncertainty:		ft	Slot Radius:	in	Grid Convergence:	0.30 °

Well	Melbon Ranch 33-17					
Well Position	+N-S	14,230.8 ft	Northing:	1,293,736.64 ft	Latitude:	40° 8' 12.444 N
	+E-W	99,192.4 ft	Easting:	3,229,303.83 ft	Longitude:	104° 40' 47.460 W
Position Uncertainty		ft	Wellhead Elevation:	ft	Ground Level:	4,901.0 ft

Wellbore	Wellbore #1				
Magnetics	Model Name	Sample Date	Declination (°)	Dip Angle (°)	Field Strength (nT)
	IGRF200510	12/31/2009	8.95	66.91	53,174

Design	Melbon Ranch 33-17				
Audit Notes:					
Version:	Phase:	PROTOTYPE	Tie On Depth:	0.0	
Vertical Section:	Depth From (TVD) (ft)	+N/-S (ft)	+E/-W (ft)	Direction (°)	
	0.0	0.0	0.0	275.97	

Plan Sections										
Measured Depth (ft)	Inclination (°)	Azimuth (°)	Vertical Depth (ft)	+N/-S (ft)	+E/-W (ft)	Dogleg Rate (°/100ft)	Build Rate (°/100ft)	Turn Rate (°/100ft)	TFO (°)	Target
0.0	0.00	0.00	0.0	0.0	0.0	0.00	0.00	0.00	0.00	
900.0	0.00	0.00	900.0	0.0	0.0	0.00	0.00	0.00	0.00	
1,891.5	19.83	275.97	1,871.8	17.7	-169.0	2.00	2.00	0.00	275.97	
6,052.6	19.83	275.97	5,786.2	164.5	-1,572.9	0.00	0.00	0.00	0.00	
7,044.1	0.00	0.00	6,758.0	182.2	-1,741.8	2.00	-2.00	0.00	180.00	
8,144.1	0.00	0.00	7,858.0	182.2	-1,741.8	0.00	0.00	0.00	0.00	Melbon Ranch 33-1

EnCana Corporation

Planning Report - Geographic

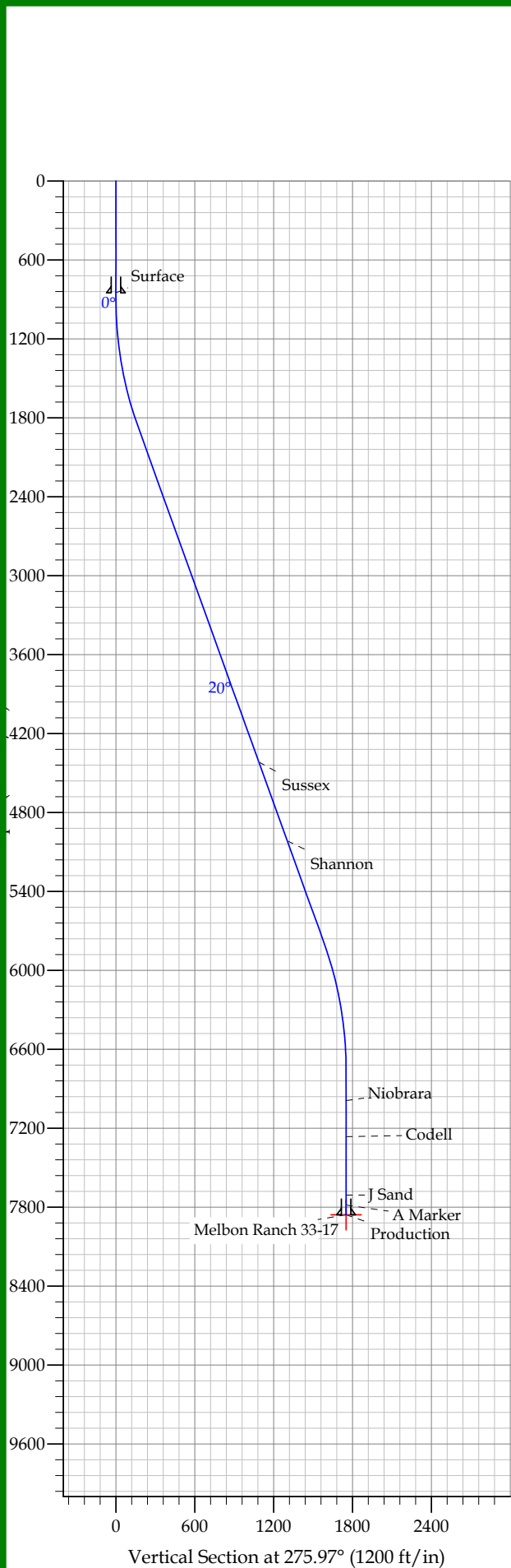
Database:	EDM	Local Co-ordinate Reference:	Well Melbon Ranch 33-17
Company:	DJ/Paradox/WTX	TVD Reference:	WELL @ 4914.0ft (Original Well Elev)
Project:	Wattenberg	MD Reference:	WELL @ 4914.0ft (Original Well Elev)
Site:	New Drills	North Reference:	True
Well:	Melbon Ranch 33-17	Survey Calculation Method:	Minimum Curvature
Wellbore:	Wellbore #1		
Design:	Melbon Ranch 33-17		

Planned Survey									
Measured Depth (ft)	Inclination (°)	Azimuth (°)	Vertical Depth (ft)	+N/-S (ft)	+E/-W (ft)	Map Northing (ft)	Map Easting (ft)	Latitude	Longitude
0.0	0.00	0.00	0.0	0.0	0.0	1,293,736.64	3,229,303.83	40° 8' 12.444 N	104° 40' 47.460 W
850.0	0.00	0.00	850.0	0.0	0.0	1,293,736.64	3,229,303.83	40° 8' 12.444 N	104° 40' 47.460 W
Surface									
900.0	0.00	0.00	900.0	0.0	0.0	1,293,736.64	3,229,303.83	40° 8' 12.444 N	104° 40' 47.460 W
1,891.5	19.83	275.97	1,871.8	17.7	-169.0	1,293,752.75	3,229,134.71	40° 8' 12.619 N	104° 40' 49.636 W
4,596.1	19.83	275.97	4,416.0	113.1	-1,081.5	1,293,839.76	3,228,221.37	40° 8' 13.562 N	104° 41' 1.385 W
Sussex									
5,232.8	19.83	275.97	5,015.0	135.6	-1,296.3	1,293,860.25	3,228,006.33	40° 8' 13.784 N	104° 41' 4.151 W
Shannon									
6,052.6	19.83	275.97	5,786.2	164.5	-1,572.9	1,293,886.62	3,227,729.49	40° 8' 14.069 N	104° 41' 7.712 W
7,044.1	0.00	0.00	6,758.0	182.2	-1,741.8	1,293,902.73	3,227,560.37	40° 8' 14.244 N	104° 41' 9.888 W
7,277.1	0.00	0.00	6,991.0	182.2	-1,741.8	1,293,902.73	3,227,560.37	40° 8' 14.244 N	104° 41' 9.888 W
Niobrara									
7,550.1	0.00	0.00	7,264.0	182.2	-1,741.8	1,293,902.73	3,227,560.37	40° 8' 14.244 N	104° 41' 9.888 W
Codell									
7,994.1	0.00	0.00	7,708.0	182.2	-1,741.8	1,293,902.73	3,227,560.37	40° 8' 14.244 N	104° 41' 9.888 W
J Sand									
8,070.1	0.00	0.00	7,784.0	182.2	-1,741.8	1,293,902.73	3,227,560.37	40° 8' 14.244 N	104° 41' 9.888 W
A Marker									
8,144.1	0.00	0.00	7,858.0	182.2	-1,741.8	1,293,902.73	3,227,560.37	40° 8' 14.244 N	104° 41' 9.888 W
Production - Melbon Ranch 33-17									

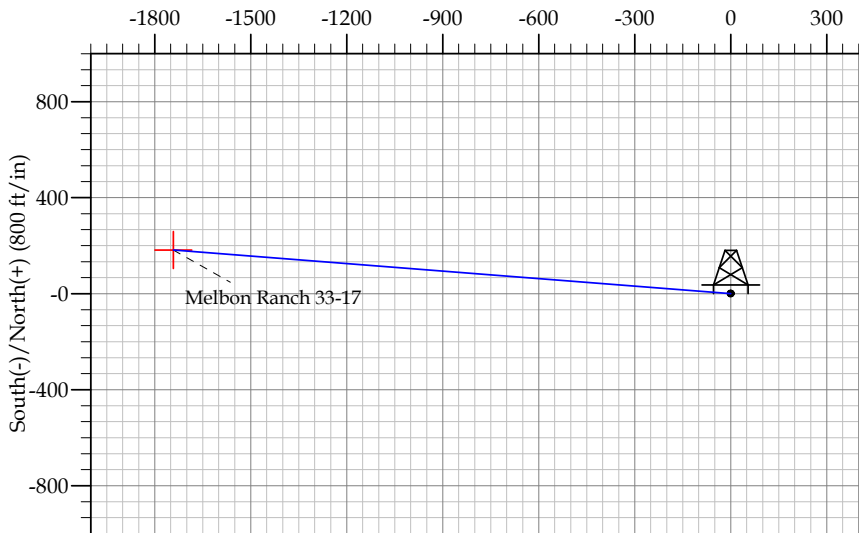
Design Targets									
Target Name	Dip Angle (°)	Dip Dir. (°)	TVD (ft)	+N/-S (ft)	+E/-W (ft)	Northing (ft)	Easting (ft)	Latitude	Longitude
- hit/miss target									
- Shape									
Melbon Ranch 33-17	0.00	0.00	7,858.0	182.2	-1,741.8	1,293,902.73	3,227,560.37	40° 8' 14.244 N	104° 41' 9.888 W
- plan hits target									
- Point									

Casing Points					
Measured Depth (ft)	Vertical Depth (ft)	Name	Casing Diameter (in)	Hole Diameter (in)	
850.0	850.0	Surface	8.625	12.250	
8,144.1	7,858.0	Production	4.500	7.785	

Formations						
Measured Depth (ft)	Vertical Depth (ft)	Name	Lithology	Dip (°)	Dip Direction (°)	
4,596.1	4,416.0	Sussex		0.00		
5,232.8	5,015.0	Shannon		0.00		
7,277.1	6,991.0	Niobrara		0.00		
7,550.1	7,264.0	Codell		0.00		
7,994.1	7,708.0	J Sand		0.00		
8,070.1	7,784.0	A Marker		0.00		



REFERENCE INFORMATION										
Co-ordinate (N/E) Reference: Well Melbon Ranch 33-17, True North										
Vertical (TVD) Reference: WELL @ 4914.0ft (Original Well Elev)										
Section (VS) Reference: Slot - (0.0N, 0.0E)										
Measured Depth Reference: WELL @ 4914.0ft (Original Well Elev)										
Calculation Method:										
WELL DETAILS: Melbon Ranch 33-17										
SECTION DETAILS										
Sec	MD	Inc	Azi	TVD	+N/-S	+E/-W	DLeg	TFace	VSec	Target
1	0.0	0.00	0.00	0.0	0.0	0.0	0.00	0.00	0.0	
2	900.0	0.00	0.00	900.0	0.0	0.0	0.00	0.00	0.0	
3	1891.5	19.83	275.97	1871.8	17.7	-169.0	2.00	275.97	169.9	
4	6052.6	19.83	275.97	5786.2	164.5	-1572.9	0.00	0.00	1581.5	
5	7044.1	0.00	0.00	6758.0	182.2	-1741.8	2.00	180.00	1751.4	
6	8144.1	0.00	0.00	7858.0	182.2	-1741.8	0.00	0.00	1751.4	Melbon Ranch 33-17



FORMATION TOP DETAILS				
	TVDPath	MDPath	Formation	
	4416.0	4596.1	Sussex	
	5015.0	5232.8	Shannon	
	6991.0	7277.1	Niobrara	
	7264.0	7550.1	Codell	
	7708.0	7994.1	J Sand	
	7784.0	8070.1	A Marker	