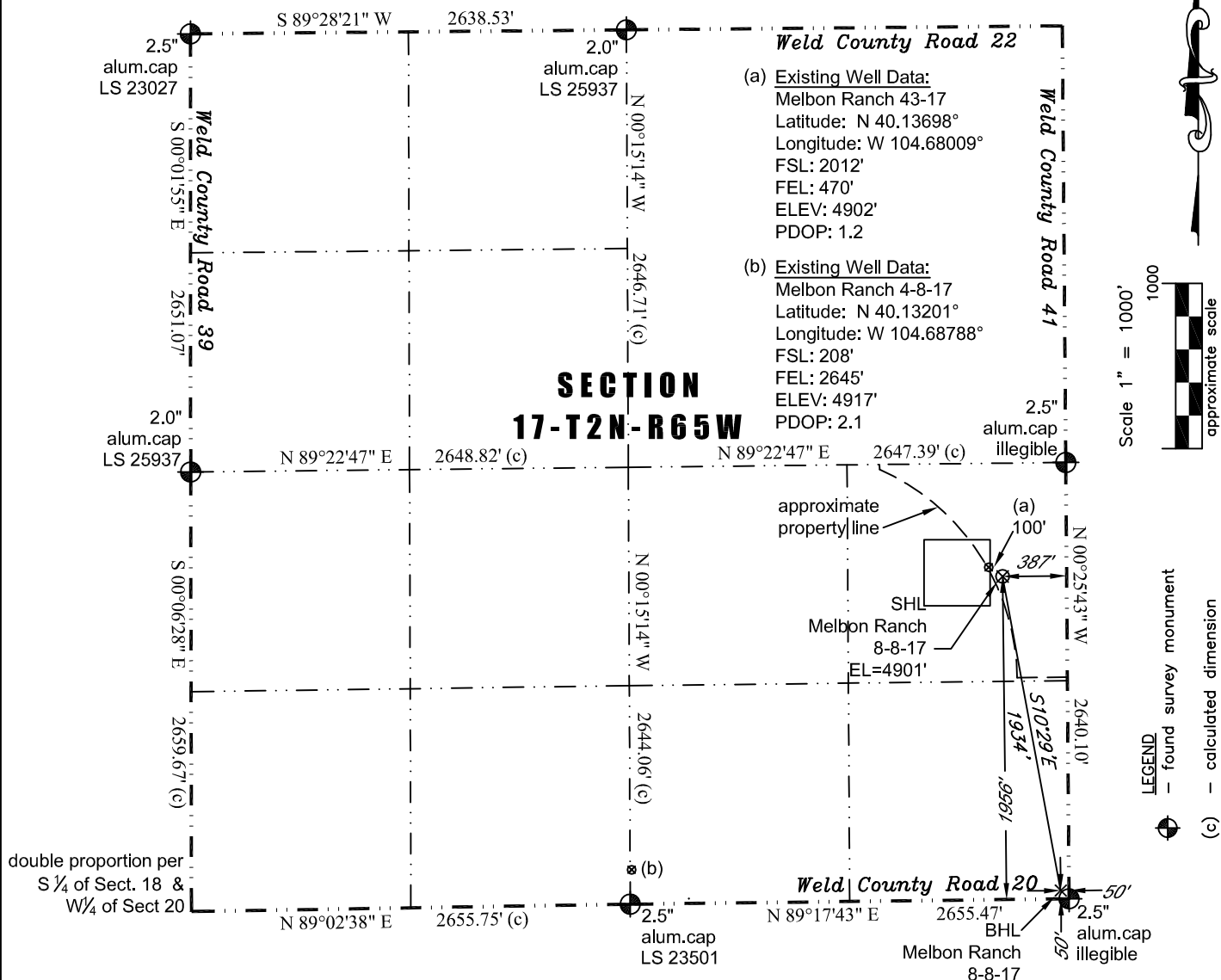


PLS Group, LLC
109 Coronado Ct. - Bldg. 7
Fort Collins, Colorado 80525
P. 970-282-3446 Fx. 970-377-6767

WELL LOCATION CERTIFICATE

THIS MAP DOES NOT REPRESENT A BOUNDARY SURVEY



In accordance with a request from Jay Knutson of EnCana Oil & Gas (USA) Inc., PLS Group, LLC has determined the location of the **Melbon Ranch 8-8-17** well site to be SHL: 1956' FSL and 387' FEL, (BHL 50' FSL and 50' FEL), as measured at ninety (90) degrees from the section lines of Section 17, Township 2 North, Range 65 West of the 6th Principal Meridian, Weld County Colorado.

Proposed Surface Hole Data:

Latitude: N 40.13682° (BHL: 40.13160°)
Longitude: W 104.67980° (BHL: 104.67860°)
PDOP: 1.1

Nearest:

Building 713' southeast
Public Road 376' east
Property Line 56' southwest
Existing Well: Melbon Ranch 43-17 100' northwest

Above Ground Utility 365' east
Railroad 24,177' southeast
Well Window: SHL is 75' outside

Notes:

- 1) Bearings and distances based on NAD 83 Colorado North State Plane Coordinates using RTK GPS observations taken 8/20/11 by operator Craig Burke.
- 2) Conversion factor to ground (1.000273817).
- 3) Elevations based on NAVD 88 GPS heights and Geoid 2003 corrections.
- 4) See Location Drawing for visible improvements within 400 feet of Pad Site.
- 5) The surface use is irrigated corn field.

NOTICE: According to Colorado law you must commence any legal action based upon any defect in this W.L.C. within three years after you first discover such defect. In no event may any action based upon any defect in this W.L.C. be commenced more than ten years from this said date of the certification shown hereon.

I hereby certify that this Well Location Certificate was prepared by me or under my direct supervision on 9/5/2011 for and on behalf of EnCana Oil & Gas (USA) Inc. That it is not a Land Survey Plat or an Improvement Survey Plat and that it is not to be relied upon for establishment of fences, buildings, or other future improvement lines.

John Robert McGehee LS#38219
Well: Melbon Ranch 8-8-17 WLC