

# EnCana Corporation

## Planning Report - Geographic

<b>Database:</b>	EDM	<b>Local Co-ordinate Reference:</b>	Well Melbon Ranch 34-17
<b>Company:</b>	DJ/Paradox/WTX	<b>TVD Reference:</b>	WELL @ 4931.0ft (Original Well Elev)
<b>Project:</b>	Wattenberg	<b>MD Reference:</b>	WELL @ 4931.0ft (Original Well Elev)
<b>Site:</b>	New Drills	<b>North Reference:</b>	True
<b>Well:</b>	Melbon Ranch 34-17	<b>Survey Calculation Method:</b>	Minimum Curvature
<b>Wellbore:</b>	Wellbore #1		
<b>Design:</b>	Melbon Ranch 34-17		

<b>Project</b>	Wattenberg,		
<b>Map System:</b>	US State Plane 1983	<b>System Datum:</b>	Mean Sea Level
<b>Geo Datum:</b>	North American Datum 1983		
<b>Map Zone:</b>	Colorado Northern Zone		

Site		New Drills				
Site Position:		Northing:	1,278,589.08ft	Latitude:	40° 5' 49.848 N	
From:	Lat/Long	Easting:	3,130,247.44ft	Longitude:	105° 2' 3.912 W	
Position Uncertainty:		ft	Slot Radius:	in	Grid Convergence:	0.30 °

Well	Melbon Ranch 34-17					
Well Position	+N-S	12,498.6 ft	Northing:	1,291,974.26 ft	Latitude:	40° 7' 55.236 N
	+E-W	96,887.3 ft	Easting:	3,227,016.03 ft	Longitude:	104° 41' 17.124 W
Position Uncertainty		ft	Wellhead Elevation:	ft	Ground Level:	4,918.0ft

<b>Wellbore</b>	Wellbore #1				
<b>Magnetics</b>	<b>Model Name</b>	<b>Sample Date</b>	<b>Declination (°)</b>	<b>Dip Angle (°)</b>	<b>Field Strength (nT)</b>
	IGRF200510	12/31/2009	8.96	66.90	53,171

<b>Design</b>	Melbon Ranch 34-17				
<b>Audit Notes:</b>					
<b>Version:</b>	<b>Phase:</b>	PROTOTYPE		<b>Tie On Depth:</b>	0.0
<b>Vertical Section:</b>	<b>Depth From (TVD) (ft)</b>	<b>+N/-S (ft)</b>	<b>+E/-W (ft)</b>	<b>Direction (°)</b>	
	0.0	0.0	0.0	57.64	

<b>Plan Sections</b>										
Measured Depth (ft)	Inclination (°)	Azimuth (°)	Vertical Depth (ft)	+N/-S (ft)	+E/-W (ft)	Dogleg Rate (°/100ft)	Build Rate (°/100ft)	Turn Rate (°/100ft)	TFO (°)	Target
0.0	0.00	0.00	0.0	0.0	0.0	0.00	0.00	0.00	0.00	
910.0	0.00	0.00	910.0	0.0	0.0	0.00	0.00	0.00	0.00	
1,352.4	8.85	57.64	1,350.7	18.2	28.8	2.00	2.00	0.00	57.64	
6,396.1	8.85	57.64	6,334.3	433.5	684.2	0.00	0.00	0.00	0.00	
6,838.5	0.00	0.00	6,775.0	451.7	713.0	2.00	-2.00	0.00	180.00	
7,938.5	0.00	0.00	7,875.0	451.7	713.0	0.00	0.00	0.00	0.00	Melbon Ranch 34-1

# EnCana Corporation

## Planning Report - Geographic

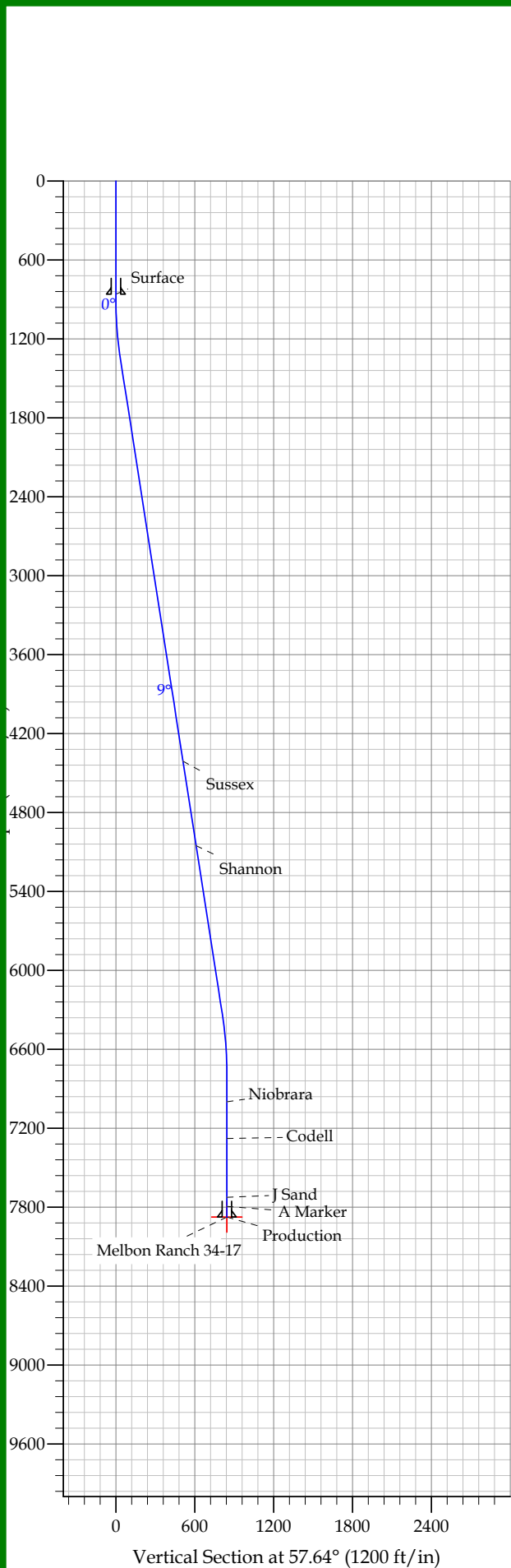
<b>Database:</b>	EDM	<b>Local Co-ordinate Reference:</b>	Well Melbon Ranch 34-17
<b>Company:</b>	DJ/Paradox/WTX	<b>TVD Reference:</b>	WELL @ 4931.0ft (Original Well Elev)
<b>Project:</b>	Wattenberg	<b>MD Reference:</b>	WELL @ 4931.0ft (Original Well Elev)
<b>Site:</b>	New Drills	<b>North Reference:</b>	True
<b>Well:</b>	Melbon Ranch 34-17	<b>Survey Calculation Method:</b>	Minimum Curvature
<b>Wellbore:</b>	Wellbore #1		
<b>Design:</b>	Melbon Ranch 34-17		

Planned Survey										
Measured Depth (ft)	Inclination (°)	Azimuth (°)	Vertical Depth (ft)	+N/-S (ft)	+E/-W (ft)	Map Northing (ft)	Map Easting (ft)	Latitude	Longitude	
0.0	0.00	0.00	0.0	0.0	0.0	1,291,974.26	3,227,016.03	40° 7' 55.236 N	104° 41' 17.124 W	
860.0	0.00	0.00	860.0	0.0	0.0	1,291,974.26	3,227,016.03	40° 7' 55.236 N	104° 41' 17.124 W	
Surface										
910.0	0.00	0.00	910.0	0.0	0.0	1,291,974.26	3,227,016.03	40° 7' 55.236 N	104° 41' 17.124 W	
1,352.4	8.85	57.64	1,350.7	18.2	28.8	1,291,992.77	3,227,044.67	40° 7' 55.416 N	104° 41' 16.753 W	
4,449.6	8.85	57.64	4,411.0	273.2	431.3	1,292,251.42	3,227,444.77	40° 7' 57.936 N	104° 41' 11.571 W	
Sussex										
5,098.3	8.85	57.64	5,052.0	326.6	515.6	1,292,305.60	3,227,528.58	40° 7' 58.464 N	104° 41' 10.486 W	
Shannon										
6,396.1	8.85	57.64	6,334.3	433.5	684.2	1,292,413.98	3,227,696.23	40° 7' 59.520 N	104° 41' 8.315 W	
6,838.5	0.00	0.00	6,775.0	451.7	713.0	1,292,432.49	3,227,724.86	40° 7' 59.700 N	104° 41' 7.944 W	
7,062.5	0.00	0.00	6,999.0	451.7	713.0	1,292,432.49	3,227,724.86	40° 7' 59.700 N	104° 41' 7.944 W	
Niobrara										
7,342.5	0.00	0.00	7,279.0	451.7	713.0	1,292,432.49	3,227,724.86	40° 7' 59.700 N	104° 41' 7.944 W	
Codell										
7,788.5	0.00	0.00	7,725.0	451.7	713.0	1,292,432.49	3,227,724.86	40° 7' 59.700 N	104° 41' 7.944 W	
J Sand										
7,858.5	0.00	0.00	7,795.0	451.7	713.0	1,292,432.49	3,227,724.86	40° 7' 59.700 N	104° 41' 7.944 W	
A Marker										
7,938.5	0.00	0.00	7,875.0	451.7	713.0	1,292,432.49	3,227,724.86	40° 7' 59.700 N	104° 41' 7.944 W	
Production - Melbon Ranch 34-17										

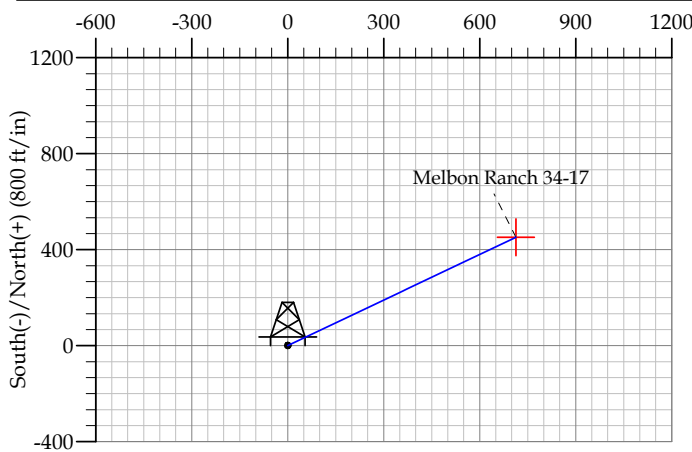
Design Targets										
Target Name	Dip Angle (°)	Dip Dir. (°)	TVD (ft)	+N/-S (ft)	+E/-W (ft)	Northing (ft)	Easting (ft)	Latitude	Longitude	
- hit/miss target										
- Shape										
Melbon Ranch 34-17	0.00	0.00	7,875.0	451.7	713.0	1,292,432.49	3,227,724.86	40° 7' 59.700 N	104° 41' 7.944 W	
- plan hits target										
- Point										

Casing Points					
Measured Depth (ft)	Vertical Depth (ft)	Name	Casing Diameter (in)	Hole Diameter (in)	
860.0	860.0	Surface	8.625	12.250	
7,938.5	7,875.0	Production	4.500	7.785	

Formations						
Measured Depth (ft)	Vertical Depth (ft)	Name	Lithology	Dip (°)	Dip Direction (°)	
4,449.6	4,411.0	Sussex		0.00		
5,098.3	5,052.0	Shannon		0.00		
7,062.5	6,999.0	Niobrara		0.00		
7,342.5	7,279.0	Codell		0.00		
7,788.5	7,725.0	J Sand		0.00		
7,858.5	7,795.0	A Marker		0.00		



REFERENCE INFORMATION															
Co-ordinate (N/E) Reference: Well Melbon Ranch 34-17, True North															
Vertical (TVD) Reference: WELL @ 4931.0ft (Original Well Elev)															
Section (VS) Reference: Slot - (0.0N, 0.0E)															
Measured Depth Reference: WELL @ 4931.0ft (Original Well Elev)															
Calculation Method:															
WELL DETAILS: Melbon Ranch 34-17															
+N/-S		+E/-W		Northing		Ground Level: 4918.0		Easting		Latitude		Longitude		Slot	
SECTION DETAILS															
Sec	MD	Inc	Azi	TVD	+N/-S	+E/-W	DLeg	TFace	VSec	Target					
1	0.0	0.00	0.00	0.0	0.0	0.0	0.00	0.00	0.0						
2	910.0	0.00	0.00	910.0	0.0	0.0	0.00	0.00	0.0						
3	1352.4	8.85	57.64	1350.7	18.2	28.8	2.00	57.64	34.1						
4	6396.1	8.85	57.64	6334.3	433.5	684.2	0.00	0.00	810.0						
5	6838.5	0.00	0.00	6775.0	451.7	713.0	2.00	180.00	844.1						
6	7938.5	0.00	0.00	7875.0	451.7	713.0	0.00	0.00	844.1	Melbon Ranch 34-17					



FORMATION TOP DETAILS		
TVDPath	MDPath	Formation
4411.0	4449.6	Sussex
5052.0	5098.3	Shannon
6999.0	7062.5	Niobrara
7279.0	7342.5	Codell
7725.0	7788.5	J Sand
7795.0	7858.5	A Marker
CASING DETAILS		
TVD	MD	Name Size
860.0	860.0	Surface 8.625
7875.0	7938.5	Production 4.500