

EnCana Corporation

Planning Report - Geographic

Database:	EDM	Local Co-ordinate Reference:	Well Melbon Ranch 6-8-17
Company:	DJ/Paradox/WTX	TVD Reference:	WELL @ 4931.0ft (Original Well Elev)
Project:	Wattenberg	MD Reference:	WELL @ 4931.0ft (Original Well Elev)
Site:	New Drills	North Reference:	True
Well:	Melbon Ranch 6-8-17	Survey Calculation Method:	Minimum Curvature
Wellbore:	Wellbore #1		
Design:	Melbon Ranch 6-8-17		

Project	Wattenberg,		
Map System:	US State Plane 1983	System Datum:	Mean Sea Level
Geo Datum:	North American Datum 1983		
Map Zone:	Colorado Northern Zone		

Site	New Drills				
Site Position:		Northing:	1,278,589.08ft	Latitude:	40° 5' 49.848 N
From:	Lat/Long	Easting:	3,130,247.44ft	Longitude:	105° 2' 3.912 W
Position Uncertainty:	ft	Slot Radius:	in	Grid Convergence:	0.30 °

Well	Melbon Ranch 6-8-17					
Well Position	+N-S	12,498.6 ft	Northing:	1,291,974.33 ft	Latitude:	40° 7' 55.236 N
	+E-W	96,895.7 ft	Easting:	3,227,024.42 ft	Longitude:	104° 41' 17.016 W
Position Uncertainty		ft	Wellhead Elevation:	ft	Ground Level:	4,918.0 ft

Wellbore	Wellbore #1				
Magnetics	Model Name	Sample Date	Declination (°)	Dip Angle (°)	Field Strength (nT)
	IGRF200510	12/31/2009	8.96	66.90	53,171

Design	Melbon Ranch 6-8-17				
Audit Notes:					
Version:	Phase:	PROTOTYPE	Tie On Depth:	0.0	
Vertical Section:	Depth From (TVD) (ft)	+N/-S (ft)	+E/-W (ft)	Direction (°)	
	0.0	0.0	0.0	96.64	

Plan Sections										
Measured Depth (ft)	Inclination (°)	Azimuth (°)	Vertical Depth (ft)	+N/-S (ft)	+E/-W (ft)	Dogleg Rate (°/100ft)	Build Rate (°/100ft)	Turn Rate (°/100ft)	TFO (°)	Target
0.0	0.00	0.00	0.0	0.0	0.0	0.00	0.00	0.00	0.00	
910.0	0.00	0.00	910.0	0.0	0.0	0.00	0.00	0.00	0.00	
1,651.0	14.82	96.64	1,642.7	-11.0	94.6	2.00	2.00	0.00	96.64	
6,199.8	14.82	96.64	6,040.3	-145.6	1,250.3	0.00	0.00	0.00	0.00	
6,940.8	0.00	0.00	6,773.0	-156.6	1,344.9	2.00	-2.00	0.00	180.00	
8,040.8	0.00	0.00	7,873.0	-156.6	1,344.9	0.00	0.00	0.00	0.00	Melbon Ranch 6-8-

EnCana Corporation

Planning Report - Geographic

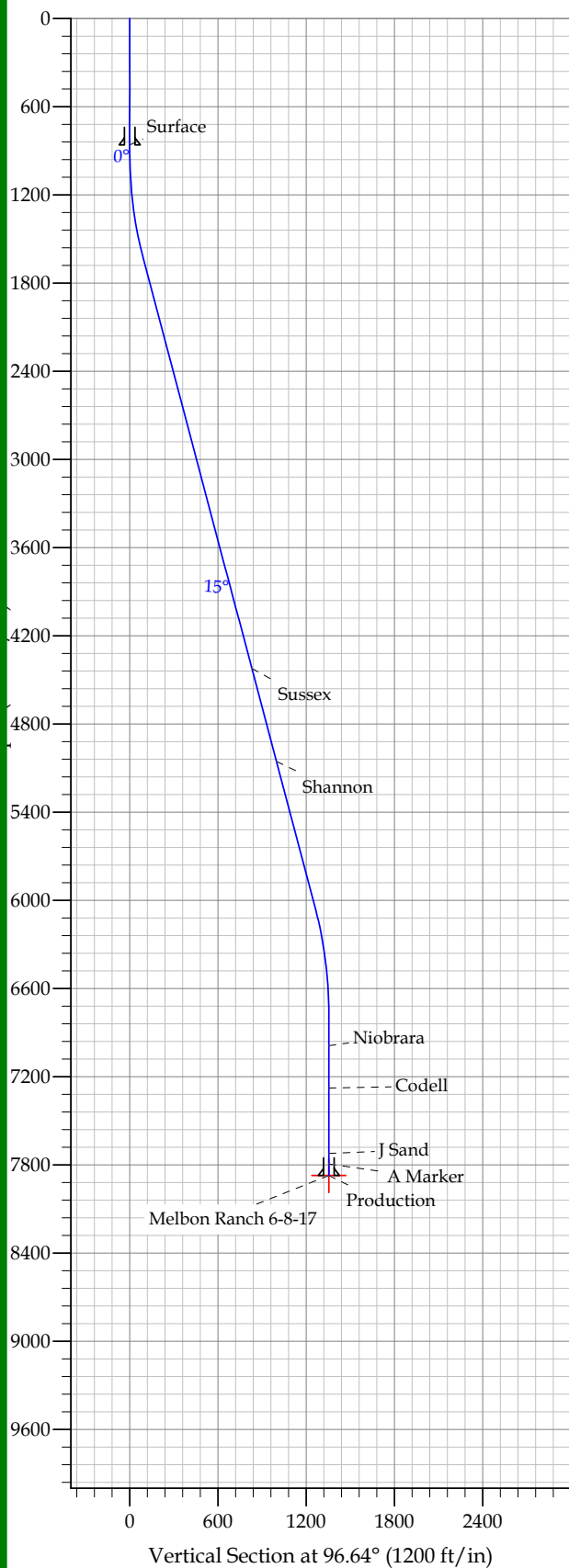
Database:	EDM	Local Co-ordinate Reference:	Well Melbon Ranch 6-8-17
Company:	DJ/Paradox/WTX	TVD Reference:	WELL @ 4931.0ft (Original Well Elev)
Project:	Wattenberg	MD Reference:	WELL @ 4931.0ft (Original Well Elev)
Site:	New Drills	North Reference:	True
Well:	Melbon Ranch 6-8-17	Survey Calculation Method:	Minimum Curvature
Wellbore:	Wellbore #1		
Design:	Melbon Ranch 6-8-17		

Planned Survey										
Measured Depth (ft)	Inclination (°)	Azimuth (°)	Vertical Depth (ft)	+N/-S (ft)	+E/-W (ft)	Map Northing (ft)	Map Easting (ft)	Latitude	Longitude	
0.0	0.00	0.00	0.0	0.0	0.0	1,291,974.33	3,227,024.42	40° 7' 55.236 N	104° 41' 17.016 W	
860.0	0.00	0.00	860.0	0.0	0.0	1,291,974.33	3,227,024.42	40° 7' 55.236 N	104° 41' 17.016 W	
Surface										
910.0	0.00	0.00	910.0	0.0	0.0	1,291,974.33	3,227,024.42	40° 7' 55.236 N	104° 41' 17.016 W	
1,651.0	14.82	96.64	1,642.7	-11.0	94.6	1,291,964.18	3,227,119.17	40° 7' 55.127 N	104° 41' 15.797 W	
4,526.9	14.82	96.64	4,423.0	-96.1	825.3	1,291,885.81	3,227,850.55	40° 7' 54.286 N	104° 41' 6.391 W	
Sussex										
5,180.6	14.82	96.64	5,055.0	-115.4	991.4	1,291,867.99	3,228,016.80	40° 7' 54.095 N	104° 41' 4.252 W	
Shannon										
6,199.8	14.82	96.64	6,040.3	-145.6	1,250.3	1,291,840.21	3,228,275.99	40° 7' 53.797 N	104° 41' 0.919 W	
6,940.8	0.00	0.00	6,773.0	-156.6	1,344.9	1,291,830.06	3,228,370.74	40° 7' 53.688 N	104° 40' 59.700 W	
7,156.8	0.00	0.00	6,989.0	-156.6	1,344.9	1,291,830.06	3,228,370.74	40° 7' 53.688 N	104° 40' 59.700 W	
Niobrara										
7,444.8	0.00	0.00	7,277.0	-156.6	1,344.9	1,291,830.06	3,228,370.74	40° 7' 53.688 N	104° 40' 59.700 W	
Codell										
7,890.8	0.00	0.00	7,723.0	-156.6	1,344.9	1,291,830.06	3,228,370.74	40° 7' 53.688 N	104° 40' 59.700 W	
J Sand										
7,961.8	0.00	0.00	7,794.0	-156.6	1,344.9	1,291,830.06	3,228,370.74	40° 7' 53.688 N	104° 40' 59.700 W	
A Marker										
8,040.8	0.00	0.00	7,873.0	-156.6	1,344.9	1,291,830.06	3,228,370.74	40° 7' 53.688 N	104° 40' 59.700 W	
Production - Melbon Ranch 6-8-17										

Design Targets										
Target Name	Dip Angle (°)	Dip Dir. (°)	TVD (ft)	+N/-S (ft)	+E/-W (ft)	Northing (ft)	Easting (ft)	Latitude	Longitude	
- hit/miss target										
- Shape										
Melbon Ranch 6-8-17	0.00	0.00	7,873.0	-156.6	1,344.9	1,291,830.06	3,228,370.74	40° 7' 53.688 N	104° 40' 59.700 W	
- plan hits target										
- Point										

Casing Points					
Measured Depth (ft)	Vertical Depth (ft)	Name	Casing Diameter (in)	Hole Diameter (in)	
860.0	860.0	Surface	8.625	12.250	
8,040.8	7,873.0	Production	4.500	7.785	

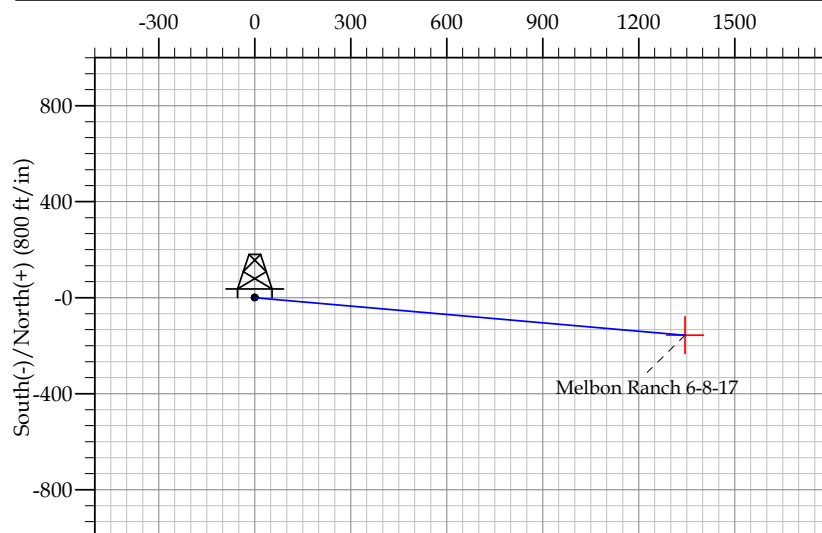
Formations						
Measured Depth (ft)	Vertical Depth (ft)	Name	Lithology	Dip (°)	Dip Direction (°)	
4,526.9	4,423.0	Sussex		0.00		
5,180.6	5,055.0	Shannon		0.00		
7,156.8	6,989.0	Niobrara		0.00		
7,444.8	7,277.0	Codell		0.00		
7,890.8	7,723.0	J Sand		0.00		
7,961.8	7,794.0	A Marker		0.00		



REFERENCE INFORMATION	
Co-ordinate (N/E) Reference:	Well Melbon Ranch 6-8-17, True North
Vertical (TVD) Reference:	WELL @ 4931.0ft (Original Well Elev)
Section (VS) Reference:	Slot - (0.0N, 0.0E)
Measured Depth Reference:	WELL @ 4931.0ft (Original Well Elev)
Calculation Method:	

WELL DETAILS: Melbon Ranch 6-8-17

						Ground Level: 4918.0					
+N/-S		+E/-W		Northing		Easting		Latitude		Longitude	
SECTION DETAILS											
Sec	MD	Inc	Azi	TVD	+N/-S	+E/-W	DLeg	TFace	VSec	Target	
1	0.0	0.00	0.00	0.0	0.0	0.0	0.00	0.00	0.0		
2	910.0	0.00	0.00	910.0	0.0	0.0	0.00	0.00	0.0		
3	1651.0	14.82	96.64	1642.7	-11.0	94.6	2.00	96.64	95.3		
4	6199.8	14.82	96.64	6040.3	-145.6	1250.3	0.00	0.00	1258.7		
5	6940.8	0.00	0.00	6773.0	-156.6	1344.9	2.00	180.00	1354.0		
6	8040.8	0.00	0.00	7873.0	-156.6	1344.9	0.00	0.00	1354.0	Melbon Ranch 6-8-17	



FORMATION TOP DETAILS

TVDPath	MDPath	Formation
4423.0	4526.9	Sussex
5055.0	5180.6	Shannon
6989.0	7156.8	Niobrara
7277.0	7444.8	Codell
7723.0	7890.8	J Sand
7794.0	7961.8	A Marker

CASING DETAILS

TVD	MD	Name	Size
860.0	860.0	Surface	8.625
7873.0	8040.8	Production	4.500