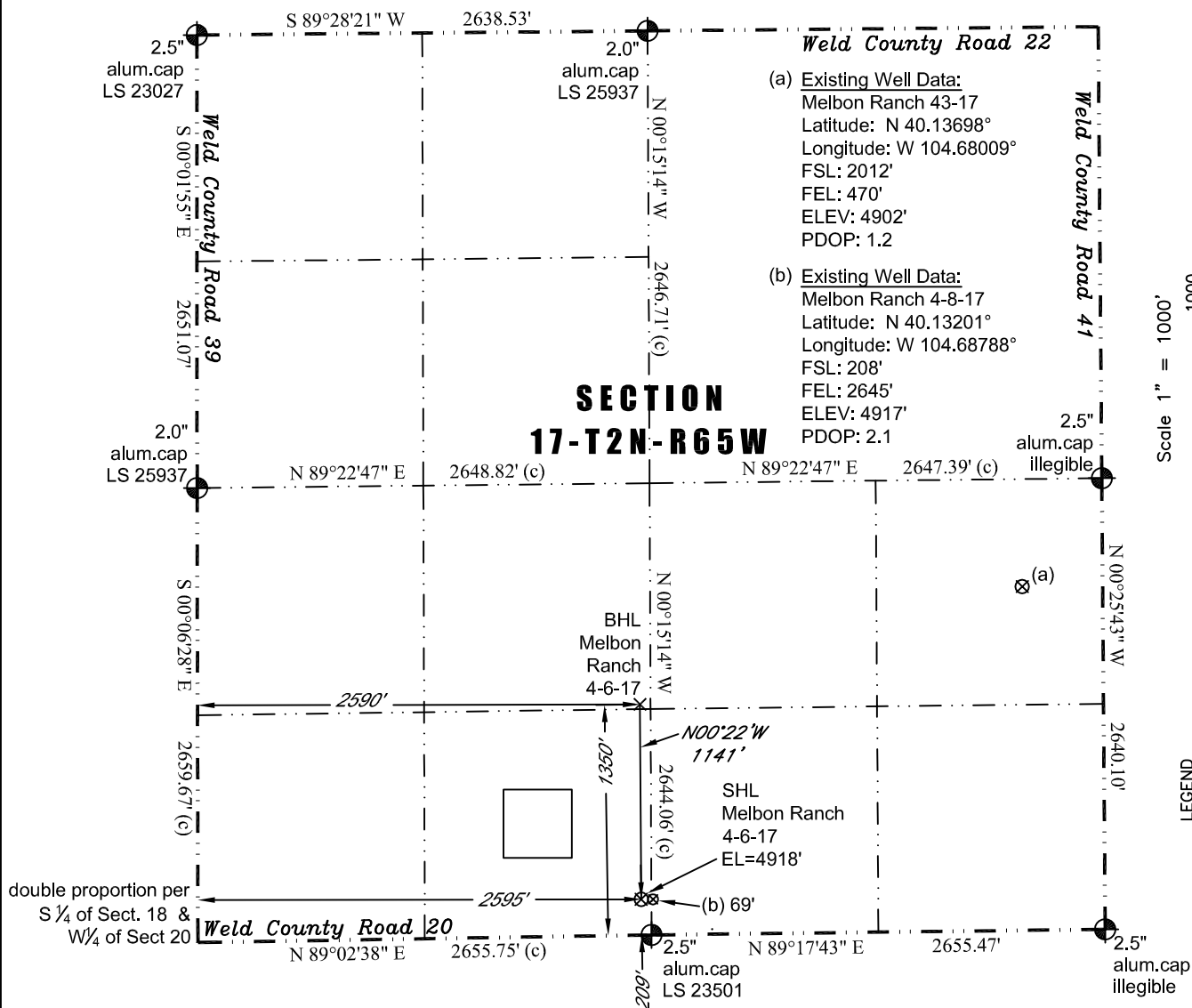


PLS Group, LLC  
109 Coronado Ct. - Bldg. 7  
Fort Collins, Colorado 80525  
P. 970-282-3446 Fx. 970-377-6767

# WELL LOCATION CERTIFICATE

THIS MAP DOES NOT REPRESENT A BOUNDARY SURVEY



Scale 1" = 1000'  
approximate scale

LEGEND  
— found survey monument  
— calculated dimension  
(c)

In accordance with a request from Jay Knutson of EnCana Oil & Gas (USA) Inc., PLS Group, LLC has determined the location of the **Melbon Ranch 4-6-17** well site to be SHL: 209' FSL and 2595' FWL, (BHL 1350' FSL and 2590' FWL), as measured at ninety (90) degrees from the section lines of Section 17, Township 2 North, Range 65 West of the 6th Principal Meridian, Weld County Colorado.

## Proposed Surface Hole Data:

Latitude: N 40.13201° (BHL: 40.13514°)  
Longitude: W 104.68813° (BHL: 104.68812°)  
PDOP: 1.6

## Nearest:

Building 453' southwest  
Public Road 194' south  
Property Line 60' east  
Existing Well: Melbon Ranch 4-8-17 69' east

Above Ground Utility 1,300' southeast  
Railroad 24,377' southeast  
Well Window: SHL is 473' outside

I hereby certify that this Well Location Certificate was prepared by me or under my direct supervision on 9/5/2011 for and on behalf of EnCana Oil & Gas (USA) Inc. That it is not a Land Survey Plat or an Improvement Survey Plat and that it is not to be relied upon for establishment of fences, buildings, or other future improvement lines.

John Robert McGehee LS#38219  
Well: Melbon Ranch 4-6-17 WLC