

EnCana Corporation

Planning Report - Geographic

Database:	EDM	Local Co-ordinate Reference:	Well Melbon Ranch 23-17
Company:	DJ/Paradox/WTX	TVD Reference:	WELL @ 4953.0ft (Original Well Elev)
Project:	Wattenberg	MD Reference:	WELL @ 4953.0ft (Original Well Elev)
Site:	New Drills	North Reference:	True
Well:	Melbon Ranch 23-17	Survey Calculation Method:	Minimum Curvature
Wellbore:	Wellbore #1		
Design:	Melbon Ranch 23-17		

Project	Wattenberg,		
Map System:	US State Plane 1983	System Datum:	Mean Sea Level
Geo Datum:	North American Datum 1983		
Map Zone:	Colorado Northern Zone		

Site		New Drills				
Site Position:		Northing:	1,278,589.08ft	Latitude:	40° 5' 49.848 N	
From:	Lat/Long	Easting:	3,130,247.44ft	Longitude:	105° 2' 3.912 W	
Position Uncertainty:		ft	Slot Radius:	in	Grid Convergence:	0.30 °

Well	Melbon Ranch 23-17					
Well Position	+N-S	13,815.3 ft	Northing:	1,293,273.26 ft	Latitude:	40° 8' 8.196 N
	+E-W	95,533.3 ft	Easting:	3,225,650.84 ft	Longitude:	104° 41' 34.548 W
Position Uncertainty		ft	Wellhead Elevation:	ft	Ground Level:	4,940.0 ft

Wellbore	Wellbore #1				
Magnetics	Model Name	Sample Date	Declination (°)	Dip Angle (°)	Field Strength (nT)
	IGRF200510	12/31/2009	8.96	66.91	53,172

Design	Melbon Ranch 23-17				
Audit Notes:					
Version:	Phase:	PROTOTYPE		Tie On Depth:	0.0
Vertical Section:	Depth From (TVD) (ft)	+N/-S (ft)	+E/-W (ft)	Direction (°)	
	0.0	0.0	0.0	58.41	

Plan Sections										
Measured Depth (ft)	Inclination (°)	Azimuth (°)	Vertical Depth (ft)	+N/-S (ft)	+E/-W (ft)	Dogleg Rate (°/100ft)	Build Rate (°/100ft)	Turn Rate (°/100ft)	TFO (°)	Target
0.0	0.00	0.00	0.0	0.0	0.0	0.00	0.00	0.00	0.00	
900.0	0.00	0.00	900.0	0.0	0.0	0.00	0.00	0.00	0.00	
1,352.4	9.05	58.41	1,350.6	18.7	30.4	2.00	2.00	0.00	58.41	
6,471.0	9.05	58.41	6,405.4	440.3	716.1	0.00	0.00	0.00	0.00	
6,923.5	0.00	0.00	6,856.0	459.0	746.5	2.00	-2.00	0.00	180.00	
7,973.5	0.00	0.00	7,906.0	459.0	746.5	0.00	0.00	0.00	0.00	Melbon Ranch 23-1

EnCana Corporation

Planning Report - Geographic

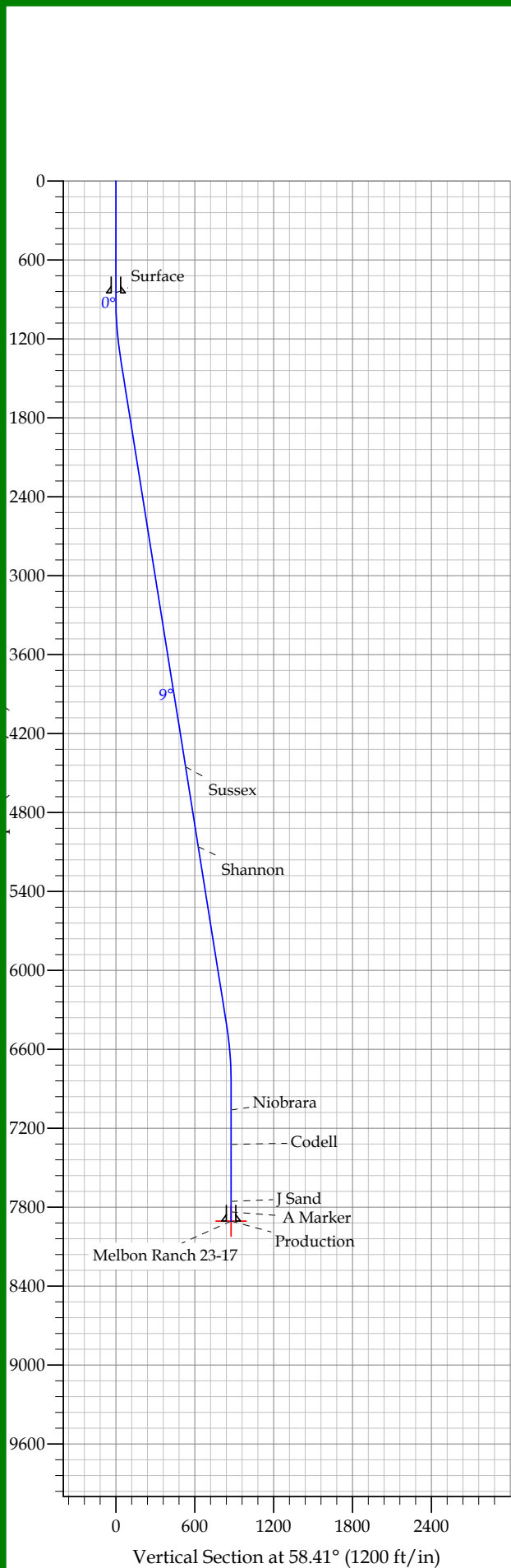
Database:	EDM	Local Co-ordinate Reference:	Well Melbon Ranch 23-17
Company:	DJ/Paradox/WTX	TVD Reference:	WELL @ 4953.0ft (Original Well Elev)
Project:	Wattenberg	MD Reference:	WELL @ 4953.0ft (Original Well Elev)
Site:	New Drills	North Reference:	True
Well:	Melbon Ranch 23-17	Survey Calculation Method:	Minimum Curvature
Wellbore:	Wellbore #1		
Design:	Melbon Ranch 23-17		

Planned Survey										
Measured Depth (ft)	Inclination (°)	Azimuth (°)	Vertical Depth (ft)	+N/-S (ft)	+E/-W (ft)	Map Northing (ft)	Map Easting (ft)	Latitude	Longitude	
0.0	0.00	0.00	0.0	0.0	0.0	1,293,273.26	3,225,650.84	40° 8' 8.196 N	104° 41' 34.548 W	
850.0	0.00	0.00	850.0	0.0	0.0	1,293,273.26	3,225,650.84	40° 8' 8.196 N	104° 41' 34.548 W	
Surface										
900.0	0.00	0.00	900.0	0.0	0.0	1,293,273.26	3,225,650.84	40° 8' 8.196 N	104° 41' 34.548 W	
1,352.4	9.05	58.41	1,350.6	18.7	30.4	1,293,292.21	3,225,681.04	40° 8' 8.380 N	104° 41' 34.157 W	
4,494.0	9.05	58.41	4,453.0	277.5	451.3	1,293,554.82	3,226,099.55	40° 8' 10.938 N	104° 41' 28.738 W	
Sussex										
5,108.6	9.05	58.41	5,060.0	328.1	533.6	1,293,606.20	3,226,181.44	40° 8' 11.438 N	104° 41' 27.677 W	
Shannon										
6,471.0	9.05	58.41	6,405.4	440.3	716.1	1,293,720.09	3,226,362.94	40° 8' 12.547 N	104° 41' 25.327 W	
6,923.5	0.00	0.00	6,856.0	459.0	746.5	1,293,739.04	3,226,393.14	40° 8' 12.732 N	104° 41' 24.936 W	
7,128.5	0.00	0.00	7,061.0	459.0	746.5	1,293,739.04	3,226,393.14	40° 8' 12.732 N	104° 41' 24.936 W	
Niobrara										
7,390.5	0.00	0.00	7,323.0	459.0	746.5	1,293,739.04	3,226,393.14	40° 8' 12.732 N	104° 41' 24.936 W	
Codell										
7,823.5	0.00	0.00	7,756.0	459.0	746.5	1,293,739.04	3,226,393.14	40° 8' 12.732 N	104° 41' 24.936 W	
J Sand										
7,903.5	0.00	0.00	7,836.0	459.0	746.5	1,293,739.04	3,226,393.14	40° 8' 12.732 N	104° 41' 24.936 W	
A Marker										
7,973.5	0.00	0.00	7,906.0	459.0	746.5	1,293,739.04	3,226,393.14	40° 8' 12.732 N	104° 41' 24.936 W	
Production - Melbon Ranch 23-17										

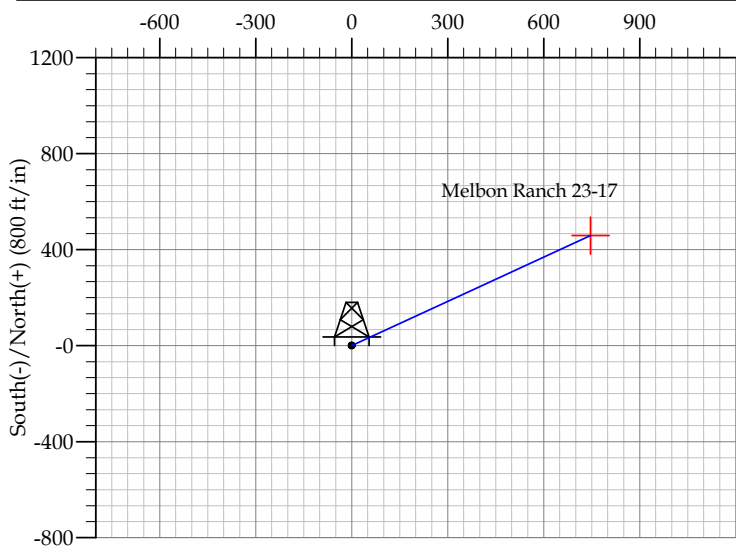
Design Targets										
Target Name	Dip Angle (°)	Dip Dir. (°)	TVD (ft)	+N/-S (ft)	+E/-W (ft)	Northing (ft)	Easting (ft)	Latitude	Longitude	
- hit/miss target										
- Shape										
Melbon Ranch 23-17	0.00	0.00	7,906.0	459.0	746.5	1,293,739.04	3,226,393.14	40° 8' 12.732 N	104° 41' 24.936 W	
- plan hits target										
- Point										

Casing Points					
Measured Depth (ft)	Vertical Depth (ft)	Name	Casing Diameter (in)	Hole Diameter (in)	
850.0	850.0	Surface	8.625	12.250	
7,973.5	7,906.0	Production	4.500	7.785	

Formations						
Measured Depth (ft)	Vertical Depth (ft)	Name	Lithology	Dip (°)	Dip Direction (°)	
4,494.0	4,453.0	Sussex		0.00		
5,108.6	5,060.0	Shannon		0.00		
7,128.5	7,061.0	Niobrara		0.00		
7,390.5	7,323.0	Codell		0.00		
7,823.5	7,756.0	J Sand		0.00		
7,903.5	7,836.0	A Marker		0.00		



REFERENCE INFORMATION												
Co-ordinate (N/E) Reference: Well Melbon Ranch 23-17, True North												
Vertical (TVD) Reference: WELL @ 4953.0ft (Original Well Elev)												
Section (VS) Reference: Slot - (0.0N, 0.0E)												
Measured Depth Reference: WELL @ 4953.0ft (Original Well Elev)												
Calculation Method:												
WELL DETAILS: Melbon Ranch 23-17												
+N/-S		+E/-W		Northing		Ground Level: 4940.0		Easting		Latitude	Longitude	Slot
SECTION DETAILS												
Sec	MD	Inc	Azi	TVD	+N/-S	+E/-W	DLeg	TFace	VSec	Target		
1	0.0	0.00	0.00	0.0	0.0	0.0	0.00	0.00	0.0			
2	900.0	0.00	0.00	900.0	0.0	0.0	0.00	0.00	0.0			
3	1352.4	9.05	58.41	1350.6	18.7	30.4	2.00	58.41	35.7			
4	6471.0	9.05	58.41	6405.4	440.3	716.1	0.00	0.00	840.7			
5	6923.5	0.00	0.00	6856.0	459.0	746.5	2.00	180.00	876.3			
6	7973.5	0.00	0.00	7906.0	459.0	746.5	0.00	0.00	876.3	Melbon Ranch 23-17		



FORMATION TOP DETAILS			
TVDPath	MDPath	Formation	
4453.0	4494.0	Sussex	
5060.0	5108.6	Shannon	
7061.0	7128.5	Niobrara	
7323.0	7390.5	Codell	
7756.0	7823.5	J Sand	
7836.0	7903.5	A Marker	
CASING DETAILS			
TVD	MD	Name	Size
850.0	850.0	Surface	8.625
7906.0	7973.5	Production	4.500