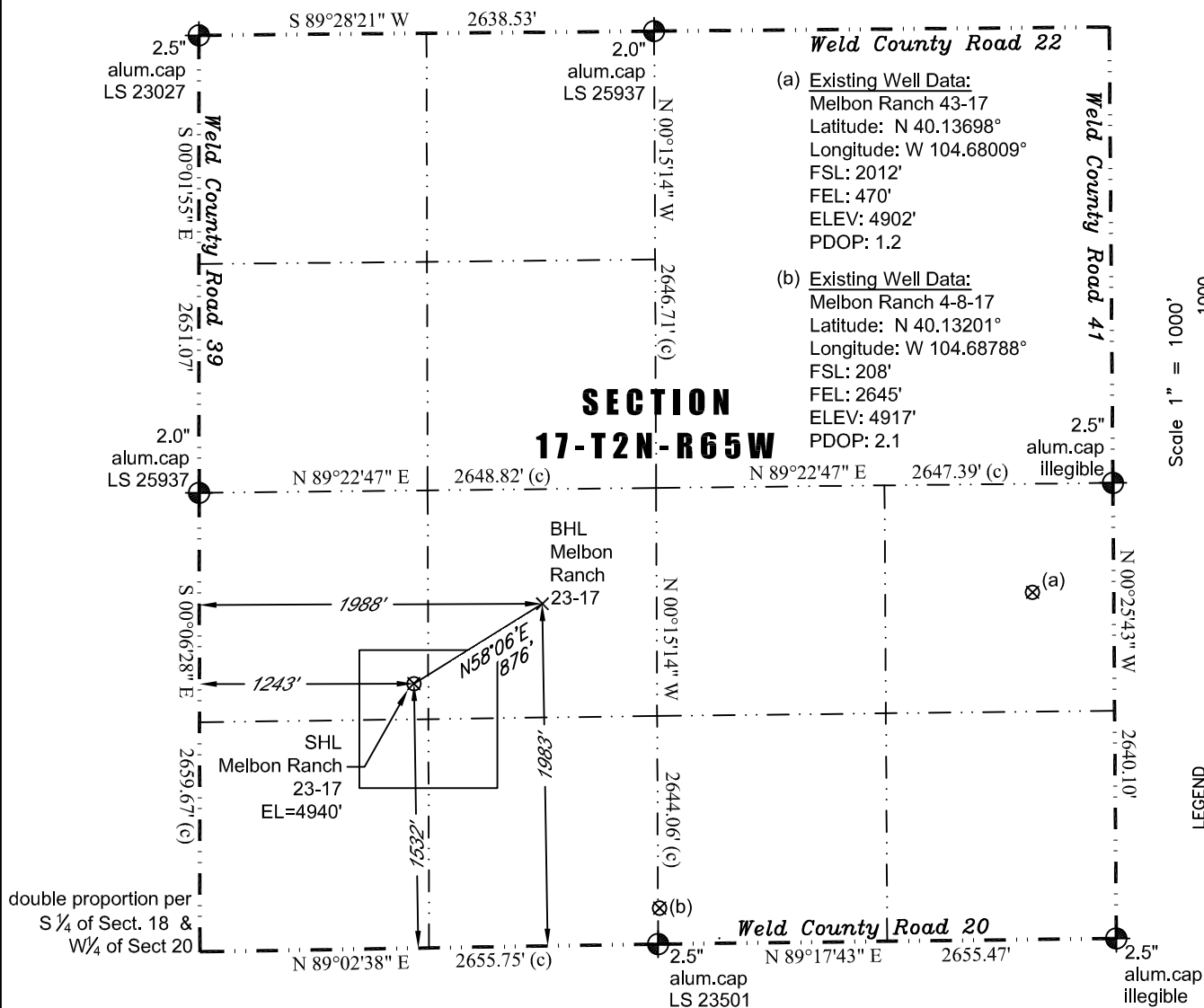


PLS Group, LLC  
109 Coronado Ct. - Bldg. 7  
Fort Collins, Colorado 80525  
P. 970-282-3446 Fx. 970-377-6767

# WELL LOCATION CERTIFICATE

THIS MAP DOES NOT REPRESENT A BOUNDARY SURVEY



In accordance with a request from Jay Knutson of EnCana Oil & Gas (USA) Inc., PLS Group, LLC has determined the location of the **Melbon Ranch 23-17** well site to be SHL: 1532' FSL and 1243' FWL, (BHL 1983' FSL and 1988' FWL), as measured at ninety (90) degrees from the section lines of Section 17, Township 2 North, Range 65 West of the 6th Principal Meridian, Weld County Colorado.

## Proposed Surface Hole Data:

Latitude: N 40.13561° (BHL: 40.13687°)  
Longitude: W 104.69293° (BHL: 104.69026°)  
PDOP: 1.4

## Nearest:

Building 2,072' southeast	Above Ground Utility 3,041' southeast
Public Road 1,514' south	Railroad 26,254' southeast
Property Line 1,120' north	Well Window: SHL is 195' inside
Existing Well: Melbon Ranch 4-8-17	1,928' southeast

## Notes:

- Bearings and distances based on NAD 83 Colorado North State Plane Coordinates using RTK GPS observations taken 8/20/11 by operator Craig Burke.
- Conversion factor to ground (1.000273817).
- Elevations based on NAVD 88 GPS heights and Geoid 2003 corrections.
- See Location Drawing for visible improvements within 400 feet of Pad Site.
- The surface use is irrigated corn field.

**NOTICE:** According to Colorado law you must commence any legal action based upon any defect in this W.L.C. within three years after you first discover such defect. In no event may any action based upon any defect in this W.L.C. be commenced more than ten years from this said date of the certification shown hereon.

I hereby certify that this Well Location Certificate was prepared by me or under my direct supervision on 9/5/2011 for and on behalf of EnCana Oil & Gas (USA) Inc. That it is not a Land Survey Plat or an Improvement Survey Plat and that it is not to be relied upon for establishment of fences, buildings, or other future improvement lines.

John Robert McGehee LS#38219  
Well: Melbon Ranch 23-17 WLC