

1625 Broadway
Suite 2000
Denver, CO 80202

Tel: 303.228.4000
Fax: 303.228.4280
www.nobleenergyinc.com



August 19, 2011

Colorado Oil and Gas Conservation Commission
The Chancery Building
1120 Lincoln Street, Suite 801
Denver, CO 80203
Attn: Mr. David Neslin, Director

RE: Wells Ranch USX AA25-69HN
Niobrara New Drill
Township 6 North, Range 63 West, 6th P.M.
Section 25: NW/4NW/4: 1002' FNL & 302' FWL (Surface Location)
Section 25: NW/4NW/4: 293' FNL & 804' FWL (Beginning of Lateral)
Section 25: NE/4NE/4: 300' FNL & 535' FEL (Bottom Hole Location)
Weld County, Colorado

Mr. Neslin:

Noble Energy, Inc. ("NEI") is planning to drill the captioned boundary well in accordance with the provisions of COGCC Rule 318A.e.

NEI's proposed wellbore spacing unit consists of the N/2N/2 Sec. 25, S/2S/2, Sec. 24, T6N, R63W, creating a 320-acre wellbore spacing unit for the Niobrara formation. NEI is the only owner within the proposed wellbore spacing unit, therefore NEI hereby attests that no notice letters are required under COGCC Rule 318A.e.(6).

Enclosed are copies of the following documents to assist you in your review and approval of NEI's proposed APD for the captioned well:

- Map illustrating the proposed wellbore spacing unit and number of Codell/Niobrara/J Sand wells located within the existing 160-acre governmental quarter section(s) (N/2) to be less than eight (8) in accordance with COGCC Rule 318A.f.
- Plat illustrating proposed wellbore spacing unit on existing location plat.

Thank you for your attention to the enclosed. NEI respectfully requests that the COGCC review the enclosed information and approve the Application for Permit to Drill the captioned well.

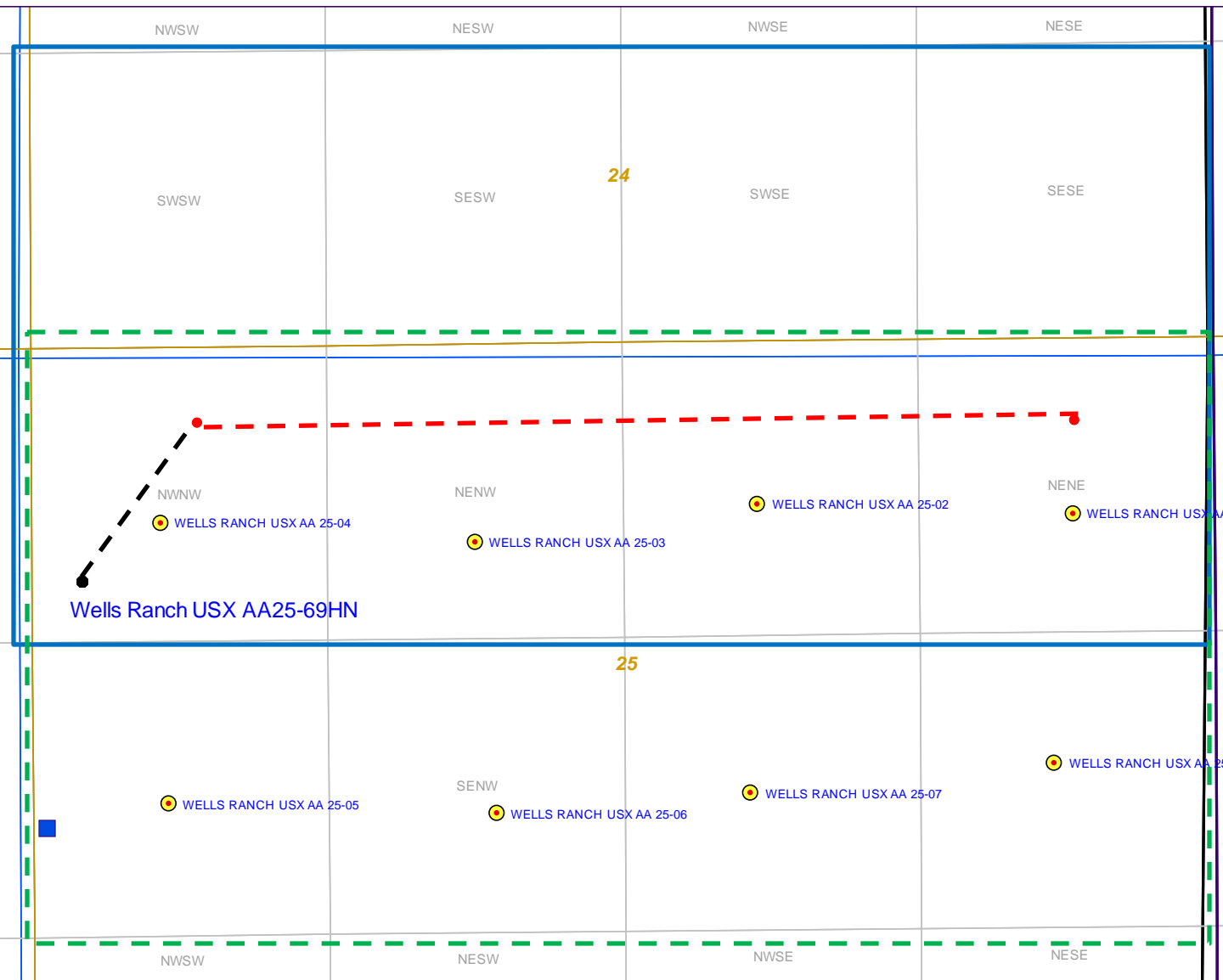
Sincerely,

Justin Garrett
Regulatory Specialist
Noble Energy Inc.

Wells Ranch USX AA25-69HN

Proposed Spacing Unit - Noble Energy, Inc

N/2N/2 Section 25, Township 6 North, Range 63 West S/2S/2 Section 24, Township 6 North, Range 63 West



Legend



Proposed 320 acre spacing unit



Bottom Hole Location



Bottom Hole Located N/2, Sec. 25, T6N, R63W

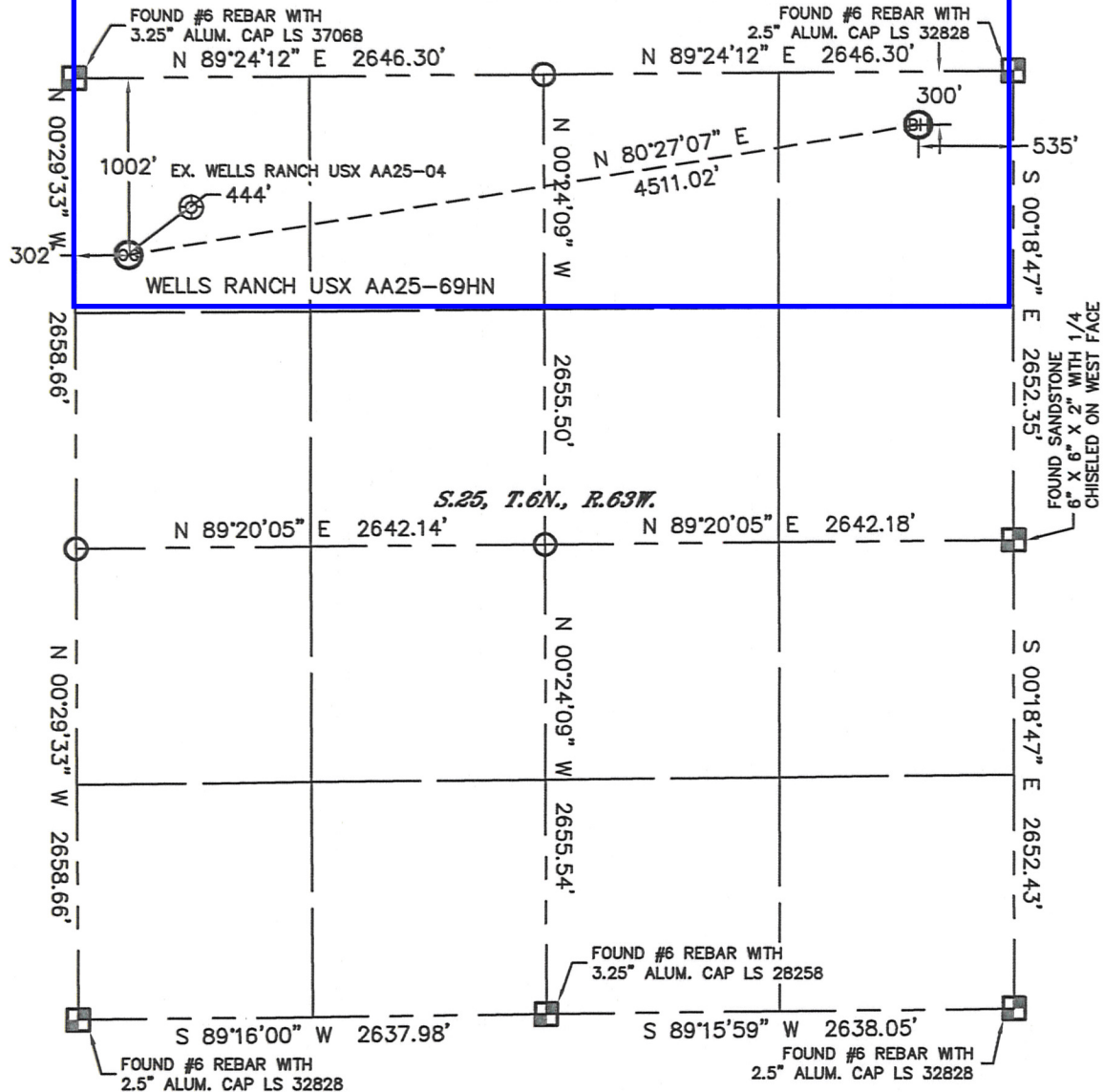
**The governmental ¼ Section has less than 8 bottom hole wells producing from the
Codell, Niobrara, and J-Sand formations.**

Lat40^o, Inc. 1635 Foxtrail Drive, Suite 325 Loveland, CO 970-776-3321

WELL LOCATION CERTIFICATE

THIS MAP DOES NOT REPRESENT A BOUNDARY SURVEY

SECTION: 25
TOWNSHIP: 6N
RANGE: 63W



In accordance with a request from Sean Casper with Noble Energy Inc., Lat40^o, Inc. has determined the surface location of the WELLS RANCH USX AA25-69HN to be 1002' from the NORTH line and 302' from the WEST line and the bottom hole to be 300' from the NORTH line and 535' from the EAST line as measured at right angles from the section lines of Section 25, Township 6 North, Range 63 West of the Sixth Principal Meridian, County of Weld, State of Colorado.

I hereby state that this Well Location Certificate was prepared by me, or under my direct supervision, that the fieldwork was completed on 7/12/11, for and on behalf of Noble Energy Inc. That this is not a Land Survey Plat or an Improvement Survey Plat, and that it is not to be relied upon for establishment of fence, building, or other future improvement lines.

NOTE:

- 1) Bearings shown are Grid Bearings of the Colorado State Plane Coordinate System, North Zone, North American Datum 1983/2007. The lineal dimensions as contained herein are based upon the "U.S. Survey Foot."
- 2) Ground elevations are based on an observed GPS elevation (NAVD 1988 DATUM).
- 3) NEAREST EXISTING WELL: WELLS RANCH USX AA25-04, 444'
- 4) IMPROVEMENTS: See LOCATION DRAWING for all visible improvements within 400' of disturbed area.
- 5) SURFACE USE: RANGELAND
- 6) INSTRUMENT OPERATOR: ADAM KELLY

NOTE

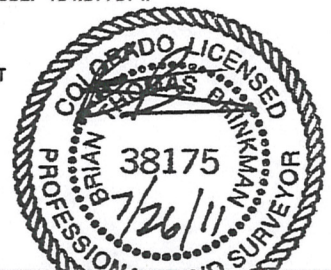
According to Colorado law, you must commence any legal action based upon any defect in this W.L.C. within three years after you discover such defect. In no event, may any action based upon any defect in this survey be commenced more than ten years after the date of the certificate shown hereon. (13-80-105 C.R.S.)

LEGEND

- = ALIQUOT MONUMENT AS DESCRIBED
○ = CALCULATED POSITION

SURFACE LOCATION
LATITUDE: 40.46199°N
LONGITUDE: 104.39353°W
PDOP: 1.9
ELEV: 4815'
1/4, 1/4: NW1/4NW1/4
NEAREST PROPERTY LINE: 302' WEST

BOTTOM HOLE
LATITUDE: 40.46389°N
LONGITUDE: 104.37751°W



Brian T. Brinkman—On behalf of Lat40^o, Inc.
Colorado Licensed Professional
Land Surveyor No. 38175

PROJECT#: 2011115