

Well Name: **Coors Energy 25LD**

Surface Location: Coors Energy 13-25D Pad Sec.25-T3N-R64W
 North American Datum 1983 US State Plane 1983 Colorado Northern Zone

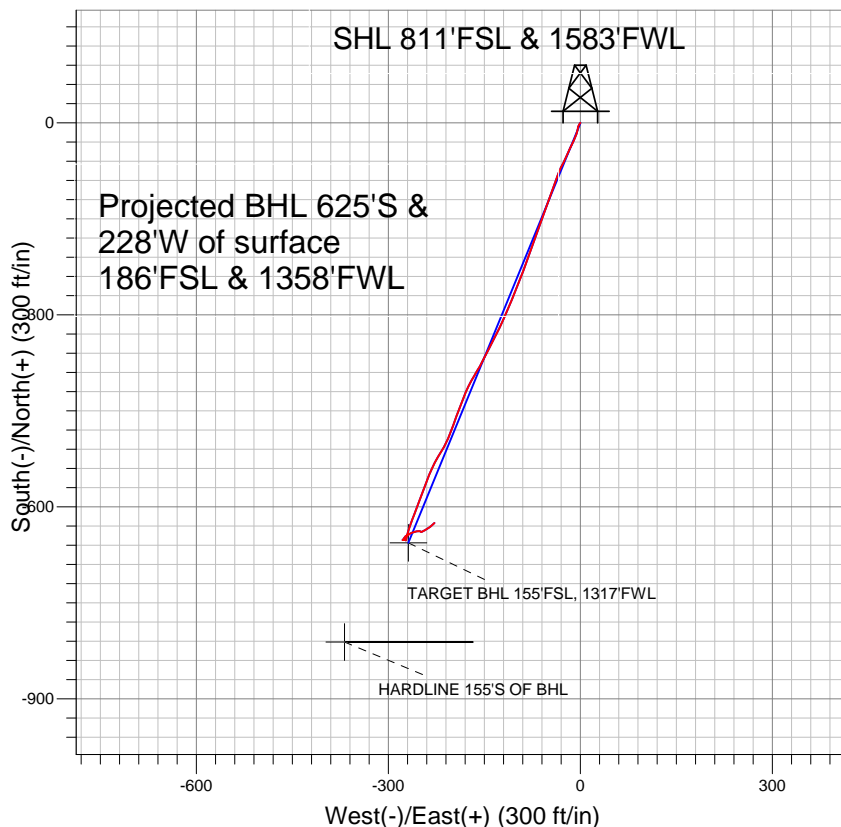
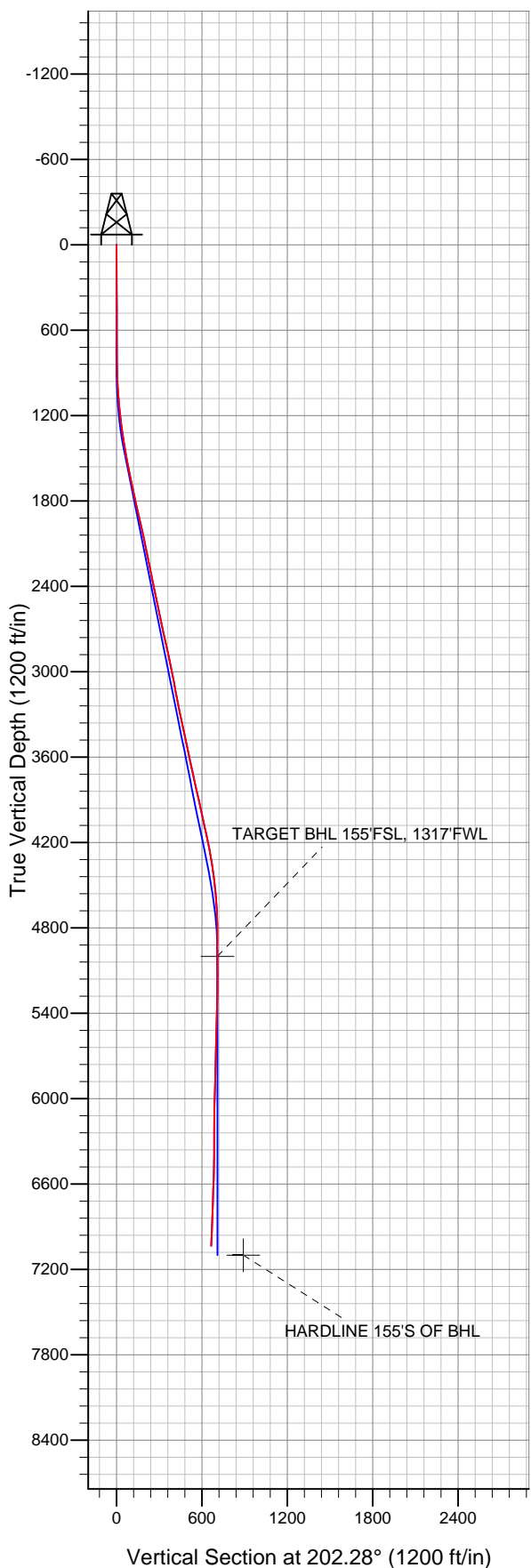
Ground Elevation: 4815.0

+N/-S	+E/-W	Northing	Easting	Latitude	Longitude
0.0	0.0	1314119.13	3278372.66	40.191360	-104.503540

Original Well Elev WELL @ 4828.0ft (Original Well Elev)

Slot

PETROLEUM DEVELOPMENT CORP Weld County CO



LEGEND

- Coors Energy 25LD, Wellbore #1, Plan #3 (1-25-11) V0
- Wellbore #1
- Survey #1

Final Survey Plot

Projected Final Survey -
 7105'MD & 7035'TVD @ 665'VS
 2.2 deg Inc 47.3 deg AZ

Project: SEC.25-T3N-R64W
 Site: Coors Energy 13-25D Pad Sec.25-T3N-R64W
 Well: Coors Energy 25LD
 Plan: Wellbore #1



Directional

PETROLEUM DEVELOPMENT CORP Weld County CO

SEC.25-T3N-R64W

Coors Energy 13-25D Pad Sec.25-T3N-R64W

Coors Energy 25LD

Wellbore #1

Survey: Survey #1

Standard Survey Report

25 July, 2011

Company:	PETROLEUM DEVELOPMENT CORP Weld County CO	Local Co-ordinate Reference:	Well Coors Energy 25LD
Project:	SEC.25-T3N-R64W	TVD Reference:	WELL @ 4828.0ft (Original Well Elev)
Site:	Coors Energy 13-25D Pad Sec.25-T3N-R64W	MD Reference:	WELL @ 4828.0ft (Original Well Elev)
Well:	Coors Energy 25LD	North Reference:	True
Wellbore:	Wellbore #1	Survey Calculation Method:	Minimum Curvature
Design:	Wellbore #1	Database:	Landmark

Project	SEC.25-T3N-R64W, Weld County, Colorado		
Map System:	US State Plane 1983	System Datum:	Mean Sea Level
Geo Datum:	North American Datum 1983		
Map Zone:	Colorado Northern Zone		Using geodetic scale factor

Site	Coors Energy 13-25D Pad Sec.25-T3N-R64W				
Site Position:		Northing:	1,314,206.56ft	Latitude:	40.191600
From:	Lat/Long	Easting:	3,278,371.68ft	Longitude:	-104.503540
Position Uncertainty:	0.0 ft	Slot Radius:	"	Grid Convergence:	0.64 °

Well	Coors Energy 25LD					
Well Position	+N-S	0.0 ft	Northing:	1,314,119.13 ft	Latitude:	40.191360
	+E-W	0.0 ft	Easting:	3,278,372.66 ft	Longitude:	-104.503540
Position Uncertainty		0.0 ft	Wellhead Elevation:	ft	Ground Level:	4,815.0 ft

Wellbore	Wellbore #1				
Magnetics	Model Name	Sample Date	Declination (°)	Dip Angle (°)	Field Strength (nT)
	IGRF2010	1/25/2011	8.76	66.94	53,091

Design	Wellbore #1				
Audit Notes:					
Version:	1.0	Phase:	ACTUAL	Tie On Depth:	0.0
Vertical Section:	Depth From (TVD) (ft)	+N/-S (ft)	+E/-W (ft)	Direction (°)	
	0.0	0.0	0.0	202.28	

Survey Program	Date 7/25/2011			
From (ft)	To (ft)	Survey (Wellbore)	Tool Name	Description
831.0	7,105.0	Survey #1 (Wellbore #1)	MWD	MWD - Standard

Survey									
Measured Depth (ft)	Inclination (°)	Azimuth (°)	Vertical Depth (ft)	+N/-S (ft)	+E/-W (ft)	Vertical Section (ft)	Dogleg Rate (°/100ft)	Build Rate (°/100ft)	Turn Rate (°/100ft)
0.0	0.00	0.00	0.0	0.0	0.0	0.0	0.00	0.00	0.00
831.0	0.40	219.10	831.0	-2.3	-1.8	2.8	0.05	0.05	0.00
926.0	2.20	207.50	926.0	-4.1	-2.9	4.9	1.91	1.89	-12.21
1,021.0	4.60	188.30	1,020.8	-9.5	-4.3	10.4	2.76	2.53	-20.21
1,116.0	4.80	199.00	1,115.5	-17.0	-6.1	18.1	0.95	0.21	11.26
1,211.0	5.80	203.30	1,210.1	-25.2	-9.3	26.9	1.13	1.05	4.53
1,306.0	7.80	207.30	1,304.4	-35.3	-14.2	38.1	2.16	2.11	4.21
1,401.0	8.90	203.00	1,398.4	-47.8	-20.0	51.8	1.33	1.16	-4.53
1,496.0	10.60	207.40	1,492.0	-62.4	-26.9	67.9	1.95	1.79	4.63
1,591.0	12.00	201.60	1,585.2	-79.3	-34.5	86.5	1.90	1.47	-6.11
1,685.0	12.30	198.70	1,677.1	-97.9	-41.4	106.2	0.72	0.32	-3.09
1,780.0	12.40	200.00	1,769.9	-117.0	-48.1	126.5	0.31	0.11	1.37

Company:	PETROLEUM DEVELOPMENT CORP Weld County CO	Local Co-ordinate Reference:	Well Coors Energy 25LD
Project:	SEC.25-T3N-R64W	TVD Reference:	WELL @ 4828.0ft (Original Well Elev)
Site:	Coors Energy 13-25D Pad Sec.25-T3N-R64W	MD Reference:	WELL @ 4828.0ft (Original Well Elev)
Well:	Coors Energy 25LD	North Reference:	True
Wellbore:	Wellbore #1	Survey Calculation Method:	Minimum Curvature
Design:	Wellbore #1	Database:	Landmark

Survey									
Measured Depth (ft)	Inclination (°)	Azimuth (°)	Vertical Depth (ft)	+N/-S (ft)	+E/-W (ft)	Vertical Section (ft)	Dogleg Rate (°/100ft)	Build Rate (°/100ft)	Turn Rate (°/100ft)
1,875.0	12.80	199.70	1,862.6	-136.5	-55.1	147.2	0.43	0.42	-0.32
1,970.0	12.40	200.00	1,955.3	-156.0	-62.2	167.9	0.43	-0.42	0.32
2,065.0	11.90	198.90	2,048.2	-174.9	-68.8	187.9	0.58	-0.53	-1.16
2,160.0	11.60	201.20	2,141.2	-193.1	-75.4	207.2	0.59	-0.32	2.42
2,255.0	12.00	200.20	2,234.2	-211.2	-82.3	226.7	0.47	0.42	-1.05
2,350.0	11.80	200.30	2,327.1	-229.6	-89.1	246.2	0.21	-0.21	0.11
2,445.0	11.50	199.80	2,420.2	-247.6	-95.7	265.4	0.33	-0.32	-0.53
2,540.0	11.00	202.60	2,513.3	-264.9	-102.4	283.9	0.78	-0.53	2.95
2,635.0	12.00	202.60	2,606.4	-282.4	-109.6	302.9	1.05	1.05	0.00
2,730.0	12.50	203.60	2,699.3	-300.9	-117.5	323.0	0.57	0.53	1.05
2,825.0	13.00	205.40	2,791.9	-320.0	-126.2	344.0	0.67	0.53	1.89
2,919.0	12.40	208.20	2,883.6	-338.4	-135.6	364.6	0.91	-0.64	2.98
3,014.0	11.50	206.60	2,976.6	-355.9	-144.6	384.2	1.01	-0.95	-1.68
3,109.0	11.00	207.70	3,069.7	-372.4	-153.1	402.6	0.57	-0.53	1.16
3,204.0	10.20	211.20	3,163.1	-387.6	-161.6	420.0	1.08	-0.84	3.68
3,299.0	11.80	209.20	3,256.4	-403.3	-170.7	437.9	1.73	1.68	-2.11
3,394.0	12.20	202.90	3,349.3	-421.0	-179.4	457.6	1.44	0.42	-6.63
3,489.0	12.40	199.70	3,442.1	-439.9	-186.7	477.8	0.75	0.21	-3.37
3,584.0	12.00	201.10	3,535.0	-458.7	-193.7	497.9	0.52	-0.42	1.47
3,678.0	11.90	199.80	3,626.9	-476.9	-200.5	517.3	0.31	-0.11	-1.38
3,772.0	12.00	203.20	3,718.9	-495.0	-207.6	536.8	0.76	0.11	3.62
3,868.0	12.60	212.60	3,812.7	-513.0	-217.2	557.1	2.17	0.63	9.79
3,963.0	12.80	208.10	3,905.4	-531.0	-227.8	577.7	1.06	0.21	-4.74
4,058.0	12.40	200.80	3,998.1	-549.8	-236.3	598.4	1.73	-0.42	-7.68
4,153.0	12.60	200.30	4,090.9	-569.1	-243.6	619.0	0.24	0.21	-0.53
4,248.0	11.50	200.60	4,183.8	-587.7	-250.5	638.8	1.16	-1.16	0.32
4,343.0	10.40	201.40	4,277.0	-604.5	-256.9	656.8	1.17	-1.16	0.84
4,438.0	8.90	199.90	4,370.7	-619.4	-262.6	672.7	1.60	-1.58	-1.58
4,531.0	7.30	199.20	4,462.8	-631.8	-267.0	685.8	1.72	-1.72	-0.75
4,626.0	5.00	197.00	4,557.2	-641.4	-270.2	696.0	2.43	-2.42	-2.32
4,721.0	3.60	192.00	4,651.9	-648.3	-272.0	703.0	1.52	-1.47	-5.26
4,816.0	0.90	181.60	4,746.8	-652.0	-272.6	706.7	2.86	-2.84	-10.95
4,911.0	0.90	335.00	4,841.8	-652.0	-273.0	706.9	1.84	0.00	161.47
5,006.0	1.30	266.60	4,936.8	-651.4	-274.4	706.8	1.35	0.42	-72.00
5,069.0	1.50	266.18	4,999.8	-651.5	-275.9	707.5	0.32	0.32	-0.67
TARGET BHL 155'FSL, 1317'FWL									
5,101.0	1.60	266.00	5,031.8	-651.6	-276.8	707.9	0.32	0.32	-0.55
5,196.0	0.20	132.10	5,126.8	-651.8	-278.0	708.5	1.84	-1.47	-140.95
5,291.0	0.60	40.50	5,221.8	-651.5	-277.5	708.1	0.67	0.42	-96.42
5,386.0	1.10	36.70	5,316.8	-650.4	-276.6	706.7	0.53	0.53	-4.00
5,481.0	1.70	34.20	5,411.7	-648.5	-275.3	704.5	0.63	0.63	-2.63
5,576.0	1.80	35.70	5,506.7	-646.1	-273.6	701.7	0.12	0.11	1.58
5,671.0	1.90	80.70	5,601.7	-644.7	-271.2	699.4	1.49	0.11	47.37
5,766.0	1.80	47.90	5,696.6	-643.4	-268.6	697.2	1.10	-0.11	-34.53
5,860.0	1.90	63.80	5,790.6	-641.7	-266.1	694.7	0.55	0.11	16.91
5,955.0	1.80	64.70	5,885.5	-640.4	-263.3	692.4	0.11	-0.11	0.95
6,050.0	2.30	72.10	5,980.5	-639.2	-260.1	690.1	0.59	0.53	7.79
6,145.0	2.80	78.90	6,075.4	-638.2	-256.1	687.6	0.61	0.53	7.16
6,240.0	2.20	91.60	6,170.3	-637.8	-252.0	685.7	0.86	-0.63	13.37
6,335.0	0.90	156.70	6,265.2	-638.5	-249.8	685.5	2.10	-1.37	68.53
6,430.0	0.90	85.80	6,360.2	-639.1	-248.8	685.7	1.10	0.00	-74.63
6,525.0	1.60	64.30	6,455.2	-638.5	-246.9	684.4	0.87	0.74	-22.63
6,620.0	1.80	57.90	6,550.2	-637.1	-244.4	682.2	0.29	0.21	-6.74

Company:	PETROLEUM DEVELOPMENT CORP Weld County CO	Local Co-ordinate Reference:	Well Coors Energy 25LD
Project:	SEC.25-T3N-R64W	TVD Reference:	WELL @ 4828.0ft (Original Well Elev)
Site:	Coors Energy 13-25D Pad Sec.25-T3N-R64W	MD Reference:	WELL @ 4828.0ft (Original Well Elev)
Well:	Coors Energy 25LD	North Reference:	True
Wellbore:	Wellbore #1	Survey Calculation Method:	Minimum Curvature
Design:	Wellbore #1	Database:	Landmark

Survey									
Measured Depth (ft)	Inclination (°)	Azimuth (°)	Vertical Depth (ft)	+N/-S (ft)	+E/-W (ft)	Vertical Section (ft)	Dogleg Rate (°/100ft)	Build Rate (°/100ft)	Turn Rate (°/100ft)
6,715.0	2.30	59.70	6,645.1	-635.4	-241.5	679.5	0.53	0.53	1.89
6,810.0	2.50	58.20	6,740.0	-633.3	-238.1	676.3	0.22	0.21	-1.58
6,905.0	2.70	53.30	6,834.9	-630.9	-234.5	672.7	0.31	0.21	-5.16
7,000.0	2.50	46.60	6,929.8	-628.1	-231.2	668.9	0.38	-0.21	-7.05
7,105.0	2.20	47.30	7,034.7	-625.2	-228.1	665.0	0.29	-0.29	0.67
HARDLINE 155'S OF BHL									

Checked By: _____	Approved By: _____	Date: _____
-------------------	--------------------	-------------