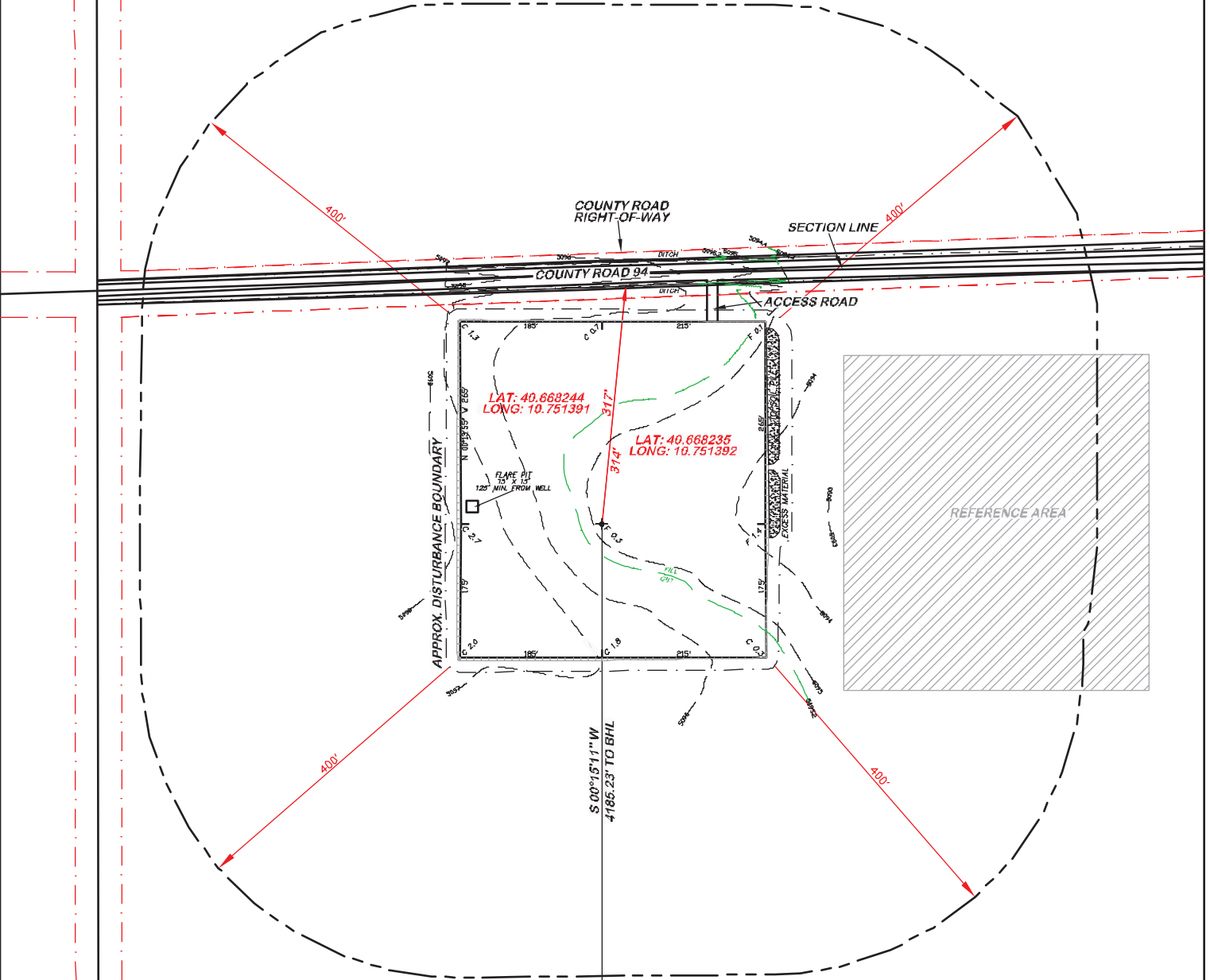
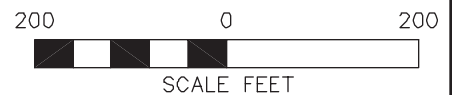


APPROXIMATE DISTURBANCE AREA: 4.9 ACRES±  
 1.0% GRADE ON A EASTERLY SLOPE  
 UNGRADED ELEVATION: 5094.9'  
 FINISHED ELEVATION: 5095.2'



**BEFORE DIGGING  
 CALL FOR  
 UTILITY LINE LOCATION**

NOTE: THE EARTH QUANTITIES ON  
 THIS DRAWING ARE ESTIMATED  
 AND THE USE OF IS AT THE  
 RESPONSIBILITY OF THE USER.



(307) 362-5028

**DRG RIFFIN & ASSOCIATES, INC.**  
 1414 ELK ST., ROCK SPRINGS, WY 82901

DRAWN: 9/6/11 - NDP

SCALE: 1" = 200'

REVISED: 9/15/11 - KRH

DRG JOB No. 18777

REVISED WELL NAME

EXHIBIT 2C

**LOCATION DRAWING**

**CHESAPEAKE ENERGY, LLC.  
 PIERCE LAND 14-8-66 1H  
 SECTION 14, T8N, R66W**

UNGRADED ELEVATION: 5094.9'  
 FINISHED ELEVATION: 5095.2'