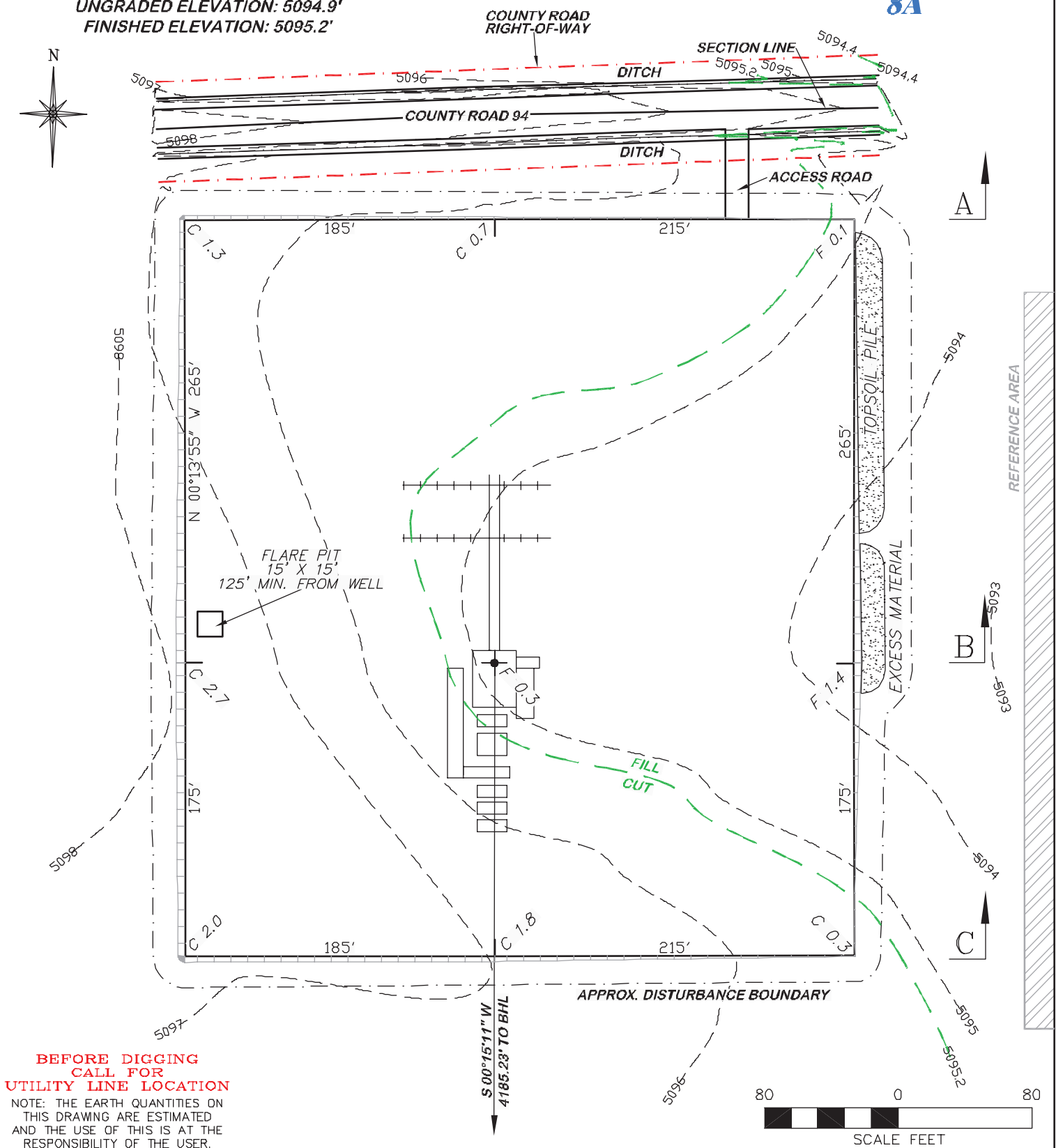


2A ATTACHMENT

8A

UNGRADED ELEVATION: 5094.9'

FINISHED ELEVATION: 5095.2'



BEFORE DIGGING
CALL FOR
UTILITY LINE LOCATION

NOTE: THE EARTH QUANTITIES ON
THIS DRAWING ARE ESTIMATED
AND THE USE OF THIS IS AT THE
RESPONSIBILITY OF THE USER.



RIFFIN & ASSOCIATES, INC.
1414 ELK ST., ROCK SPRINGS, WY 82901

(307) 362-5028

DRAWN: 9/6/11 - NDP

SCALE: 1" = 80'

REVISED: 9/15/11 - KRH

DRG JOB No. 18777

REVISD WELL NAME

EXHIBIT 2

CONSTRUCTION LAYOUT DRAWING 1 OF 3

CHESAPEAKE ENERGY, LLC.
PIERCE LAND 14-8-66 1H
SECTION 14, T8N, R66W

ESTIMATED EARTHWORK

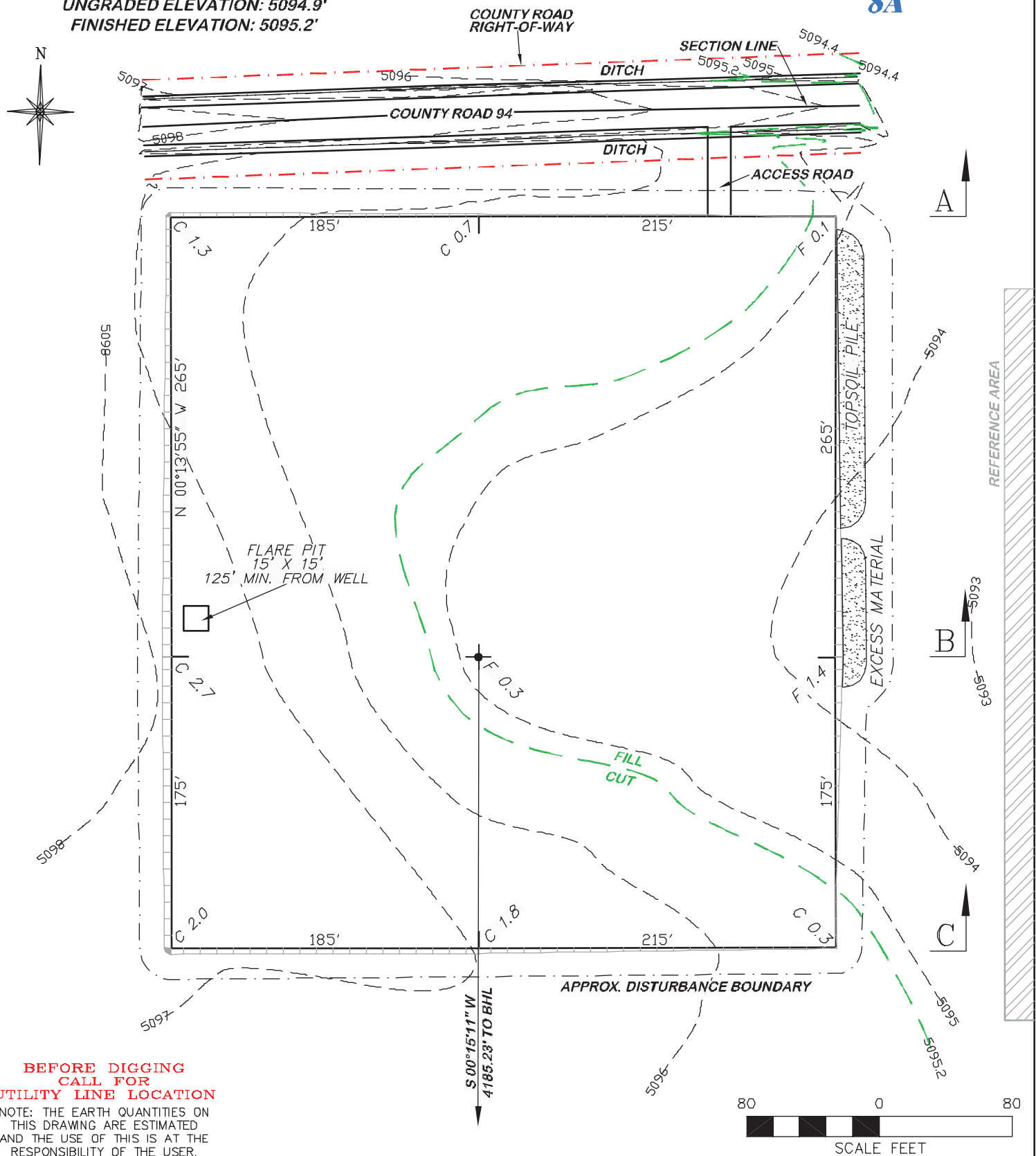
ITEM	CUT	FILL	TOPSOIL	EXCESS
PAD	4543 CY	944 CY	3260 CY	339 CY
PIT	0 CY			0 CY
TOTALS	4543 CY	944 CY	3260 CY	339 CY

2A ATTACHMENT

8A

UNGRADED ELEVATION: 5094.9'

FINISHED ELEVATION: 5095.2'



BEFORE DIGGING
CALL FOR
UTILITY LINE LOCATION

NOTE: THE EARTH QUANTITIES ON
THIS DRAWING ARE ESTIMATED
AND THE USE OF THIS IS AT THE
RESPONSIBILITY OF THE USER.



RIFFIN & ASSOCIATES, INC.
1414 ELK ST., ROCK SPRINGS, WY 82901

(307) 362-5028

DRAWN: 9/6/11 - NDP

SCALE: 1" = 80'

REVISED: 9/15/11 - KRH

DRG JOB No. 18777

REVISIED WELL NAME

EXHIBIT 2A

CONSTRUCTION LAYOUT DRAWING 2 OF 3

CHESAPEAKE ENERGY, LLC.
PIERCE LAND 14-8-66 1H
SECTION 14, T8N, R66W

UNGRADED ELEVATION: 5094.9'
FINISHED ELEVATION: 5095.2'