

R. 66 W.



SCALE 1" = 1000'

T. 10 N.

ROUSE FARMS

30-10-66 1H

UNGRADED ELEVATION:

5494.7'

BASIS OF ELEVATION: USGS SPOT
ELEVATION LOCATED AT THE NE
CORNER SECTION 30, T10N, R66W,
ELEVATION: 5444'

LATITUDE (NAD 83)

NORTH 40.811622 DEG.

LONGITUDE (NAD 83)

WEST 104.822516 DEG.

LATITUDE (NAD 27)

NORTH 40.811641 DEG.

LONGITUDE (NAD 27)

WEST 104.821991 DEG.

NORTHING

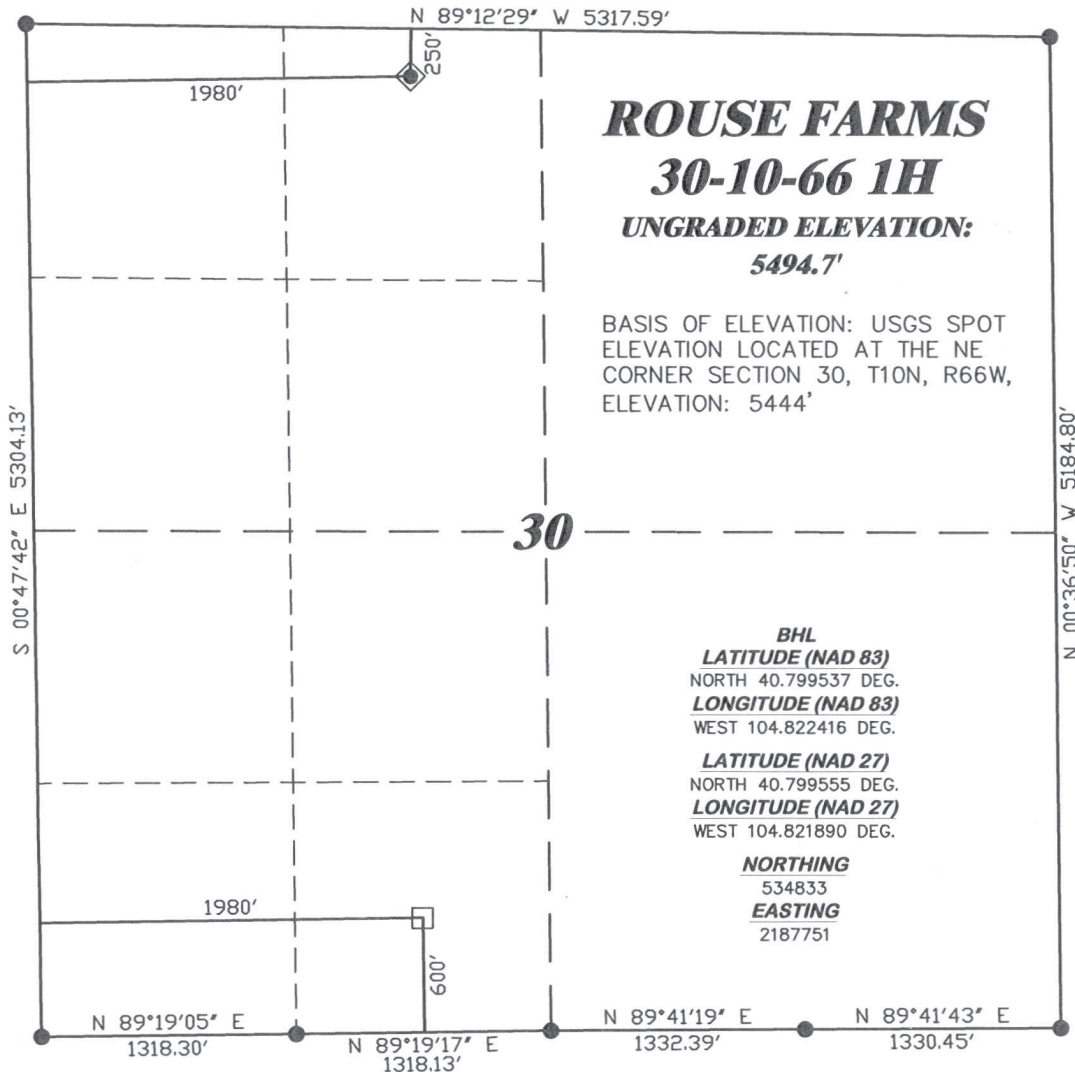
539235.90

EASTING

2187689.08

BASIS OF BEARING/DATUM

SPCS CO NORTH NAD 27
BASED ON DRG CONTROL
POINT "C-391"



NOTES

PRAIRIE LANDS
EXISTING FENCE WITHIN
400' RADIUS OF WELL SITE.

GPS OPERATOR JIM BASSETT
OBSERVED A PDOP OF 2.4.
ALL GPS OBSERVATIONS ARE IN
COMPLIANCE WITH COGCC RULE No.215.

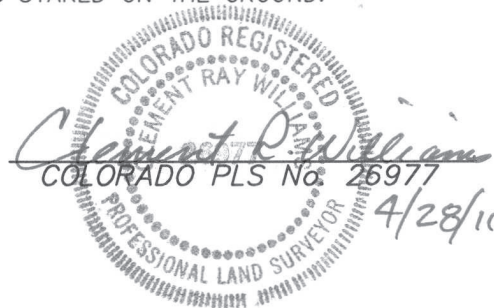


SURVEYOR'S STATEMENT

I, CLEMENT R. WILLIAMS, OF ROCK SPRINGS, WYOMING, HEREBY STATE: THIS MAP WAS MADE FROM NOTES TAKEN DURING AN ACTUAL FIELD SURVEY DONE UNDER MY DIRECT SUPERVISION ON APRIL 20, 2011 AND THAT THIS PLAT CORRECTLY SHOWS THE LOCATION OF ROUSE FARMS 30-10-66 1H AS STAKED ON THE GROUND.

LEGEND

- ◆ WELL LOCATION
- BOTTOM HOLE LOC. (APPROX)
- FOUND MONUMENT
- ▲ PREVIOUSLY FOUND MONUMENT



RIFFIN & ASSOCIATES, INC.
1414 ELK ST., ROCK SPRINGS, WY 82901

(307) 362-5028

DRAWN: 4/27/11 - MMM

SCALE: 1" = 1000'

REVISED: NA

DRG JOB No. 18532

EXHIBIT 1

**PLAT OF DRILLING LOCATION
FOR
CHESAPEAKE ENERGY, LLC.**

**250' F/NL & 1980' F/WL, NENW, SECTION 30,
T. 10 N., R. 66 W., 6th P.M.
WELD COUNTY, COLORADO**