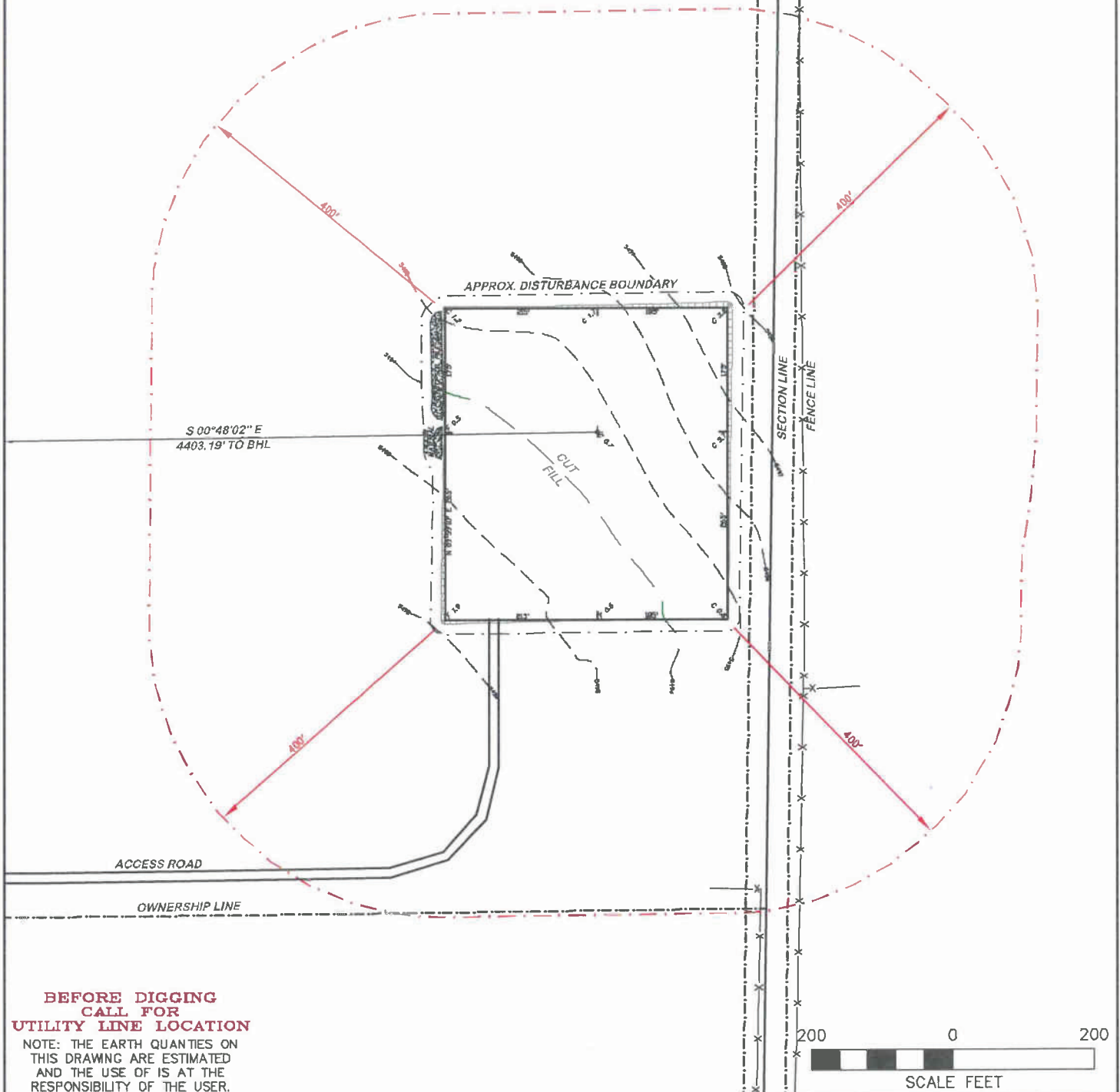


APPROXIMATE DISTURBANCE AREA: 4.9 ACRES±
 1.0% GRADE ON A SOUTHEASTERLY SLOPE
 UNGRADED ELEVATION: 5494.7'
 FINISHED ELEVATION: 5494.0'

2A ATTACHMENT 2



**BEFORE DIGGING
CALL FOR
UTILITY LINE LOCATION**

NOTE: THE EARTH QUANTITIES ON
THIS DRAWING ARE ESTIMATED
AND THE USE OF IS AT THE
RESPONSIBILITY OF THE USER.



DRIFFIN & ASSOCIATES, INC.
 1414 ELK ST., ROCK SPRINGS, WY 82901

(307) 362-5028

DRAWN: 4/27/11 - MMM

SCALE: 1" = 200'

REVISED: 8/28/11 - MMM

DRG JOB No. 18532

REVISED SPOIL PILES & DISTURB.

EXHIBIT 2C

LOCATION DRAWING

CHESAPEAKE ENERGY, LLC.
ROUSE FARMS 30-10-66 1H
SECTION 30, T10N, R66W

UNGRADED ELEVATION: 5494.7'
 FINISHED ELEVATION: 5494.0'