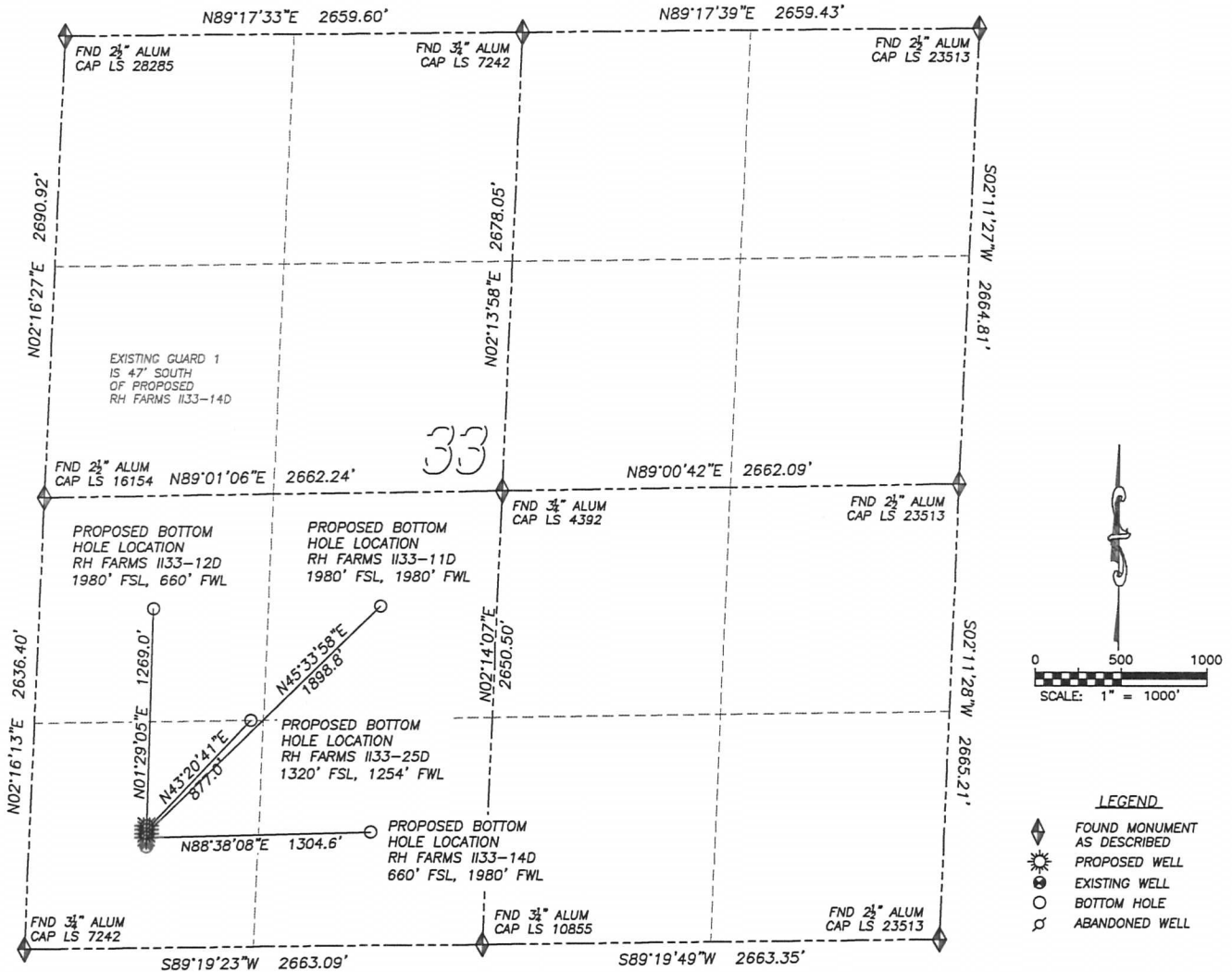


DALEY LAND SURVEYING, INC. PARKER, CO. 80134 303 953 9841

MULTI-WELL PAD DIRECTIONAL LAYOUT RH FARMS II33-12D, 25D, 11D & 14D

SECTION 33, TOWNSHIP 7 NORTH, RANGE 66 WEST OF THE 6TH PRINCIPAL MERIDIAN



NAD 83 LATITUDE AND LONGITUDE

RH FARMS II33-14D
SURFACE HOLE:
LATITUDE: N40.52562°
LONGITUDE: W104.79151°
ELEVATION: 4865'
FOOTAGE: 644' FSL,
678' FWL
PDOP: 2.2
QTR/QTR: SW4/SW4
PROP LINE: 614' SOUTH
BOTTOM HOLE:
LATITUDE: N40.52571°
LONGITUDE: W104.78682°
FOOTAGE: 660' FSL,
1980' FWL

RH FARMS II33-11D
SURFACE HOLE:
LATITUDE: N40.52568°
LONGITUDE: W104.79151°
ELEVATION: 4865'
FOOTAGE: 667' FSL,
678' FWL
PDOP: 2.1
QTR/QTR: SW4/SW4
PROP LINE: 637' SOUTH
BOTTOM HOLE:
LATITUDE: N40.52933°
LONGITUDE: W104.78663°
FOOTAGE: 1980' FSL,
1980' FWL

RH FARMS II33-25D
SURFACE HOLE:
LATITUDE: N40.52574°
LONGITUDE: W104.79150°
ELEVATION: 4865'
FOOTAGE: 689' FSL,
678' FWL
PDOP: 1.5
QTR/QTR: SW4/SW4
PROP LINE: 648' WEST
BOTTOM HOLE:
LATITUDE: N40.52749°
LONGITUDE: W104.78934°
FOOTAGE: 1320' FSL,
1254' FWL

RH FARMS II33-12D
SURFACE HOLE:
LATITUDE: N40.52581°
LONGITUDE: W104.79150°
ELEVATION: 4865'
FOOTAGE: 712' FSL,
678' FWL
PDOP: 1.6
QTR/QTR: SW4/SW4
PROP LINE: 648' WEST
BOTTOM HOLE:
LATITUDE: N40.52929°
LONGITUDE: W104.79138°
FOOTAGE: 1980' FSL,
660' FWL

DALEY LAND SURVEYING, INC.

PARKER, CO. 80134

303 953 9841

MULTI-WELL PAD LOCATION DRAWING

RH FARMS I133-12D, 25D, 11D & 14D

SECTION 33, TOWNSHIP 7 NORTH, RANGE 66 WEST OF THE 6TH PRINCIPAL MERIDIAN

