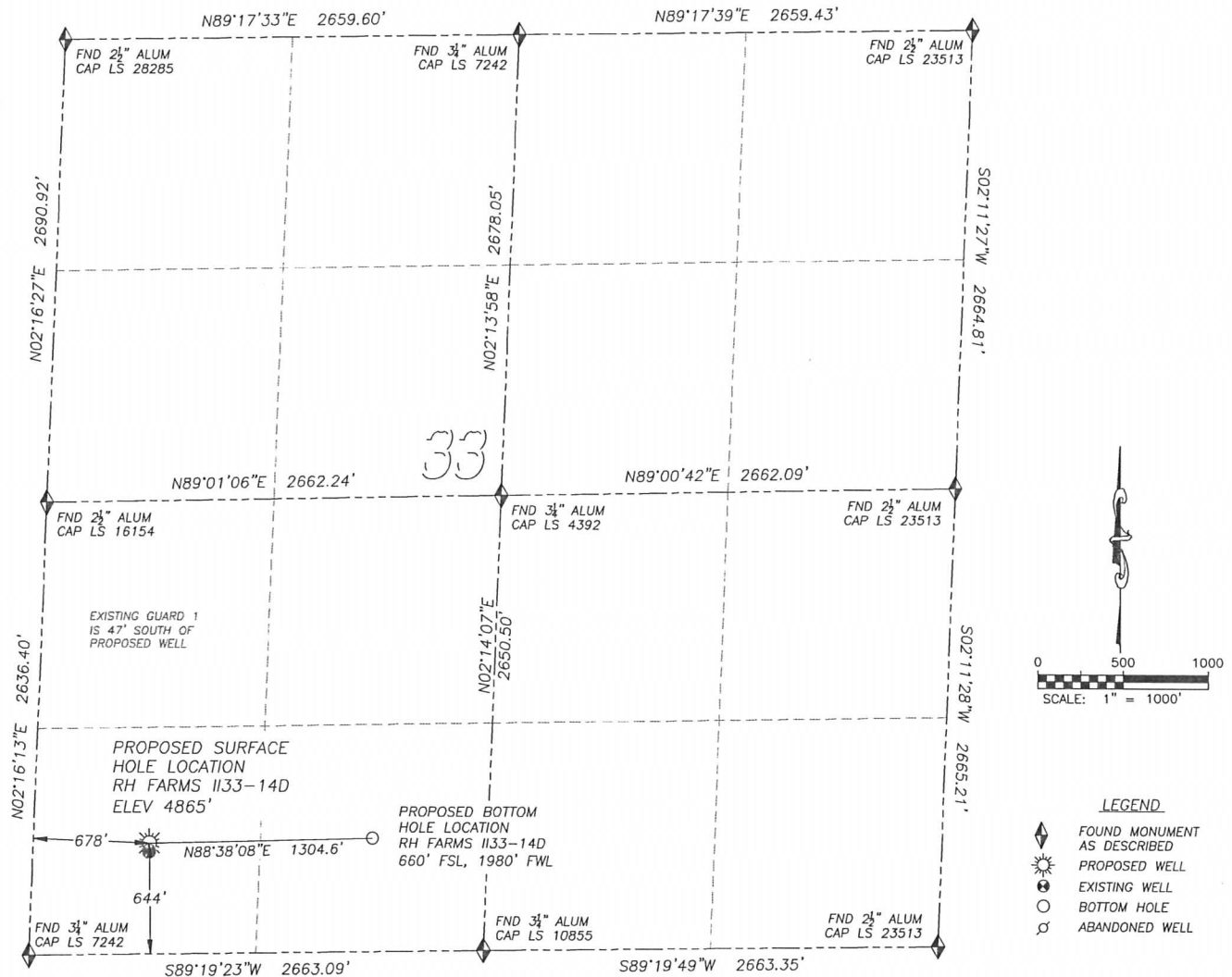


WELL LOCATION CERTIFICATE

RH FARMS II33-14D

SECTION 33, TOWNSHIP 7 NORTH, RANGE 66 WEST OF THE 6TH PRINCIPAL MERIDIAN

**NAD 83 LATITUDE AND LONGITUDE****RH FARMS II33-14D SURFACE HOLE:**

LATITUDE: N40.52562°
 LONGITUDE: W104.79151°
 ELEVATION: 4865'
 FOOTAGE: 644' FSL, 678' FWL
 PDOP: 2.2
 QTR/QTR: SW4/SW4
 PROP LINE: 614' SOUTH

BOTTOM HOLE:

LATITUDE: N40.52571°
 LONGITUDE: W104.78682°
 FOOTAGE: 660' FSL, 1980' FWL

NEAREST EXISTING WELL:

GUARD 1 SURFACE HOLE
 LATITUDE: N40.52549°
 LONGITUDE: W104.79151°
 ELEVATION: 4864'
 47' SOUTH

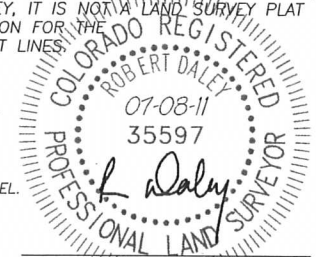
IN ACCORDANCE WITH A REQUEST FROM MIKE RODINE OF NOBLE ENERGY INC., DALEY LAND SURVEYING, INC. HAS DETERMINED THE SURFACE LOCATION OF THE RH FARMS II33-14D WELL TO BE 644' FSL, 678' FWL, AS MEASURED AT NINETY (90) DEGREES FROM THE SECTION LINES OF SECTION 33, TOWNSHIP 7 NORTH, RANGE 66 WEST OF THE 6TH PRINCIPAL MERIDIAN, WELD COUNTY, COLORADO. THE BOTTOM HOLE LOCATION, PROVIDED BY THE CLIENT, IS TO BE 660' FSL, 1980' FWL.

I HEREBY CERTIFY THAT THIS WELL LOCATION CERTIFICATE WAS PREPARED BY ME OR UNDER MY DIRECT SUPERVISION, THAT THE WORK WAS COMPLETED ON 7/06/2011 FOR AND ON BEHALF OF NOBLE ENERGY, INC., AND THAT THIS MAP DOES NOT REPRESENT A BOUNDARY SURVEY, IT IS NOT A LAND SURVEY PLAT OR AN IMPROVEMENT SURVEY PLAT AND IT IS NOT TO BE RELIED UPON FOR THE ESTABLISHMENT OF FENCE, BUILDING OR OTHER FUTURE IMPROVEMENT LINES.

NOTES:

- 1) BEARINGS FOR THIS MAP ARE ASSUMED AND BASED UPON GPS OBSERVATIONS MADE BETWEEN MONUMENTS LOCATED AT THE SOUTHWEST CORNER AND WEST QUARTER CORNER OF SECTION 33, T.7N., R.66W.
- 2) HORIZONTAL DATUM IS NAD83.
- 3) VERTICAL DATUM IS NAVD88. ELEVATIONS ARE DERIVED FROM GPS OBSERVATIONS PROCESSED THROUGH OPUS, UTILIZING THE GEOID09 MODEL.
- 4) SEE LOCATION DRAWING FOR VISIBLE IMPROVEMENTS WITHIN 600' OF PROPOSED SURFACE HOLE LOCATION.
- 5) SURFACE USE: AGRICULTURAL.

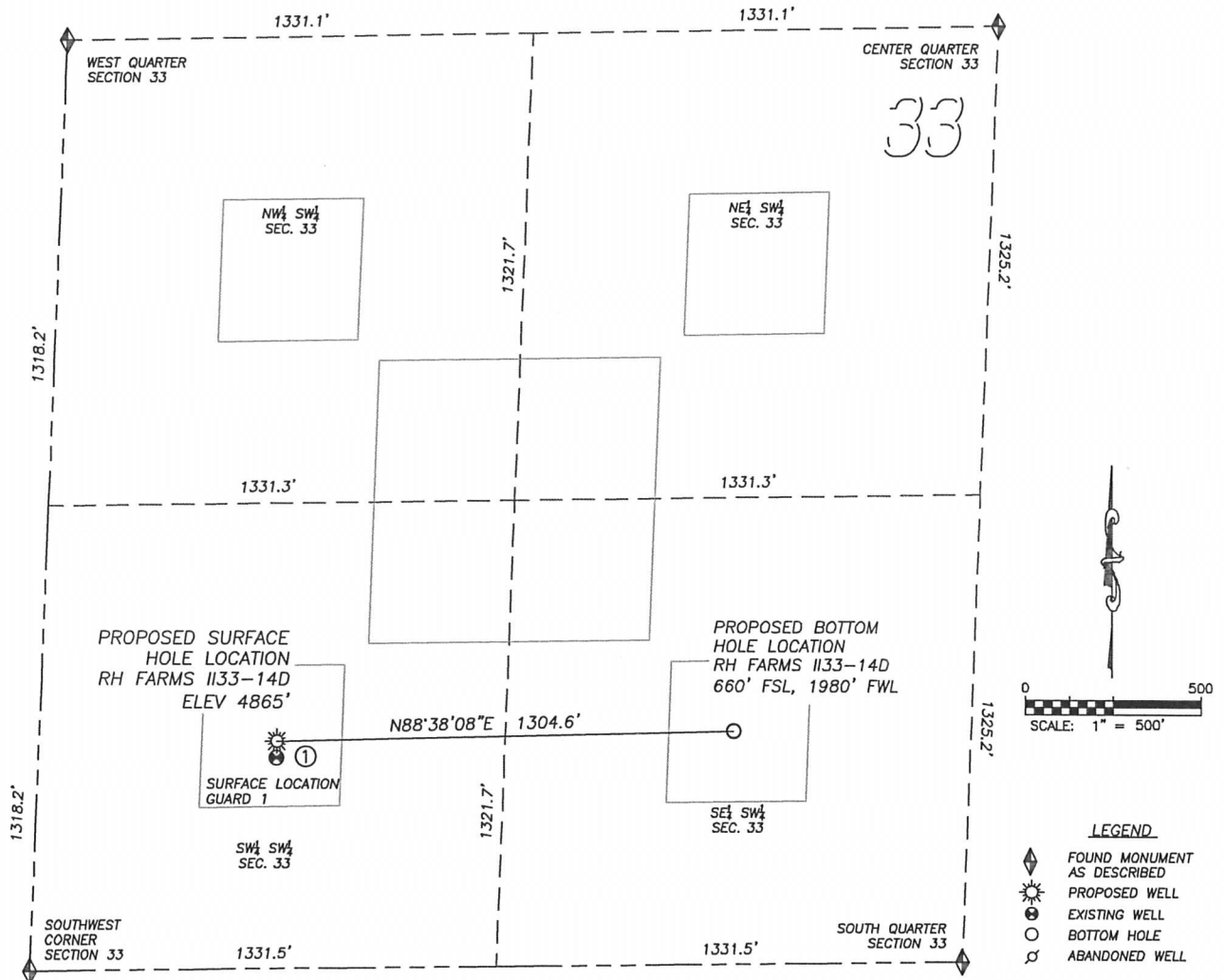
NOTICE: According to Colorado law you MUST commence any legal action based upon any defect in this W.L.C. within three years after you first discover such defect. In no event may any action based upon any such defect in this W.L.C. be commenced more than ten years from the date of the certification shown herein.



FOR AND ON BEHALF OF
DALEY LAND SURVEYING INC.,
Robert Daley, PLS 35597

SITE SKETCH RH FARMS

SECTION 33, TOWNSHIP 7 NORTH, RANGE 66 WEST OF THE 6TH PRINCIPAL MERIDIAN



①

GUARD 1
 SW/SW SEC. 33
 597' FSL, 679' FWL
 1308' W OF PROPOSED
 BOTTOM HOLE LOCATION
 LAT. N40.52549°
 LONG. W104.79151°
 EL: 4864'
 PDOP 2.0

NOTES:

- 1) THIS DOES NOT REPRESENT A BOUNDARY SURVEY
- 2) THE LATITUDES AND LONGITUDES SHOWN ARE REFERENCED TO NAD83
- 3) DATUM FOR ELEVATION IS NAVD88. ELEVATIONS ARE DERIVED FROM GPS-RTK OBSERVATIONS PROCESSED THROUGH OPUS, UTILIZING THE GEOID09 MODEL.

