

1625 Broadway
Suite 2000
Denver, CO 80202

Tel: 303.228.4000
Fax: 303.228.4280

www.nobleenergyinc.com



September 26, 2011

Colorado Oil and Gas Conservation Commission
The Chancery Building
1120 Lincoln Street, Suite 801
Denver, CO 80203
Attn: Mr. David Neslin, Director

RE: NOVACEK C28-27D
Codell/Niobrara New Drill
Township 4 North, Range 64 West, 6th P.M.
Section 21: SE/4SE/4: 566' FSL & 830' FEL (Surface Location)
Section 28: NW/4NE/4: 75' FNL & 1320' FEL (Bottom Hole Location)
Weld County, Colorado

Mr. Neslin:

Noble Energy, Inc. ("NEI") is planning to drill the captioned boundary well in accordance with the provisions of COGCC Rule 318A.e.

NEI's proposed wellbore spacing unit consists of the S/2SE of Section 21, N/2NE of Section 28, T4N, R64W, creating a 160-acre wellbore spacing unit. NEI is the only owner within the proposed wellbore spacing unit, therefore NEI hereby attests that no notice letters are required under COGCC Rule 318A.e.(6).

Enclosed are copies of the following documents to assist you in your review and approval of NEI's proposed APD for the captioned well:

- Plat illustrating the proposed wellbore spacing unit and number of Codell/Niobrara wells located within the existing 160-acre governmental quarter section(s) (NE/4) to be less than eight (8) in accordance with COGCC Rule 318A.f.
- Plat illustrating proposed wellbore spacing unit on existing location plat.

Thank you for your attention to the enclosed. NEI respectfully requests that the COGCC review the enclosed information and approve the Application for Permit to Drill the captioned well.

Sincerely,

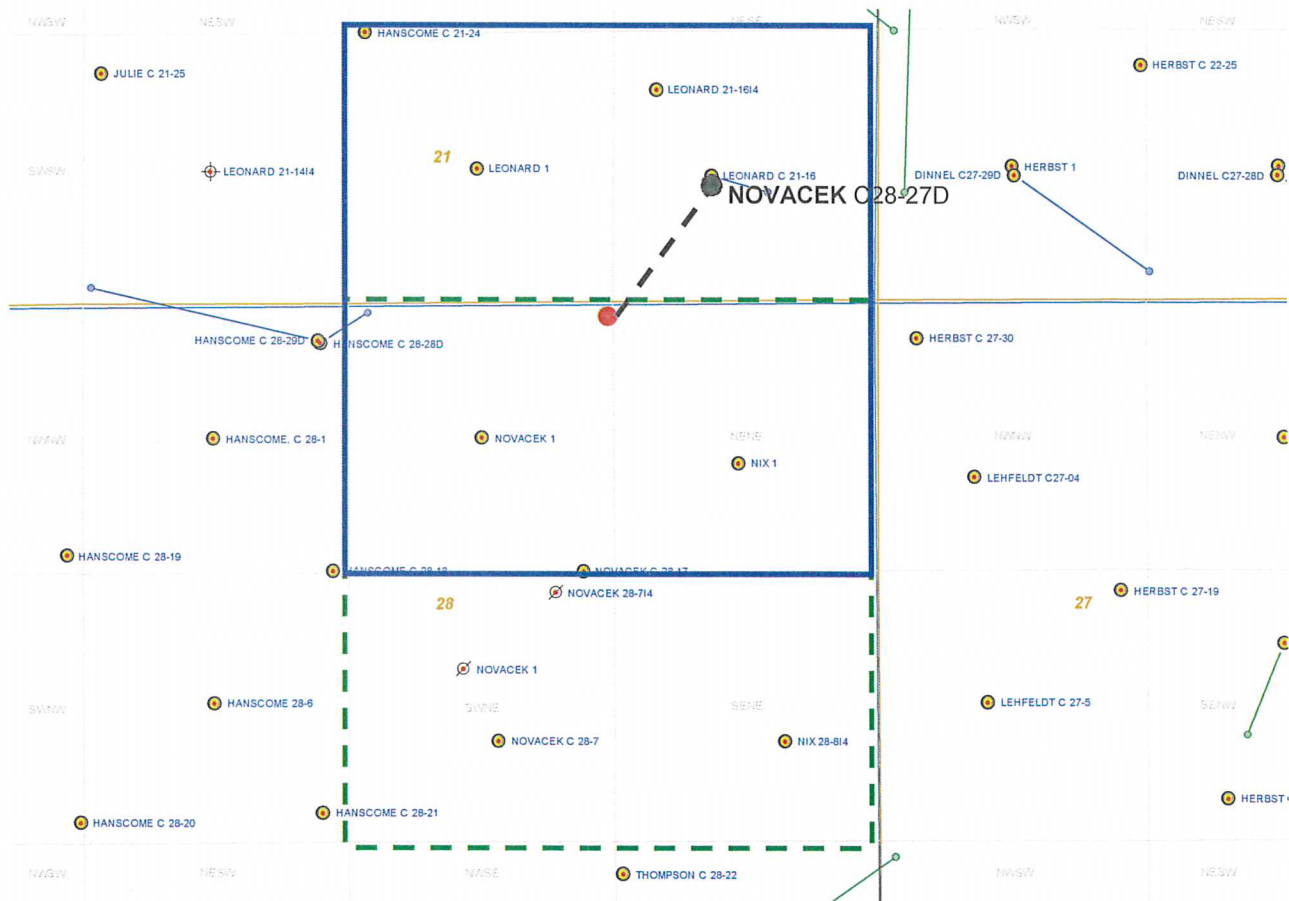
A handwritten signature in blue ink that reads 'Mari Clark'.

Mari Clark
Regulatory Analyst II
Noble Energy Inc.

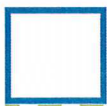
NOVACEK C28-27D

Noble Energy, Inc

NW/4NE/4 Section 28, Township 4 North, Range 64 West



Legend



Proposed 160 acre spacing unit



Bottom Hole Location



Bottom Hole Located NE/4, Sec. 28, T4N, R64W

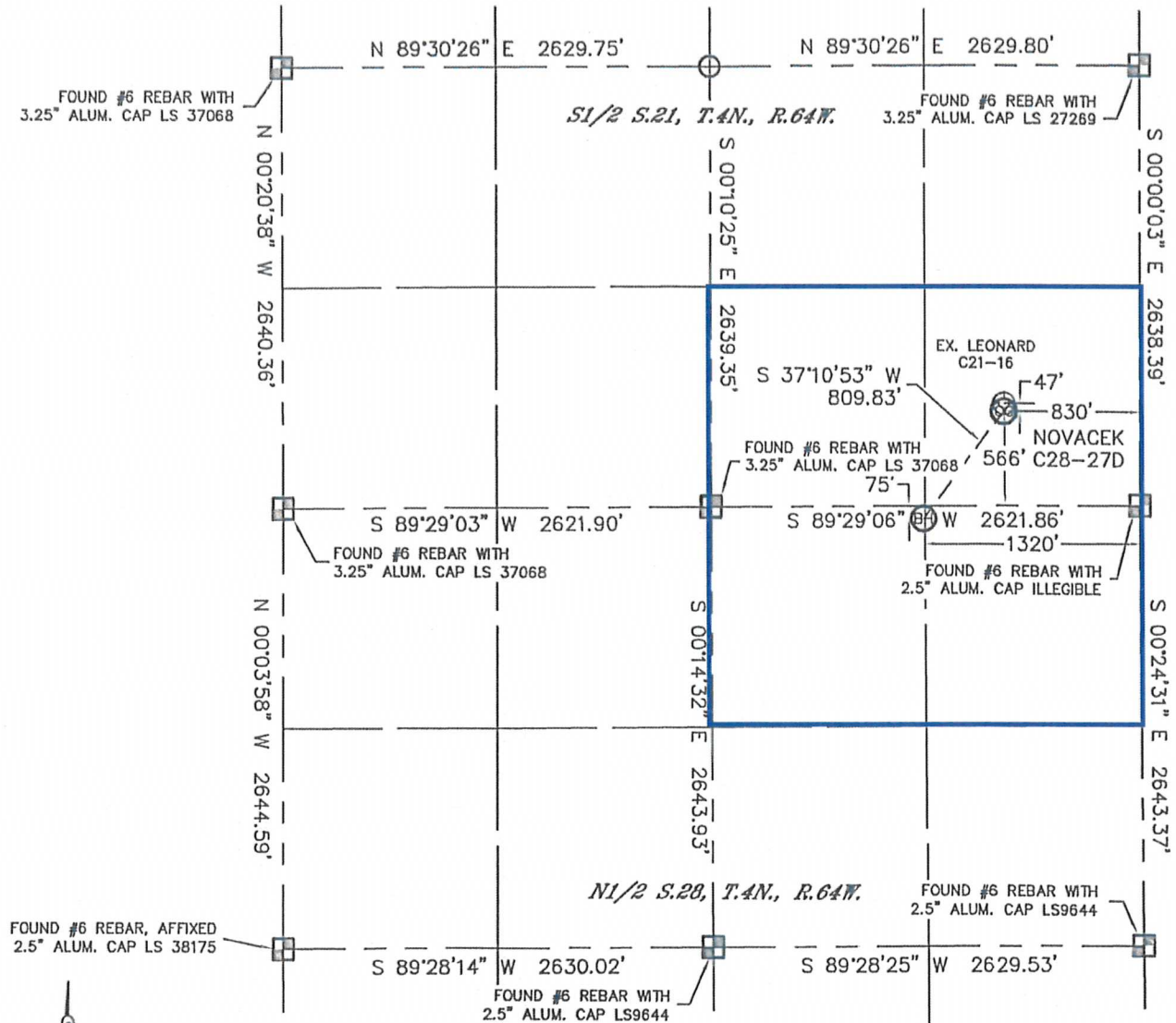
The governmental ¼ Section has less than 8 bottom hole wells producing from the Codell, Niobrara, and J-Sand formations.

Lat40°, Inc. 1635 Foxtrail Drive, Suite 325 Loveland, CO 970-776-3321

WELL LOCATION CERTIFICATE

SECTION: 21
TOWNSHIP: 4N
RANGE: 64W

THIS MAP DOES NOT REPRESENT A BOUNDARY SURVEY



In accordance with a request from Nate McCorkell with Noble Energy Inc.

Lat40°, Inc. has determined the surface location of the NOVACEK C28-27D to be 566' from the SOUTH line and 830' from the EAST line as measured at right angles from the section lines of Section 21, Township 4 North, Range 64 West and the bottom hole to be 75' from the NORTH line and 1320' from the EAST line as measured at right angles from the section lines of Section 28, Township 4 North, Range 64 West of the Sixth Principal Meridian, County of Weld, State of Colorado.

I hereby state that this Well Location Certificate was prepared by me, or under my direct supervision, that the fieldwork was completed on 6/17/11, for and on behalf of Noble Energy Inc.. That this is not a Land Survey Plat or an Improvement Survey Plat, and that it is not to be relied upon for establishment of fence, building, or other future improvement lines.

NOTE:

- 1) Bearings shown are Grid Bearings of the Colorado State Plane Coordinate System, North Zone, North American Datum 1983/2007. The lineal dimensions as contained herein are based upon the "U.S. Survey Foot."
- 2) Ground elevations are based on an observed GPS elevation (NAVD 1988 DATUM).
- 3) NEAREST EXISTING WELL: LEONARD C21-16, 47'
- 4) IMPROVEMENTS: See LOCATION DRAWING for all visible improvements within 400' of disturbed area.
- 5) SURFACE USE: CROP LAND, EX. WELL SITE
- 6) INSTRUMENT OPERATOR: ADAM KELLY

NOTE

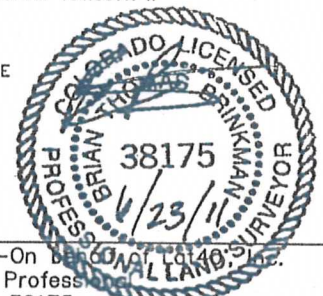
According to Colorado law, you must commence any legal action based upon any defect in this W.L.C. within three years after you discover such defect. In no event, may any action based upon any defect in this survey be commenced more than ten years after the date of the certificate shown hereon. (13-80-105 C.R.S.)

LEGEND

- = ALIQUOT MONUMENT AS DESCRIBED
- = CALCULATED POSITION

SURFACE LOCATION
LATITUDE: 40.29223°N
LONGITUDE: 104.54939°W
PDOP: 1.8
ELEV: 4710'
1/4,1/4: SE1/4SE1/4
NEAREST PROPERTY LINE: ±195' NE

BOTTOM HOLE
LATITUDE: 40.29047°N
LONGITUDE: 104.55117°W



Brian T. Brinkman—On behalf of Lat40°, Inc.
Colorado Licensed Professional Land Surveyor No. 38175

PROJECT#: 2011153