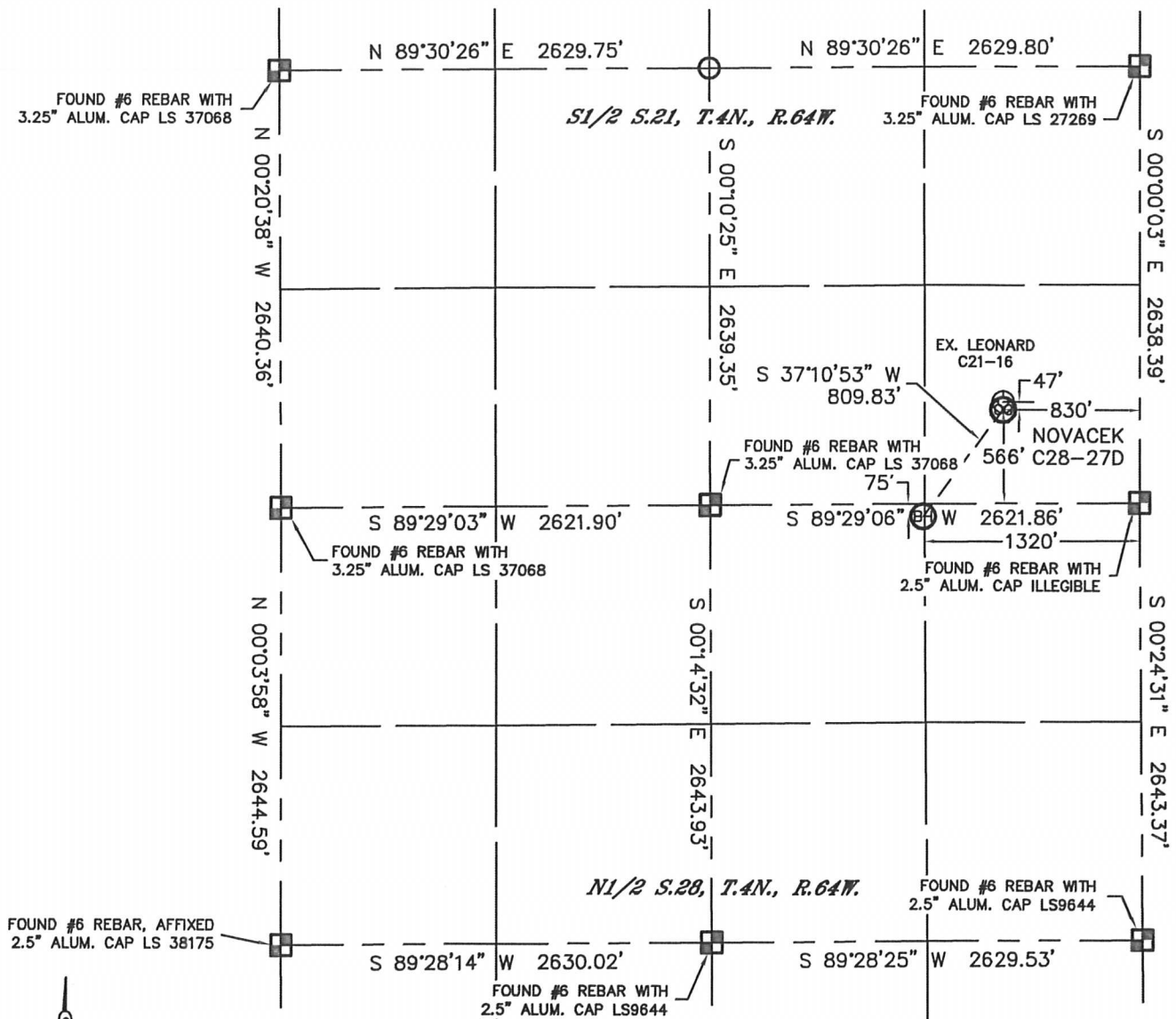


WELL LOCATION CERTIFICATE

THIS MAP DOES NOT REPRESENT A BOUNDARY SURVEY

SECTION: 21
TOWNSHIP: 4N
RANGE: 64W



In accordance with a request from Nate McCorkell with Noble Energy Inc. Lat40°, Inc. has determined the surface location of the NOVACEK C28-27D to be 566' from the SOUTH line and 830' from the EAST line as measured at right angles from the section lines of Section 21, Township 4 North, Range 64 West and the bottom hole to be 75' from the NORTH line and 1320' from the EAST line as measured at right angles from the section lines of Section 28, Township 4 North, Range 64 West of the Sixth Principal Meridian, County of Weld, State of Colorado.

I hereby state that this Well Location Certificate was prepared by me, or under my direct supervision, that the fieldwork was completed on 6/17/11, for and on behalf of Noble Energy Inc. That this is not a Land Survey Plat or an Improvement Survey Plat, and that it is not to be relied upon for establishment of fence, building, or other future improvement lines.

NOTE:

- 1) Bearings shown are Grid Bearings of the Colorado State Plane Coordinate System, North Zone, North American Datum 1983/2007. The lineal dimensions as contained herein are based upon the "U.S. Survey Foot."
- 2) Ground elevations are based on an observed GPS elevation (NAVD 1988 DATUM).
- 3) NEAREST EXISTING WELL: LEONARD C21-16, 47'
- 4) IMPROVEMENTS: See LOCATION DRAWING for all visible improvements within 400' of disturbed area.
- 5) SURFACE USE: CROP LAND, EX. WELL SITE
- 6) INSTRUMENT OPERATOR: ADAM KELLY

SURFACE LOCATION
LATITUDE: 40.29223°N
LONGITUDE: 104.54939°W
PDOP: 1.8
ELEV: 4710'
1/4,1/4: SE1/4SE1/4
NEAREST PROPERTY LINE: ±195' NE

BOTTOM HOLE
LATITUDE: 40.29047°N
LONGITUDE: 104.55117°W

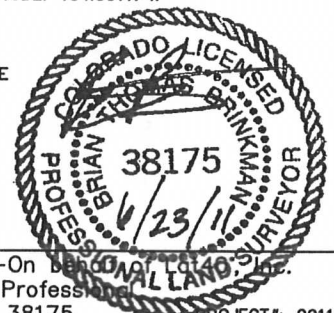
NOTE

According to Colorado law, you must commence any legal action based upon any defect in this W.L.C. within three years after you discover such defect. In no event, may any action based upon any defect in this survey be commenced more than ten years after the date of the certificate shown hereon. (13-80-105 C.R.S.)

LEGEND

- = ALIQUOT MONUMENT AS DESCRIBED
- = CALCULATED POSITION

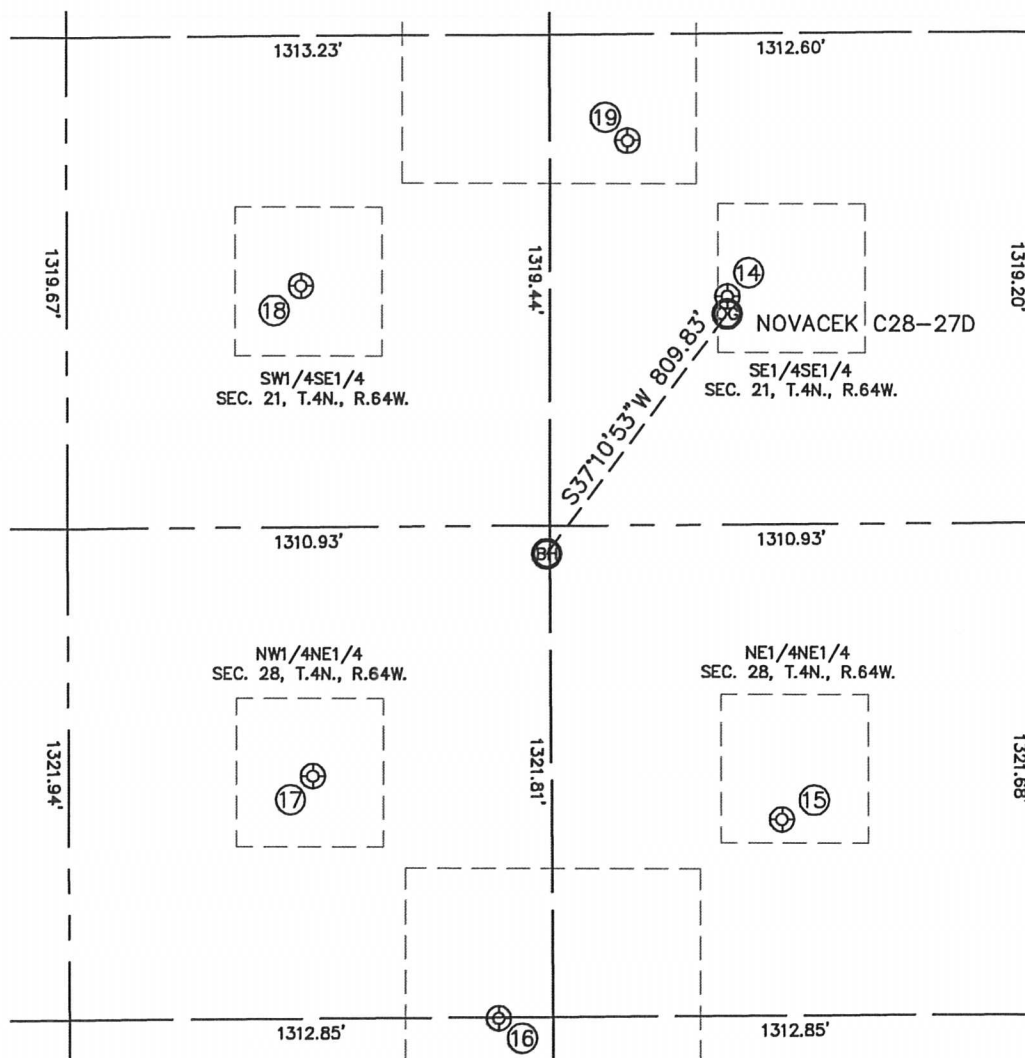
Brian T. Brinkman—On behalf of Lat40°, Inc.
Colorado Licensed Professional Land Surveyor No. 38175



PROJECT#: 2011153

SITE SKETCH NOVACEK C28-27D

SECTION: 21
TOWNSHIP: 4N
RANGE: 64W



⑭
LEONARD C21-16
SE1/4SE1/4
613' FSL
830' FEL
LAT-40.29236°N
LONG-104.54939°W
PDOP: 1.8
ELEV: 4709'

⑮
NIX 1
NE1/4NE1/4
794' FNL
688' FEL
LAT-40.28849°N
LONG-104.54891°W
PDOP: 1.5
ELEV: 4896'

⑯
NOVACEK C28-17
SW1/4NE1/4
1324' FNL
1460' FEL
LAT-40.28704°N
LONG-104.55169°W
PDOP: 1.9
ELEV: 4713'

⑰
NOVACEK 1
NW1/4NE1/4
670' FNL
1960' FEL
LAT-40.28884°N
LONG-104.55347°W
PDOP: 2.8
ELEV: 4721'

⑱
LEONARD 1
SW1/4SE1/4
648' FSL
1988' FEL
LAT-40.29246°N
LONG-104.55354°W
PDOP: 2.0
ELEV: 4715'

⑲
LEONARD 21-1614
SE1/4SE1/4
1033' FSL
1101' FEL
LAT-40.29351°N
LONG-104.55034°W
PDOP: 2.9
ELEV: 4709'

