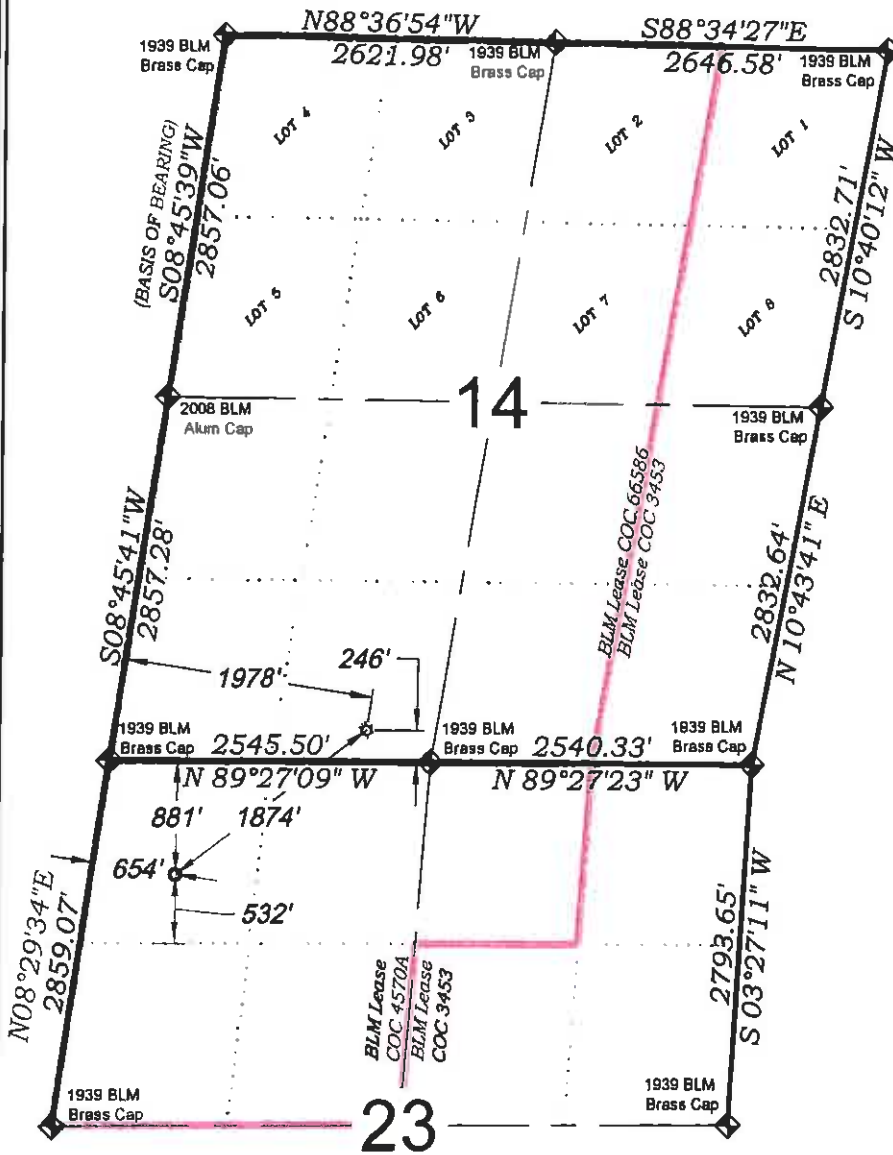


Federal RG 411-23-298



Surface Location

246 FSL

1978 FSL

NAD 83

LATITUDE

39.870303°

LONGITUDE

-108.363189°

NORTHING

1754555.1

EASTING

2196436.9

Bottom Location

881 FNL

654 FSL

NAD 83

LATITUDE

39.867119°

LONGITUDE

-108.368433°

NORTHING

1753442.2

EASTING

2194929.0

PROPOSED PAD ELEV.: 6685.7
EXISTING GROUND ELEV.: 6685.7

SEE CONSTRUCTION LAYOUT
PLAT FOR VISIBLE IMPROVEMENTS
WITHIN 400' OF THIS LOCATION

SURVEYORS STATEMENT

I, MICHAEL J. LANGHORNE, A REGISTERED LAND SURVEYOR IN THE STATE OF COLORADO DO HEREBY CERTIFY THAT THE SURVEY SHOWN HEREON WAS PREPARED UNDER MY DIRECT SUPERVISION AND HAS BEEN STAKED ON THE GROUND AS SHOWN ON THE PLAT AND CHECKING THAT THIS MAP IS A TRUE REPRESENTATION THEREOF.

MICHAEL J. LANGHORNE, COLORADO REGISTRATION NO. 36572
FOR AND ON BEHALF OF
BOOKCLIFF SURVEY SERVICES, INC.

REFERENCES

- 1) CORRECTIVE DEPENDENT RESURVEY T. 2 S., R. 98 W., 6 th P.M. (GLO PLAT)
- 2) U.S.G.S. QUAD. Rock School and Square S Ranch, CO

REVISED: 6/20/11

SURVEY DATE: 3/23/10
MAP DATE: 6/2/10
SCALE: 1" = 1500'
PLAT: 1 of 1
PROJECT: Williams Highland

- LEGEND -

FIELD LOCATED SECTION
MONUMENTS AS DESCRIBED



FIELD SURVEYED
WELL LOCATION



CALCULATED BOTTOM
HOLE LOCATION



CALCULATED SECTION
CORNER LOCATION



NOTES

- 1) ELEVATIONS BASED ON N.A.V.D. 1988 PUBLISHED COORDINATES.
- 2) LATITUDES AND LONGITUDES ARE BASE ON NAD 83, PUBLISHED COORDINATES.
- 3) STATE PLANE COORDINATES ARE BASED ON COLORADO CENTRAL ZONE, U.S. SURVEY FEET.
- 4) ELEVATION MASK SET TO 15"
- 5) GPS OPERATOR J. KIRKPATRICK, OBSERVED A PDOP OF 1.8 FOR SURVEY POINT NUMBER 30509.
- 6) SURFACE AND BOTTOM HOLE LOCATIONS ARE MEASURED 90° FROM SECTION LINES.

WELL LOCATION PLAT Prepared for:

Williams. Williams Production, RMT

SE1/4 SW1/4, SECTION 14
T. 2 S., R. 98 W. of the 6th P.M.
Rio BLANCO COUNTY, COLORADO