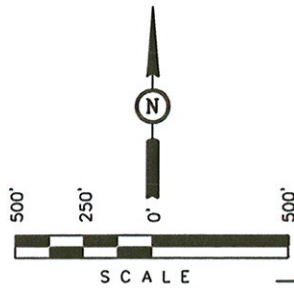
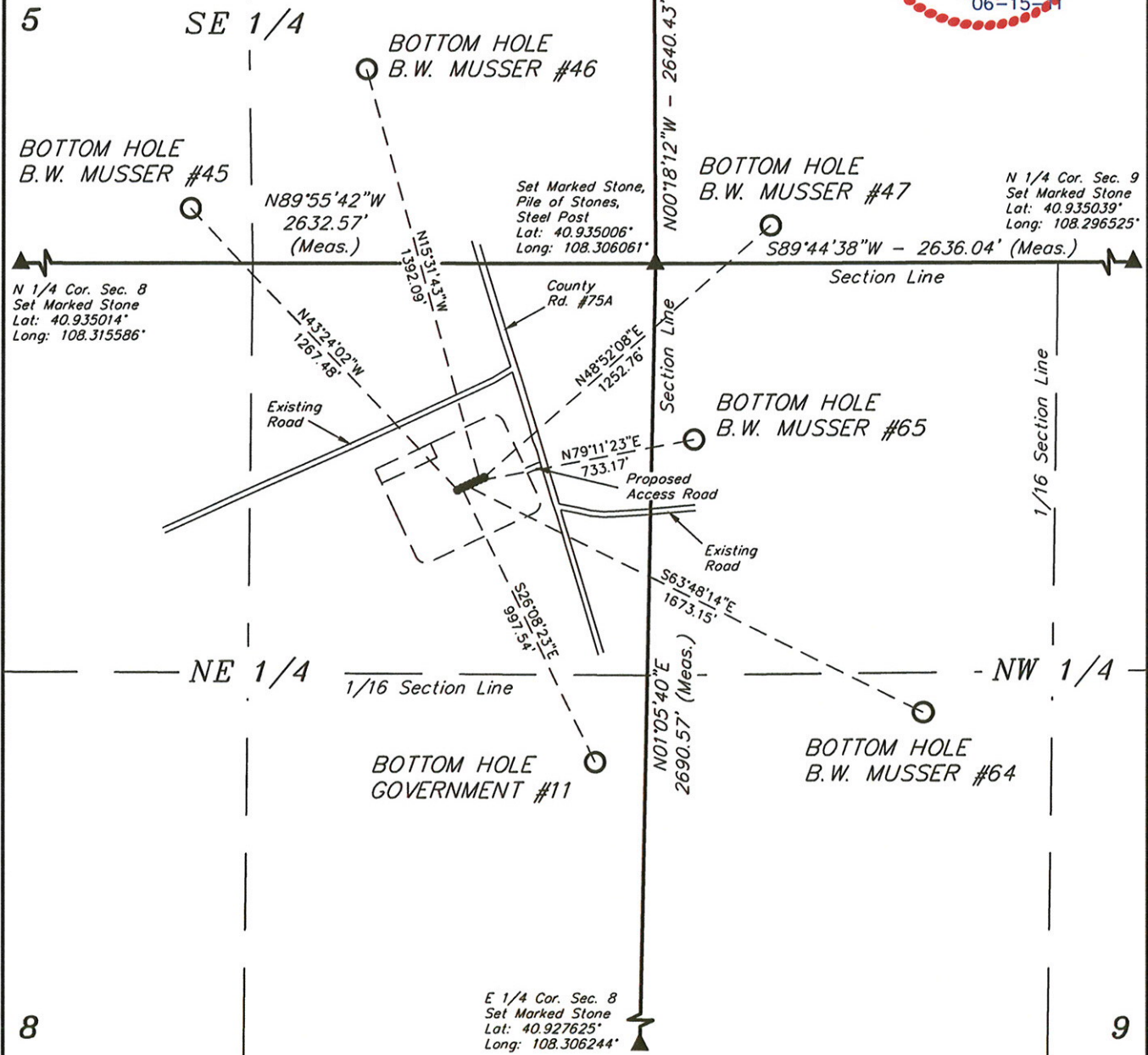


FIGURE #6

B.W. MUSSER #45, #46, #47, #64, #65,
GOVERNMENT #4 & #11
SECTION 8, T11N, R97W, 6th P.M.
NE 1/4 NE 1/4



DATE: 09-15-10
DRAWN BY: C.C.
REVISED: 01-31-11 S.L.
REVISED: 03-07-11 S.L.
REVISED: 04-09-11 S.L.
REVISED: 05-25-11 S.L.



UTAH ENGINEERING & LAND SURVEYING
 85 So. 200 East • Vernal, Utah 84078 • (435) 789-1017