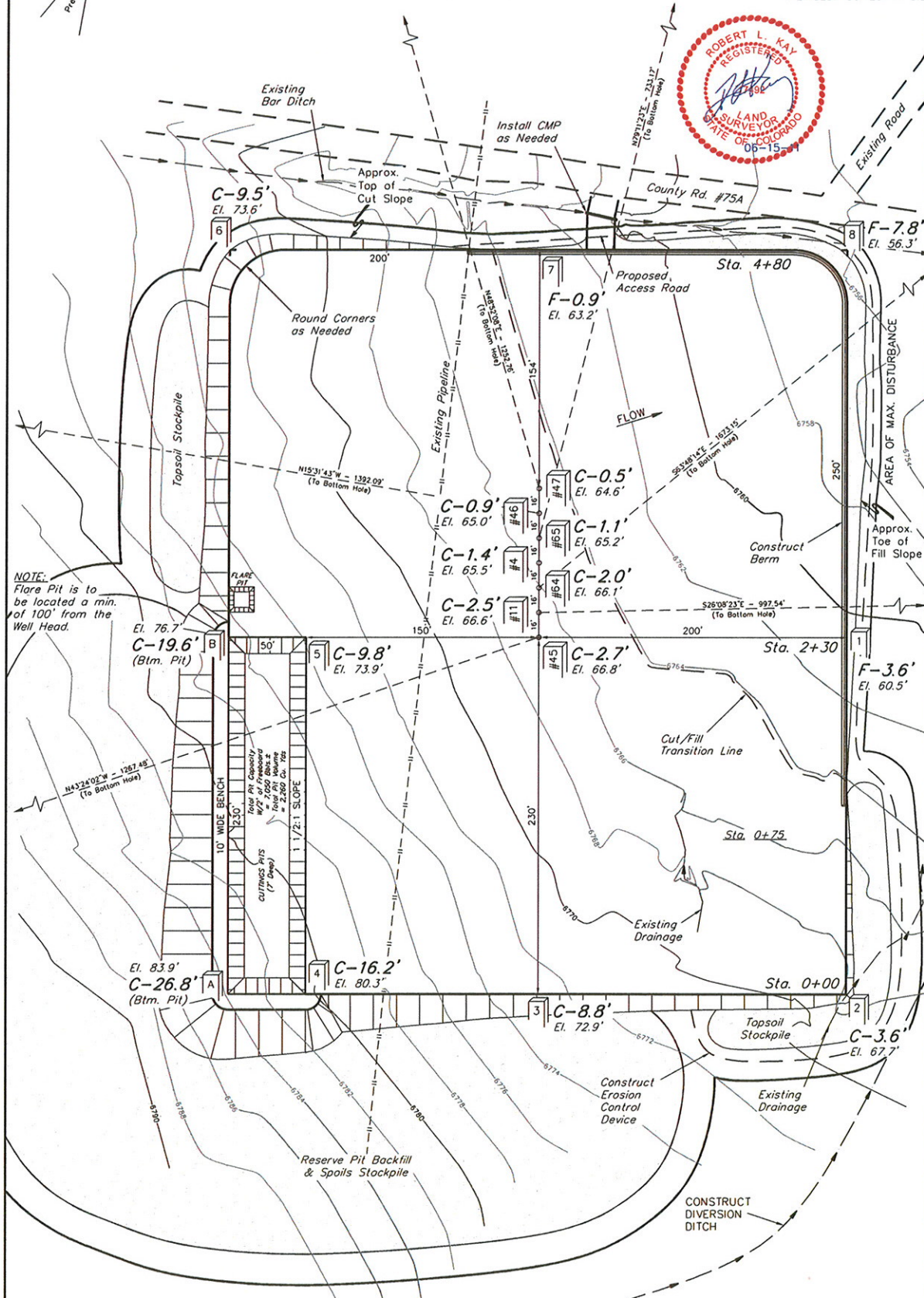
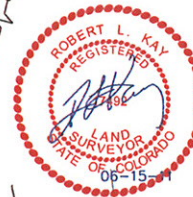


WEXPRO COMPANY
CONSTRUCTION LAYOUT FOR
B.W. MUSSER #45, #46, #47, #64, #65,
GOVERNMENT #4 & #11
SECTION 8, T11N, R97W, 6th P.M.
NE 1/4 NE 1/4

FIGURE #1

SCALE: 1" = 50'
DATE: 09-07-10
DRAWN BY: C.C.
REVISED: 01-31-11 S.L.
REVISED: 03-07-11 S.L.
REVISED: 04-09-11 S.L.
REVISED: 05-25-11 S.L.



Elev. Ungraded Ground At #45 Loc. Stake = 6766.8'
FINISHED GRADE ELEV. AT #45 LOC. STAKE = 6764.1'

UINTAH ENGINEERING & LAND SURVEYING
85 So. 200 East • Vernal, Utah 84078 • (435) 789-1017