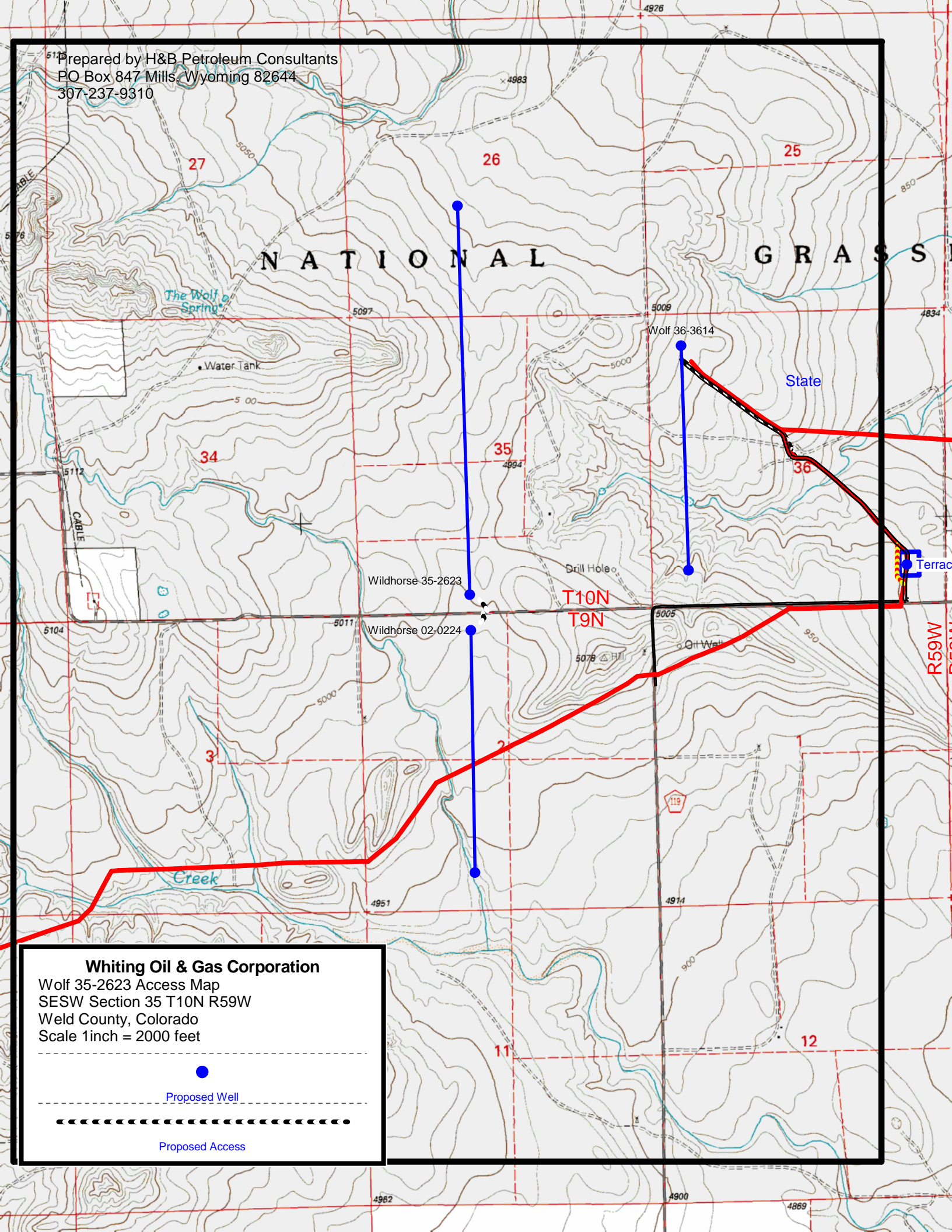


Prepared by H&B Petroleum Consultants
PO Box 847 Mills, Wyoming 82644
307-237-9310



Whiting Oil & Gas Corporation

Wolf 35-2623 Access Map
SESW Section 35 T10N R59W
Weld County, Colorado
Scale 1 inch = 2000 feet

Proposed Well

Proposed Access