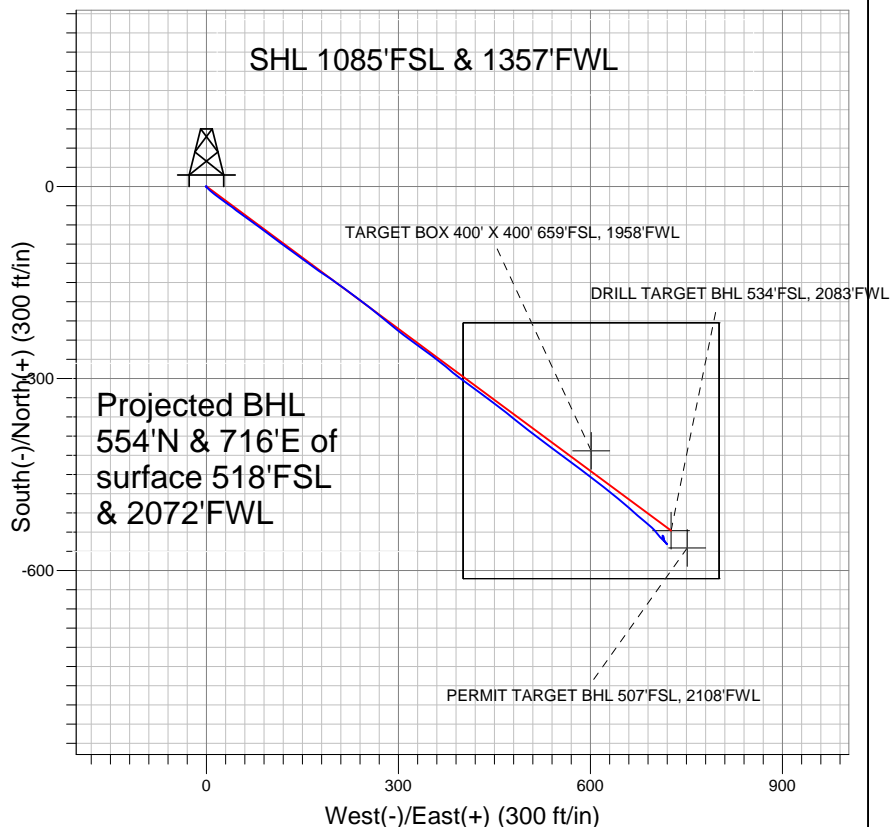


## Synergy Resources

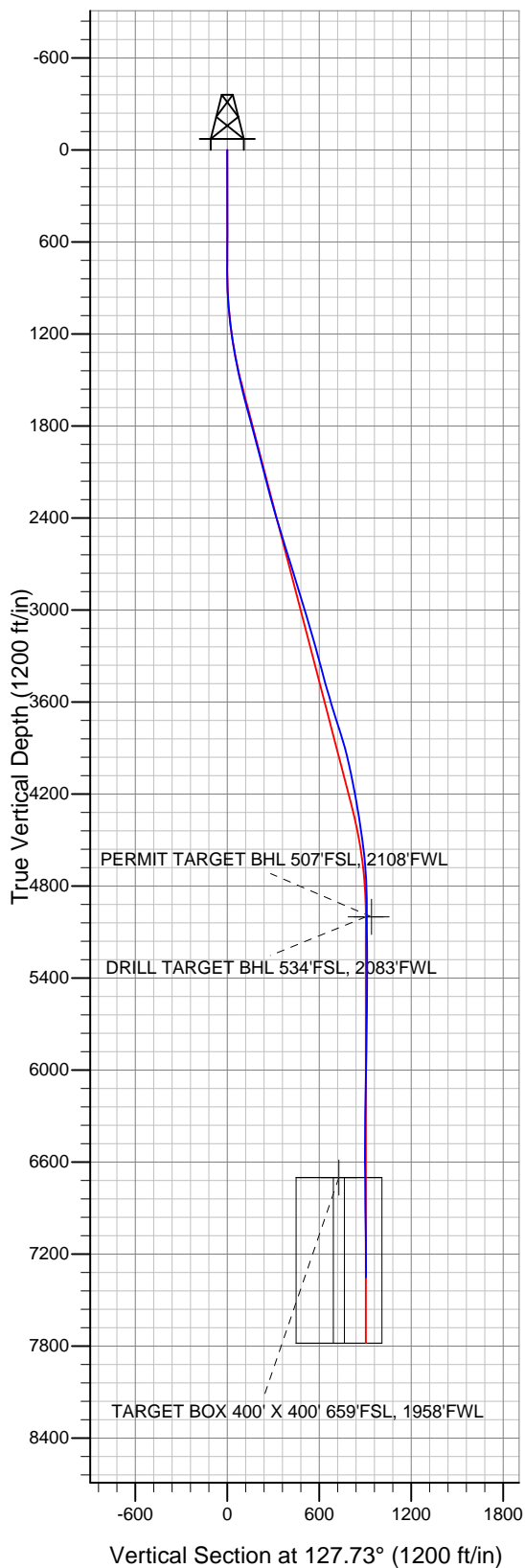


### LEGEND

- △ RBF 24-15D, Wellbore #1, Plan #3 (8-31-10) V0
- Wellbore #1

## Final Survey Plot

Projected Final Survey -  
7466'MD & 7351'TVD @ 905' VS  
0.6 deg Inc 163.6 deg AZ



Project: SEC.15-T6N-R67W  
Site: RBF 24-15D Pad Sec.15-T6N-R67W  
Well: RBF 24-15D  
Plan: Wellbore #1



## **Directional**

### **Synergy Resources**

**SEC.15-T6N-R67W**

**RBF 24-15D Pad Sec.15-T6N-R67W**

**RBF 24-15D**

**Wellbore #1**

**Design: Wellbore #1**

### **Standard Survey Report**

**03 December, 2010**

<b>Company:</b>	Synergy Resources	<b>Local Co-ordinate Reference:</b>	Well RBF 24-15D
<b>Project:</b>	SEC.15-T6N-R67W	<b>TVD Reference:</b>	WELL @ 4793.0ft (Original Well Elev)
<b>Site:</b>	RBF 24-15D Pad Sec.15-T6N-R67W	<b>MD Reference:</b>	WELL @ 4793.0ft (Original Well Elev)
<b>Well:</b>	RBF 24-15D	<b>North Reference:</b>	True
<b>Wellbore:</b>	Wellbore #1	<b>Survey Calculation Method:</b>	Minimum Curvature
<b>Design:</b>	Wellbore #1	<b>Database:</b>	Landmark

<b>Project</b>	SEC.15-T6N-R67W, Weld County, Colorado		
<b>Map System:</b>	US State Plane 1983	<b>System Datum:</b>	Mean Sea Level
<b>Geo Datum:</b>	North American Datum 1983		Using Well Reference Point
<b>Map Zone:</b>	Colorado Northern Zone		Using geodetic scale factor

Site		RBF 24-15D Pad Sec.15-T6N-R67W			
Site Position:		Northing:		1,419,255.21 ft	
From:	Lat/Long	Easting:		Longitude:	
		3,171,309.35 ft		40° 28' 57.446 N	
Position Uncertainty:		Slot Radius:		104° 53' 2.951 W	
0.0 ft		"		Grid Convergence: 0.40 °	

Well	RBF 24-15D					
Well Position	+N/-S	0.0 ft	Northing:	1,419,255.20 ft	Latitude:	40° 28' 57.446 N
	+E/-W	0.0 ft	Easting:	3,171,309.35 ft	Longitude:	104° 53' 2.951 W
Position Uncertainty		0.0 ft	Wellhead Elevation:	ft	Ground Level:	4,780.0 ft

Wellbore	Wellbore #1				
Magnetics	Model Name	Sample Date	Declination (°)	Dip Angle (°)	Field Strength (nT)
	IGRF2010	11/18/2010	9.01	67.12	53,223

Design	Wellbore #1				
Audit Notes:					
Version:	1.0	Phase:	ACTUAL	Tie On Depth:	0.0
Vertical Section:	Depth From (TVD) (ft)	+N/-S (ft)	+E/-W (ft)	Direction (°)	
	0.0	0.0	0.0	127.73	

Survey Program		Date	12/3/2010		
From (ft)	To (ft)	Survey (Wellbore)	Tool Name	Description	
551.0	7,466.0	Survey #1 (Wellbore #1)	MWD	MWD - Standard	

Survey	Survey Data									
	Measured Depth (ft)	Inclination (°)	Azimuth (°)	Vertical Depth (ft)	+N/-S (ft)	+E/-W (ft)	Vertical Section (ft)	Dogleg Rate (°/100ft)	Build Rate (°/100ft)	Turn Rate (°/100ft)
	0.0	0.00	0.00	0.0	0.0	0.0	0.0	0.00	0.00	0.00
	551.0	0.10	49.40	551.0	0.3	0.4	0.1	0.02	0.02	0.00
	647.0	0.50	265.70	647.0	0.3	0.0	-0.2	0.61	0.42	-149.69
	741.0	0.40	268.00	741.0	0.3	-0.7	-0.8	0.11	-0.11	2.45
	834.0	0.90	150.70	834.0	-0.4	-0.7	-0.3	1.23	0.54	-126.13
	928.0	2.50	132.90	927.9	-2.4	1.2	2.4	1.77	1.70	-18.94
	1,022.0	4.40	128.60	1,021.8	-6.0	5.5	8.0	2.04	2.02	-4.57
	1,116.0	7.10	129.10	1,115.3	-12.0	12.8	17.5	2.87	2.87	0.53
	1,209.0	8.00	126.80	1,207.5	-19.5	22.5	29.7	1.02	0.97	-2.47
	1,303.0	9.40	125.90	1,300.4	-27.9	33.9	43.9	1.50	1.49	-0.96
	1,396.0	10.80	127.00	1,392.0	-37.6	47.0	60.2	1.52	1.51	1.18
	1,490.0	12.40	125.70	1,484.0	-48.8	62.3	79.1	1.72	1.70	-1.38
	1,583.0	13.80	126.30	1,574.6	-61.2	79.3	100.1	1.51	1.51	0.65

<b>Company:</b>	Synergy Resources	<b>Local Co-ordinate Reference:</b>	Well RBF 24-15D
<b>Project:</b>	SEC.15-T6N-R67W	<b>TVD Reference:</b>	WELL @ 4793.0ft (Original Well Elev)
<b>Site:</b>	RBF 24-15D Pad Sec.15-T6N-R67W	<b>MD Reference:</b>	WELL @ 4793.0ft (Original Well Elev)
<b>Well:</b>	RBF 24-15D	<b>North Reference:</b>	True
<b>Wellbore:</b>	Wellbore #1	<b>Survey Calculation Method:</b>	Minimum Curvature
<b>Design:</b>	Wellbore #1	<b>Database:</b>	Landmark

Survey										
Measured Depth (ft)	Inclination (°)	Azimuth (°)	Vertical Depth (ft)	+N/-S (ft)	+E/-W (ft)	Vertical Section (ft)	Dogleg Rate (°/100ft)	Build Rate (°/100ft)	Turn Rate (°/100ft)	
1,677.0	15.10	126.90	1,665.6	-75.1	98.1	123.6	1.39	1.38	0.64	
1,771.0	15.00	125.60	1,756.4	-89.6	117.8	148.0	0.37	-0.11	-1.38	
1,864.0	14.50	126.90	1,846.3	-103.6	136.9	171.7	0.64	-0.54	1.40	
1,958.0	15.30	126.10	1,937.2	-117.9	156.3	195.8	0.88	0.85	-0.85	
2,052.0	14.50	124.80	2,028.0	-132.0	176.0	220.0	0.92	-0.85	-1.38	
2,146.0	13.80	124.20	2,119.2	-145.0	195.0	242.9	0.76	-0.74	-0.64	
2,240.0	15.30	126.20	2,210.2	-158.6	214.2	266.5	1.68	1.60	2.13	
2,334.0	16.10	126.70	2,300.6	-173.7	234.7	291.9	0.86	0.85	0.53	
2,427.0	16.30	128.00	2,390.0	-189.5	255.3	317.9	0.45	0.22	1.40	
2,521.0	17.00	129.80	2,480.0	-206.4	276.3	344.8	0.92	0.74	1.91	
2,615.0	16.70	128.30	2,570.0	-223.6	297.4	372.0	0.56	-0.32	-1.60	
2,708.0	17.20	127.30	2,658.9	-240.2	318.9	399.2	0.62	0.54	-1.08	
2,802.0	17.90	125.00	2,748.6	-256.9	341.8	427.5	1.05	0.74	-2.45	
2,896.0	17.80	129.10	2,838.0	-274.2	364.7	456.3	1.34	-0.11	4.36	
2,989.0	16.00	128.90	2,927.0	-291.2	385.7	483.3	1.94	-1.94	-0.22	
3,083.0	16.60	126.00	3,017.2	-307.3	406.7	509.7	1.08	0.64	-3.09	
3,177.0	16.20	125.70	3,107.4	-322.8	428.2	536.2	0.43	-0.43	-0.32	
3,270.0	16.20	127.60	3,196.7	-338.3	449.0	562.1	0.57	0.00	2.04	
3,364.0	15.10	128.10	3,287.2	-353.9	469.0	587.5	1.18	-1.17	0.53	
3,458.0	15.60	128.40	3,377.9	-369.3	488.6	612.4	0.54	0.53	0.32	
3,552.0	14.90	129.10	3,468.6	-384.7	507.9	637.1	0.77	-0.74	0.74	
3,646.0	16.40	126.50	3,559.1	-400.3	527.9	662.5	1.76	1.60	-2.77	
3,740.0	17.20	125.30	3,649.1	-416.2	549.9	689.6	0.93	0.85	-1.28	
3,833.0	17.70	126.00	3,737.8	-432.4	572.6	717.5	0.58	0.54	0.75	
3,927.0	17.50	128.30	3,827.4	-449.6	595.2	745.9	0.77	-0.21	2.45	
4,021.0	14.80	129.30	3,917.7	-466.0	615.6	772.0	2.89	-2.87	1.06	
4,114.0	12.20	127.60	4,008.1	-479.5	632.6	793.7	2.83	-2.80	-1.83	
4,208.0	11.50	130.10	4,100.1	-491.6	647.6	813.0	0.92	-0.74	2.66	
4,302.0	10.50	131.20	4,192.4	-503.3	661.3	830.9	1.09	-1.06	1.17	
4,396.0	9.80	131.20	4,284.9	-514.2	673.7	847.5	0.74	-0.74	0.00	
4,489.0	9.20	128.40	4,376.6	-524.0	685.5	862.8	0.81	-0.65	-3.01	
4,583.0	8.00	133.80	4,469.6	-533.2	696.1	876.8	1.54	-1.28	5.74	
4,676.0	7.10	141.80	4,561.8	-542.2	704.3	888.8	1.49	-0.97	8.60	
4,771.0	5.00	136.20	4,656.2	-549.8	710.8	898.6	2.29	-2.21	-5.89	
4,865.0	2.80	130.60	4,750.0	-554.2	715.4	905.0	2.37	-2.34	-5.96	
4,959.0	0.80	142.00	4,844.0	-556.3	717.6	907.9	2.15	-2.13	12.13	
5,114.9	0.55	141.92	4,999.9	-557.7	718.7	909.7	0.16	-0.16	-0.05	
DRILL TARGET BHL 534'FSL, 2083'FWL										
5,115.3	0.55	141.92	5,000.3	-557.7	718.7	909.7	0.16	-0.16	-0.07	
PERMIT TARGET BHL 507'FSL, 2108'FWL										
5,146.0	0.50	141.90	5,030.9	-557.9	718.9	910.0	0.16	-0.16	-0.08	
5,334.0	0.40	152.00	5,218.9	-559.1	719.7	911.4	0.07	-0.05	5.37	
5,521.0	0.30	345.70	5,405.9	-559.3	719.9	911.6	0.37	-0.05	-88.93	
5,709.0	0.60	327.50	5,593.9	-557.9	719.2	910.3	0.17	0.16	-9.68	
5,897.0	0.80	316.00	5,781.9	-556.2	717.8	908.0	0.13	0.11	-6.12	
6,084.0	0.70	311.70	5,968.9	-554.5	716.0	905.6	0.06	-0.05	-2.30	
6,272.0	2.20	339.50	6,156.8	-550.3	713.9	901.4	0.86	0.80	14.79	
6,459.0	0.50	357.90	6,343.8	-546.1	712.6	897.8	0.93	-0.91	9.84	
6,646.0	0.30	121.10	6,530.8	-545.6	713.0	897.8	0.38	-0.11	65.88	
6,814.0	0.48	137.92	6,698.8	-546.3	713.8	898.9	0.12	0.11	10.01	
TARGET BOX 400' X 400' 659'FSL, 1958'FWL										
6,834.0	0.50	139.10	6,718.8	-546.5	714.0	899.1	0.12	0.11	5.92	
7,022.0	0.80	174.80	6,906.8	-548.4	714.6	900.8	0.26	0.16	18.99	
7,209.0	0.70	170.30	7,093.7	-550.8	714.9	902.5	0.06	-0.05	-2.41	

<b>Company:</b>	Synergy Resources	<b>Local Co-ordinate Reference:</b>	Well RBF 24-15D
<b>Project:</b>	SEC.15-T6N-R67W	<b>TVD Reference:</b>	WELL @ 4793.0ft (Original Well Elev)
<b>Site:</b>	RBF 24-15D Pad Sec.15-T6N-R67W	<b>MD Reference:</b>	WELL @ 4793.0ft (Original Well Elev)
<b>Well:</b>	RBF 24-15D	<b>North Reference:</b>	True
<b>Wellbore:</b>	Wellbore #1	<b>Survey Calculation Method:</b>	Minimum Curvature
<b>Design:</b>	Wellbore #1	<b>Database:</b>	Landmark

Survey									
Measured Depth (ft)	Inclination (°)	Azimuth (°)	Vertical Depth (ft)	+N/-S (ft)	+E/-W (ft)	Vertical Section (ft)	Dogleg Rate (°/100ft)	Build Rate (°/100ft)	Turn Rate (°/100ft)
7,422.0	0.60	163.60	7,306.7	-553.2	715.5	904.4	0.06	-0.05	-3.15
7,466.0	0.60	163.60	7,350.7	-553.6	715.6	904.7	0.00	0.00	0.00

Checked By: \_\_\_\_\_ Approved By: \_\_\_\_\_ Date: \_\_\_\_\_