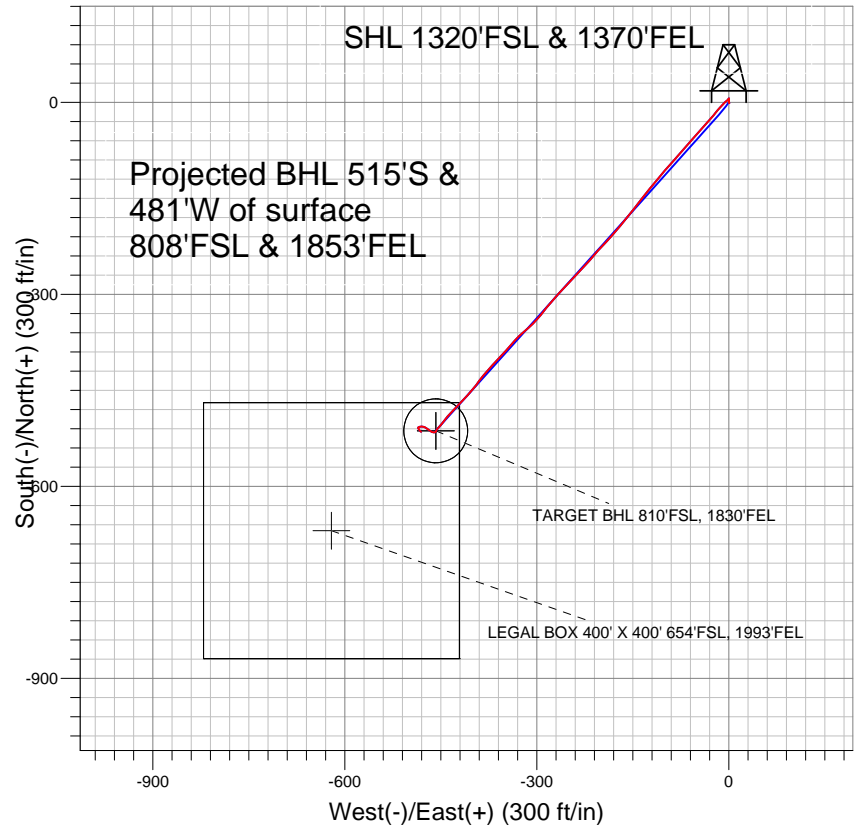


Anadarko, Weld County CO



LEGEND

- ◆ Badding 15-26, Wellbore #1, Plan #2 (5-23-11) V0
- Wellbore #1
- Survey #1

Final Survey Plot

Projected Final Survey -
8217'MD & 8150'TVD @ 704'VS
1.1 deg Inc 130.9 deg AZ

Project: SEC.26-T2N-R66W
Site: Badding 20-26 Pad Sec.26-T2N-R66W
Well: Badding 15-26
Plan: Wellbore #1



Anadarko, Weld County CO

SEC.26-T2N-R66W

Badding 20-26 Pad Sec.26-T2N-R66W

Badding 15-26

Wellbore #1

Survey: Survey #1

Standard Survey Report

31 May, 2011

Company:	Anadarko, Weld County CO	Local Co-ordinate Reference:	Well Badding 15-26
Project:	SEC.26-T2N-R66W	TVD Reference:	WELL @ 5103.0ft (Original Well Elev)
Site:	Badding 20-26 Pad Sec.26-T2N-R66W	MD Reference:	WELL @ 5103.0ft (Original Well Elev)
Well:	Badding 15-26	North Reference:	True
Wellbore:	Wellbore #1	Survey Calculation Method:	Minimum Curvature
Design:	Wellbore #1	Database:	Landmark

Project	SEC.26-T2N-R66W, Weld County, Colorado		
Map System:	US State Plane 1983	System Datum:	Mean Sea Level
Geo Datum:	North American Datum 1983		Using Well Reference Point
Map Zone:	Colorado Northern Zone		Using geodetic scale factor

Site	Badding 20-26 Pad Sec.26-T2N-R66W				
Site Position:		Northing:	1,282,247.28ft	Latitude:	40.105658
From:	Lat/Long	Easting:	3,212,676.00ft	Longitude:	-104.739672
Position Uncertainty:	0.0 ft	Slot Radius:	"	Grid Convergence:	0.49 °

Well	Badding 15-26					
Well Position	+N-S	0.0 ft	Northing:	1,282,246.63 ft	Latitude:	40.105657
	+E-W	0.0 ft	Easting:	3,212,645.79 ft	Longitude:	-104.739780
Position Uncertainty		0.0 ft	Wellhead Elevation:	ft	Ground Level:	5,089.0 ft

Wellbore	Wellbore #1				
Magnetics	Model Name	Sample Date	Declination (°)	Dip Angle (°)	Field Strength (nT)
	IGRF2010	3/18/2011	8.86	66.82	53,003

Design	Wellbore #1				
Audit Notes:					
Version:	1.0	Phase:	ACTUAL	Tie On Depth:	0.0
Vertical Section:	Depth From (TVD) (ft)	+N/-S (ft)	+E/-W (ft)	Direction (°)	
	0.0	0.0	0.0	221.73	

Survey Program	Date	5/31/2011			
From (ft)	To (ft)	Survey (Wellbore)	Tool Name	Description	
118.0	8,217.0	Survey #1 (Wellbore #1)	MWD	MWD - Standard	

Survey										
Measured Depth (ft)	Inclination (°)	Azimuth (°)	Vertical Depth (ft)	+N/-S (ft)	+E/-W (ft)	Vertical Section (ft)	Dogleg Rate (°/100ft)	Build Rate (°/100ft)	Turn Rate (°/100ft)	
0.0	0.00	0.00	0.0	0.0	0.0	0.0	0.00	0.00	0.00	
118.0	0.83	132.00	118.0	-0.6	0.6	0.0	0.70	0.70	0.00	
210.0	0.04	182.00	210.0	-1.0	1.1	0.0	0.87	-0.86	54.35	
303.0	0.09	220.00	303.0	-1.1	1.1	0.1	0.07	0.05	40.86	
413.0	0.09	278.00	413.0	-1.2	0.9	0.3	0.08	0.00	52.73	
546.0	0.40	334.00	546.0	-0.8	0.6	0.1	0.27	0.23	42.11	
679.0	0.40	344.00	679.0	0.1	0.3	-0.3	0.05	0.00	7.52	
812.0	0.60	7.00	812.0	1.2	0.3	-1.1	0.21	0.15	17.29	
945.0	0.80	1.10	945.0	2.9	0.4	-2.4	0.16	0.15	-4.44	
1,077.0	0.90	0.86	1,077.0	4.8	0.4	-3.9	0.08	0.08	-0.18	
1,171.0	0.70	345.90	1,170.9	6.1	0.3	-4.7	0.31	-0.21	-15.91	
1,260.0	0.60	199.90	1,259.9	6.2	0.0	-4.6	1.40	-0.11	-164.05	
1,348.0	0.60	213.50	1,347.9	5.4	-0.4	-3.7	0.16	0.00	15.45	

Company:	Anadarko, Weld County CO	Local Co-ordinate Reference:	Well Badding 15-26
Project:	SEC.26-T2N-R66W	TVD Reference:	WELL @ 5103.0ft (Original Well Elev)
Site:	Badding 20-26 Pad Sec.26-T2N-R66W	MD Reference:	WELL @ 5103.0ft (Original Well Elev)
Well:	Badding 15-26	North Reference:	True
Wellbore:	Wellbore #1	Survey Calculation Method:	Minimum Curvature
Design:	Wellbore #1	Database:	Landmark

Survey

Measured Depth (ft)	Inclination (°)	Azimuth (°)	Vertical Depth (ft)	+N/-S (ft)	+E/-W (ft)	Vertical Section (ft)	Dogleg Rate (°/100ft)	Build Rate (°/100ft)	Turn Rate (°/100ft)
1,437.0	2.10	224.00	1,436.9	3.8	-1.8	-1.6	1.70	1.69	11.80
1,526.0	2.10	231.40	1,525.9	1.6	-4.2	1.6	0.30	0.00	8.31
1,614.0	3.60	223.70	1,613.7	-1.4	-7.4	6.0	1.76	1.70	-8.75
1,703.0	4.50	222.70	1,702.5	-6.0	-11.7	12.2	1.01	1.01	-1.12
1,791.0	6.40	219.40	1,790.1	-12.3	-17.2	20.6	2.19	2.16	-3.75
1,880.0	7.70	220.60	1,878.4	-20.6	-24.2	31.5	1.47	1.46	1.35
1,969.0	9.00	220.70	1,966.5	-30.5	-32.6	44.4	1.46	1.46	0.11
2,057.0	9.80	221.40	2,053.3	-41.3	-42.0	58.8	0.92	0.91	0.80
2,146.0	10.20	222.40	2,141.0	-52.8	-52.4	74.3	0.49	0.45	1.12
2,235.0	11.40	220.70	2,228.4	-65.3	-63.4	90.9	1.39	1.35	-1.91
2,323.0	11.60	221.60	2,314.6	-78.5	-75.0	108.5	0.31	0.23	1.02
2,412.0	12.30	222.50	2,401.7	-92.2	-87.3	126.9	0.81	0.79	1.01
2,501.0	12.30	219.70	2,488.6	-106.4	-99.8	145.9	0.67	0.00	-3.15
2,589.0	11.80	219.70	2,574.7	-120.6	-111.5	164.2	0.57	-0.57	0.00
2,678.0	11.80	220.00	2,661.8	-134.6	-123.2	182.4	0.07	0.00	0.34
2,767.0	12.40	217.80	2,748.9	-149.1	-134.9	201.0	0.85	0.67	-2.47
2,855.0	11.70	216.60	2,834.9	-163.7	-146.0	219.3	0.84	-0.80	-1.36
2,944.0	11.30	219.90	2,922.1	-177.6	-157.0	237.0	0.86	-0.45	3.71
3,032.0	11.00	218.20	3,008.5	-190.9	-167.7	254.0	0.51	-0.34	-1.93
3,121.0	12.00	222.00	3,095.7	-204.4	-179.1	271.8	1.41	1.12	4.27
3,210.0	12.00	223.00	3,182.7	-218.0	-191.6	290.3	0.23	0.00	1.12
3,298.0	12.80	222.40	3,268.7	-231.9	-204.4	309.2	0.92	0.91	-0.68
3,387.0	12.40	218.70	3,355.5	-246.7	-217.1	328.6	1.01	-0.45	-4.16
3,476.0	13.10	225.40	3,442.3	-261.2	-230.2	348.2	1.84	0.79	7.53
3,564.0	12.90	223.60	3,528.1	-275.3	-244.1	367.9	0.51	-0.23	-2.05
3,653.0	12.70	223.30	3,614.9	-289.6	-257.7	387.7	0.24	-0.22	-0.34
3,742.0	12.10	219.60	3,701.8	-304.0	-270.3	406.8	1.12	-0.67	-4.16
3,830.0	12.10	220.10	3,787.9	-318.1	-282.1	425.2	0.12	0.00	0.57
3,919.0	12.00	218.90	3,874.9	-332.4	-293.9	443.8	0.30	-0.11	-1.35
4,007.0	12.00	225.20	3,961.0	-346.0	-306.2	462.0	1.49	0.00	7.16
4,096.0	12.70	230.30	4,047.9	-358.8	-320.3	480.9	1.46	0.79	5.73
4,185.0	12.10	222.00	4,134.8	-372.0	-334.0	499.9	2.11	-0.67	-9.33
4,273.0	12.80	221.60	4,220.8	-386.1	-346.7	518.9	0.80	0.80	-0.45
4,362.0	13.10	222.60	4,307.5	-400.9	-360.1	538.9	0.42	0.34	1.12
4,451.0	12.00	222.40	4,394.4	-415.2	-373.1	558.2	1.24	-1.24	-0.22
4,539.0	11.20	218.70	4,480.6	-428.6	-384.6	575.9	1.24	-0.91	-4.20
4,628.0	10.00	216.80	4,568.1	-441.5	-394.7	592.2	1.40	-1.35	-2.13
4,717.0	10.50	222.00	4,655.6	-453.7	-404.7	608.0	1.18	0.56	5.84
4,805.0	9.50	222.20	4,742.3	-465.1	-415.0	623.3	1.14	-1.14	0.23
4,894.0	8.30	224.70	4,830.2	-475.1	-424.4	637.1	1.42	-1.35	2.81
4,983.0	7.00	223.60	4,918.4	-483.6	-432.7	648.9	1.47	-1.46	-1.24
5,071.0	5.90	219.90	5,005.9	-490.9	-439.3	658.8	1.34	-1.25	-4.20
5,160.0	5.00	217.50	5,094.5	-497.5	-444.6	667.2	1.04	-1.01	-2.70
5,248.0	4.30	219.50	5,182.2	-503.1	-449.0	674.3	0.82	-0.80	2.27
5,337.0	3.10	220.90	5,271.0	-507.5	-452.7	680.1	1.35	-1.35	1.57
5,426.0	1.80	219.90	5,359.9	-510.4	-455.2	683.9	1.46	-1.46	-1.12
5,514.0	1.40	216.20	5,447.9	-512.3	-456.7	686.3	0.47	-0.45	-4.20
5,603.0	0.60	176.70	5,536.9	-513.7	-457.3	687.7	1.14	-0.90	-44.38
5,736.0	0.10	193.30	5,669.9	-514.5	-457.3	688.3	0.38	-0.38	12.48
5,866.1	0.30	235.02	5,800.0	-514.8	-457.6	688.8	0.18	0.15	32.06
TARGET BHL 810'FSL, 1830'FEL									
5,869.0	0.30	235.30	5,802.9	-514.8	-457.6	688.8	0.18	0.17	9.77
6,002.0	0.10	248.10	5,935.9	-515.0	-458.0	689.2	0.15	-0.15	9.62
6,135.0	0.50	251.50	6,068.9	-515.2	-458.7	689.8	0.30	0.30	2.56

Company:	Anadarko, Weld County CO	Local Co-ordinate Reference:	Well Badding 15-26
Project:	SEC.26-T2N-R66W	TVD Reference:	WELL @ 5103.0ft (Original Well Elev)
Site:	Badding 20-26 Pad Sec.26-T2N-R66W	MD Reference:	WELL @ 5103.0ft (Original Well Elev)
Well:	Badding 15-26	North Reference:	True
Wellbore:	Wellbore #1	Survey Calculation Method:	Minimum Curvature
Design:	Wellbore #1	Database:	Landmark

Survey

Measured Depth (ft)	Inclination (°)	Azimuth (°)	Vertical Depth (ft)	+N/-S (ft)	+E/-W (ft)	Vertical Section (ft)	Dogleg Rate (°/100ft)	Build Rate (°/100ft)	Turn Rate (°/100ft)
6,268.0	0.50	260.30	6,201.9	-515.5	-459.8	690.8	0.06	0.00	6.62
6,401.0	0.50	271.00	6,334.9	-515.6	-460.9	691.6	0.07	0.00	8.05
6,534.0	0.70	288.40	6,467.8	-515.4	-462.3	692.3	0.20	0.15	13.08
6,667.0	0.80	291.00	6,600.8	-514.8	-463.9	693.0	0.08	0.08	1.95
6,800.0	1.00	300.00	6,733.8	-513.8	-465.8	693.5	0.18	0.15	6.77
6,933.0	1.40	308.00	6,866.8	-512.3	-468.1	693.9	0.33	0.30	6.02
7,066.0	2.20	306.80	6,999.7	-509.7	-471.4	694.2	0.60	0.60	-0.90
7,199.0	2.10	292.10	7,132.6	-507.3	-475.7	695.2	0.42	-0.08	-11.05
7,227.7	1.99	288.09	7,161.4	-506.9	-476.7	695.6	0.63	-0.38	-13.96
TARGET CIRCLE 810'FSL & 1830'FEL									
7,232.0	1.98	287.45	7,165.6	-506.9	-476.8	695.7	0.63	-0.36	-14.83
LEGAL BOX 400' X 400' 654'FSL, 1993'FEL									
7,331.0	1.70	270.00	7,264.6	-506.4	-479.9	697.4	0.63	-0.28	-17.63
7,464.0	1.30	248.00	7,397.5	-506.9	-483.3	700.0	0.52	-0.30	-16.54
7,597.0	0.60	230.00	7,530.5	-508.0	-485.2	702.1	0.57	-0.53	-13.53
7,730.0	0.60	148.50	7,663.5	-509.0	-485.4	702.9	0.59	0.00	-61.28
7,863.0	0.50	147.60	7,796.5	-510.1	-484.7	703.3	0.08	-0.08	-0.68
7,996.0	1.20	145.80	7,929.5	-511.7	-483.6	703.8	0.53	0.53	-1.35
8,129.0	1.10	130.90	8,062.4	-513.7	-481.9	704.1	0.24	-0.08	-11.20
8,217.0	1.10	130.90	8,150.4	-514.8	-480.6	704.1	0.00	0.00	0.00

Checked By: _____ Approved By: _____ Date: _____