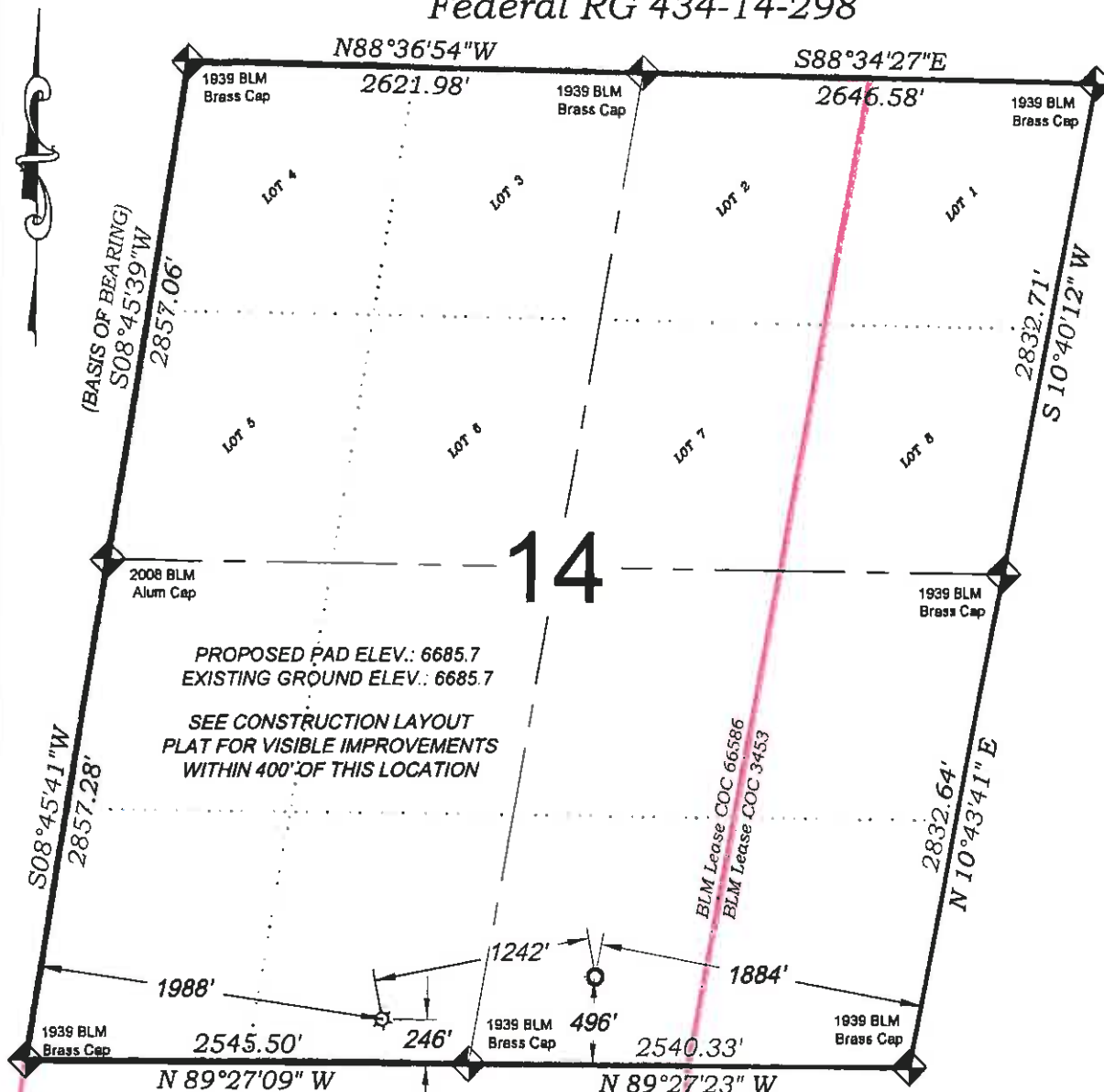


Federal RG 434-14-298



SURFACE HOLE LOCATION

246 FSL
1988 FWL

NAD 83

LATITUDE

39.870302°

LONGITUDE

-108.363154°

NORTHING

1754554.6

EASTING

2196446.8

BOTTOM HOLE LOCATION

496 FSL
1884 FEL

NAD 83

LATITUDE

39.871063°

LONGITUDE

-108.358840°

NORTHING

1754793.7

EASTING

2197665.7

- LEGEND -

FIELD LOCATED SECTION
MONUMENTS AS DESCRIBED



FIELD SURVEYED
WELL LOCATION



CALCULATED BOTTOM
HOLE LOCATION



CALCULATED SECTION
CORNER LOCATION



NOTES

- 1) ELEVATIONS BASED ON N.A.V.D. 1988 PUBLISHED COORDINATES.
- 2) LATITUDES AND LONGITUDES ARE BASE ON NAD 83, PUBLISHED COORDINATES.
- 3) STATE PLANE COORDINATES ARE BASED ON COLORADO CENTRAL ZONE, U.S. SURVEY FEET.
- 4) ELEVATION MASK SET TO 15"
- 5) GPS OPERATOR J. KIRKPATRICK, OBSERVED A PDOP OF 1.8 FOR SURVEY POINT NUMBER 30509.
- 6) SURFACE AND BOTTOM HOLE LOCATIONS ARE MEASURED 90° FROM SECTION LINES.

WELL LOCATION PLAT Prepared for:
Williams Williams Production, RMT

SE1/4 SW1/4, SECTION 14
T. 2 S., R. 98 W. of the 6th P.M.
Rio BLANCO COUNTY, COLORADO

SURVEYORS STATEMENT

I, MICHAEL J. LANGHORNE, A REGISTERED LAND SURVEYOR IN THE STATE OF COLORADO DO HEREBY CERTIFY THAT THE SURVEY SHOWN HEREON WAS PREPARED UNDER MY DIRECT SUPERVISION AND HAS BEEN STAKED ON THE GROUND AS SHOWN ON THE PLAT AND CHECKING THAT THIS MAP IS A TRUE REPRESENTATION THEREOF.

MICHAEL J. LANGHORNE COLORADO REGISTRATION NO. 36572
FOR AND ON BEHALF OF
BOOKCLIFF SURVEY SERVICES, INC.

REFERENCES

- 1) CORRECTIVE DEPENDENT RESURVEY T. 2 S., R. 98 W., 6th P.M (GLO PLAT)
- 2) U.S.G.S. QUAD: Rock School and Square S Ranch, CO

REVISED: 6/20/11

SURVEY DATE: 3/23/10
MAP DATE: 6/2/10
SCALE: 1" = 1000'
PLAT: 1 of 1
PROJECT: Williams Highland