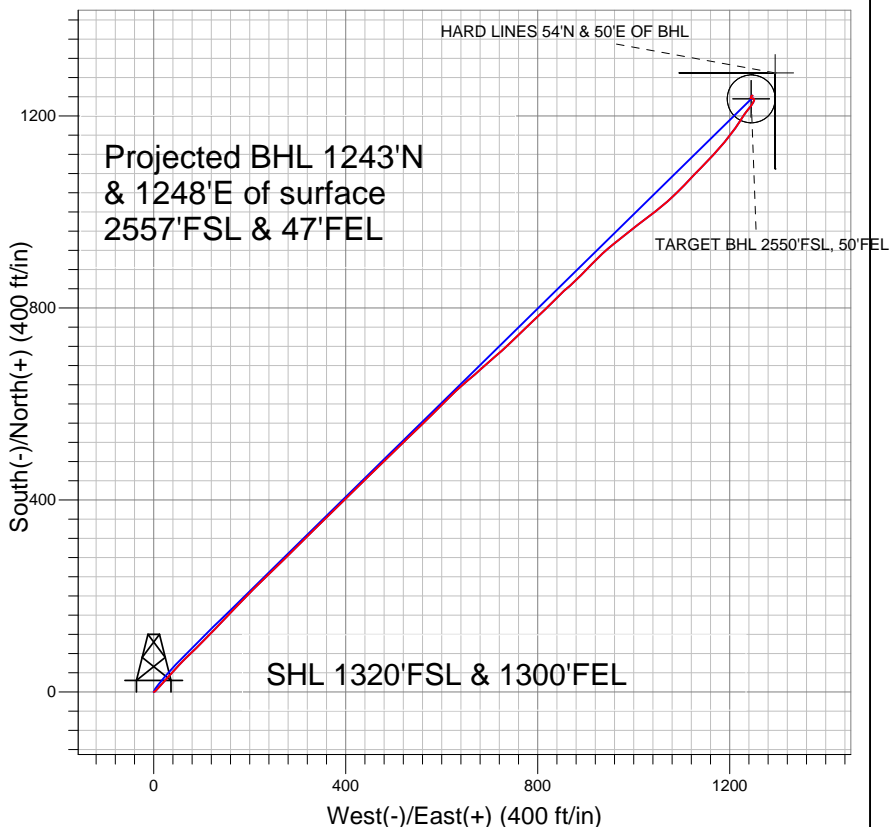


## Anadarko, Weld County CO



### LEGEND

- ✕ Badding 40-26, Wellbore #1, Plan #1 (3-17-11) V0
- Wellbore #1
- Survey #1

## Final Survey Plot

Projected Final Survey -  
8466'MD & 8149'TVD @ 1761'VS  
0.7 deg Inc 74.3 deg AZ

Project: SEC.26-T2N-R66W  
Site: Badding 20-26 Pad Sec.26-T2N-R66W  
Well: Badding 40-26  
Plan: Wellbore #1



## **Anadarko, Weld County CO**

**SEC.26-T2N-R66W**

**Badding 20-26 Pad Sec.26-T2N-R66W**

**Badding 40-26**

**Wellbore #1**

**Survey: Survey #1**

## **Standard Survey Report**

**03 May, 2011**

<b>Company:</b>	Anadarko, Weld County CO	<b>Local Co-ordinate Reference:</b>	Well Badding 40-26
<b>Project:</b>	SEC.26-T2N-R66W	<b>TVD Reference:</b>	WELL @ 5101.0ft (Original Well Elev)
<b>Site:</b>	Badding 20-26 Pad Sec.26-T2N-R66W	<b>MD Reference:</b>	WELL @ 5101.0ft (Original Well Elev)
<b>Well:</b>	Badding 40-26	<b>North Reference:</b>	True
<b>Wellbore:</b>	Wellbore #1	<b>Survey Calculation Method:</b>	Minimum Curvature
<b>Design:</b>	Wellbore #1	<b>Database:</b>	Landmark

<b>Project</b>	SEC.26-T2N-R66W, Weld County, Colorado		
<b>Map System:</b>	US State Plane 1983	<b>System Datum:</b>	Mean Sea Level
<b>Geo Datum:</b>	North American Datum 1983		Using Well Reference Point
<b>Map Zone:</b>	Colorado Northern Zone		Using geodetic scale factor

Site	Badding 20-26 Pad Sec.26-T2N-R66W				
Site Position:		Northing:	1,282,247.28 ft	Latitude:	40.105658
From:	Lat/Long	Easting:	3,212,676.00 ft	Longitude:	-104.739672
Position Uncertainty:	0.0 ft	Slot Radius:	"	Grid Convergence:	0.49 °

Well	Badding 40-26					
Well Position	+N/-S	0.0 ft	Northing:	1,282,247.59 ft	Latitude:	40.105658
	+E/-W	0.0 ft	Easting:	3,212,716.00 ft	Longitude:	-104.739529
Position Uncertainty		0.0 ft	Wellhead Elevation:	ft	Ground Level:	5,087.0 ft

<b>Wellbore</b>	Wellbore #1				
<b>Magnetics</b>	<b>Model Name</b>	<b>Sample Date</b>	<b>Declination (°)</b>	<b>Dip Angle (°)</b>	<b>Field Strength (nT)</b>
	IGRF2010	3/17/2011	8.86	66.82	53,003

<b>Design</b>	Wellbore #1				
<b>Audit Notes:</b>					
<b>Version:</b>	1.0	<b>Phase:</b>	ACTUAL	<b>Tie On Depth:</b>	0.0
<b>Vertical Section:</b>	<b>Depth From (TVD) (ft)</b>	<b>+N/-S (ft)</b>	<b>+E/-W (ft)</b>	<b>Direction (°)</b>	
	0.0	0.0	0.0	45.21	

<b>Survey Program</b>	<b>Date</b>	5/3/2011			
<b>From (ft)</b>	<b>To (ft)</b>	<b>Survey (Wellbore)</b>	<b>Tool Name</b>	<b>Description</b>	
149.0	8,466.0	Survey #1 (Wellbore #1)	MWD	MWD - Standard	

<b>Survey</b>										
<b>Measured Depth (ft)</b>	<b>Inclination (°)</b>	<b>Azimuth (°)</b>	<b>Vertical Depth (ft)</b>	<b>+N/-S (ft)</b>	<b>+E/-W (ft)</b>	<b>Vertical Section (ft)</b>	<b>Dogleg Rate (°/100ft)</b>	<b>Build Rate (°/100ft)</b>	<b>Turn Rate (°/100ft)</b>	
0.0	0.00	0.00	0.0	0.0	0.0	0.0	0.00	0.00	0.00	
149.0	1.00	75.60	149.0	0.3	1.3	1.1	0.67	0.67	0.00	
241.0	1.90	49.30	241.0	1.5	3.2	3.3	1.19	0.98	-28.59	
334.0	3.50	41.90	333.9	4.6	6.3	7.7	1.76	1.72	-7.96	
457.0	6.10	42.10	456.4	12.3	13.1	18.0	2.11	2.11	0.16	
546.0	7.60	41.40	544.8	20.2	20.2	28.6	1.69	1.69	-0.79	
634.0	9.80	42.30	631.8	30.1	29.1	41.9	2.50	2.50	1.02	
723.0	11.60	43.40	719.2	42.2	40.3	58.4	2.04	2.02	1.24	
812.0	13.30	42.20	806.1	56.3	53.4	77.5	1.93	1.91	-1.35	
900.0	14.90	45.60	891.5	71.7	68.3	99.0	2.05	1.82	3.86	
989.0	16.70	45.70	977.1	88.7	85.6	123.2	2.02	2.02	0.11	
1,077.0	18.60	45.00	1,060.9	107.4	104.6	149.9	2.17	2.16	-0.80	
1,196.0	18.50	43.50	1,173.8	134.5	131.0	187.7	0.41	-0.08	-1.26	

<b>Company:</b>	Anadarko, Weld County CO	<b>Local Co-ordinate Reference:</b>	Well Badding 40-26
<b>Project:</b>	SEC.26-T2N-R66W	<b>TVD Reference:</b>	WELL @ 5101.0ft (Original Well Elev)
<b>Site:</b>	Badding 20-26 Pad Sec.26-T2N-R66W	<b>MD Reference:</b>	WELL @ 5101.0ft (Original Well Elev)
<b>Well:</b>	Badding 40-26	<b>North Reference:</b>	True
<b>Wellbore:</b>	Wellbore #1	<b>Survey Calculation Method:</b>	Minimum Curvature
<b>Design:</b>	Wellbore #1	<b>Database:</b>	Landmark

## Survey

Measured Depth (ft)	Inclination (°)	Azimuth (°)	Vertical Depth (ft)	+N/-S (ft)	+E/-W (ft)	Vertical Section (ft)	Dogleg Rate (°/100ft)	Build Rate (°/100ft)	Turn Rate (°/100ft)
1,285.0	17.20	42.50	1,258.5	154.5	149.6	215.0	1.50	-1.46	-1.12
1,374.0	17.00	44.80	1,343.5	173.4	167.6	241.1	0.79	-0.22	2.58
1,462.0	18.40	45.20	1,427.4	192.3	186.6	267.9	1.60	1.59	0.45
1,551.0	18.90	44.60	1,511.7	212.5	206.7	296.4	0.60	0.56	-0.67
1,640.0	20.10	45.30	1,595.6	233.5	227.6	326.1	1.37	1.35	0.79
1,726.0	21.30	46.40	1,676.0	254.7	249.5	356.5	1.47	1.40	1.28
1,815.0	22.60	45.20	1,758.6	277.9	273.3	389.7	1.55	1.46	-1.35
1,904.0	24.00	46.00	1,840.3	302.5	298.5	424.9	1.61	1.57	0.90
1,992.0	24.20	44.70	1,920.7	327.7	324.0	460.9	0.64	0.23	-1.48
2,079.0	24.30	44.60	2,000.0	353.2	349.1	496.6	0.12	0.11	-0.11
2,168.0	24.00	45.90	2,081.2	378.8	375.0	533.0	0.69	-0.34	1.46
2,257.0	23.60	45.80	2,162.6	403.8	400.8	568.9	0.45	-0.45	-0.11
2,348.0	23.60	45.90	2,246.0	429.2	426.9	605.3	0.04	0.00	0.11
2,437.0	23.40	45.90	2,327.6	453.9	452.4	640.8	0.22	-0.22	0.00
2,527.0	23.00	45.60	2,410.4	478.6	477.8	676.3	0.46	-0.44	-0.33
2,617.0	23.30	45.80	2,493.1	503.3	503.1	711.7	0.34	0.33	0.22
2,706.0	23.30	45.70	2,574.9	527.9	528.3	746.9	0.04	0.00	-0.11
2,796.0	24.00	46.20	2,657.3	553.0	554.3	783.0	0.81	0.78	0.56
2,884.0	23.30	45.80	2,737.9	577.5	579.7	818.3	0.82	-0.80	-0.45
2,973.0	23.30	44.20	2,819.6	602.4	604.6	853.5	0.71	0.00	-1.80
3,062.0	23.00	46.40	2,901.5	627.0	629.4	888.4	1.03	-0.34	2.47
3,150.0	23.30	50.80	2,982.4	649.9	655.4	923.0	1.99	0.34	5.00
3,239.0	24.90	48.10	3,063.6	673.5	682.9	959.2	2.18	1.80	-3.03
3,328.0	24.90	49.10	3,144.4	698.3	711.1	996.6	0.47	0.00	1.12
3,416.0	24.30	46.60	3,224.4	722.9	738.2	1,033.2	1.36	-0.68	-2.84
3,505.0	24.60	46.10	3,305.4	748.3	764.9	1,070.0	0.41	0.34	-0.56
3,594.0	24.00	46.50	3,386.5	773.6	791.3	1,106.6	0.70	-0.67	0.45
3,682.0	23.30	45.70	3,467.1	798.1	816.8	1,141.9	0.88	-0.80	-0.91
3,771.0	23.90	45.10	3,548.7	823.1	842.1	1,177.6	0.73	0.67	-0.67
3,860.0	22.80	48.30	3,630.4	847.3	867.8	1,212.8	1.89	-1.24	3.60
3,948.0	21.80	45.00	3,711.8	870.2	892.1	1,246.2	1.82	-1.14	-3.75
4,037.0	20.40	43.60	3,794.8	893.1	914.5	1,278.2	1.67	-1.57	-1.57
4,126.0	19.60	47.70	3,878.5	914.4	936.2	1,308.6	1.81	-0.90	4.61
4,214.0	20.20	51.20	3,961.2	933.9	959.0	1,338.5	1.52	0.68	3.98
4,303.0	20.80	51.30	4,044.6	953.4	983.3	1,369.5	0.68	0.67	0.11
4,391.0	19.50	52.60	4,127.2	972.1	1,007.1	1,399.6	1.56	-1.48	1.48
4,480.0	20.00	53.10	4,211.0	990.2	1,031.1	1,429.4	0.59	0.56	0.56
4,569.0	22.20	50.50	4,294.0	1,010.1	1,056.3	1,461.2	2.69	2.47	-2.92
4,657.0	23.80	46.60	4,375.0	1,032.8	1,082.0	1,495.5	2.51	1.82	-4.43
4,746.0	21.00	43.90	4,457.3	1,056.7	1,106.1	1,529.4	3.35	-3.15	-3.03
4,835.0	18.50	43.90	4,541.0	1,078.3	1,127.0	1,559.5	2.81	-2.81	0.00
4,923.0	18.70	43.50	4,624.4	1,098.6	1,146.3	1,587.5	0.27	0.23	-0.45
5,012.0	16.50	44.10	4,709.3	1,118.1	1,165.0	1,614.4	2.48	-2.47	0.67
5,101.0	14.90	40.50	4,795.0	1,135.8	1,181.2	1,638.5	2.10	-1.80	-4.04
5,189.0	14.50	37.70	4,880.1	1,153.2	1,195.3	1,660.7	0.93	-0.45	-3.18
5,278.0	12.00	36.80	4,966.7	1,169.4	1,207.6	1,680.9	2.82	-2.81	-1.01
5,366.0	10.90	34.30	5,052.9	1,183.6	1,217.8	1,698.1	1.37	-1.25	-2.84
5,455.0	9.00	31.10	5,140.6	1,196.5	1,226.1	1,713.1	2.22	-2.13	-3.60
5,544.0	7.50	38.20	5,228.7	1,207.0	1,233.3	1,725.6	2.03	-1.69	7.98
5,632.0	5.70	37.20	5,316.1	1,215.0	1,239.5	1,735.7	2.05	-2.05	-1.14
5,721.0	4.80	37.90	5,404.7	1,221.5	1,244.5	1,743.7	1.01	-1.01	0.79
5,810.0	3.50	31.70	5,493.5	1,226.7	1,248.2	1,750.1	1.54	-1.46	-6.97
5,898.0	1.70	20.70	5,581.4	1,230.2	1,250.1	1,753.9	2.11	-2.05	-12.50
5,987.0	0.80	29.10	5,670.4	1,232.0	1,250.8	1,755.7	1.03	-1.01	9.44

<b>Company:</b>	Anadarko, Weld County CO	<b>Local Co-ordinate Reference:</b>	Well Badding 40-26
<b>Project:</b>	SEC.26-T2N-R66W	<b>TVD Reference:</b>	WELL @ 5101.0ft (Original Well Elev)
<b>Site:</b>	Badding 20-26 Pad Sec.26-T2N-R66W	<b>MD Reference:</b>	WELL @ 5101.0ft (Original Well Elev)
<b>Well:</b>	Badding 40-26	<b>North Reference:</b>	True
<b>Wellbore:</b>	Wellbore #1	<b>Survey Calculation Method:</b>	Minimum Curvature
<b>Design:</b>	Wellbore #1	<b>Database:</b>	Landmark

**Survey**

Measured Depth (ft)	Inclination (°)	Azimuth (°)	Vertical Depth (ft)	+N/-S (ft)	+E/-W (ft)	Vertical Section (ft)	Dogleg Rate (°/100ft)	Build Rate (°/100ft)	Turn Rate (°/100ft)
6,120.0	0.40	338.80	5,803.4	1,233.2	1,251.1	1,756.8	0.47	-0.30	-37.82
6,216.7	0.62	339.87	5,900.0	1,234.1	1,250.8	1,757.1	0.23	0.23	1.11
<b>TARGET BHL 2550'FSL, 50'FEL</b>									
6,253.0	0.70	340.10	5,936.4	1,234.4	1,250.7	1,757.3	0.23	0.23	0.63
6,386.0	0.50	16.70	6,069.4	1,235.8	1,250.6	1,758.1	0.32	-0.15	27.52
6,519.0	0.70	274.00	6,202.3	1,236.4	1,249.9	1,758.1	0.71	0.15	-77.22
6,652.0	0.70	271.10	6,335.3	1,236.4	1,248.3	1,757.0	0.03	0.00	-2.18
6,785.0	0.30	278.80	6,468.3	1,236.5	1,247.1	1,756.2	0.30	-0.30	5.79
6,918.0	0.30	304.30	6,601.3	1,236.8	1,246.5	1,756.0	0.10	0.00	19.17
7,051.0	0.20	266.20	6,734.3	1,236.9	1,246.0	1,755.7	0.14	-0.08	-28.65
7,184.0	0.30	236.10	6,867.3	1,236.7	1,245.5	1,755.2	0.12	0.08	-22.63
7,317.0	0.40	318.30	7,000.3	1,236.9	1,244.9	1,754.9	0.35	0.08	61.80
7,450.0	0.40	270.50	7,133.3	1,237.2	1,244.1	1,754.6	0.24	0.00	-35.94
7,513.7	0.29	298.09	7,197.0	1,237.3	1,243.7	1,754.4	0.31	-0.17	43.33
<b>TARGET CIRCLE 2550'FSL &amp; 50'FEL</b>									
7,582.0	0.30	339.60	7,265.3	1,237.6	1,243.5	1,754.4	0.31	0.01	60.75
7,715.0	0.50	14.20	7,398.3	1,238.5	1,243.5	1,755.0	0.23	0.15	26.02
7,848.0	0.60	140.20	7,531.3	1,238.5	1,244.1	1,755.5	0.74	0.08	94.74
7,981.0	0.80	17.20	7,664.3	1,238.8	1,244.9	1,756.2	0.93	0.15	-92.48
8,114.0	0.60	338.20	7,797.3	1,240.4	1,244.9	1,757.3	0.38	-0.15	-29.32
8,247.0	0.70	49.20	7,930.3	1,241.5	1,245.2	1,758.4	0.57	0.08	53.38
8,380.0	0.70	74.30	8,063.3	1,242.3	1,246.6	1,759.9	0.23	0.00	18.87
8,434.4	0.70	74.30	8,117.7	1,242.5	1,247.3	1,760.5	0.00	0.00	0.00
<b>HARD LINES 54'N &amp; 50'E OF BHL</b>									
8,466.0	0.70	74.30	8,149.3	1,242.6	1,247.6	1,760.9	0.00	0.00	0.00

Checked By: _____	Approved By: _____	Date: _____
-------------------	--------------------	-------------