

Downhole Schematic for Federal 25-2BB (PH25)



Project : South Piceance

API # : 05045191220000

Surface Location : SENE Sec 25 T7S - R95W 6th PM

Area : Parachute

County : GARFIELD

BHL : SENE-25-7S-95 W 6th PM

As Of : 06/18/2011

GL : 6064.0 ft

KB to GL : 22.0 ft

KB : 6086.0 ft

Set @	Section	Hole Conductor	Casing	Mass	Set At	Length	Thread	Grade	Description
40	Surface	26.000	16	42	40	40		A52A	Joint
	Surface	12.250	9.625	0	1,130	1			Cement Shoe
			9.625	36	1,129	44	LT&C	J55	Csg. Shoe Track
			9.625	36	1,084	1,056	LT&C	J55	Casing
1130			9.625	0	29	5			Casing Head
			9.625	36	23	27	LT&C	J55	Landing Jt.
	Production	8.750	4.5	0	7,029	1	LT&C		Float Shoe
			4.5	11.6	7,028	41	LT&C	E-80	Casing
			4.5	0	6,987	1	LT&C		Float Collar
			4.5	11.6	6,985	453	LT&C	E-80	Casing
			4.5	11.6	6,533	23	LT&C	E-80	Marker Jt.
			4.5	11.6	6,510	987	LT&C	E-80	Casing
			4.5	11.6	5,523	23	LT&C	E-80	Marker Jt.
			4.5	11.6	5,500	5,472	LT&C	E-80	Casing
			4.5	11.6	29	6	LT&C	E-80	Mandel w/pup jt.
			4.5	11.6	23	28	LT&C	P-110	Landing Jt.

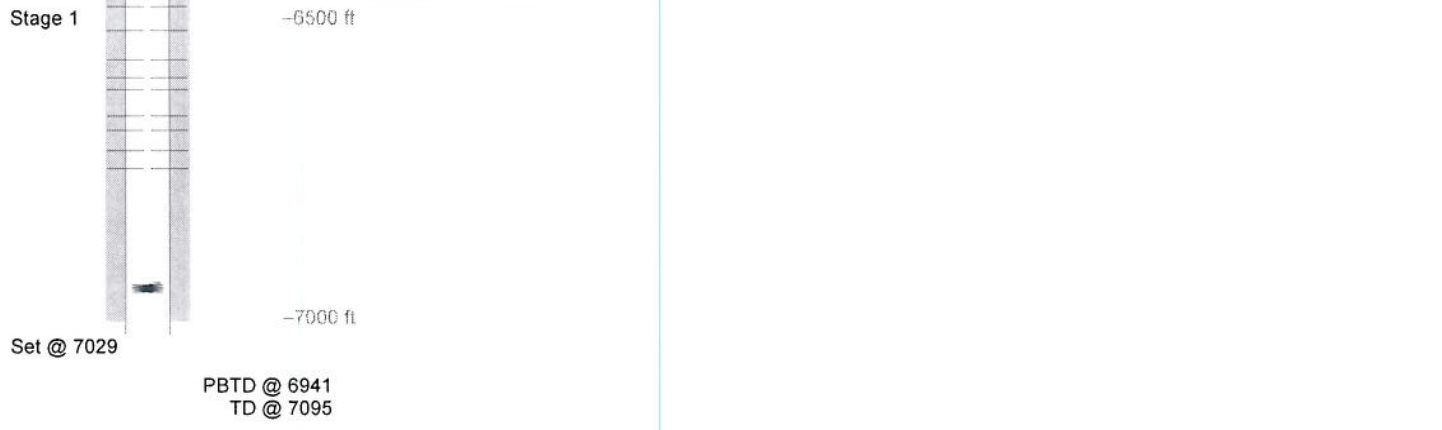
Section	Sequence	Top	Density	Blend / Additives
Surface		0	8.3	20 bbls. water spacer /
	Lead	0	12.5	12.5 #/gal. -Class G / G+2%D79+0.2%D46+0.25 pps D29
	Tail	862	15.8	15.8 #/gal. - Class G / D907+1.25%SOO1+0.2%D046+0.25ppsD29
Production		0	0.0	Water / 20 bbls
	Lead	0	0.0	Mudpush II / 30 bbls
	Tail	0	0.0	Zonelock / 30 bbls.
Conductor	Fill	3,110	9.6	LiteCrete / 41 #/sk D907, 13 #/sk D154, 46 #/sk D124, .3% D065, .2% D046, .256 #/sk D029, .350% D013
		0	0.0	4 yards redi mix /

O.D.	Length	Depth	Description
0.000	20.00	20.00	KBTH -2.00
3.990	0.83	20.83	4 1/6 5K Wood Group
2.594	0.68	21.51	2 3/8 N80 saver sub
2.375	6,069.16	6,090.67	185 jts 2 3/8 J55 4.7# Eue Tbg
3.063	0.98	6,091.65	1.81 F-Nipple
2.375	32.89	6,124.54	1 jt 2 3/8 J55 4.7# Eue Tbg
3.063	0.92	6,125.46	Top 1/2 pump off bit sub
3.250	1.21	6,941.00	btm 1/2 POBS & 3 3/4" Mill

Stage	Date	From	To	Shots	From	To	Shots
Stage 7	05/23/2011	6,750	6,751	3	5,784	5,785	3
		6,720	6,721	3	5,768	5,769	3
		6,686	6,687	3	5,752	5,753	3
		6,662	6,663	3	5,736	5,737	3
		6,618	6,619	3	5,708	5,709	3
Stage 6	05/27/2011	6,598	6,599	3	5,658	5,659	3
		6,568	6,569	3	5,644	5,645	3
		6,520	6,521	3	5,614	5,615	3
		6,480	6,481	3	5,590	5,591	3
		6,440	6,441	3	5,564	5,565	3
Stage 5	05/31/2011	6,422	6,423	3	5,546	5,547	3
		6,398	6,399	3	5,532	5,533	3
		6,370	6,371	3	5,504	5,505	3
		6,350	6,351	3	5,482	5,483	3
		6,312	6,313	3	5,436	5,437	3
Stage 4	05/25/2011	6,300	6,301	3	5,422	5,423	3
		6,280	6,281	3	5,380	5,381	3
		6,218	6,219	3	5,360	5,361	3
		6,128	6,129	3	5,322	5,323	3
		6,096	6,097	3	5,308	5,309	3
Stage 3	05/26/2011	6,076	6,077	3	5,290	5,291	3
		6,038	6,039	3	5,264	5,265	3
		6,012	6,013	3	5,252	5,253	3
		5,998	5,999	3	5,208	5,209	3
		5,974	5,975	3	5,186	5,187	3
Stage 2	05/26/2011	5,946	5,947	3	5,170	5,171	3
		5,920	5,921	3	5,146	5,147	3
		5,874	5,875	3	5,118	5,119	3
		5,852	5,853	3	5,102	5,103	3
		5,822	5,823	3	5,068	5,069	3
Stage 1	05/26/2011	5,804	5,805	3	4,986	4,987	3

Frac Summary
 Stage 1 : 6,480 - 6,751, 27 - 0.340" shots, 8287 bbls of Slickwater Report Date: 05/24/2011
 Stage 2 : 6,218 - 6,441, 27 - 0.340" shots, 6953 bbls of Slickwater Report Date: 05/25/2011
 Stage 3 : 5,920 - 6,129, 27 - 0.340" shots, 10857 bbls of Slickwater Report Date: 05/26/2011
 Stage 4 : 5,708 - 5,875, 27 - 0.340" shots, 10952 bbls of Slickwater Report Date: 05/27/2011
 Stage 5 : 5,482 - 5,659, 27 - 0.340" shots, 11905 bbls of Slickwater Report Date: 05/27/2011
 Stage 6 : 5,252 - 5,437, 27 - 0.340" shots, 13062 bbls of Slickwater Report Date: 05/31/2011
 Stage 7 : 4,986 - 5,209, 27 - 0.340" shots, 6399 bbls of Slickwater Report Date: 06/01/2011

Comments
 06/18/2011 SIBHP 0,



PBTD @ 6941
 TD @ 7095