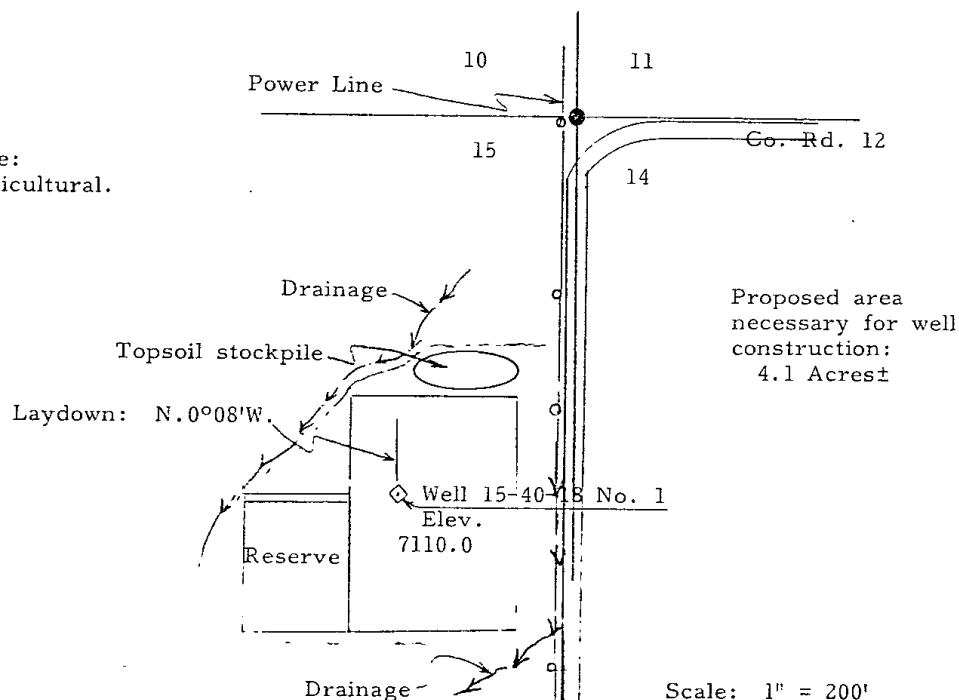


Present land use:
Dryland agricultural.



KNOW ALL MEN BY THESE PRESENTS:
THAT I, FREDRIC P. THOMAS
do hereby certify that I prepared this plat from an
actual and accurate survey of the land and that the
same is true and correct to the best of my knowledge
and belief.

Fredric P. Thomas

FREDRIC P. THOMAS
Reg. L.S. and P.E.
Colo. Reg. No. 6728

Bearing by
Solar
observation

THOMAS Engineering Inc.

215 N. Linden
Cortez, Colorado
365-4496