

Phoenix Surveys, Inc.

COMPENSATED DENSITY  
COMPENSATED NEUTRON  
MICROLOG

Company

Noble Energy Inc.

Well

Waiketu USA AB01-06P

Field

Wattenberg

County

Weld

State/Province

Colorado

Location

1800' FNL & 2160' FNL

Sec

1, TWP. 7N, R9E 64W

County

SE NW

Indication

GL 4875

Log Measured From

ICB

Depth

7208

Bottom Logged Interval

7208 - 7268

Casing

822

Casing

Next Logged

Tool Bit

Chemical

Depth / Velocity

7208 / 123

Print Read Case

3.30 @ 63 F

Print @ Mass Temp

2.02 @ 63 F

Print @ Mass Temp

2.02 @ 63 F

Source of Print File

Measure 7 CMC

Print @ BHT

1.02 @ 204 F

Time Correlation Shipped

0045

Maximum Recorded Temperature

204 F

Equipment Number

204 F

Surveyed By

Br. Schmitt

Worked By

McWhorter

Company

Noble Energy Inc.

Well

Waiketu USA AB01-06P

Field

Wattenberg

County

Weld

State/Province

Colorado

Location

1800' FNL & 2160' FNL

Sec

1, TWP. 7N, R9E 64W

County

SE NW

Indication

GL 4875

Log Measured From

ICB

Depth

7208

Bottom Logged Interval

7208 - 7268

Casing

822

Casing

Next Logged

Tool Bit

Chemical

Depth / Velocity

7208 / 123

Print Read Case

3.30 @ 63 F

Print @ Mass Temp

2.02 @ 63 F

Print @ Mass Temp

2.02 @ 63 F

Source of Print File

Measure 7 CMC

Print @ BHT

1.02 @ 204 F

Time Correlation Shipped

0045

Maximum Recorded Temperature

204 F

Equipment Number

204 F

Surveyed By

Br. Schmitt

Worked By

McWhorter

Company

Noble Energy Inc.

Well

Waiketu USA AB01-06P

Field

Wattenberg

County

Weld

State/Province

Colorado

Location

1800' FNL & 2160' FNL

Sec

1, TWP. 7N, R9E 64W

County

SE NW

Indication

GL 4875

Log Measured From

ICB

Depth

7208

Bottom Logged Interval

7208 - 7268

Casing

822

Casing

Next Logged

Tool Bit

Chemical

Depth / Velocity

7208 / 123

Print Read Case

3.30 @ 63 F

Print @ Mass Temp

2.02 @ 63 F

Print @ Mass Temp

2.02 @ 63 F

Source of Print File

Measure 7 CMC

Print @ BHT

1.02 @ 204 F

Time Correlation Shipped

0045

Maximum Recorded Temperature

204 F

Equipment Number

204 F

Surveyed By

Br. Schmitt

Worked By

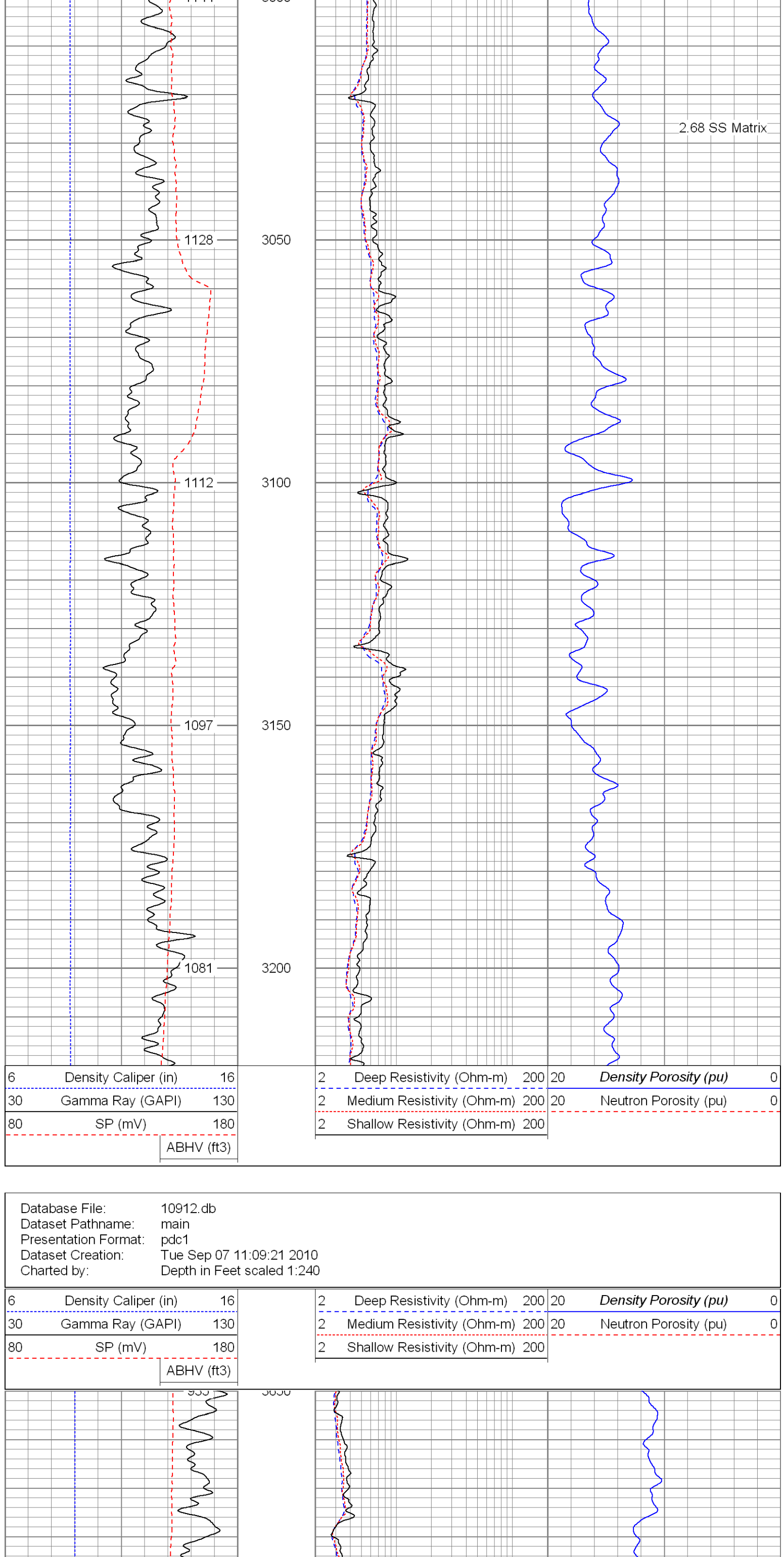
McWhorter

All interpretations are opinions based on inferences from electrical or other measurements and we cannot and do not guarantee the accuracy or correctness of any interpretation, and we shall not, except in the case of gross or willful negligence on our part, be liable or responsible for any loss, costs, damages, or expenses incurred or sustained by anyone resulting from any interpretation made by any of our officers, agents or employees. These interpretations are also subject to our general terms and conditions set out in our current Price Schedule.

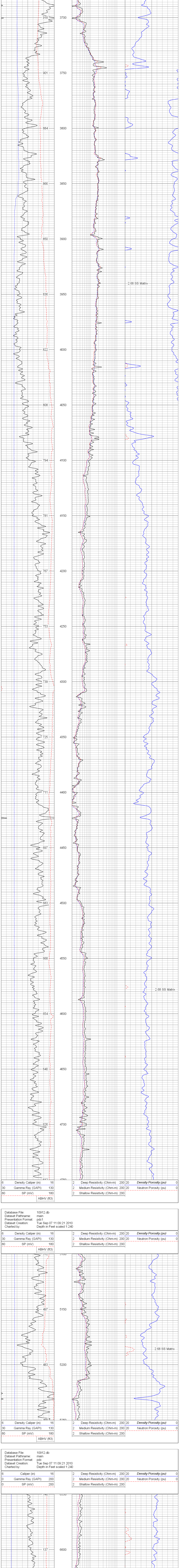
Comments

Annular volume calculated for 4.5" casing  
Cade Drilling Rig 2  
Thank you for using Phoenix Surveys!!  
API #: 05-123-31251

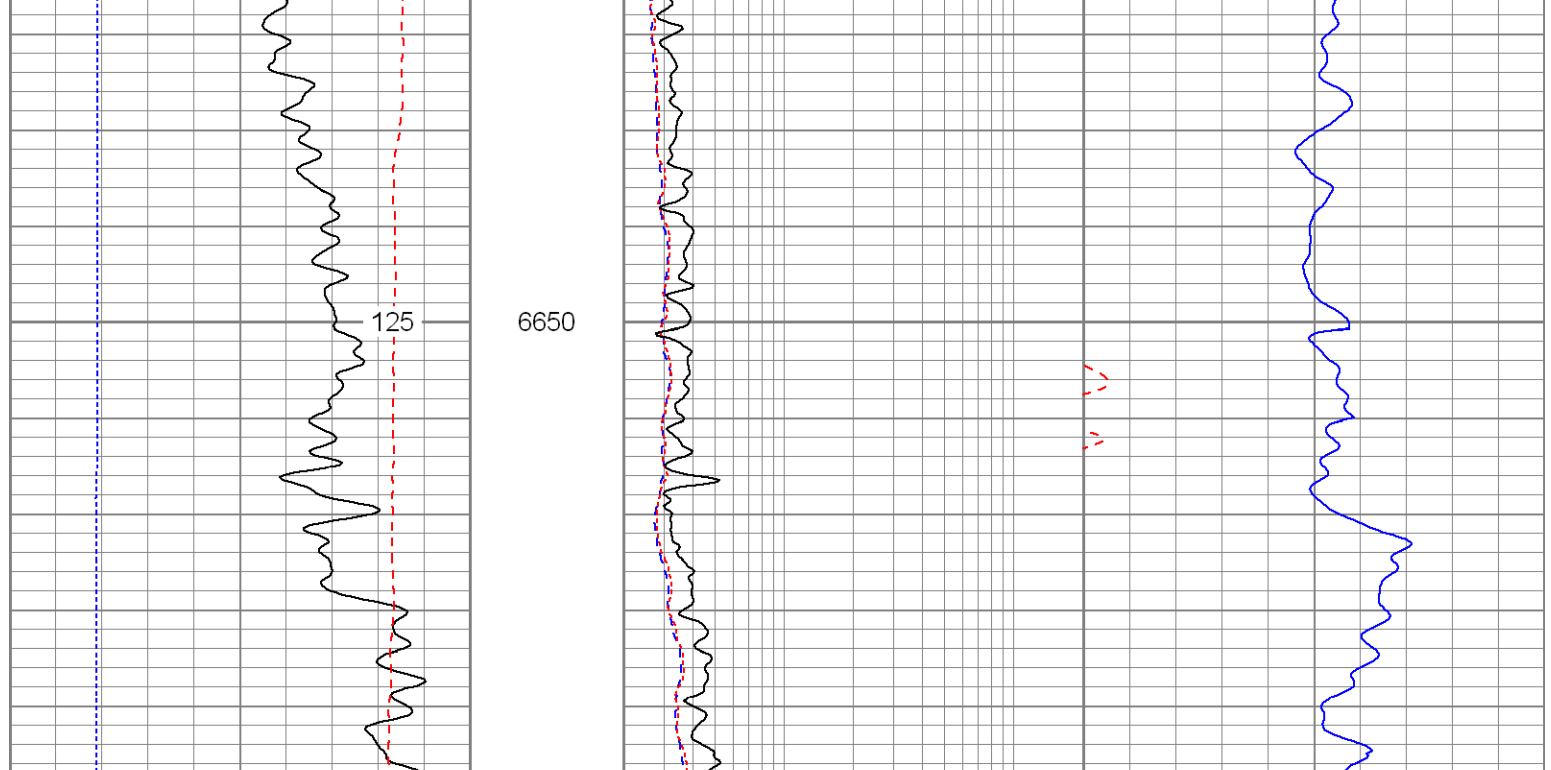
Database File: 10912.db  
Dataset Pathname: main  
Presentation Format: pdc1  
Dataset Creation: Tue Sep 07 11:09:21 2010  
Charted by: Depth in Feet scaled 1.240



Database File: 10912.db  
Dataset Pathname: main  
Presentation Format: pdc1  
Dataset Creation: Tue Sep 07 11:09:21 2010  
Charted by: Depth in Feet scaled 1.240



Database File: 10912.db  
Dataset Pathname: main  
Presentation Format: pdc1  
Dataset Creation: Tue Sep 07 11:09:21 2010  
Charted by: Depth in Feet scaled 1.240



Database File: 10912.db  
Dataset Pathname: main  
Presentation Format: pdc1  
Dataset Creation: Tue Sep 07 11:09:21 2010  
Charted by: Depth in Feet scaled 1.240

