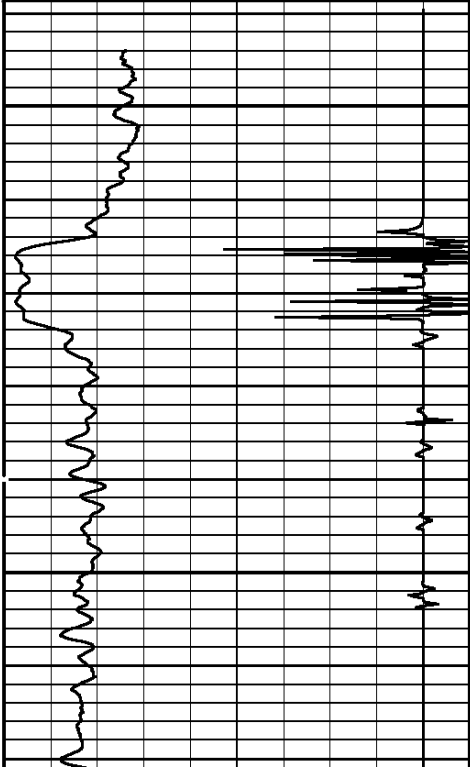

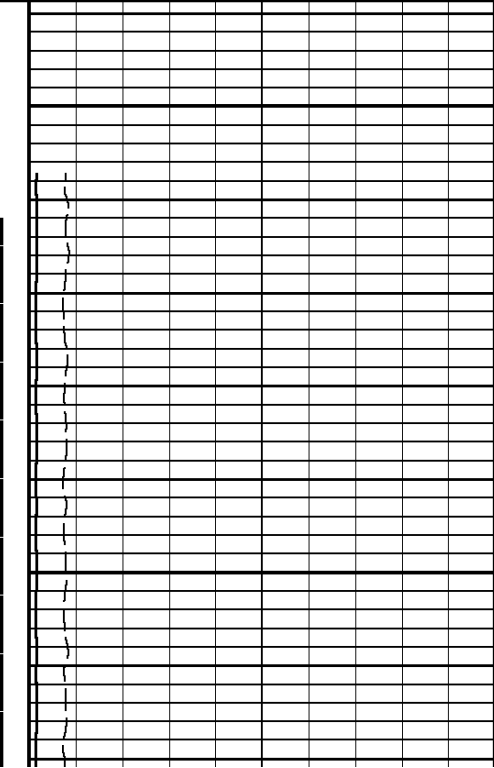


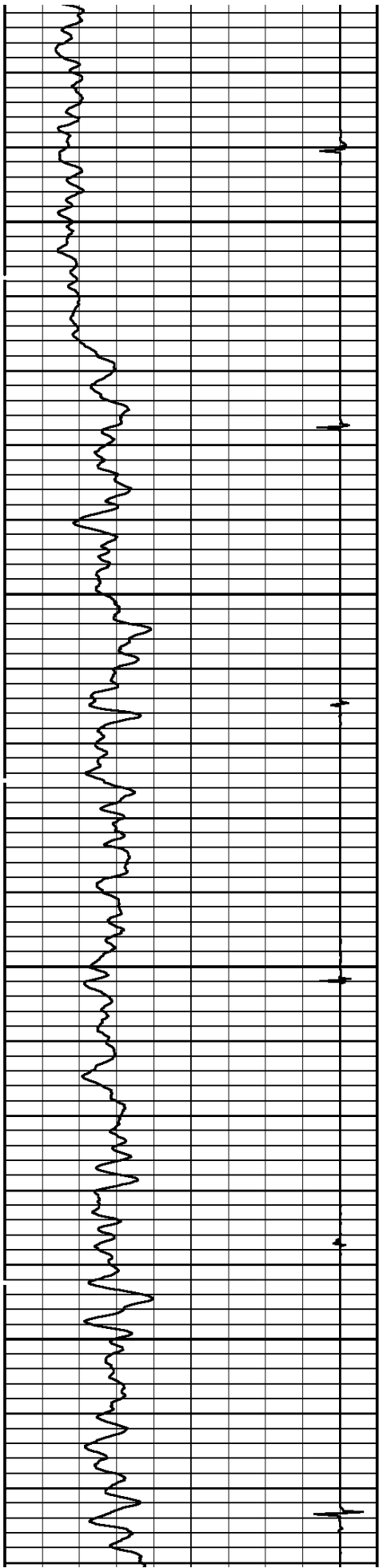
| | | | | | | | | | |
|---------------------------------------------------------------------------------------------------------------------------------------------------------------------------------------|--------------|-------|-------|------------|------|--------|----|--|--|
| COMPANY SG INTERESTS I. LTD WELL VOLK 12-89-21 # 1 FIELD COAL BASIN EXT COUNTY GUNNISON STATE CO | | | | | | | | | |
| COMPANY SG INTERESTS I. LTD WELL VOLK 12-89-21 # 1 FIELD COAL BASIN EXT COUNTY GUNNISON STATE COLORADO | | | | | | | | | |
| LOCATION: SHL: 2438' FWL & 1491' FNL BHL: 2441' FWL & 1991' FNL SEC 21 TWP 12S RGE89W | | | | | | | | | |
| OTHER SERVICES: | | | | | | | | | |
| PERM. DATUM GROUND LEVEL ELEV. 7338.00 LOG MEASURED FROM K.B. 22 FT. ABOVE PERMANENT DATUM ELEV.: K.B. 7360.00 DRILLING MEASURED FROM KELLY BUSHING D.F. 7359.0 G.L. 7338.00 | | | | | | | | | |
| DATE | 21-DEC-2010 | | | | | | | | |
| RUN NO. | ONE | | | | | | | | |
| DEPTH DRILLER | 3330' | | | | | | | | |
| DEPTH LOGGER | 3253' | | | | | | | | |
| BTM. LOG INTERVAL | 3247' | | | | | | | | |
| TOP LOG INTERVAL | SURF | | | | | | | | |
| OPEN HOLE SIZE | 9.625" | | | | | | | | |
| TYPE FLUID | MUD | | | | | | | | |
| DENS. | 9.3 | | | | | | | | |
| VISC. | 0.00 | | | | | | | | |
| MAX. REC. TEMP. °F | N/A | | | | | | | | |
| EST. CEMENT TOP | 920' | | | | | | | | |
| TIME WELL READY | 14:45 | | | | | | | | |
| TIME LOGGER ON BTM. | 15:58 | | | | | | | | |
| EQUIP. NO. | 14113 | | | | | | | | |
| LOCATION | G. JUNCTION | | | | | | | | |
| RECORDED BY | I. GRANADINO | | | | | | | | |
| WITNESSED BY | R. RICHARDS | | | | | | | | |
| TUBING RECORD | | | | | | | | | |
| BOREHOLE RECORD | | | | | | | | | |
| RUN NO. | BIT | FROM | TO | SIZE | WGT. | FROM | TO | | |
| | | | | | | | | | |
| | | | | | | | | | |
| | | | | | | | | | |
| | | | | | | | | | |
| | | | | | | | | | |
| CASING RECORD | SIZE | WT/FT | GRADE | TYPE JOINT | TOP | BOTTOM | | | |
| SURFACE STRING | | | | | | | | | |
| PROD. STRING | | | | | | | | | |
| PROD. STRING | 5.5 | 17# | | | SURF | 3330? | | | |
| LINER | | | | | | | | | |

All interpretations of log data are opinions based on inferences from electrical or other measurements. We do not guarantee the accuracy or correctness of any interpretation or recommendation and we shall not be liable or responsible for any loss, cost, damages or expenses incurred or sustained by anyone resulting from any interpretation or recommendation made by any of our employees or agents.

| | | | | | |
|---------------------------------------------------------------------------------|---------|----------------|-----------|------------------------|-------|
| REMARKS | | Rig: MESA 202 | | Service Order # 176806 | |
| LOG WAS CORRELATED TO SWS PLATFORM EXPRESS DATED 03-DEC-2010 | | | | | |
| LOGGED W/O PSI. @ SURFACE | | | | | |
| TAGGED TD @ 3253' | | | | | |
| THANK YOU FOR CHOOSING WEATHERFORD WIRELINE SRV. GRD.JUNCTION.CO. (970)263-8501 | | | | | |
| | | EQUIPMENT DATA | | | |
| Bit Size | 9.625 | Run No. | Tool Type | Tool No. | Other |
| Well Status | | ONE | CENA | 403 | |
| Surface Pressure | | ONE | CTBA | 322 | |
| Shut In | Flowing | ONE | GRBA | 322 | |
| 0 PSI. | | ONE | CENB | 258 | |
| | | ONE | SBTA | 342 | |
| | | ONE | CENA | 222 | |
| | | | | | |
| | | | | | |

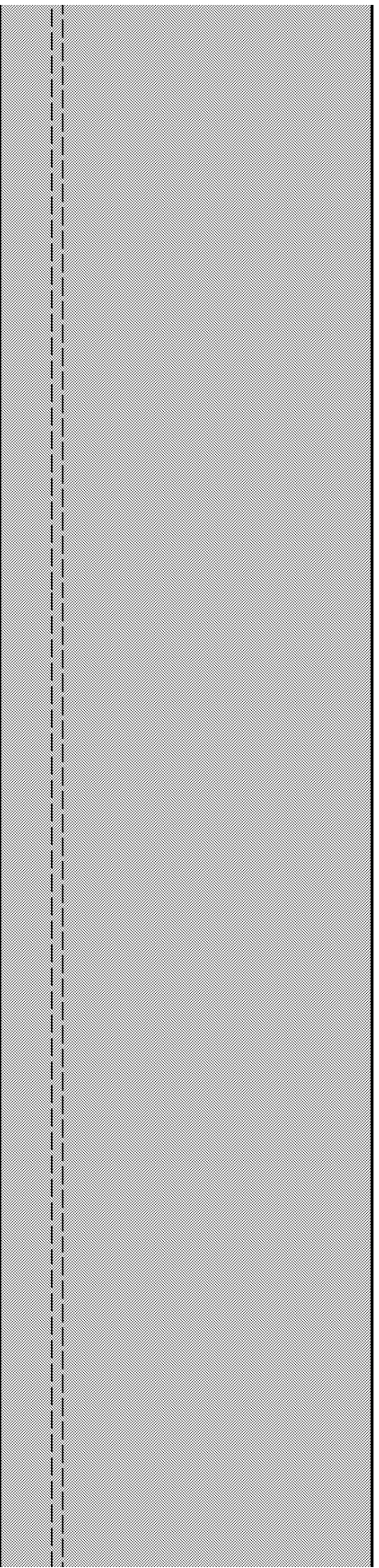
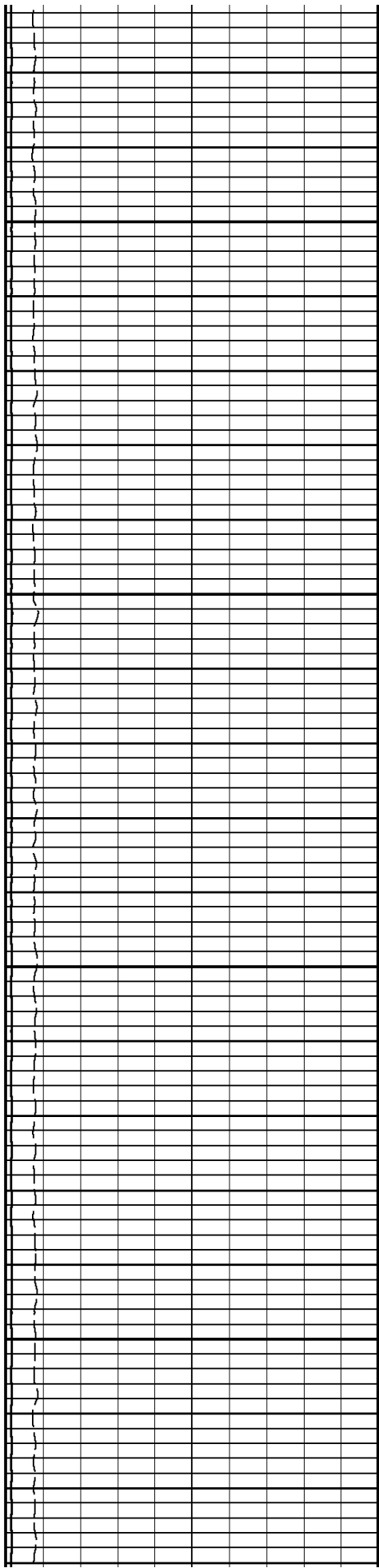
| | | | | | |
|--|--|--|--|--|--|
| | | | | | |
| | | | | | |
| | | | | | |
| | | | | | |

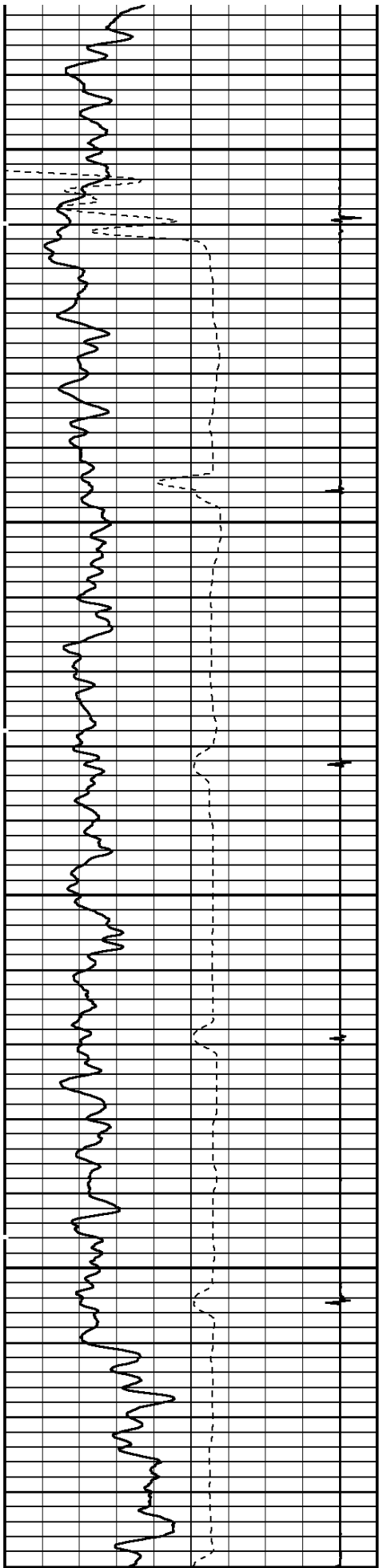
| | | | | | | | | | |
|---------------------------------------------------------------------------------------------------------------------------------|--|--|------------------------------------------------------------------------------------------------------------------------------------------------------|--|---------------------|--|----------------------------------------------------------------------------------------------------------------------------------------|--|--|
| <div style="text-align: center;">REMARKS</div> <div style="text-align: center; margin-top: 20px;">MAIN PASS</div> | | | | | | | | | |
| DEPTH SCALE: 5":100' | | | | | VERSION: 143R 2.0b" | | | | |
| <div style="text-align: center;">MAIN PASS</div> | | | | | | | | | |
| <div style="text-align: center;">176806 CBLMP</div> | | | | | | | | | |
| FINISH DEPTH: -11.5 Feet DIRECTION: UP DATE: 12/21/2010 TIME: 16:55 MODE: TRACE PLAYBACK | | | | | | | | | |
| Collar Locator | | | | | | | FREE PIPE GATE | | |
| <div style="display: flex; justify-content: space-between;"> -1000 Millivolts 110 </div> | | | | | | | <div style="display: flex; justify-content: space-between;"> 200 Microseconds 1200 </div> | | |
| Gamma Ray | | | AMPLITUDE 3FT X5 | | | | FREE PIPE GATE | | |
| <div style="display: flex; justify-content: space-between;"> 0 API 150 </div> | | | <div style="display: flex; justify-content: space-between;"> 0 Millivolts 20 </div> | | | | <div style="display: flex; justify-content: space-between;"> 200.00 Microseconds 1200.00 </div> | | |
| TRAVEL TIME 3FT | | | Tension | | | | AMPLITUDE 3FT | | |
| <div style="display: flex; justify-content: space-between;"> 305 Microseconds 205 </div> | | | <div style="display: flex; justify-content: space-between;"> 0 1000 0 </div> | | | | <div style="display: flex; justify-content: space-between;"> 0 Millivolts 100 </div> | | |
|  | | | <div style="text-align: center; vertical-align: middle;">0</div>  | | | |  | | |
| | | | | | | | | | |



100

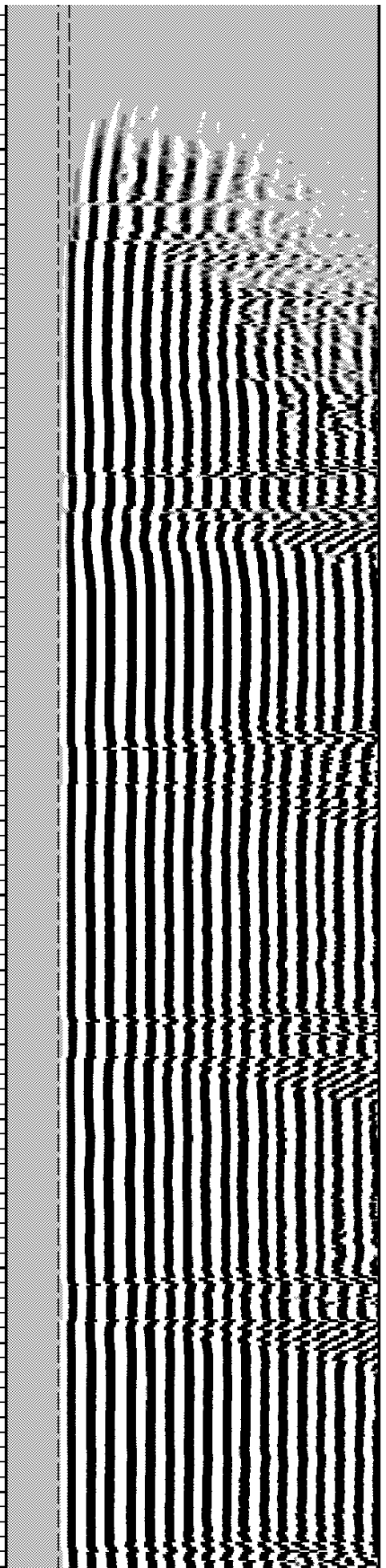
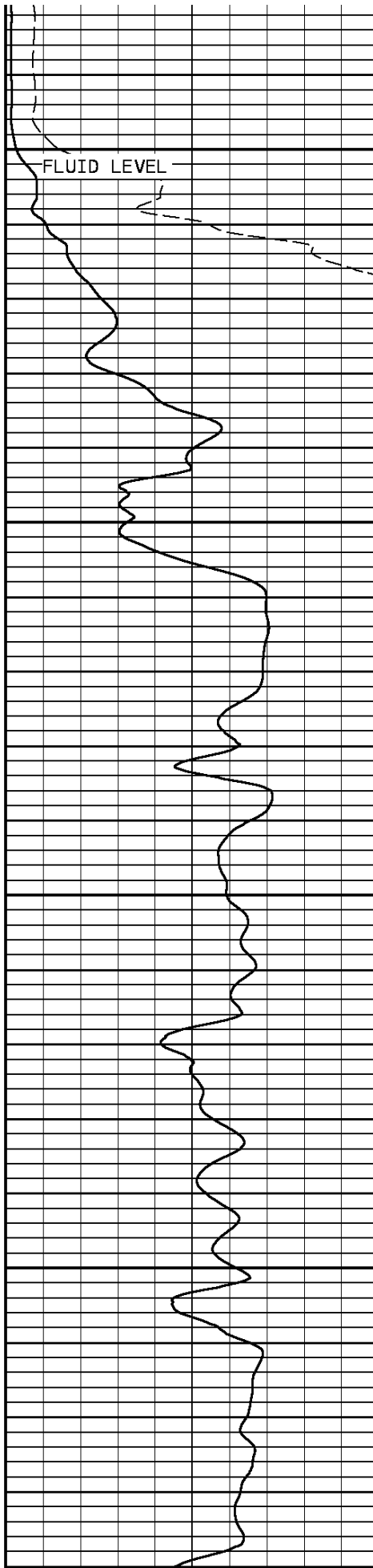
200

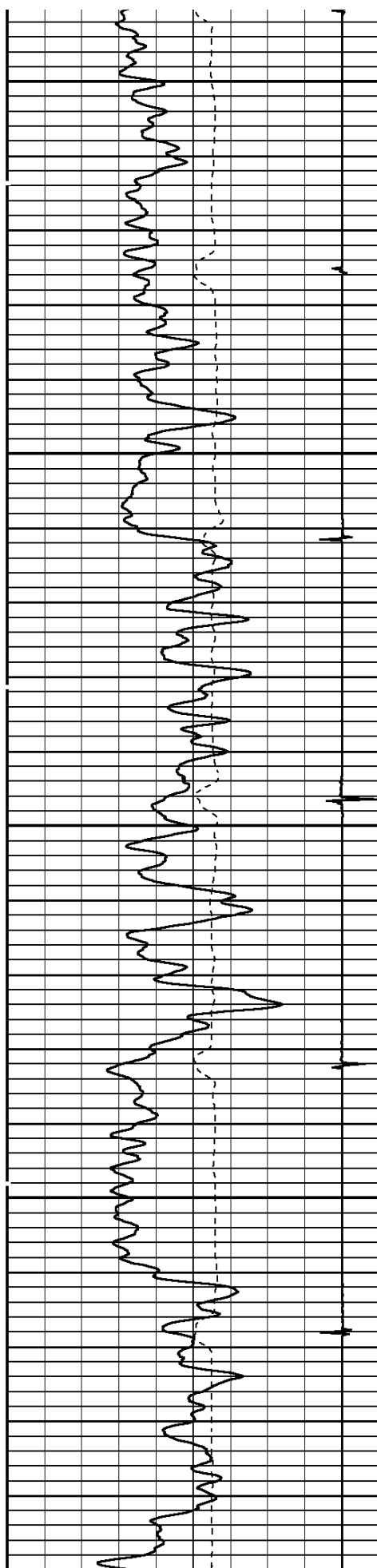




300

400

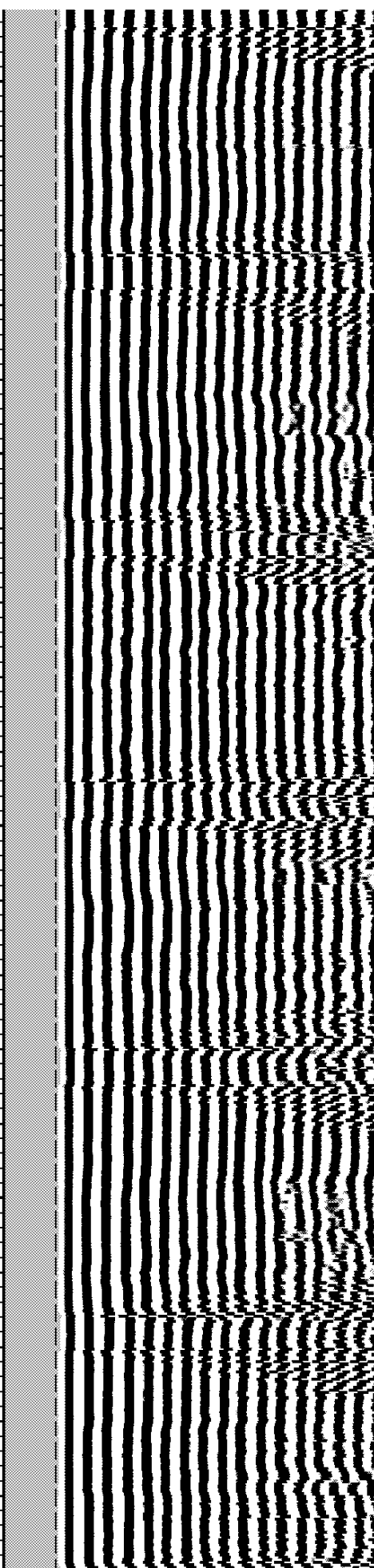
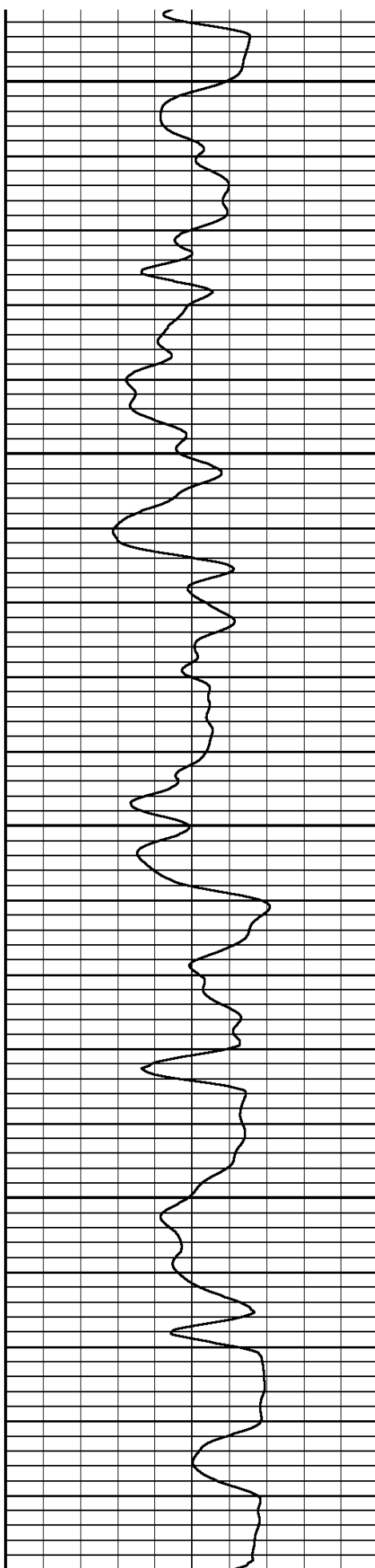


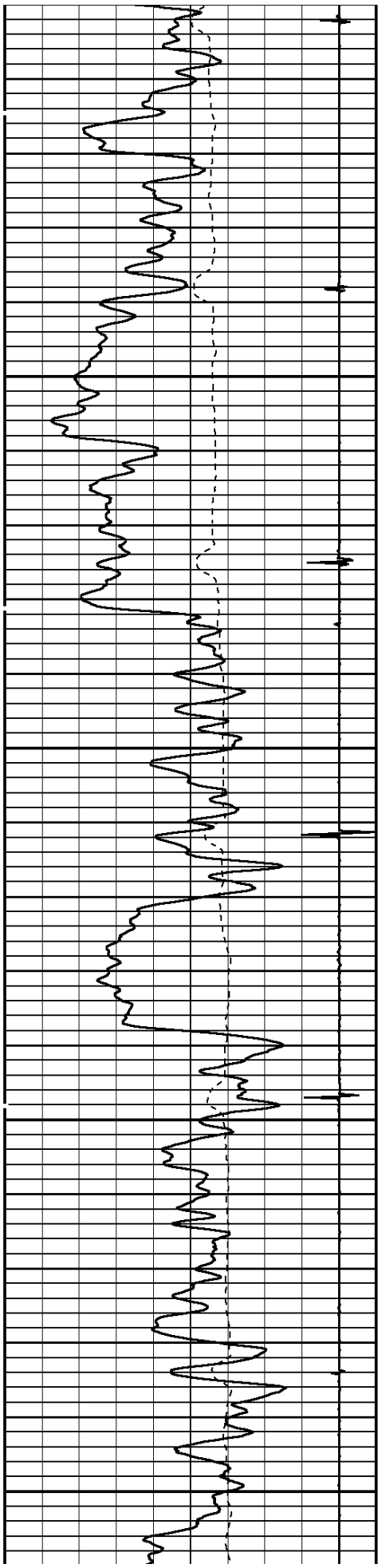


500

600

700

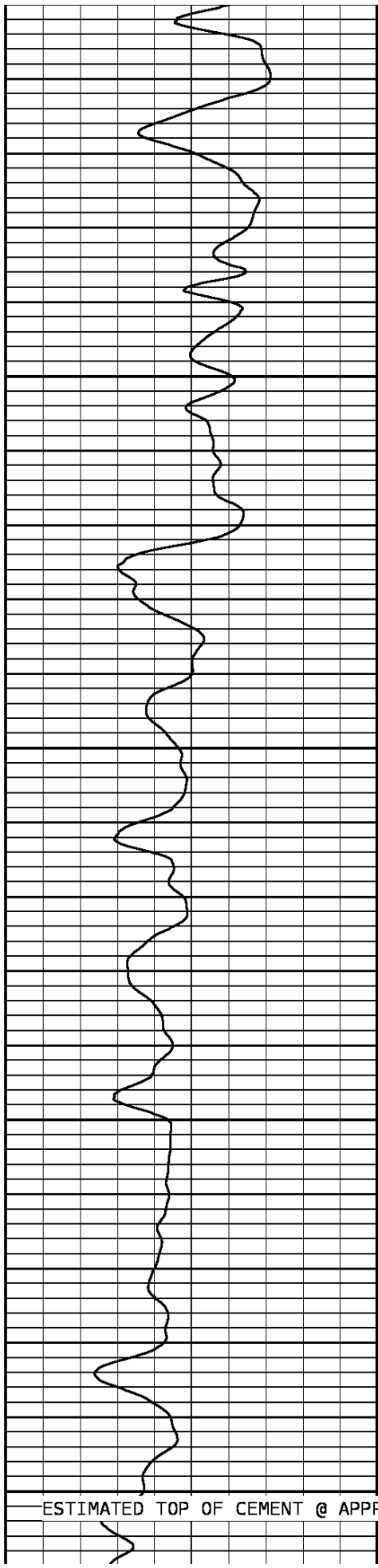




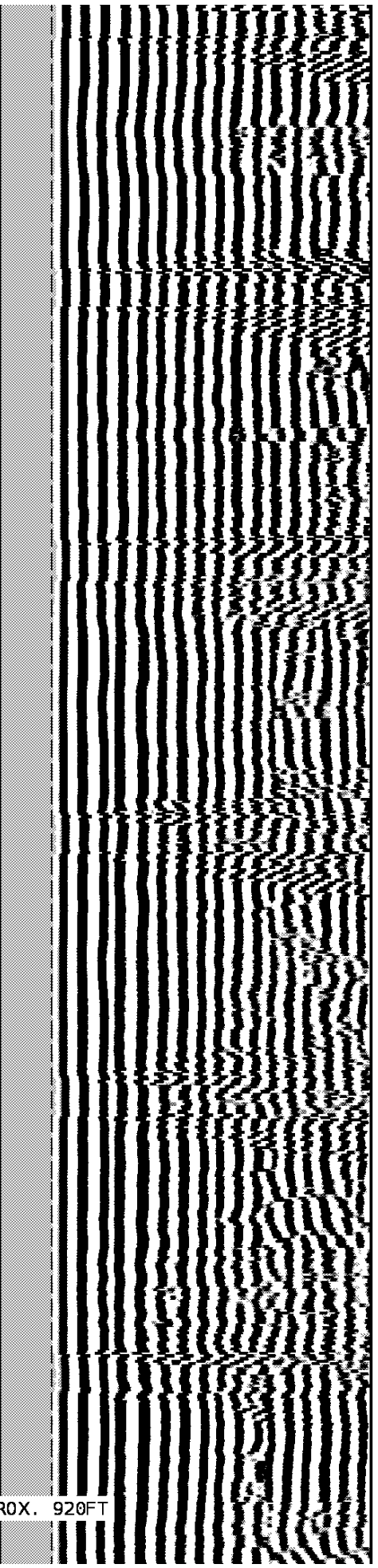
700

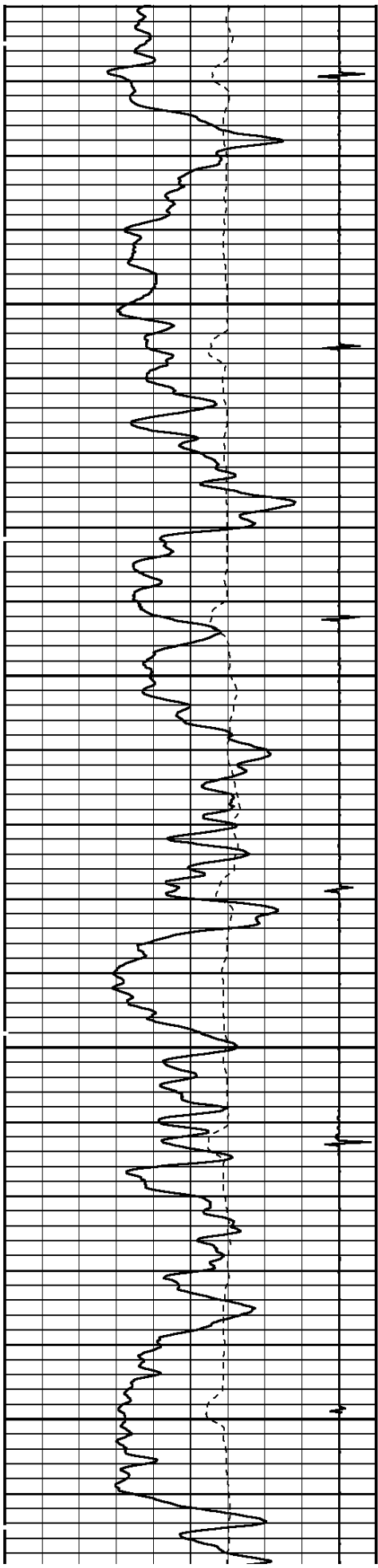
800

900



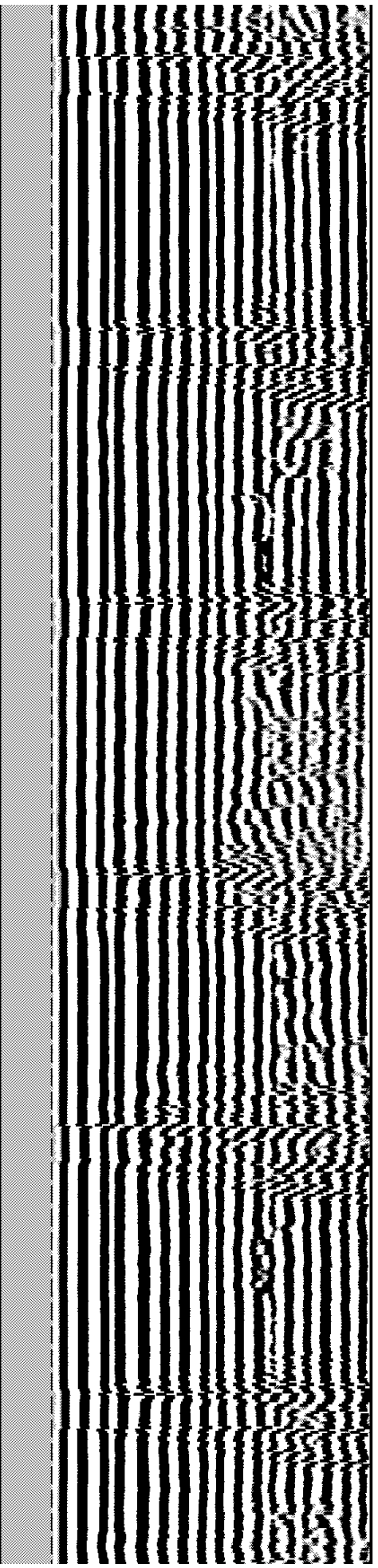
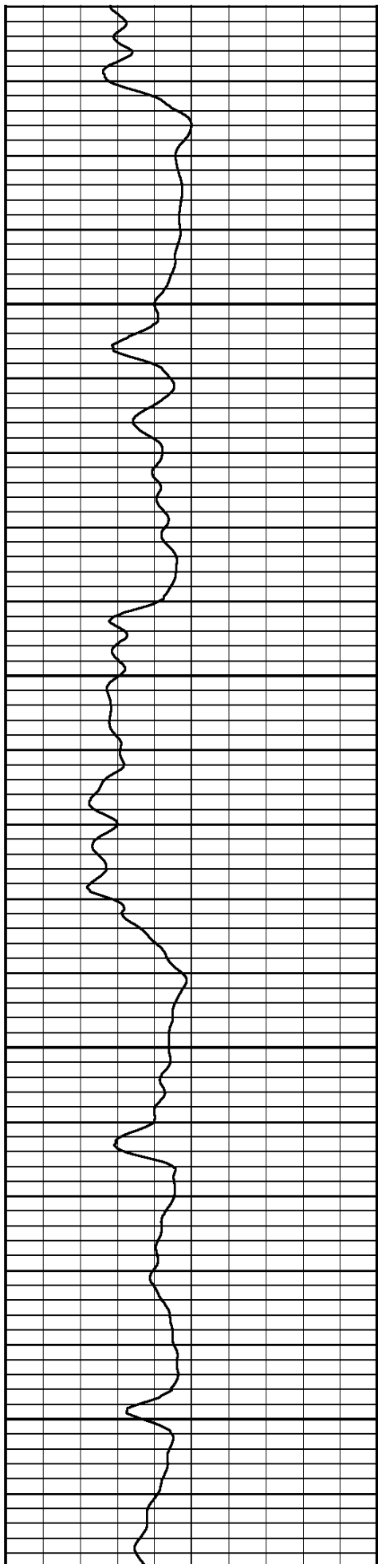
ESTIMATED TOP OF CEMENT @ APPROX. 920FT

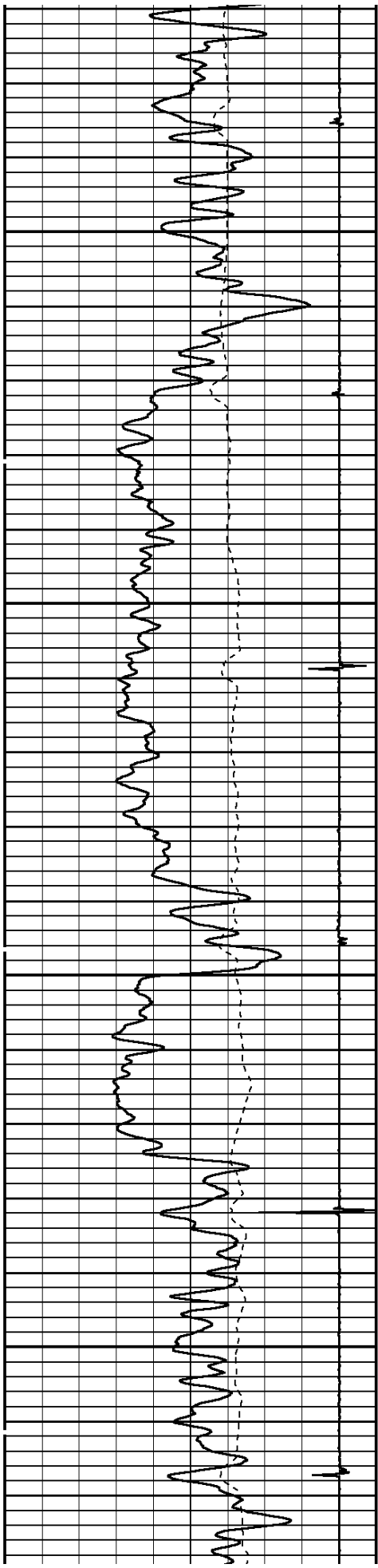




1000

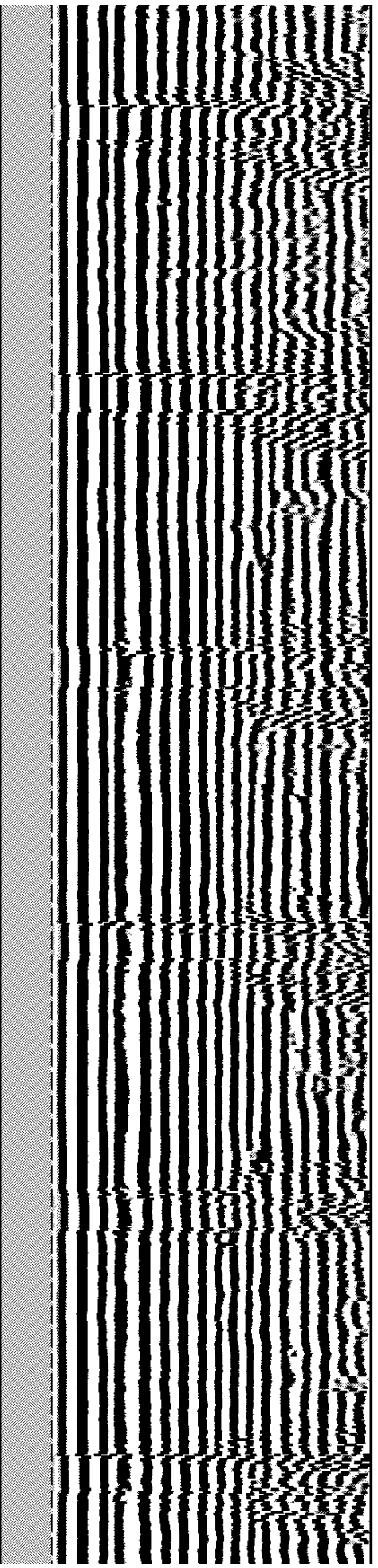
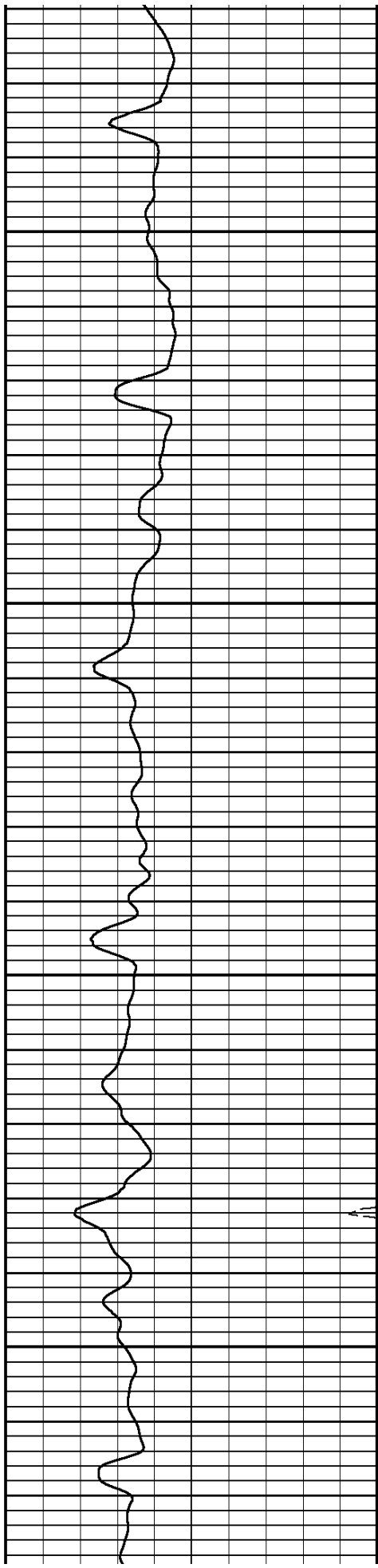
1100

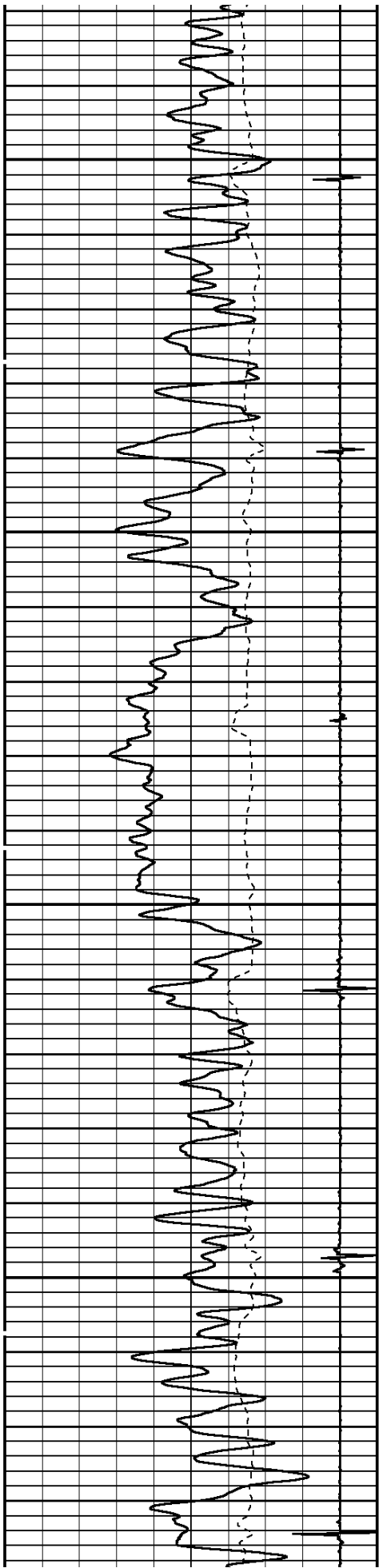




1200

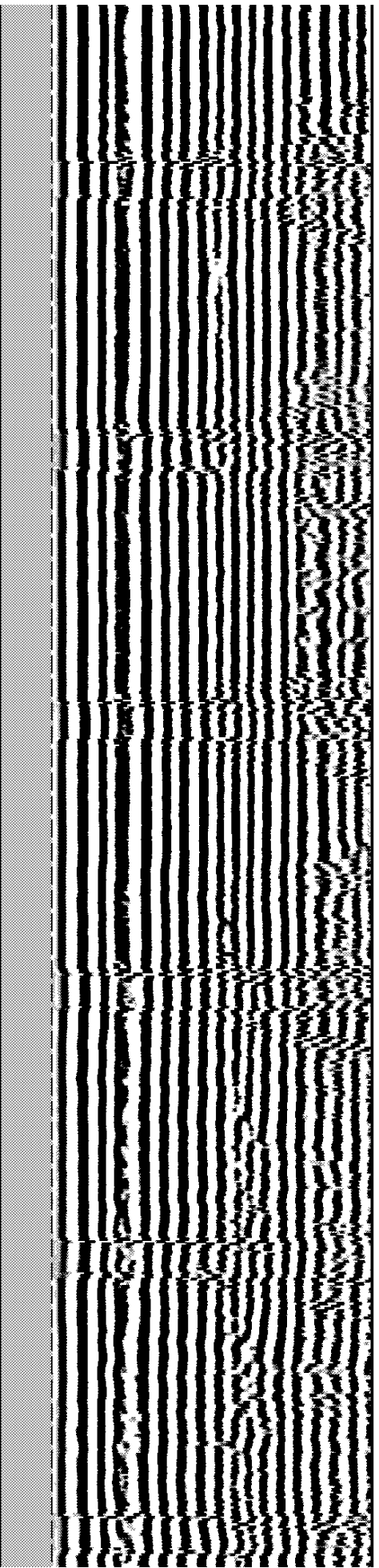
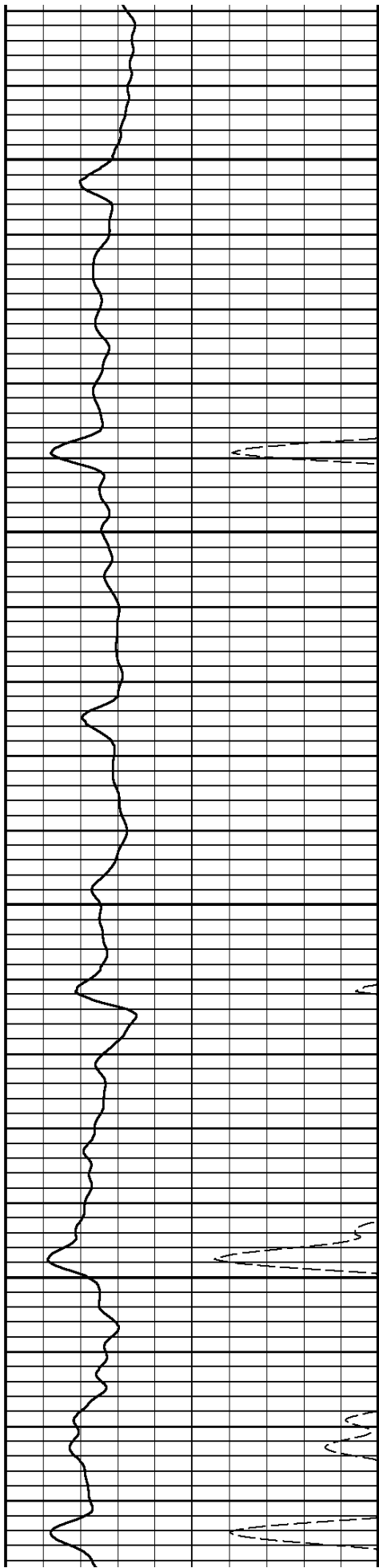
1300

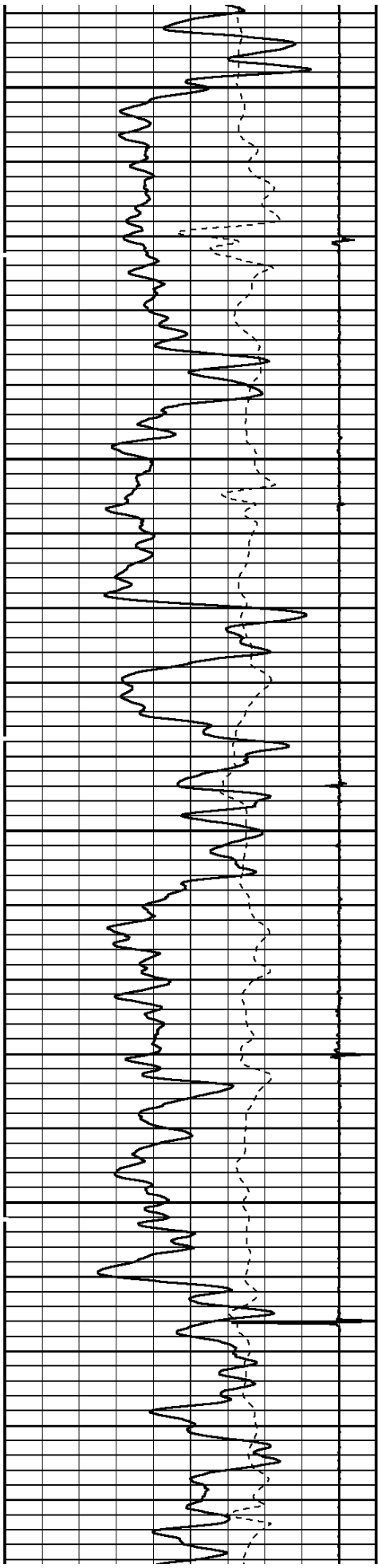




1400

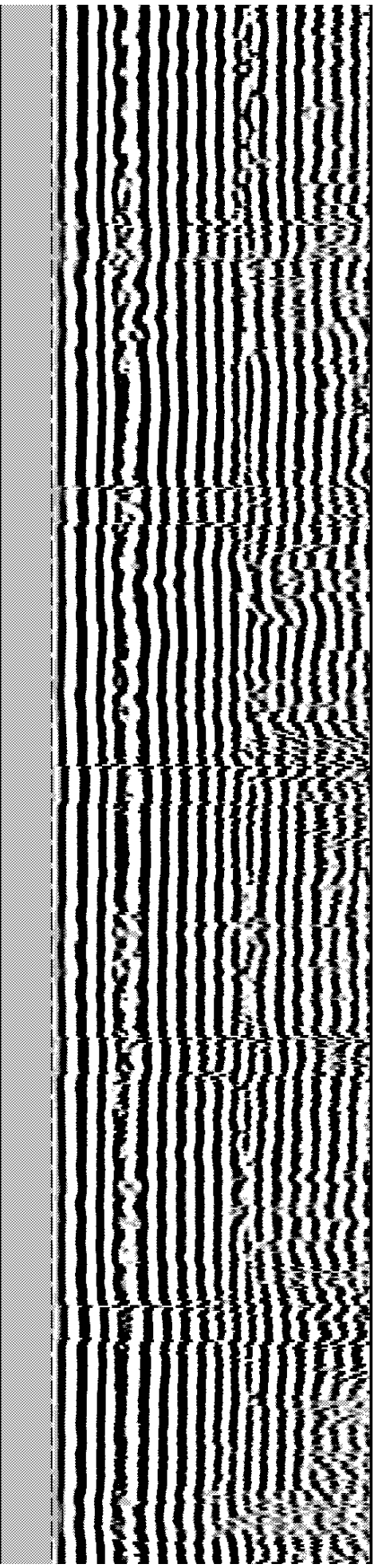
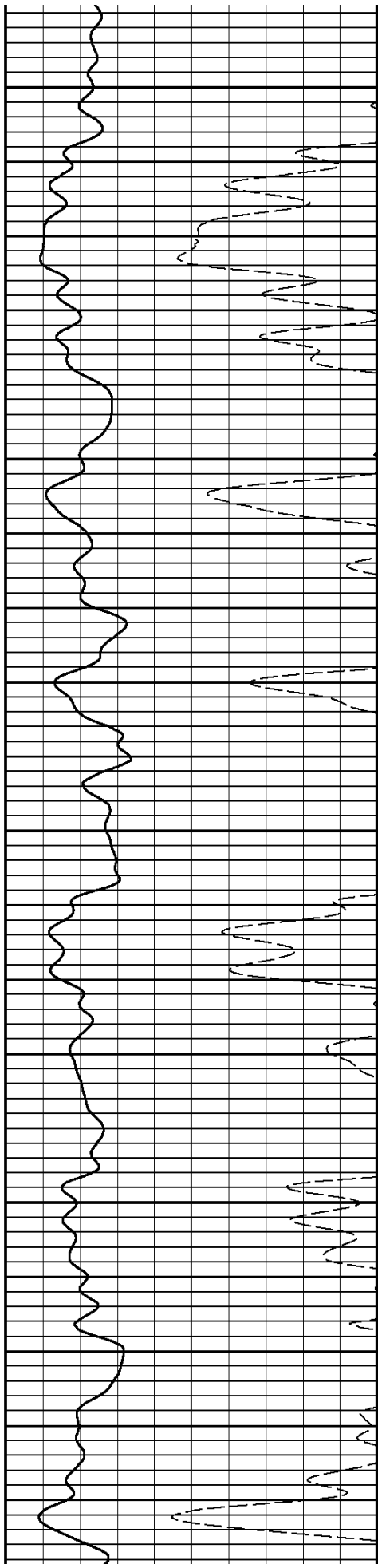
1500

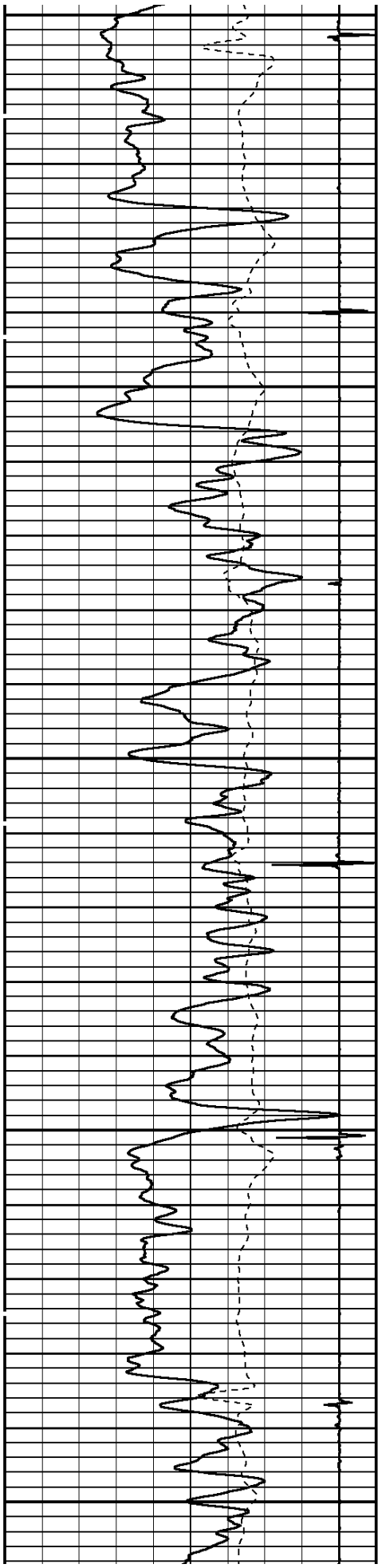




1600

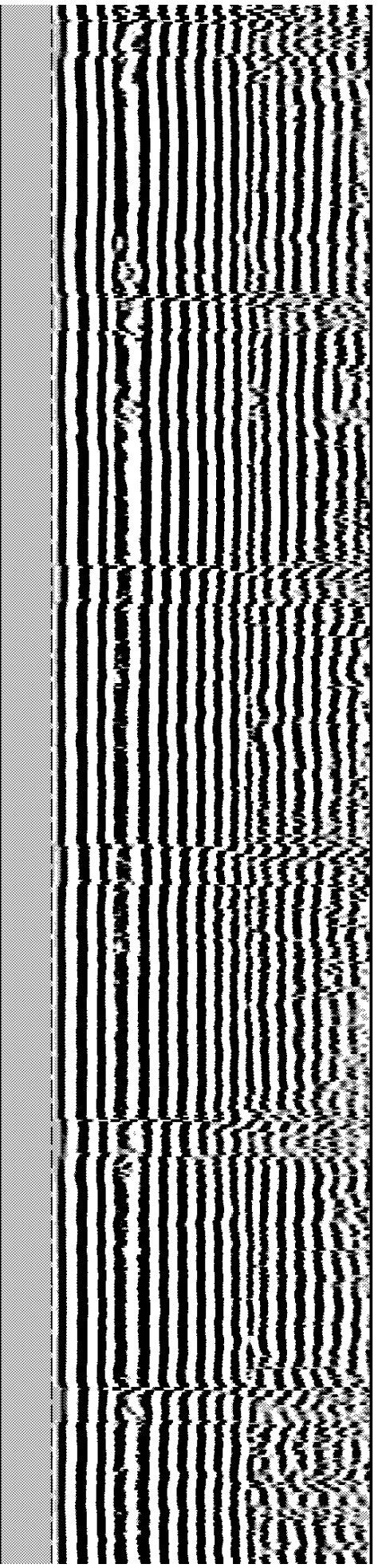
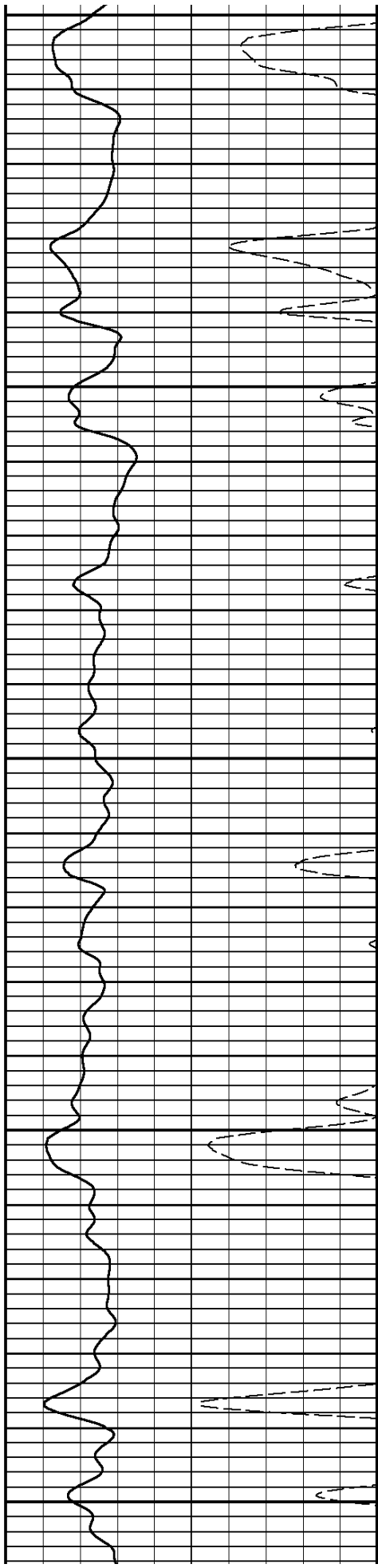
1700

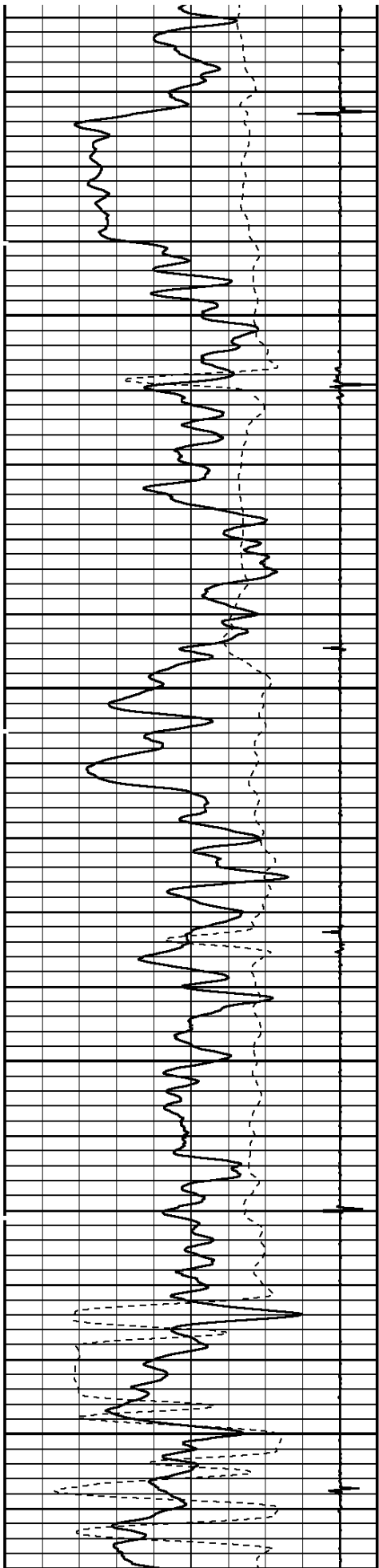




1800

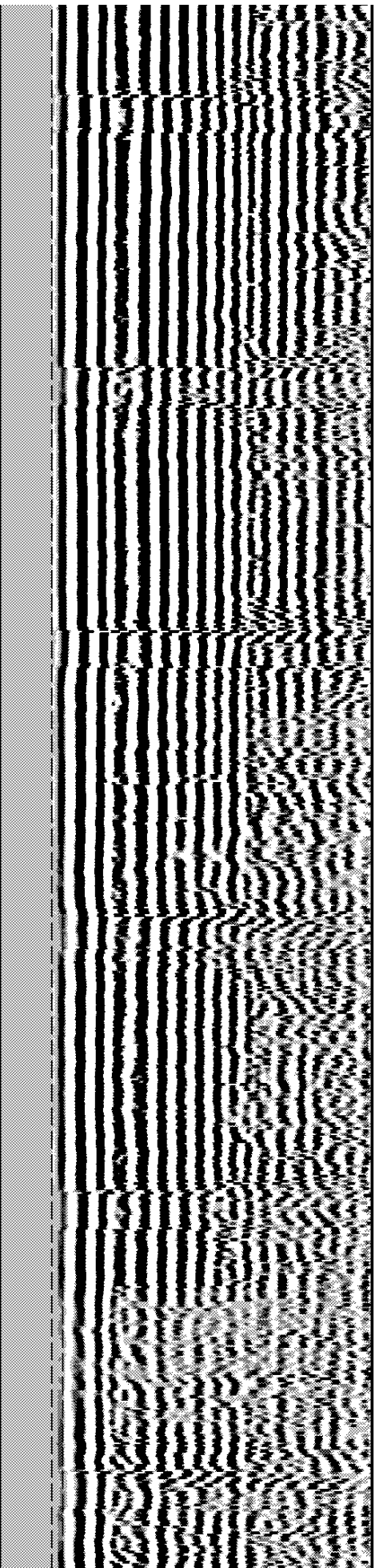
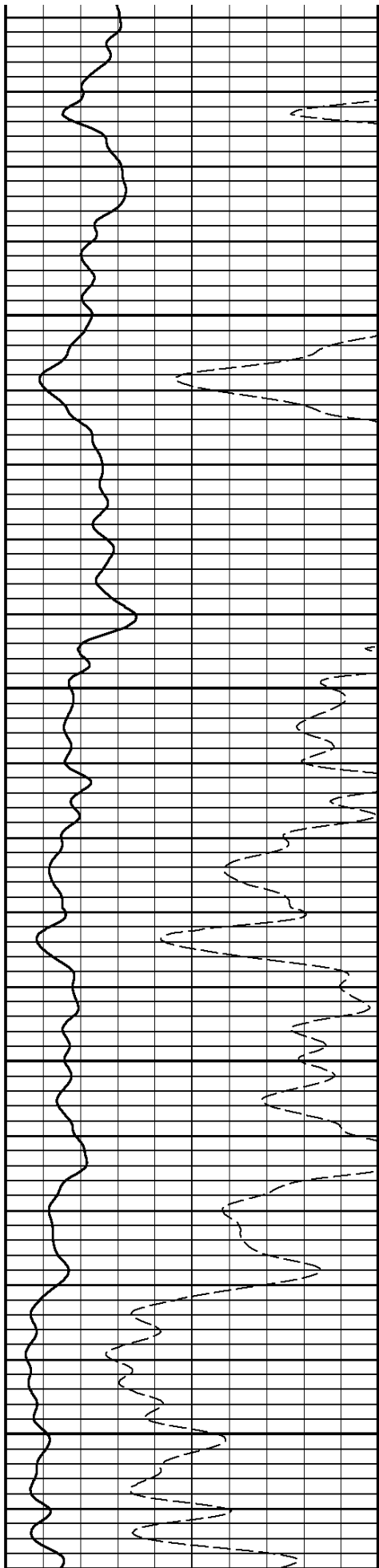
1900

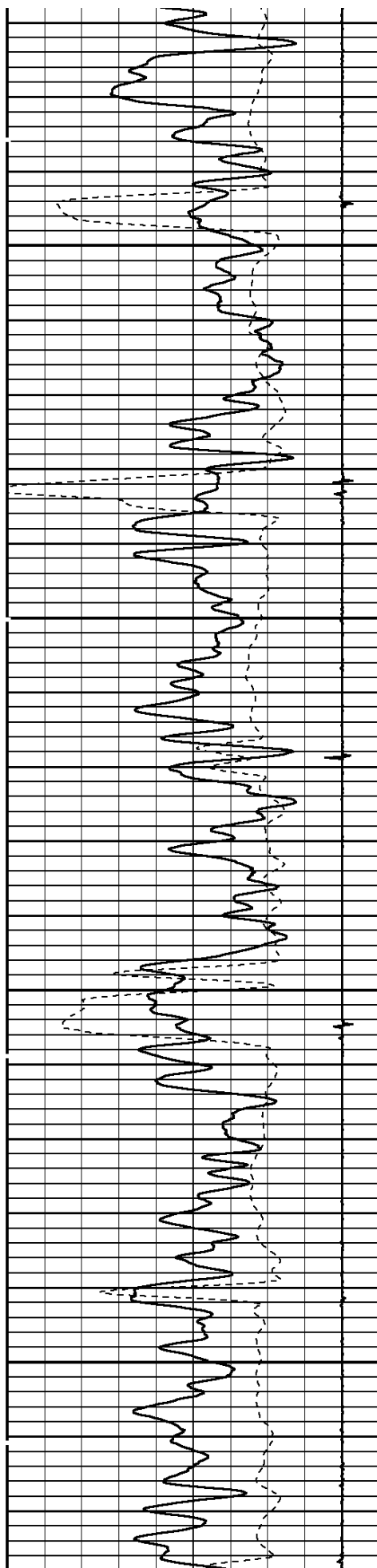




2000

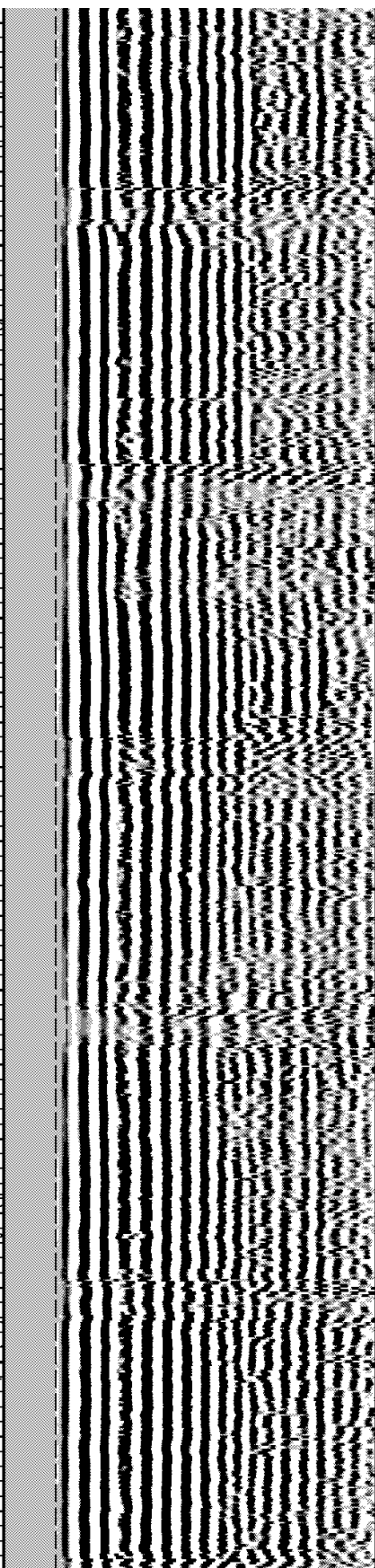
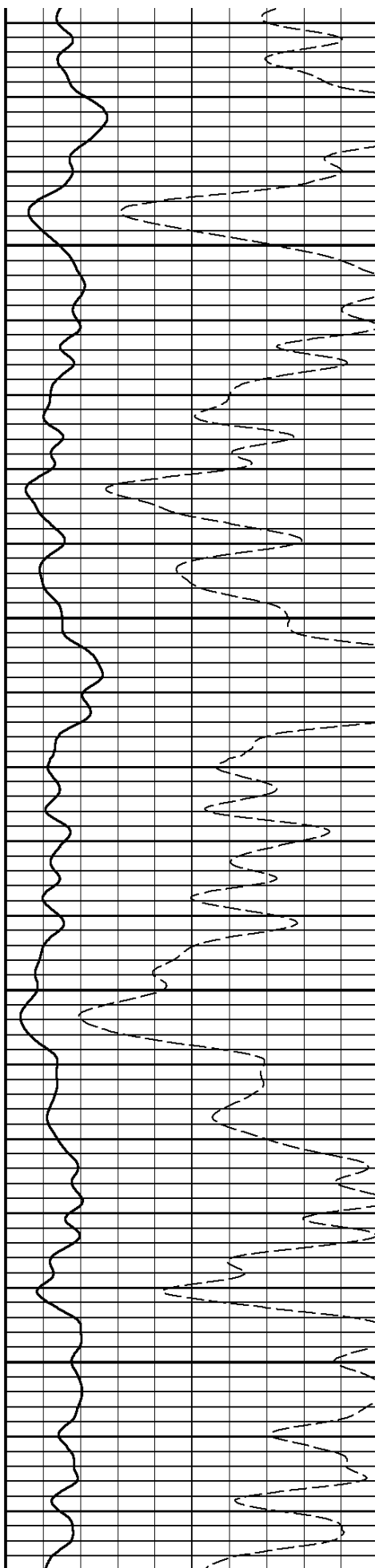
2100

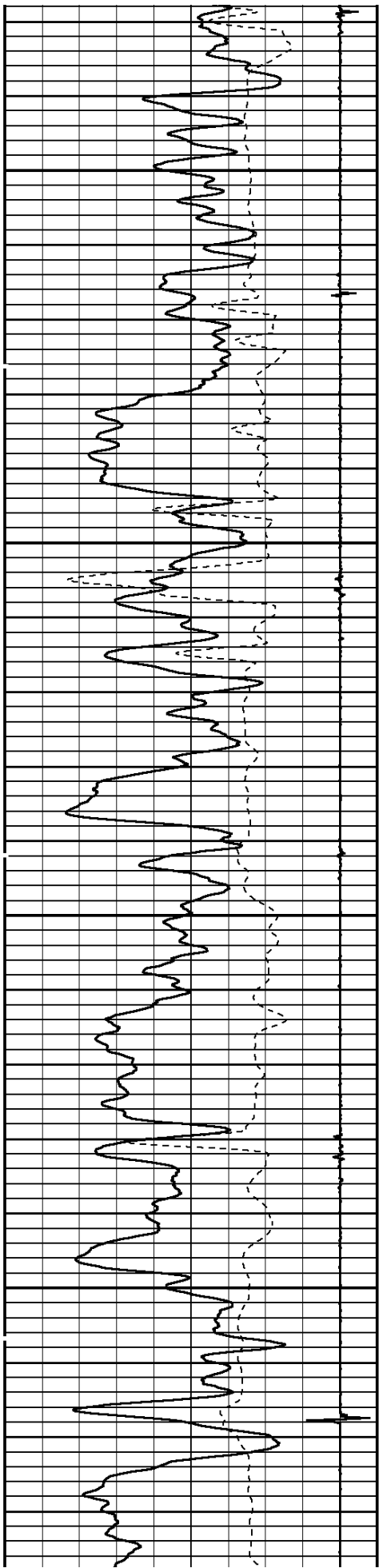




2200

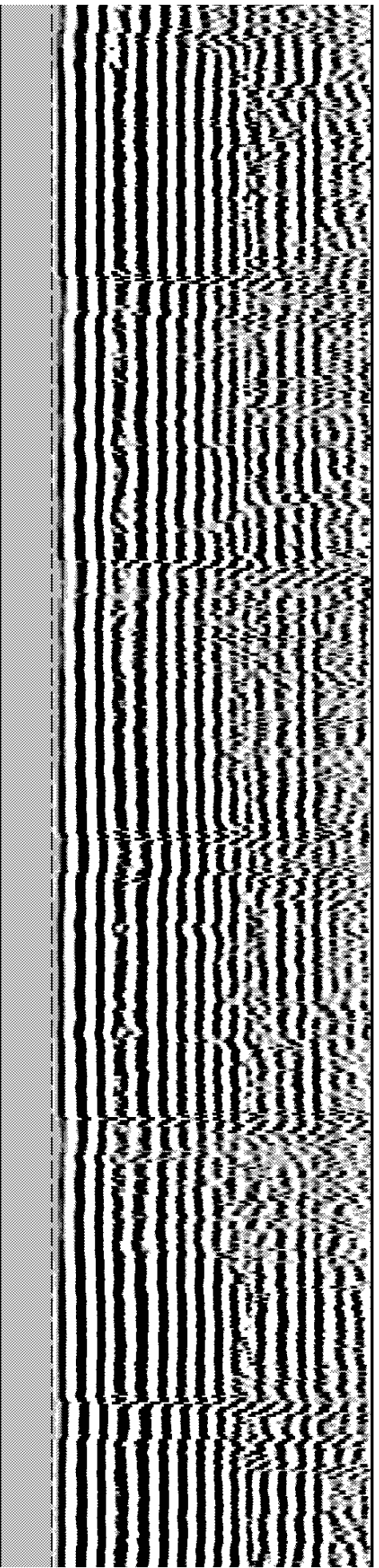
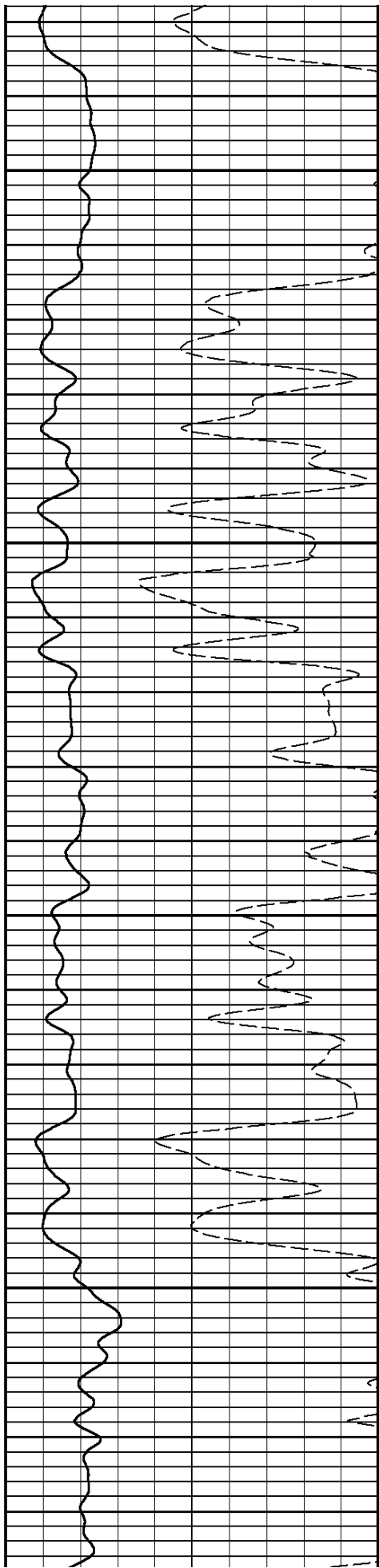
2300

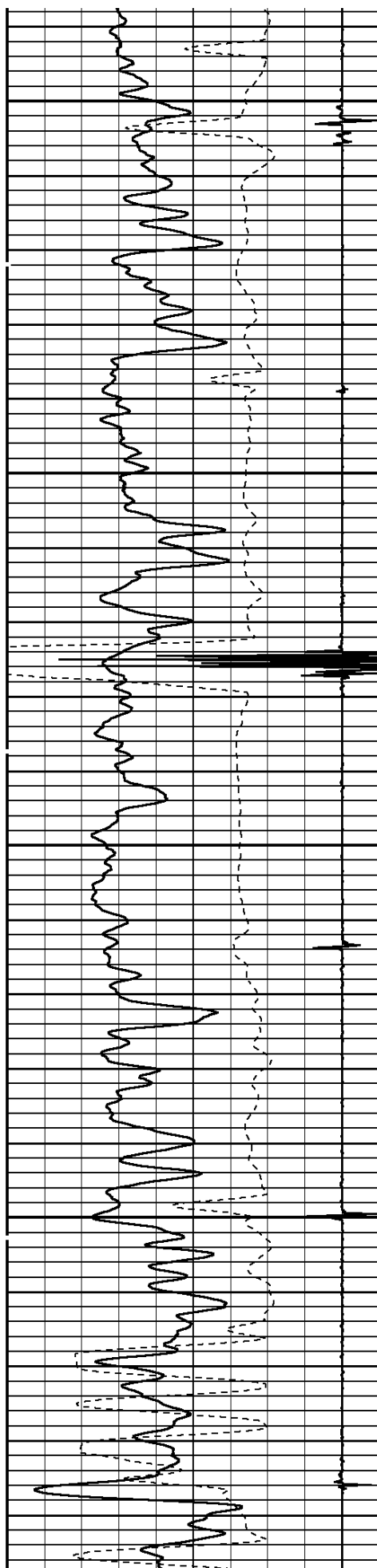




2400

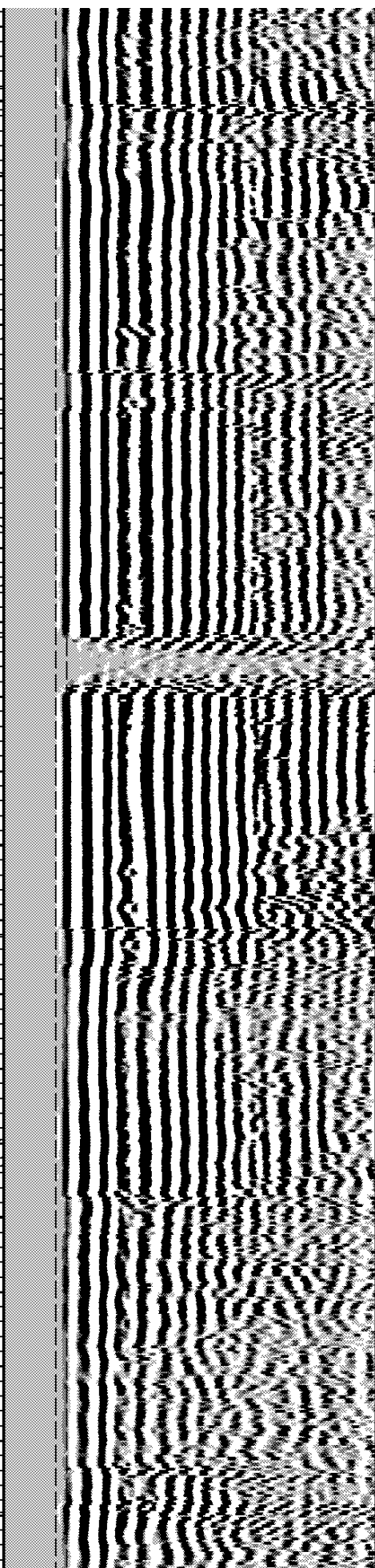
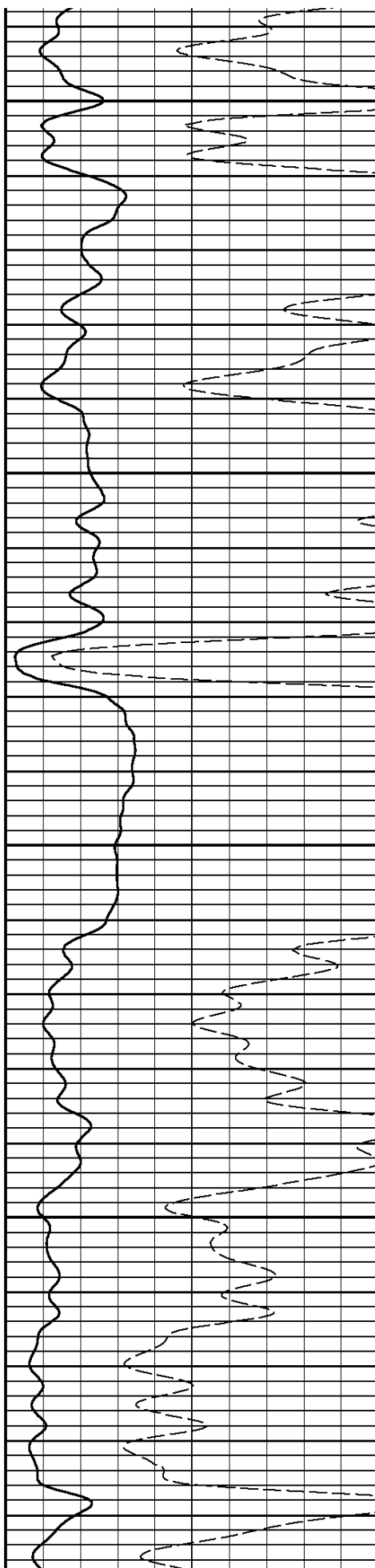
2500





2600

2700

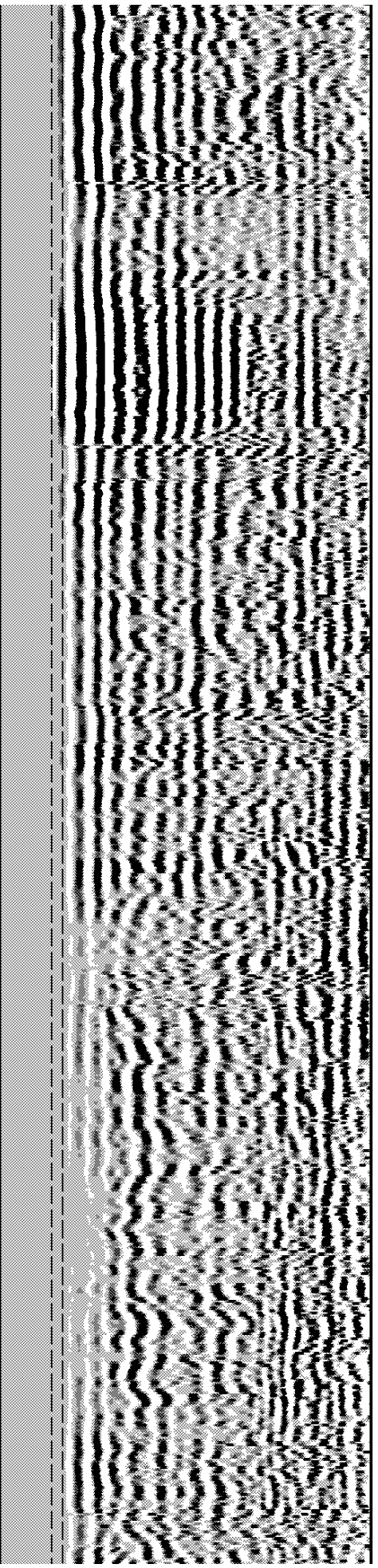
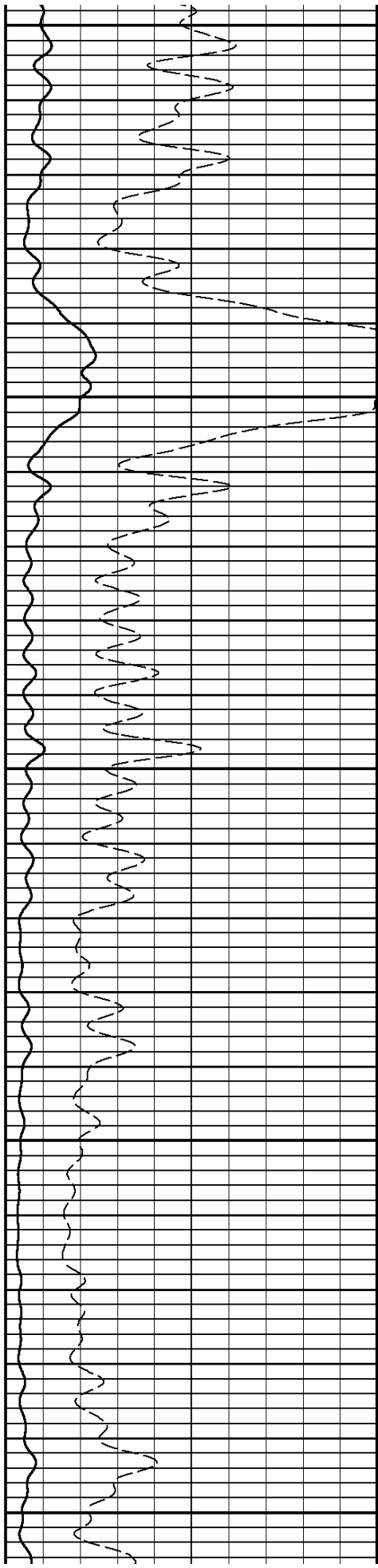


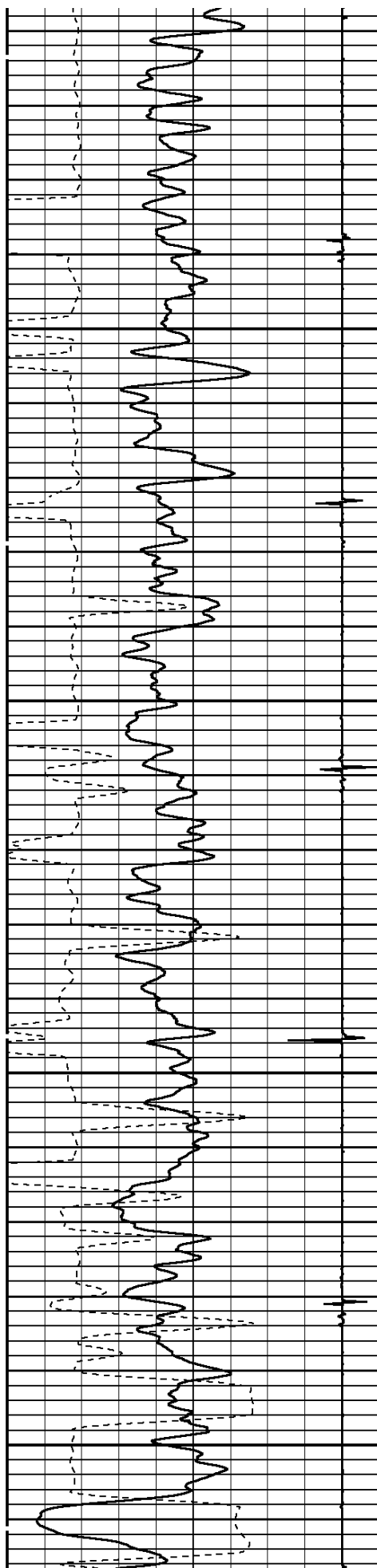


2800

2900

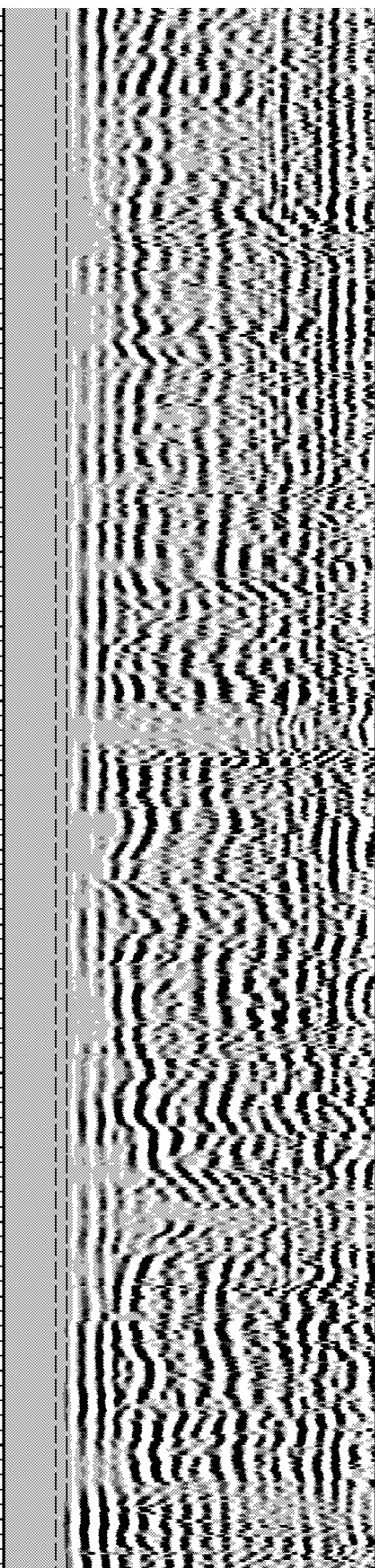
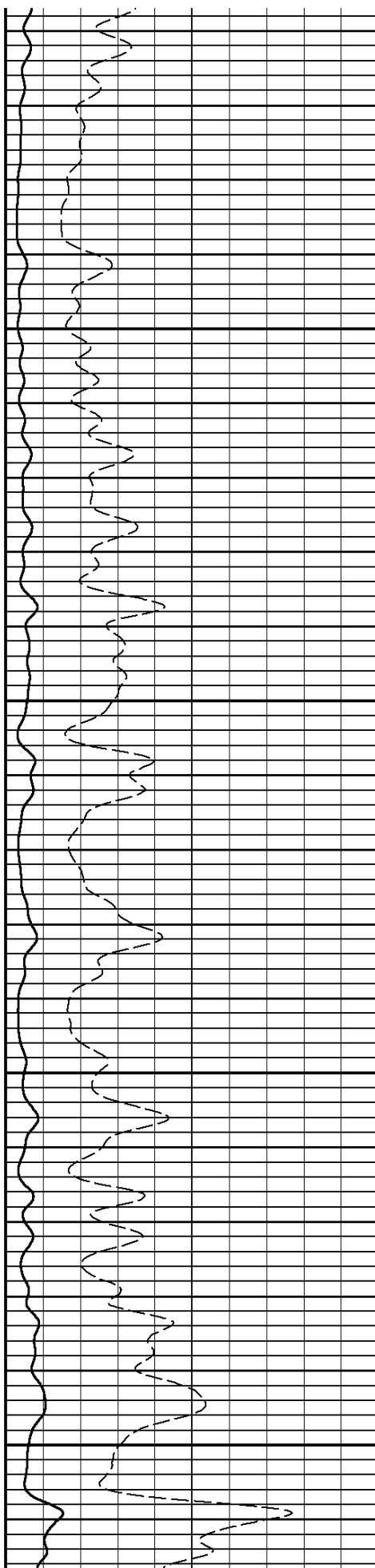
3000

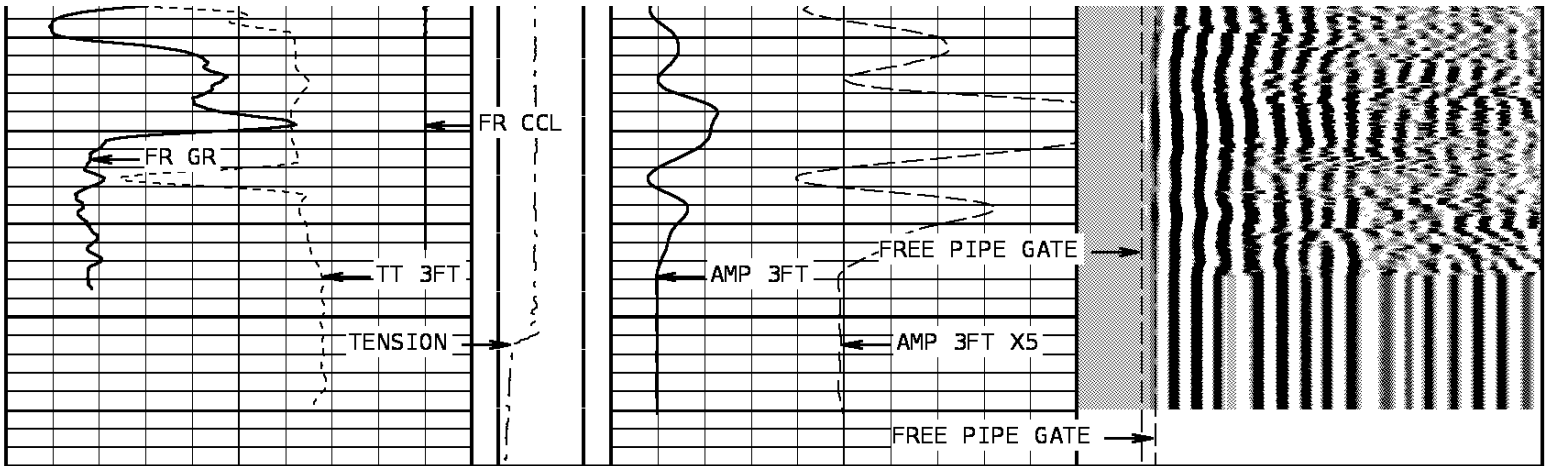




3100

3200





| TRAVEL TIME 3FT | | | Tension | | AMPLITUDE 3FT | | VARIABLE DENSITY 5FT | | | | | |
|-----------------|--------------|-----|---------|--|------------------|------------|----------------------|--------------|--------------|---------|--------------|------|
| 305 | Microseconds | 205 | | | 0 | 1000 | 0 | Millivolts | 100 | 200 | Microseconds | 1200 |
| Gamma Ray | | | | | AMPLITUDE 3FT X5 | | FREE PIPE GATE | | | | | |
| 0 | API | 150 | | | 0 | Millivolts | 20 | 200.00 | Microseconds | 1200.00 | | |
| Collar Locator | | | | | | | FREE PIPE GATE | | | | | |
| -1000 | Millivolts | 110 | | | | | 200 | Microseconds | 1200 | | | |

START DEPTH: 3266.1 DIRECTION: UP DATE: 12/21/2010 TIME: 16:55 MODE: TRACE PLAYBACK

176806 CBLMP

MAIN PASS

DEPTH SCALE: 5":100' VERSION: 143R 2.0b"

REMARKS

REPEAT PASS

DEPTH SCALE: 5":100' VERSION: 143R 2.0b"

REPEAT PASS

176806 CBLRP

FINISH DEPTH: 2920.1 Feet DIRECTION: UP DATE: 12/21/2010 TIME: 16:33 MODE: TRACE PLAYBACK

Collar Locator

FREE PIPE GATE

-1500 Millivolts 150

Gamma Ray

0 API 150

TRAVEL TIME 3FT

305 Microseconds 205

Tension

0 2000

AMPLITUDE 3FT X5

0 Millivolts 20

AMPLITUDE 3FT

0 Millivolts 100

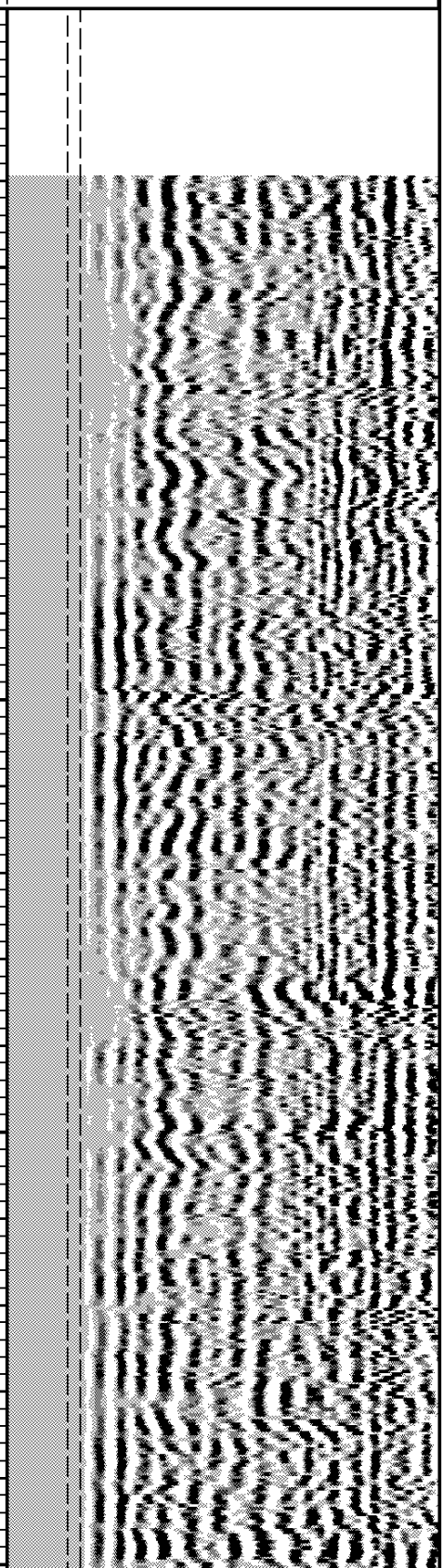
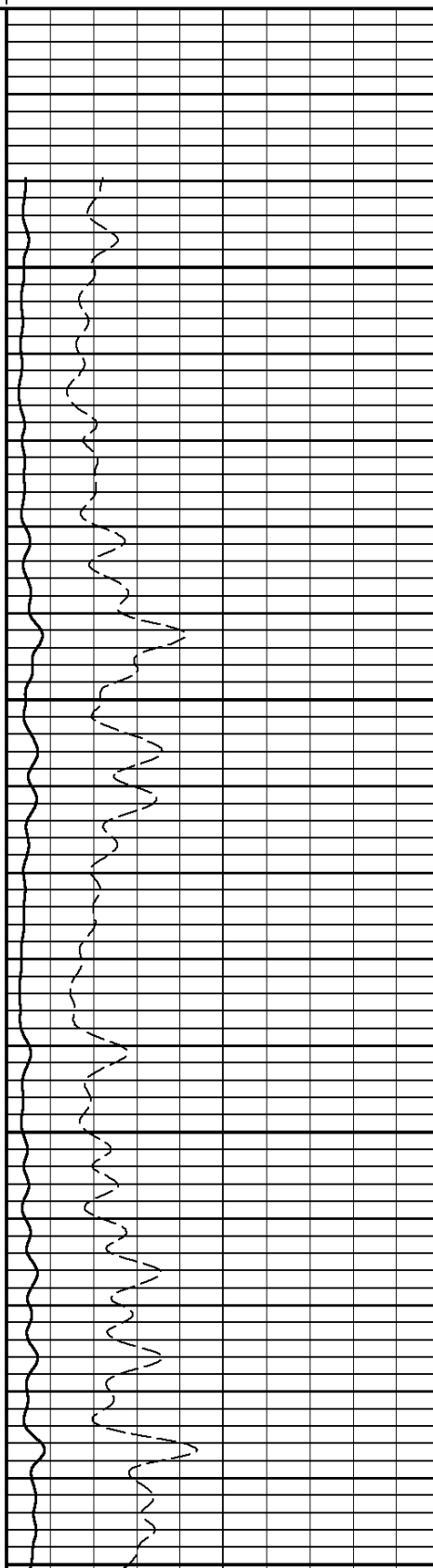
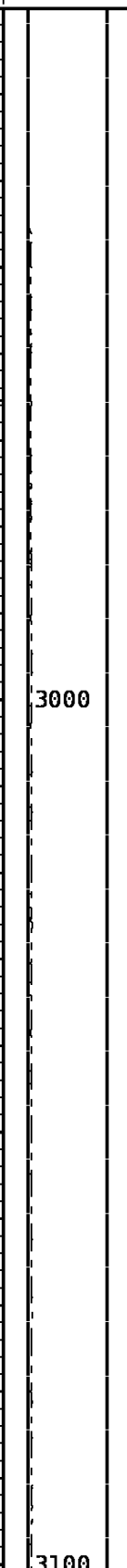
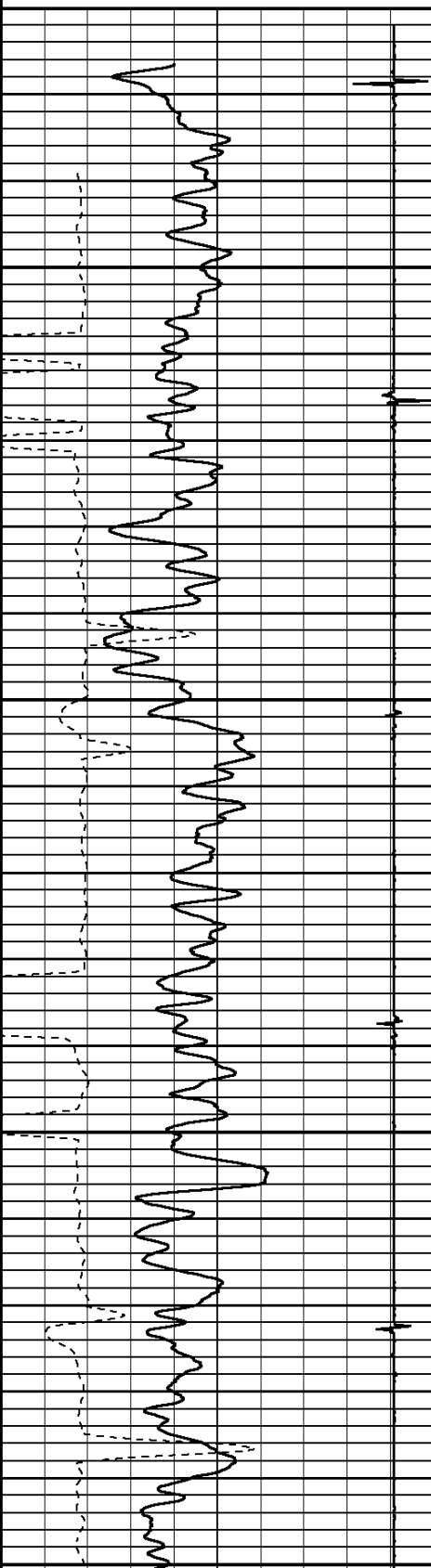
200 Microseconds 1200

FREE PIPE GATE

200.00 Microseconds 1200.00

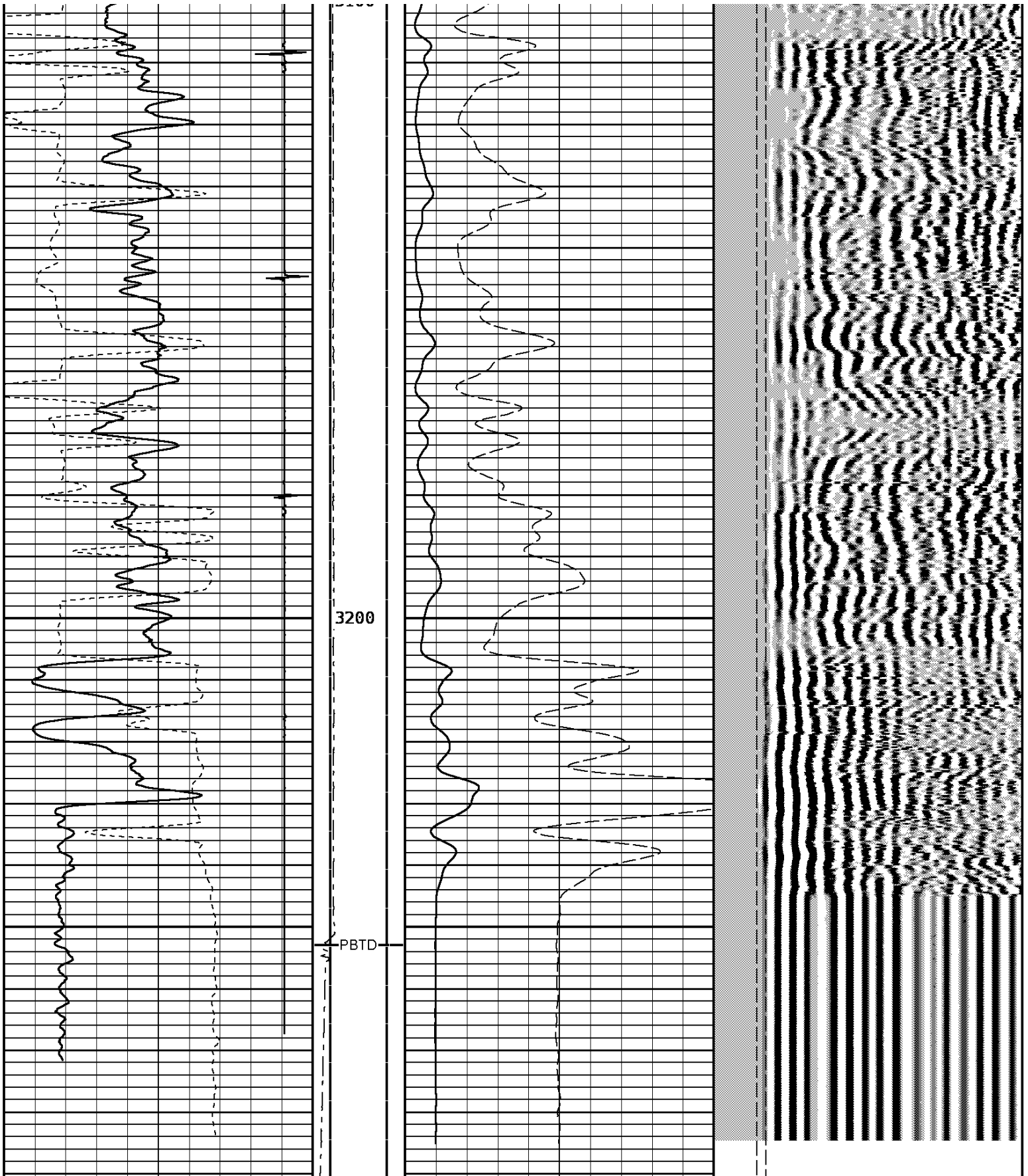
VARIABLE DENSITY 5FT

200 Microseconds 1200



3000

3100



| | | | | | | | |
|-----------------|--------------|---------|--------|------------------|-----|----------------------|-------------------|
| TRAVEL TIME 3FT | | Tension | | AMPLITUDE 3FT | | VARIABLE DENSITY 5FT | |
| 305 | Microseconds | 205 | 0 2000 | 0 | 100 | 200 | Microseconds 1200 |
| Gamma Ray | | | | AMPLITUDE 3FT X5 | | FREE PIPE GATE | |

| | | | | | | | | |
|-------------------------------------------------------------------------------------------------|------------|-----|---|------------|----|---------------------|--------------|---------|
| 0 | API | 150 | 0 | Millivolts | 20 | 200.00 | Microseconds | 1200.00 |
| Collar Locator | | | | | | FREE PIPE GATE | | |
| -1500 | Millivolts | 150 | | | | 200 | Microseconds | 1200 |
| START DEPTH: 3290.8 DIRECTION: UP DATE: 12/21/2010 TIME: 16:33 MODE: TRACE PLAYBACK | | | | | | | | |
| 176806 CBLRP | | | | | | | | |
| REPEAT PASS | | | | | | | | |
| DEPTH SCALE: 5":100' | | | | | | VERSION: 143R 2.0b" | | |

| | | | | |
|---------------------------------------------------------------------|-------------|-----------|-----------|--|
| 12/21/10 15:33 748.0 F Ver 143R 2.0b Job 176806 | | | | |
| Sector Bond Before Calibration | | | | |
| Tool Type | SBT-AA | Serial No | sbta34245 | |
| Sensor | Description | Standard | Measured | |
| AMP 3FT | ZERO | 1.00 | 20.31 | |
| | PLUS | 72.00 | 998.06 | |
| AMP 5FT | ZERO | 0.00 | 20.51 | |
| | PLUS | 100.00 | 1456.27 | |
| 1 SECTOR AMP | ZERO | 5.00 | 85.48 | |
| | PLUS | 95.00 | 290.92 | |
| 2 SECTOR AMP | ZERO | 5.00 | 508.80 | |
| | PLUS | 95.00 | 323.56 | |
| 3 SECTOR AMP | ZERO | 5.00 | 45.94 | |
| | PLUS | 95.00 | 268.53 | |
| 4 SECTOR AMP | ZERO | 5.00 | 18.07 | |
| | PLUS | 95.00 | 254.15 | |
| 5 SECTOR AMP | ZERO | 5.00 | 50.12 | |
| | PLUS | 95.00 | 252.11 | |
| 6 SECTOR AMP | ZERO | 5.00 | 32.24 | |
| | PLUS | 95.00 | 187.09 | |
| 7 SECTOR AMP | ZERO | 5.00 | 39.41 | |

| | | | |
|--------------|------|-------|--------|
| | PLUS | 95.00 | 226.73 |
| 8 SECTOR AMP | ZERO | 5.00 | 370.15 |
| | PLUS | 95.00 | 477.73 |

1 7/16 Adapter Head

Weight 2.2 LB.
Length 12 IN.
Max. Diameter 1.44 IN.

Total Stack Weight 223.0 LBS. in air
Total Stack Length 27.83 FT.

Slim Hole Centralizer

Weight 15 lbs
Length 2.49 FT.
Max. Diameter 2.750 IN.

Collar Locator

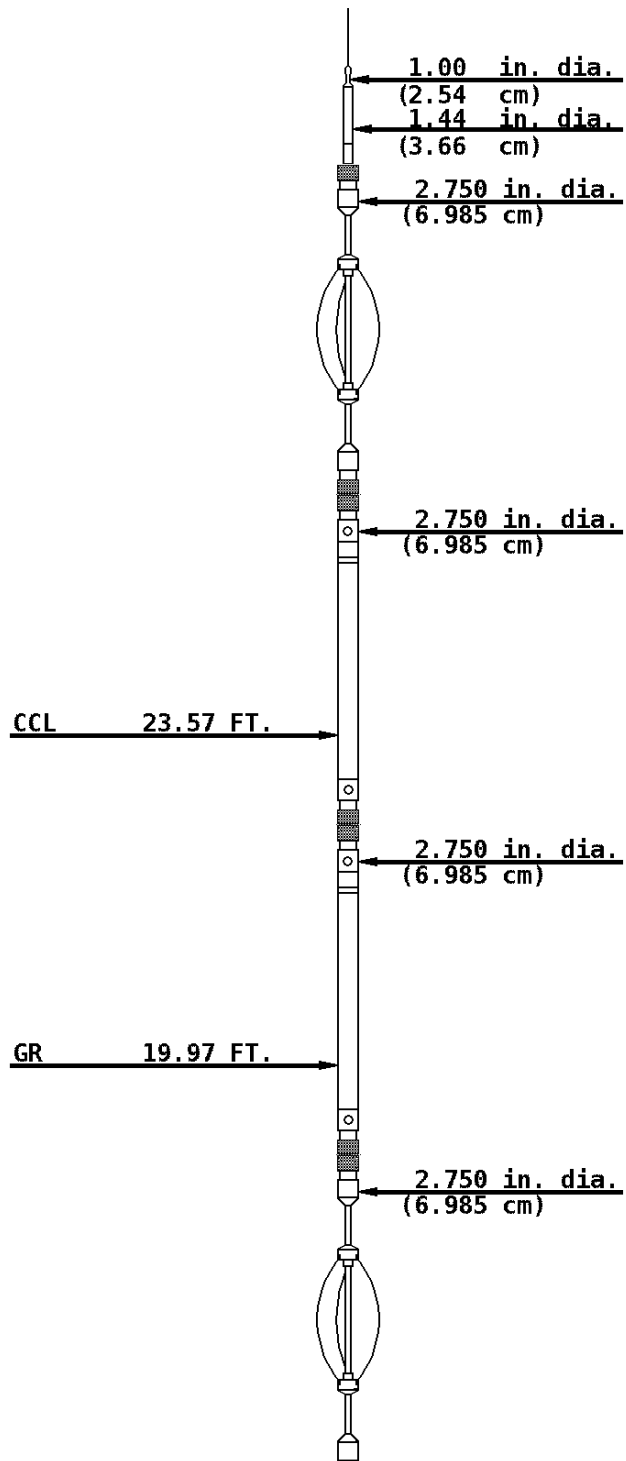
Weight 39.8 LBS.
Length 3.40 FT.
Max. Diameter 2.75 IN.

Slim Hole Gamma Ray

Weight 39.8 LBS.
Length 4.71 FT.
Max. Diameter 2.750 IN.

Slim Hole Centralizer

Weight 22 LBS.
Length 3.08 FT.
Max. Diameter 2.750 IN.



Sector Bond

Weight 89.2 LBS>
Length 10.32 FT.
Max. Diameter 2.750 IN.

SBT/CBL Tx 8.75 FT.

SBT Rx 7.77 FT.

3' Rx 7.28 FT.

5' Rx 6.28 FT.

2.750 in. dia.
(6.985 cm)

Slim Hole Centralizer

Weight 15.0 LBS.
Length 2.82 FT.
Max. Diameter 2.750 IN.

2.750 in. dia.
(6.985 cm)

Tool Zero

COMPANY SG INTERESTS I. LTD

WELL VOLK 12-89-21 # 1

FIELD COAL BASIN EXT

COUNTY GUNNISON

STATE COLORADO



Weatherford®