

# **Denver Division- Colorado**

**DJ - Hereford Ranch**

**Anschutz East Platte 07-04H**

**Anschutz East Platte 07-04H**

**Original Wellbore**

**Plan: APD Directional Plan**

## **Standard Planning Report**

**20 September, 2011**

# EOG Resources Inc

## Planning Report

<b>Database:</b>	EDM	<b>Local Co-ordinate Reference:</b>	Site Anschutz East Platte 07-04H
<b>Company:</b>	Denver Division- Colorado	<b>TVD Reference:</b>	RIG @ 4510.00ft (TBD)
<b>Project:</b>	DJ - Hereford Ranch	<b>MD Reference:</b>	RIG @ 4510.00ft (TBD)
<b>Site:</b>	Anschutz East Platte 07-04H	<b>North Reference:</b>	True
<b>Well:</b>	Anschutz East Platte 07-04H	<b>Survey Calculation Method:</b>	Minimum Curvature
<b>Wellbore:</b>	Original Wellbore		
<b>Design:</b>	APD Directional Plan		

<b>Project</b>	DJ - Hereford Ranch, Weld County		
<b>Map System:</b>	US State Plane 1927 (Exact solution)	<b>System Datum:</b>	Mean Sea Level
<b>Geo Datum:</b>	NAD 1927 (NADCON CONUS)		
<b>Map Zone:</b>	Colorado North 501		

Site	Anschutz East Platte 07-04H				
Site Position:		Northing:	367,859.46 ft	Latitude:	40° 20' 9.578 N
From:	Lat/Long	Easting:	2,360,088.28 ft	Longitude:	104° 12' 29.880 W
Position Uncertainty:	0.00 ft	Slot Radius:	"	Grid Convergence:	0.83 deg

Well	Anschutz East Platte 07-04H					
Well Position	+N-S	0.00 ft	Northing:	367,859.46 ft	Latitude:	40° 20' 9.578 N
	+E-W	0.00 ft	Easting:	2,360,088.28 ft	Longitude:	104° 12' 29.880 W
Position Uncertainty		0.00 ft	Wellhead Elevation:	ft	Ground Level:	4,488.00 ft

<b>Wellbore</b>	Original Wellbore				
<b>Magnetics</b>	<b>Model Name</b>	<b>Sample Date</b>	<b>Declination (deg)</b>	<b>Dip Angle (deg)</b>	<b>Field Strength (nT)</b>
	IGRF200510	9/19/2011	8.48	67.09	53,153

<b>Design</b>	APD Directional Plan				
<b>Audit Notes:</b>					
<b>Version:</b>	<b>Phase:</b>	PROTOTYPE	<b>Tie On Depth:</b>	0.00	
<b>Vertical Section:</b>	<b>Depth From (TVD) (ft)</b>	<b>+N/-S (ft)</b>	<b>+E/-W (ft)</b>	<b>Direction (deg)</b>	
	0.00	0.00	0.00	149.33	

<b>Plan Sections</b>										
Measured Depth (ft)	Inclination (deg)	Azimuth (deg)	Vertical Depth (ft)	+N/-S (ft)	+E/-W (ft)	Dogleg Rate (?/100ft)	Build Rate (?/100ft)	Turn Rate (?/100ft)	TFO (deg)	Target
0.00	0.00	0.00	0.00	0.00	0.00	0.00	0.00	0.00	0.00	
1,000.00	0.00	0.00	1,000.00	0.00	0.00	0.00	0.00	0.00	0.00	
3,223.30	22.23	134.53	3,167.92	-298.73	303.67	1.00	1.00	0.00	134.53	
5,805.55	22.23	134.53	5,558.19	-983.92	1,000.20	0.00	0.00	0.00	0.00	
6,370.28	90.00	134.53	5,855.00	-1,293.87	1,315.27	12.00	12.00	0.00	0.00	Anschutz East Platt
7,307.82	90.00	157.97	5,855.00	-2,067.98	1,832.53	2.50	0.00	2.50	90.00	Anschutz East Platt
10,779.30	90.00	157.97	5,855.00	-5,285.96	3,134.73	0.00	0.00	0.00	0.00	Anschutz East Platt

# EOG Resources Inc

## Planning Report

<b>Database:</b>	EDM	<b>Local Co-ordinate Reference:</b>	Site Anschutz East Platte 07-04H
<b>Company:</b>	Denver Division- Colorado	<b>TVD Reference:</b>	RIG @ 4510.00ft (TBD)
<b>Project:</b>	DJ - Hereford Ranch	<b>MD Reference:</b>	RIG @ 4510.00ft (TBD)
<b>Site:</b>	Anschutz East Platte 07-04H	<b>North Reference:</b>	True
<b>Well:</b>	Anschutz East Platte 07-04H	<b>Survey Calculation Method:</b>	Minimum Curvature
<b>Wellbore:</b>	Original Wellbore		
<b>Design:</b>	APD Directional Plan		

Planned Survey									
Measured Depth (ft)	Inclination (deg)	Azimuth (deg)	Vertical Depth (ft)	+N/-S (ft)	+E/-W (ft)	Vertical Section (ft)	Dogleg Rate (?/100ft)	Build Rate (?/100ft)	Turn Rate (?/100ft)
0.00	0.00	0.00	0.00	0.00	0.00	0.00	0.00	0.00	0.00
100.00	0.00	0.00	100.00	0.00	0.00	0.00	0.00	0.00	0.00
200.00	0.00	0.00	200.00	0.00	0.00	0.00	0.00	0.00	0.00
300.00	0.00	0.00	300.00	0.00	0.00	0.00	0.00	0.00	0.00
400.00	0.00	0.00	400.00	0.00	0.00	0.00	0.00	0.00	0.00
500.00	0.00	0.00	500.00	0.00	0.00	0.00	0.00	0.00	0.00
600.00	0.00	0.00	600.00	0.00	0.00	0.00	0.00	0.00	0.00
700.00	0.00	0.00	700.00	0.00	0.00	0.00	0.00	0.00	0.00
800.00	0.00	0.00	800.00	0.00	0.00	0.00	0.00	0.00	0.00
9-5/8"									
900.00	0.00	0.00	900.00	0.00	0.00	0.00	0.00	0.00	0.00
1,000.00	0.00	0.00	1,000.00	0.00	0.00	0.00	0.00	0.00	0.00
1,100.00	1.00	134.53	1,099.99	-0.61	0.62	0.84	1.00	1.00	0.00
1,200.00	2.00	134.53	1,199.96	-2.45	2.49	3.37	1.00	1.00	0.00
1,300.00	3.00	134.53	1,299.86	-5.51	5.60	7.59	1.00	1.00	0.00
1,400.00	4.00	134.53	1,399.68	-9.79	9.95	13.49	1.00	1.00	0.00
1,500.00	5.00	134.53	1,499.37	-15.29	15.54	21.08	1.00	1.00	0.00
1,600.00	6.00	134.53	1,598.90	-22.01	22.38	30.35	1.00	1.00	0.00
1,700.00	7.00	134.53	1,698.26	-29.95	30.45	41.29	1.00	1.00	0.00
1,800.00	8.00	134.53	1,797.40	-39.10	39.75	53.91	1.00	1.00	0.00
1,900.00	9.00	134.53	1,896.30	-49.47	50.29	68.20	1.00	1.00	0.00
2,000.00	10.00	134.53	1,994.93	-61.04	62.05	84.16	1.00	1.00	0.00
2,100.00	11.00	134.53	2,093.26	-73.82	75.04	101.78	1.00	1.00	0.00
2,200.00	12.00	134.53	2,191.25	-87.80	89.26	121.05	1.00	1.00	0.00
2,300.00	13.00	134.53	2,288.87	-102.98	104.69	141.98	1.00	1.00	0.00
2,400.00	14.00	134.53	2,386.11	-119.35	121.33	164.55	1.00	1.00	0.00
2,500.00	15.00	134.53	2,482.92	-136.91	139.18	188.75	1.00	1.00	0.00
2,600.00	16.00	134.53	2,579.29	-155.65	158.23	214.59	1.00	1.00	0.00
2,700.00	17.00	134.53	2,675.17	-175.57	178.47	242.05	1.00	1.00	0.00
2,800.00	18.00	134.53	2,770.54	-196.66	199.91	271.12	1.00	1.00	0.00
2,900.00	19.00	134.53	2,865.37	-218.91	222.53	301.80	1.00	1.00	0.00
3,000.00	20.00	134.53	2,959.63	-242.32	246.33	334.07	1.00	1.00	0.00
3,100.00	21.00	134.53	3,053.30	-266.88	271.29	367.93	1.00	1.00	0.00
3,200.00	22.00	134.53	3,146.34	-292.58	297.42	403.36	1.00	1.00	0.00
3,223.30	22.23	134.53	3,167.92	-298.73	303.67	411.84	1.00	1.00	0.00
3,300.00	22.23	134.53	3,238.92	-319.08	324.36	439.90	0.00	0.00	0.00
3,400.00	22.23	134.53	3,331.49	-345.62	351.33	476.48	0.00	0.00	0.00
3,500.00	22.23	134.53	3,424.05	-372.15	378.31	513.07	0.00	0.00	0.00
3,600.00	22.23	134.53	3,516.62	-398.69	405.28	549.65	0.00	0.00	0.00
3,700.00	22.23	134.53	3,609.18	-425.22	432.26	586.23	0.00	0.00	0.00
3,800.00	22.23	134.53	3,701.75	-451.76	459.23	622.81	0.00	0.00	0.00
3,900.00	22.23	134.53	3,794.31	-478.29	486.20	659.39	0.00	0.00	0.00
4,000.00	22.23	134.53	3,886.88	-504.82	513.18	695.97	0.00	0.00	0.00
4,100.00	22.23	134.53	3,979.44	-531.36	540.15	732.56	0.00	0.00	0.00
4,200.00	22.23	134.53	4,072.01	-557.89	567.12	769.14	0.00	0.00	0.00
4,300.00	22.23	134.53	4,164.57	-584.43	594.10	805.72	0.00	0.00	0.00
4,400.00	22.23	134.53	4,257.14	-610.96	621.07	842.30	0.00	0.00	0.00
4,500.00	22.23	134.53	4,349.70	-637.50	648.04	878.88	0.00	0.00	0.00
4,600.00	22.23	134.53	4,442.27	-664.03	675.02	915.47	0.00	0.00	0.00
4,700.00	22.23	134.53	4,534.84	-690.57	701.99	952.05	0.00	0.00	0.00
4,800.00	22.23	134.53	4,627.40	-717.10	728.96	988.63	0.00	0.00	0.00
4,900.00	22.23	134.53	4,719.97	-743.64	755.94	1,025.21	0.00	0.00	0.00
5,000.00	22.23	134.53	4,812.53	-770.17	782.91	1,061.79	0.00	0.00	0.00
5,100.00	22.23	134.53	4,905.10	-796.71	809.89	1,098.37	0.00	0.00	0.00

# EOG Resources Inc

## Planning Report

<b>Database:</b>	EDM	<b>Local Co-ordinate Reference:</b>	Site Anschutz East Platte 07-04H
<b>Company:</b>	Denver Division- Colorado	<b>TVD Reference:</b>	RIG @ 4510.00ft (TBD)
<b>Project:</b>	DJ - Hereford Ranch	<b>MD Reference:</b>	RIG @ 4510.00ft (TBD)
<b>Site:</b>	Anschutz East Platte 07-04H	<b>North Reference:</b>	True
<b>Well:</b>	Anschutz East Platte 07-04H	<b>Survey Calculation Method:</b>	Minimum Curvature
<b>Wellbore:</b>	Original Wellbore		
<b>Design:</b>	APD Directional Plan		

Planned Survey									
Measured Depth (ft)	Inclination (deg)	Azimuth (deg)	Vertical Depth (ft)	+N/-S (ft)	+E/-W (ft)	Vertical Section (ft)	Dogleg Rate (?/100ft)	Build Rate (?/100ft)	Turn Rate (?/100ft)
5,200.00	22.23	134.53	4,997.66	-823.24	836.86	1,134.96	0.00	0.00	0.00
5,300.00	22.23	134.53	5,090.23	-849.78	863.83	1,171.54	0.00	0.00	0.00
5,400.00	22.23	134.53	5,182.79	-876.31	890.81	1,208.12	0.00	0.00	0.00
5,500.00	22.23	134.53	5,275.36	-902.84	917.78	1,244.70	0.00	0.00	0.00
5,600.00	22.23	134.53	5,367.92	-929.38	944.75	1,281.28	0.00	0.00	0.00
5,700.00	22.23	134.53	5,460.49	-955.91	971.73	1,317.87	0.00	0.00	0.00
5,800.00	22.23	134.53	5,553.05	-982.45	998.70	1,354.45	0.00	0.00	0.00
5,805.55	22.23	134.53	5,558.19	-983.92	1,000.20	1,356.48	0.00	0.00	0.00
5,900.00	33.57	134.53	5,641.53	-1,014.86	1,031.65	1,399.14	12.00	12.00	0.00
6,000.00	45.57	134.53	5,718.48	-1,059.45	1,076.98	1,460.61	12.00	12.00	0.00
6,100.00	57.57	134.53	5,780.52	-1,114.29	1,132.72	1,536.20	12.00	12.00	0.00
6,200.00	69.57	134.53	5,824.96	-1,176.97	1,196.44	1,622.62	12.00	12.00	0.00
6,277.00	78.81	134.53	5,845.92	-1,228.87	1,249.19	1,694.17	12.00	12.00	0.00
7"									
6,300.00	81.57	134.53	5,849.84	-1,244.76	1,265.35	1,716.08	12.00	12.00	0.00
6,370.28	90.00	134.53	5,855.00	-1,293.87	1,315.27	1,783.78	12.00	12.00	0.00
Anschutz East Platte 07-04H (ICP)									
6,400.00	90.00	135.27	5,855.00	-1,314.85	1,336.32	1,812.57	2.50	0.00	2.50
6,500.00	90.00	137.77	5,855.00	-1,387.40	1,405.12	1,910.07	2.50	0.00	2.50
6,600.00	90.00	140.27	5,855.00	-1,462.90	1,470.69	2,008.45	2.50	0.00	2.50
6,700.00	90.00	142.77	5,855.00	-1,541.18	1,532.91	2,107.51	2.50	0.00	2.50
6,800.00	90.00	145.27	5,855.00	-1,622.09	1,591.65	2,207.08	2.50	0.00	2.50
6,900.00	90.00	147.77	5,855.00	-1,705.50	1,646.80	2,306.95	2.50	0.00	2.50
7,000.00	90.00	150.27	5,855.00	-1,791.23	1,698.27	2,406.94	2.50	0.00	2.50
7,100.00	90.00	152.77	5,855.00	-1,879.12	1,745.95	2,506.86	2.50	0.00	2.50
7,200.00	90.00	155.27	5,855.00	-1,969.01	1,789.74	2,606.51	2.50	0.00	2.50
7,300.00	90.00	157.77	5,855.00	-2,060.73	1,829.58	2,705.72	2.50	0.00	2.50
7,307.82	90.00	157.97	5,855.00	-2,067.98	1,832.53	2,713.46	2.50	0.00	2.50
7,400.00	90.00	157.97	5,855.00	-2,153.42	1,867.10	2,804.59	0.00	0.00	0.00
7,500.00	90.00	157.97	5,855.00	-2,246.12	1,904.61	2,903.45	0.00	0.00	0.00
7,600.00	90.00	157.97	5,855.00	-2,338.82	1,942.13	3,002.32	0.00	0.00	0.00
7,700.00	90.00	157.97	5,855.00	-2,431.51	1,979.64	3,101.18	0.00	0.00	0.00
7,800.00	90.00	157.97	5,855.00	-2,524.21	2,017.15	3,200.05	0.00	0.00	0.00
7,900.00	90.00	157.97	5,855.00	-2,616.91	2,054.66	3,298.92	0.00	0.00	0.00
8,000.00	90.00	157.97	5,855.00	-2,709.61	2,092.17	3,397.78	0.00	0.00	0.00
8,100.00	90.00	157.97	5,855.00	-2,802.31	2,129.68	3,496.65	0.00	0.00	0.00
8,200.00	90.00	157.97	5,855.00	-2,895.00	2,167.20	3,595.51	0.00	0.00	0.00
8,300.00	90.00	157.97	5,855.00	-2,987.70	2,204.71	3,694.38	0.00	0.00	0.00
8,400.00	90.00	157.97	5,855.00	-3,080.40	2,242.22	3,793.25	0.00	0.00	0.00
8,500.00	90.00	157.97	5,855.00	-3,173.10	2,279.73	3,892.11	0.00	0.00	0.00
8,600.00	90.00	157.97	5,855.00	-3,265.79	2,317.24	3,990.98	0.00	0.00	0.00
8,700.00	90.00	157.97	5,855.00	-3,358.49	2,354.75	4,089.84	0.00	0.00	0.00
8,800.00	90.00	157.97	5,855.00	-3,451.19	2,392.26	4,188.71	0.00	0.00	0.00
8,900.00	90.00	157.97	5,855.00	-3,543.89	2,429.78	4,287.57	0.00	0.00	0.00
9,000.00	90.00	157.97	5,855.00	-3,636.59	2,467.29	4,386.44	0.00	0.00	0.00
9,100.00	90.00	157.97	5,855.00	-3,729.28	2,504.80	4,485.31	0.00	0.00	0.00
9,200.00	90.00	157.97	5,855.00	-3,821.98	2,542.31	4,584.17	0.00	0.00	0.00
9,300.00	90.00	157.97	5,855.00	-3,914.68	2,579.82	4,683.04	0.00	0.00	0.00
9,400.00	90.00	157.97	5,855.00	-4,007.38	2,617.33	4,781.90	0.00	0.00	0.00
9,500.00	90.00	157.97	5,855.00	-4,100.07	2,654.85	4,880.77	0.00	0.00	0.00
9,600.00	90.00	157.97	5,855.00	-4,192.77	2,692.36	4,979.63	0.00	0.00	0.00
9,700.00	90.00	157.97	5,855.00	-4,285.47	2,729.87	5,078.50	0.00	0.00	0.00
9,800.00	90.00	157.97	5,855.00	-4,378.17	2,767.38	5,177.37	0.00	0.00	0.00
9,900.00	90.00	157.97	5,855.00	-4,470.87	2,804.89	5,276.23	0.00	0.00	0.00

# EOG Resources Inc

## Planning Report

<b>Database:</b>	EDM	<b>Local Co-ordinate Reference:</b>	Site Anschutz East Platte 07-04H
<b>Company:</b>	Denver Division- Colorado	<b>TVD Reference:</b>	RIG @ 4510.00ft (TBD)
<b>Project:</b>	DJ - Hereford Ranch	<b>MD Reference:</b>	RIG @ 4510.00ft (TBD)
<b>Site:</b>	Anschutz East Platte 07-04H	<b>North Reference:</b>	True
<b>Well:</b>	Anschutz East Platte 07-04H	<b>Survey Calculation Method:</b>	Minimum Curvature
<b>Wellbore:</b>	Original Wellbore		
<b>Design:</b>	APD Directional Plan		

Planned Survey									
Measured Depth (ft)	Inclination (deg)	Azimuth (deg)	Vertical Depth (ft)	+N/-S (ft)	+E/-W (ft)	Vertical Section (ft)	Dogleg Rate (?/100ft)	Build Rate (?/100ft)	Turn Rate (?/100ft)
10,000.00	90.00	157.97	5,855.00	-4,563.56	2,842.40	5,375.10	0.00	0.00	0.00
10,100.00	90.00	157.97	5,855.00	-4,656.26	2,879.91	5,473.96	0.00	0.00	0.00
10,200.00	90.00	157.97	5,855.00	-4,748.96	2,917.43	5,572.83	0.00	0.00	0.00
10,300.00	90.00	157.97	5,855.00	-4,841.66	2,954.94	5,671.69	0.00	0.00	0.00
10,400.00	90.00	157.97	5,855.00	-4,934.36	2,992.45	5,770.56	0.00	0.00	0.00
10,500.00	90.00	157.97	5,855.00	-5,027.05	3,029.96	5,869.43	0.00	0.00	0.00
10,600.00	90.00	157.97	5,855.00	-5,119.75	3,067.47	5,968.29	0.00	0.00	0.00
10,700.00	90.00	157.97	5,855.00	-5,212.45	3,104.98	6,067.16	0.00	0.00	0.00
10,779.30	90.00	157.97	5,855.00	-5,285.96	3,134.73	6,145.56	0.00	0.00	0.00
Anschutz East Platte 07-04H (BHL)									

Design Targets									
Target Name	Dip Angle (deg)	Dip Dir. (deg)	TVD (ft)	+N/-S (ft)	+E/-W (ft)	Northing (ft)	Easting (ft)	Latitude	Longitude
- hit/miss target									
- Shape									
Anschutz East Platte 07-04H	0.00	0.00	5,855.00	-5,285.96	3,134.73	362,619.74	2,363,299.67	40° 19' 17.339 N	104° 11' 49.409 W
- plan hits target center									
- Point									

Casing Points					
Measured Depth (ft)	Vertical Depth (ft)	Name	Casing Diameter (")	Hole Diameter (")	
800.00	800.00	9-5/8"	9-5/8	13-1/2	
6,277.00	5,845.92	7"	7	8-3/4	
10,944.57		4 1/2"	4-1/2	6	

Formations					
Measured Depth (ft)	Vertical Depth (ft)	Name	Lithology	Dip (deg)	Dip Direction (deg)
6,075.75	5,767.00	Top of Niobrara		0.00	

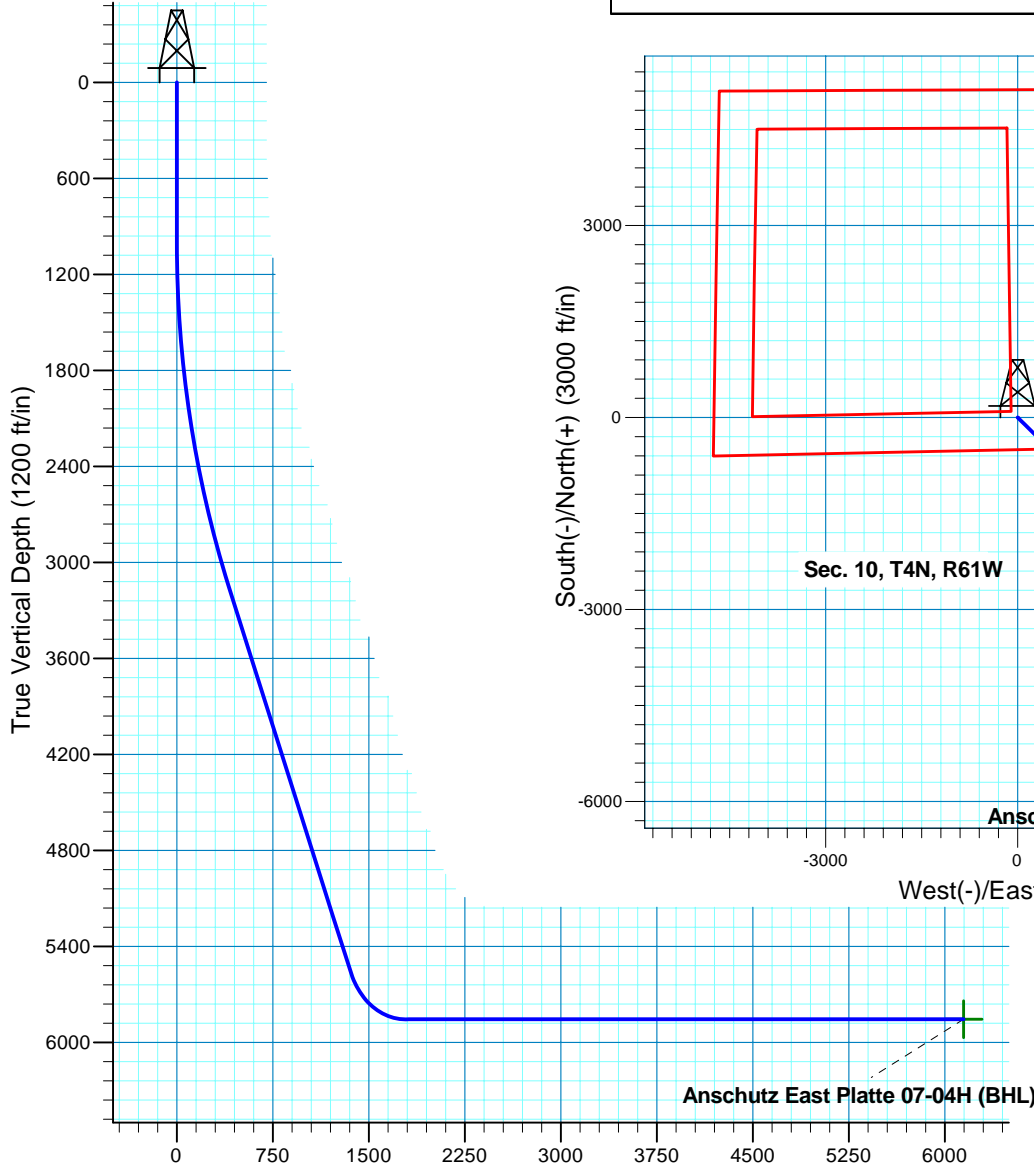
# Anschutz East Platte 07-04H

Section 4 T4N R61W

Weld County, CO

## Surface Location

NAD 1927 (NADCON CONUS) Colorado North 501  
Ground Elevation: 4488.00 RIG @ 4510.00ft (TBD)  
Northing Easting Latitude Longitude  
367859.46 2360088.28 40° 20' 9.578 N 104° 12' 29.880 W



Vertical Section at 149.33deg (1500 ft/in)

**T M**  
Azimuths to True North  
Magnetic North: 8.48°  
Magnetic Field  
Strength: 53152.9snT  
Dip Angle: 67.09°  
Date: 9/19/2011  
Model: IGRF200510

Project: DJ - Hereford Ranch  
Site: Anschutz East Platte 07-04H  
Well: Anschutz East Platte 07-04H  
Plan: APD Directional Plan

## SECTION DETAILS

Sec	MD	Inc	Azi	TVD	+N/-S	+E/-W	DLeg	TFace	VSec	Target
1	0.00	0.00	0.00	0.00	0.00	0.00	0.00	0.00	0.00	
2	1000.00	0.00	0.00	1000.00	0.00	0.00	0.00	0.00	0.00	
3	3223.30	22.23	134.53	3167.92	-298.73	303.67	1.00	134.53	411.84	
4	5805.55	22.23	134.53	5558.19	-983.92	1000.20	0.00	0.00	1356.48	
5	6370.28	90.00	134.53	5855.00	-1293.87	1315.27	12.00	0.00	1783.78	Anschutz East Platte 07-04H (ICP)
6	7307.82	90.00	157.97	5855.00	-2067.98	1832.53	2.50	90.00	2713.46	Anschutz East Platte 07-04H (BHL)
7	10779.30	90.00	157.97	5855.00	-5285.96	3134.73	0.00	0.00	6145.56	Anschutz East Platte 07-04H (BHL)

## TARGET DETAILS

Name	TVD	+N/-S	+E/-W	Northing	Easting	Latitude	Longitude	Shape
Anschutz East Platte 07-04H (BHL)	5855.00	-5285.96	3134.73	362619.74	2363299.67	40° 19' 17.339 N	104° 11' 49.409 W	Point