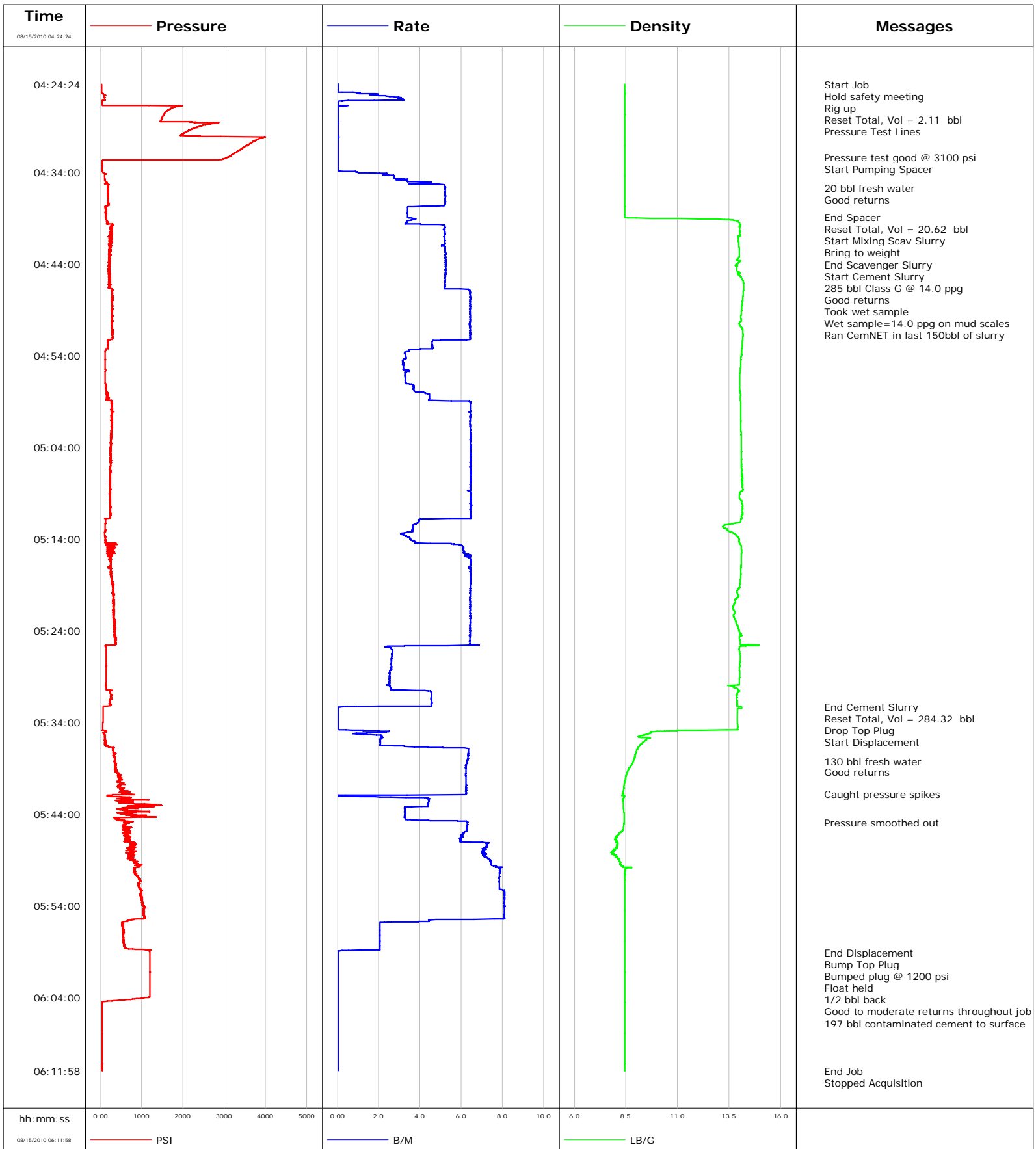


Well	WF14B-22 K22 596,1	Client	ENCANA
Field	N. Parachute	SIR No.	BAD4-00141
Engineer	Dave Wanczyk	Job Type	9 5/8 Surface casing
Country	United States	Job Date	08-15-2010





Cementing Service Report

				Customer ENCANA			Job Number BAD4-00141				
Well WF14B-22 K22 596,1			Location (legal)			Schlumberger Location Grand Junction, CO			Job Start Aug/15/2010		
Field N. Parachute		Formation Name/Type Shale		Deviation		Bit Size 12.3 in		Well MD 1728.0 ft		Well TVD 1728.0 ft	
County GARFIELD		State/Province Colorado		BHP		BHST 100 degF		BHCT 87 degF		Pore Press. Gradient	
Well Master 0631203042		API/UWI									
Rig Name Patterson 303		Drilled For Gas		Service Via Land		Casing/Liner					
						Depth, ft		Size, in		Weight, lb/ft	
						Grade		Thread			
Offshore Zone		Well Class New		Well Type Development		143.0		16.000		65.0	
						1728.0		9.630		36.0	
						K55		K55		8RD	
						8RD					
Drilling Fluid Type Bentonite		Max. Density 9.50 lb/gal		Plastic Viscosity		Tubing/Drill Pipe					
						Depth,		Size,		Weight,	
						Grade		Thread			
Service Line Cementing		Job Type 9 5/8 Surface casing									
Max. Allowed Tub. Press 3520 psi		Max. Allowed Ann. Press 2030 psi		WH Connection 9 5/8		Perforations/Open Hole					
						Top,		Bottom,		No. of Shots	
										Total Interval	
										Diameter	
						Treat Down Casing		Displacement 130.2 bbl		Packer Type	
										Packer Depth	
						Tubing Vol.		Casing Vol. 133.6 bbl		Annular Vol. 106.0 bbl	
										Openhole Vol. 276.0 bbl	
Casing/Tubing Secured <input checked="" type="checkbox"/>		1 Hole Vol. Circulated prior to Cement <input checked="" type="checkbox"/>		Casing Tools				Squeeze Job			
Lift Pressure 855 psi		Shoe Type Guide		Shoe Depth 1728.0 ft				Squeeze Type			
Pipe Rotated <input type="checkbox"/>		Pipe Reciprocated <input type="checkbox"/>		Stage Tool Type				Tool Type			
No. Centralizers		Top Plugs 1		Bottom Plugs		Stage Tool Depth				Tool Depth	
Cement Head Type Single		Stage Tool Depth				Tail Pipe Size					
Job Scheduled For Aug/15/2010 03:00		Arrived on Location Aug/15/2010 03:00		Leave Location Aug/15/2010		Collar Type Diff-Fill				Tail Pipe Depth	
						Collar Depth 1684.0 ft				Sqz. Total Vol.	
Date	Time 24-hr clock	Treating Pressure PSI	Flow Rate B/M	Density LB/G	Volume BBL	Message					
08/15/2010	04:14:55					Started Acquisition					
08/15/2010	04:24:24	31	0.0	8.44	0.0						
08/15/2010	04:24:25					Start Job					
08/15/2010	04:24:25	32	0.0	8.44	0.0						
08/15/2010	04:24:37					Hold safety meeting					
08/15/2010	04:24:37					Rig up					
08/15/2010	04:24:37	32	0.0	8.44	0.0						
08/15/2010	04:24:55	31	0.0	8.44	0.0						
08/15/2010	04:26:18					Reset Total, Vol = 2.11 bbl					
08/15/2010	04:26:18	48	0.0	8.44	2.1						
08/15/2010	04:26:22					Pressure Test Lines					
08/15/2010	04:26:22	46	0.0	8.44	2.1						
08/15/2010	04:26:35	46	0.0	8.44	2.1						
08/15/2010	04:28:15	1474	0.0	8.44	2.2						
08/15/2010	04:29:55	1964	0.0	8.44	2.2						
08/15/2010	04:31:35	3373	0.0	8.44	2.2						
08/15/2010	04:32:20					Pressure test good @ 3100 psi					
08/15/2010	04:32:20	3107	0.0	8.44	2.2						
08/15/2010	04:32:56					Start Pumping Spacer					
08/15/2010	04:32:56	37	0.0	8.44	2.2						
08/15/2010	04:33:15	37	0.0	8.44	2.2						

Well		Field		Job Start		Customer		Job Number	
WF14B-22 K22 596,1		N. Parachute		Aug/15/2010		ENCANA		BAD4-00141	
Date	Time 24-hr clock	Treating Pressure PSI	Flow Rate B/M	Density LB/G	Volume BBL	Message			
08/15/2010	04:35:40					20 bbl fresh water			
08/15/2010	04:35:40					Good returns			
08/15/2010	04:35:40	181	5.2	8.44	8.0				
08/15/2010	04:36:35	179	5.2	8.44	12.8				
08/15/2010	04:38:15	129	3.4	8.44	20.5				
08/15/2010	04:38:53					End Spacer			
08/15/2010	04:38:53	128	3.4	8.44	22.7				
08/15/2010	04:38:54					Reset Total, Vol = 20.62 bbl			
08/15/2010	04:38:54	128	3.4	8.44	22.7				
08/15/2010	04:38:56					Start Mixing Scav Slurry			
08/15/2010	04:38:56	140	3.4	8.44	22.8				
08/15/2010	04:39:03					Bring to weight			
08/15/2010	04:39:03	136	3.7	10.45	23.3				
08/15/2010	04:39:49					End Scavenger Slurry			
08/15/2010	04:39:49	256	5.2	14.00	26.1				
08/15/2010	04:39:50					Start Cement Slurry			
08/15/2010	04:39:50	274	5.2	14.00	26.2				
08/15/2010	04:39:53					285 bbl Class G @ 14.0 ppg			
08/15/2010	04:39:53	261	5.2	13.99	26.5				
08/15/2010	04:39:54					Good returns			
08/15/2010	04:39:54					Took wet sample			
08/15/2010	04:39:54					Wet sample= 14.0 ppg on mud scales			
08/15/2010	04:39:54	293	5.2	13.99	26.6				
08/15/2010	04:39:55	242	5.2	14.00	26.7				
08/15/2010	04:40:56					Ran CemNET in last 150bbl of slurry			
08/15/2010	04:40:56	254	5.2	14.03	31.9				
08/15/2010	04:41:35	214	5.2	13.95	35.3				
08/15/2010	04:43:15	225	5.2	13.98	44.0				
08/15/2010	04:44:55	219	5.2	13.92	52.7				
08/15/2010	04:46:35	219	5.2	14.20	61.4				
08/15/2010	04:48:15	281	6.4	14.14	72.0				
08/15/2010	04:49:55	277	6.4	14.07	82.7				
08/15/2010	04:51:35	288	6.4	14.16	93.4				
08/15/2010	04:53:15	181	4.6	14.12	102.4				
08/15/2010	04:54:55	111	3.2	14.06	107.9				
08/15/2010	04:56:35	112	3.3	14.02	113.4				
08/15/2010	04:58:15	198	4.5	14.05	119.5				
08/15/2010	04:59:55	270	6.5	14.06	128.9				
08/15/2010	05:01:35	274	6.4	14.06	139.6				
08/15/2010	05:03:15	252	6.5	14.09	150.4				
08/15/2010	05:04:55	245	6.5	14.09	161.1				
08/15/2010	05:06:35	246	6.5	14.11	171.9				
08/15/2010	05:08:15	239	6.5	14.13	182.7				
08/15/2010	05:09:55	240	6.5	14.11	193.4				
08/15/2010	05:11:35	249	6.5	14.09	204.2				
08/15/2010	05:13:15	107	3.5	13.59	211.0				
08/15/2010	05:14:55	361	6.1	14.09	217.8				
08/15/2010	05:16:35	250	6.5	14.08	228.3				
08/15/2010	05:18:15	276	6.5	14.06	239.0				
08/15/2010	05:19:55	299	6.4	13.89	249.8				
08/15/2010	05:21:35	321	6.4	13.69	260.5				
08/15/2010	05:23:15	324	6.4	13.85	271.2				
08/15/2010	05:24:55	368	6.4	14.00	281.9				
08/15/2010	05:26:35	136	2.7	14.03	289.0				

Well		Field		Job Start	Customer	Job Number
WF14B-22 K22 596,1		N. Parachute		Aug/15/2010	ENCANA	BAD4-00141
Date	Time 24-hr clock	Treating Pressure PSI	Flow Rate B/M	Density LB/G	Volume BBL	Message
08/15/2010	05:29:55	128	2.4	13.99	297.6	
08/15/2010	05:31:35	229	4.6	13.88	304.0	
08/15/2010	05:32:18					End Cement Slurry
08/15/2010	05:32:18	70	0.3	14.08	307.0	
08/15/2010	05:32:22					Reset Total, Vol = 284.32 bbl
08/15/2010	05:32:22	68	0.0	14.10	307.1	
08/15/2010	05:32:25					Drop Top Plug
08/15/2010	05:32:25					Start Displacement
08/15/2010	05:32:25	68	0.0	14.11	307.1	
08/15/2010	05:33:15	65	0.0	13.90	307.1	
08/15/2010	05:34:55	150	2.0	10.57	307.2	
08/15/2010	05:36:35	170	3.2	9.14	310.5	
08/15/2010	05:38:14					130 bbl fresh water
08/15/2010	05:38:14	329	6.3	8.86	320.5	
08/15/2010	05:38:15	346	6.3	8.86	320.6	
08/15/2010	05:39:21					Good returns
08/15/2010	05:39:21	379	6.2	8.58	327.5	
08/15/2010	05:39:55	442	6.2	8.50	331.0	
08/15/2010	05:41:35	521	6.2	8.35	341.4	
08/15/2010	05:41:47					Caught pressure spikes
08/15/2010	05:41:47	513	6.2	8.35	342.6	
08/15/2010	05:43:15	918	3.3	8.38	348.2	
08/15/2010	05:44:55	667	6.3	8.41	354.4	
08/15/2010	05:44:57					Pressure smoothed out
08/15/2010	05:44:57	668	6.3	8.41	354.6	
08/15/2010	05:46:35	630	6.0	7.96	364.7	
08/15/2010	05:48:15	797	7.0	7.83	376.1	
08/15/2010	05:49:55	821	7.9	8.48	388.4	
08/15/2010	05:51:35	906	7.8	8.44	401.4	
08/15/2010	05:53:15	985	8.1	8.44	414.8	
08/15/2010	05:54:55	1027	8.1	8.44	428.2	
08/15/2010	05:56:35	565	2.1	8.44	435.7	
08/15/2010	05:58:15	568	2.1	8.44	439.1	
08/15/2010	05:59:04					End Displacement
08/15/2010	05:59:04	1193	0.0	8.44	440.3	
08/15/2010	05:59:05					Bump Top Plug
08/15/2010	05:59:05	1197	0.0	8.44	440.3	
08/15/2010	05:59:55	1195	0.0	8.44	440.3	
08/15/2010	06:01:35	1197	0.0	8.44	440.3	
08/15/2010	06:01:39					Bumped plug @ 1200 psi
08/15/2010	06:01:39					Float held
08/15/2010	06:01:39	1197	0.0	8.44	440.3	
08/15/2010	06:01:42					1/2 bbl back
08/15/2010	06:01:42					Good to moderate returns throughout job
08/15/2010	06:01:42					197 bbl contaminated cement to surface
08/15/2010	06:01:42	1197	0.0	8.44	440.3	
08/15/2010	06:03:15	1200	0.0	8.45	440.3	
08/15/2010	06:04:55	39	0.0	8.44	440.3	
08/15/2010	06:06:35	38	0.0	8.45	440.4	
08/15/2010	06:08:15	37	0.0	8.44	440.4	
08/15/2010	06:09:55	37	0.0	8.45	440.4	
08/15/2010	06:11:35	37	0.0	8.45	440.4	
08/15/2010	06:11:58	36	0.0	8.45	440.4	
08/15/2010	06:11:58					End Job

Well WF14B-22 K22 596,1	Field N. Parachute	Job Start Aug/15/2010	Customer ENCANA	Job Number BAD4-00141
-----------------------------------	------------------------------	---------------------------------	---------------------------	---------------------------------

Post Job Summary

Average Pump Rates, bbl/min					Volume of Fluid Injected, bbl			
Slurry 4.2	N2	Mud 0.0	Maximum Rate 8.1	Total Slurry 285.0	Mud 0.0	Spacer 20.0	N2	
Treating Pressure Summary, psi					Breakdown Fluid			
Maximum 3100	Final 0	Average 469	Bump Plug to 1200	Breakdown	Type	Volume	Density	
Avg. N2 Percent	Designed Slurry Volume 285.0 bbl		Displacement 133.2 bbl	Mix Water Temp 70 degF	Cement Circulated to Surface? <input checked="" type="checkbox"/>	Volume 197.0 bbl		
Customer or Authorized Representative Ed Asuchak					Schlumberger Supervisor Dave Wanczyk		Washed Thru Perfs <input type="checkbox"/>	To
					Circulation Lost <input type="checkbox"/>		Job Completed <input checked="" type="checkbox"/>	
					-		-	