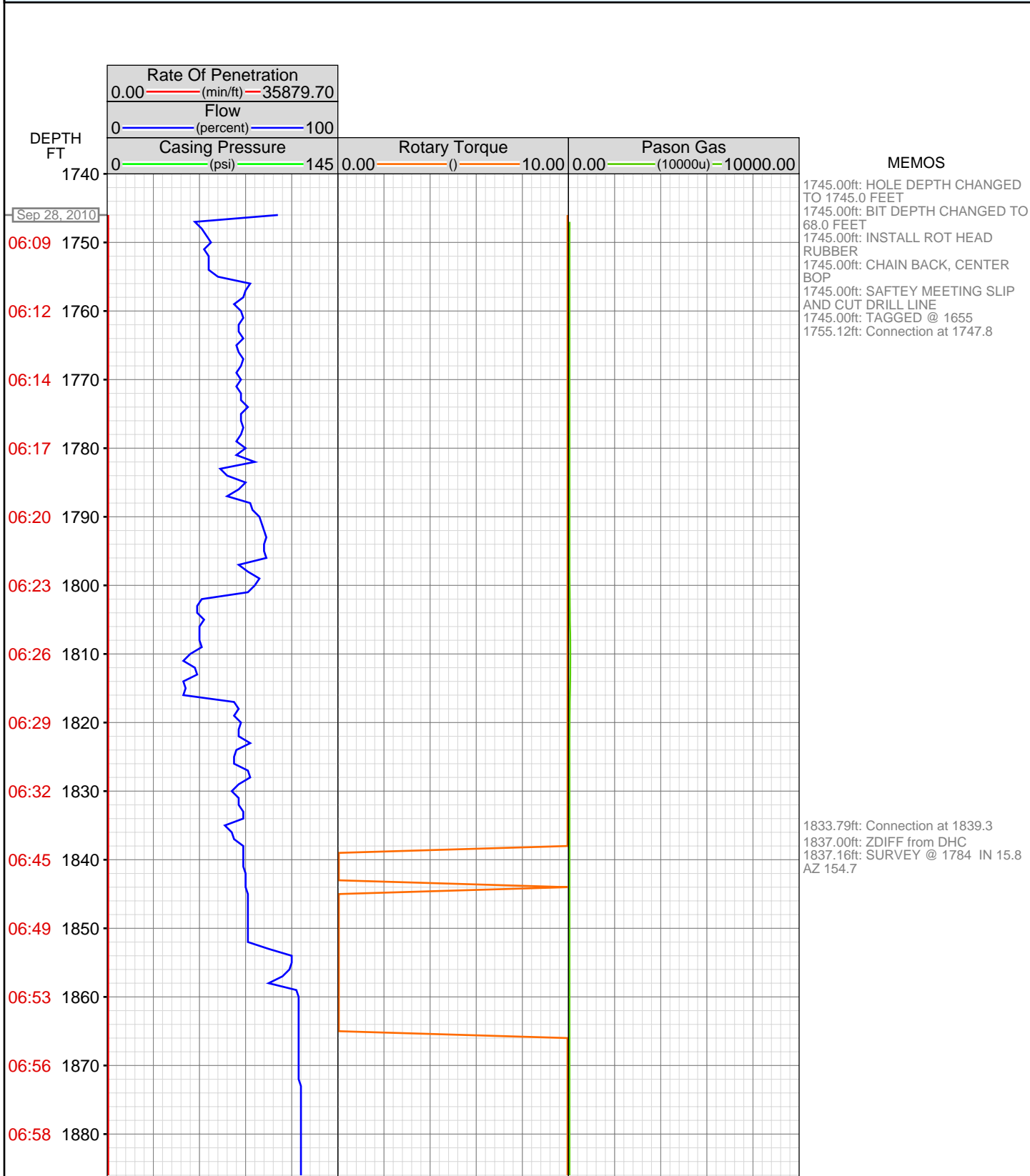


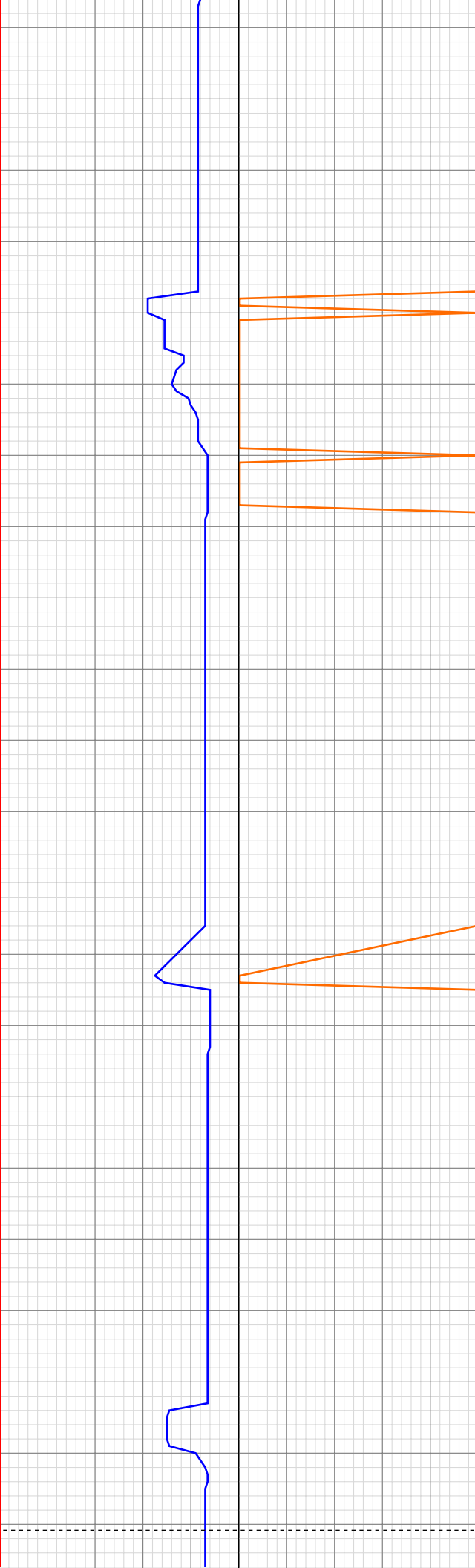
# DataHub EDR Log

Mon Oct 04, 2010 09:01:10  
Well Dossier 1285623620  
Marilyn Tucker

<b>OPERATOR:</b> EnCana Oil & Gas (USA), Inc.	<b>CONTRACTOR:</b> Patterson-UTI Drilling Company
<b>WELL:</b> NPWF14B-22 K22 596	<b>UNIQUE WELL ID:</b>
<b>FIELD:</b>	<b>SPUD DATE:</b> Sep 28, 2010 05:30
<b>LOCATION:</b> QTR.NESW SEC.22 TWP.5S RNG.96W MER	<b>RELEASE DATE:</b> Oct 03, 2010 21:00
<b>COUNTRY:</b> USA	
<b>RIG:</b> Pat-UTI 303	



07:00 1890  
07:02 1900  
07:04 1910  
07:06 1920  
07:12 1930  
07:15 1940  
07:19 1950  
07:22 1960  
07:24 1970  
07:26 1980  
07:27 1990  
07:29 2000  
07:31 2010  
07:36 2020  
07:46 2030  
07:47 2040  
07:49 2050  
07:51 2060  
07:52 2070  
07:54 2080  
08:02 2090  
08:31 2100



1926.60ft: Connection at 1930.9  
1926.60ft: SURVEY @ 1875 IN 16.3  
AZ 151.4 TVD 1802

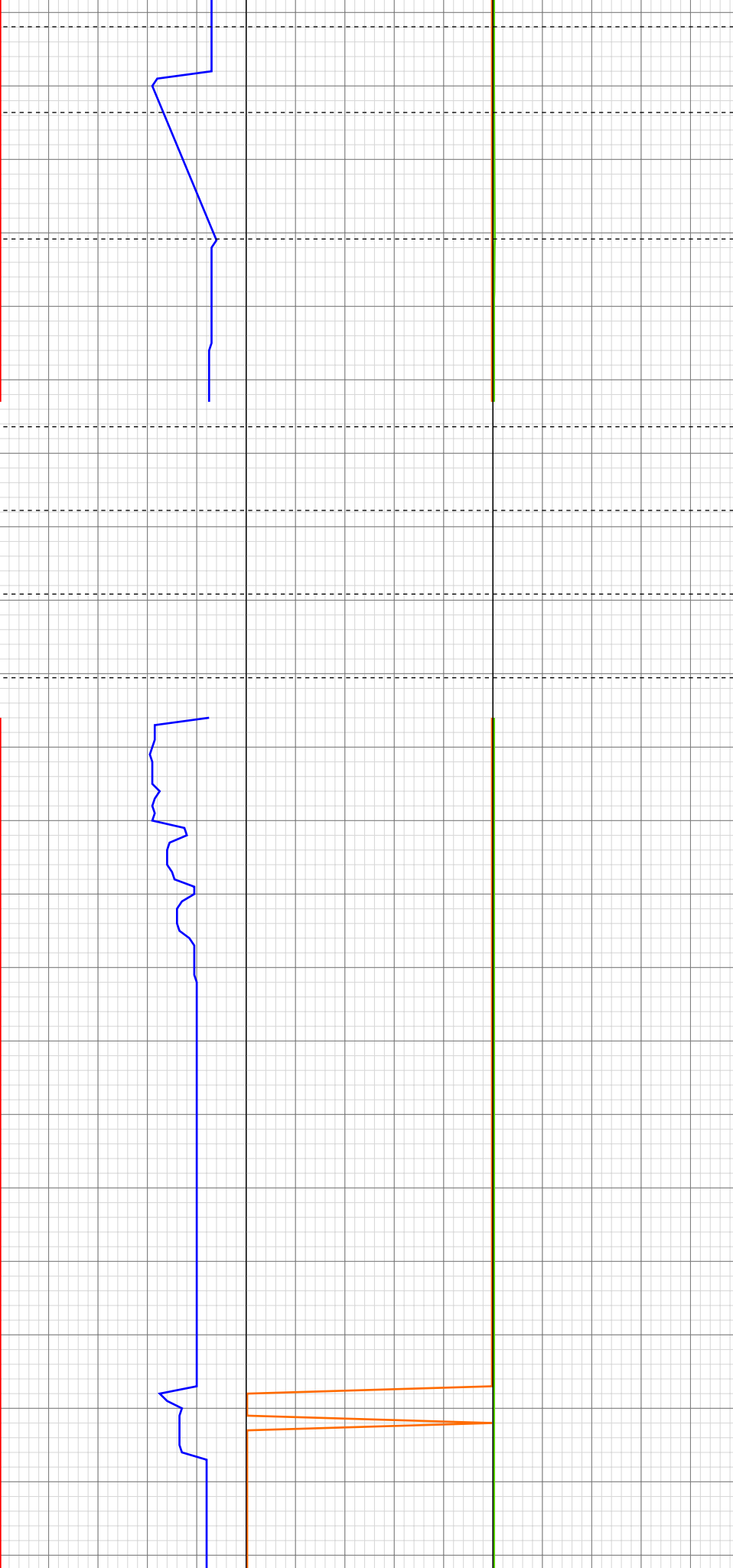
1975.00ft: MUD VIS 45.00  
1975.00ft: MUD WEIGHT 8.70

2015.00ft: ZDIFF from DHC  
2015.00ft: ZWOB from DHC  
2015.15ft: Connection at 2022.5  
2016.00ft: IN TALLY: HOLE DEPTH  
SET TO 2022.5

2040.42ft: SURVEY @ 1967 IN 18.2  
AZ 153.3 TVD 1890

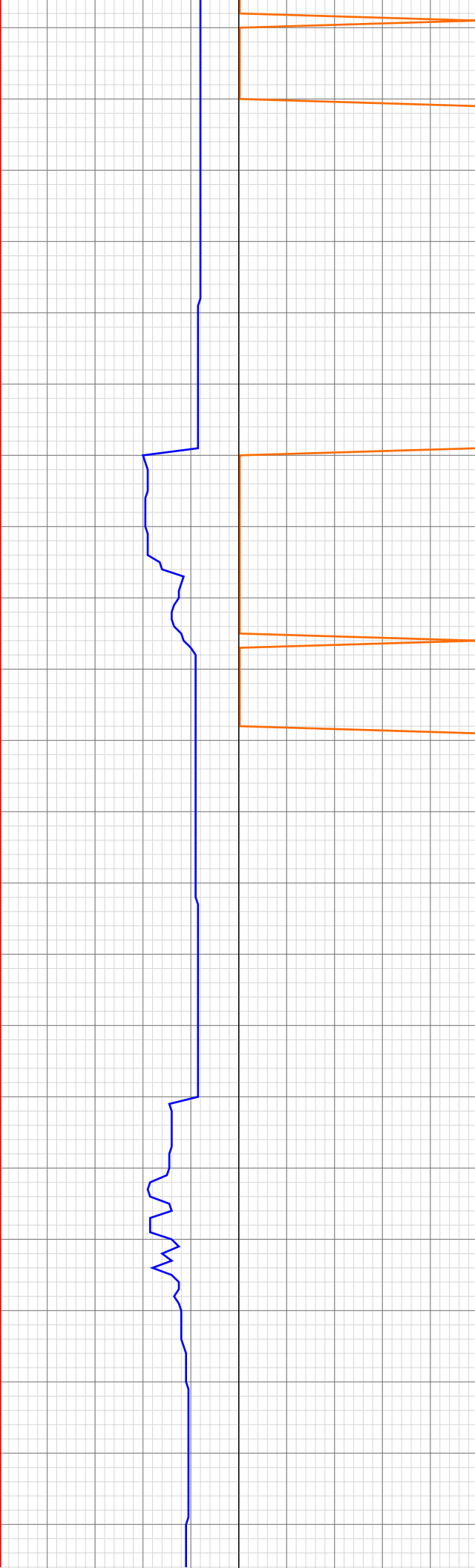
2082.00ft: HOOK LOAD HIGH  
RECALIBRATED  
2082.00ft: HOOK LOAD LOW  
RECALIBRATED  
2082.00ft: HOOK LOAD  
THRESHOLD RECALIBRATED TO  
37  
2082.00ft: ZWOB from DHC  
2082.00ft: ZWOB from DHC  
2082.00ft: ZDIFF from DHC  
2082.00ft: PVT Horn Disabled  
2082.10ft: Connection at 2114.0  
2082.10ft: SURVEY @ 2058 IN 20.7  
AZ 154.1 TVD 1976  
2088.80ft: HOOK LOAD  
THRESHOLD RECALIBRATED TO  
37  
2089.00ft: HOOKLOAD WAS  
RECALIBRATED  
2095.00ft: MUD VIS 48.00  
2095.00ft: MUD WEIGHT 8.80  
2095.48ft: Connection at 2205.6  
2096.00ft: IN TALLY: HOLE DEPTH  
SET TO 2205.6  
2096.00ft: HOOK LOAD  
THRESHOLD RECALIBRATED TO

08:44 2210  
08:46 2300  
09:42 2390  
09:42 2400  
09:44 2490  
09:46 2500  
11:03 2570  
11:03 2660  
11:03 2750  
11:03 2760  
11:04 2850  
11:06 2860  
11:08 2870  
11:10 2880  
11:12 2890  
11:14 2900  
11:15 2910  
11:17 2920  
11:19 2930  
11:25 2940  
11:30 2950  
11:33 2960



2206.00ft: SURVEY @ 2150 IN 18.9  
AZ 154.8 TVD 2063  
2207.00ft: IN TALLY: HOLE DEPTH  
SET TO 2297.2  
2297.16ft: Connection at 2297.2  
2300.00ft: IN TALLY: HOLE DEPTH  
SET TO 2388.6  
2300.00ft: IN TALLY: HOLE DEPTH  
SET TO 2480.0  
2300.00ft: ZDIFF from DHC  
2300.00ft: ZWOB from DHC  
2388.62ft: Connection at 2388.6  
2388.99ft: SURVEY @ 2333 IN 18.9  
AZ 154.0 TVD 2235  
2388.99ft: Connection at 2480.0  
2503.00ft: IN TALLY: HOLE DEPTH  
SET TO 2571.5  
2503.00ft: MUD VIS 50.00  
2503.00ft: MUD WEIGHT 8.85  
2503.00ft: HOOKLOAD WAS  
RECALIBRATED  
2503.00ft: ZWOB from DHC  
2503.00ft: IN TALLY: HOLE DEPTH  
SET TO 2662.9  
2503.00ft: IN TALLY: HOLE DEPTH  
SET TO 2754.4  
2503.00ft: ZDIFF from DHC  
2503.00ft: IN TALLY: HOLE DEPTH  
SET TO 2845.8  
2503.00ft: HOOK LOAD LOW  
RECALIBRATED  
2503.00ft: HOOK LOAD HIGH  
RECALIBRATED  
2503.00ft: HOOK LOAD  
THRESHOLD RECALIBRATED TO  
36  
2503.00ft: ZWOB from DHC  
2571.48ft: SURVEY @ 2516 IN 19.2  
AZ 154.1 TVD 2407 Connection at  
2571.5  
2662.90ft: SURVEY @ 2607 IN 18.0  
AZ 153.5 TVD 2493  
2662.90ft: Connection at 2754.4  
2754.38ft: SURVEY @ 2699 IN 20.4  
AZ 155.3 TVD 2580  
2845.78ft: Connection at 2845.8  
2845.78ft: SURVEY @ 2790 IN 19.5  
AZ 155.5 TVD 2665  
2917.00ft: 046TGAS-Analyzer air  
pressure = zero, check air supply.  
Standby  
2918.00ft: 022TGAS-Trap needs  
service  
2927.30ft: Connection at 2937.3  
2944.22ft: SLIDING  
2945.96ft: SURVEY @ 2882 IN 17.3  
AZ 155.1 TVD 2753

11:36 2970  
11:39 2980  
11:41 2990  
11:44 3000  
11:45 3010  
11:47 3020  
11:53 3030  
11:55 3040  
11:58 3050  
12:01 3060  
12:04 3070  
12:06 3080  
12:08 3090  
12:10 3100  
12:11 3110  
12:17 3120  
12:19 3130  
12:21 3140  
12:23 3150  
12:25 3160  
12:27 3170  
12:29 3180

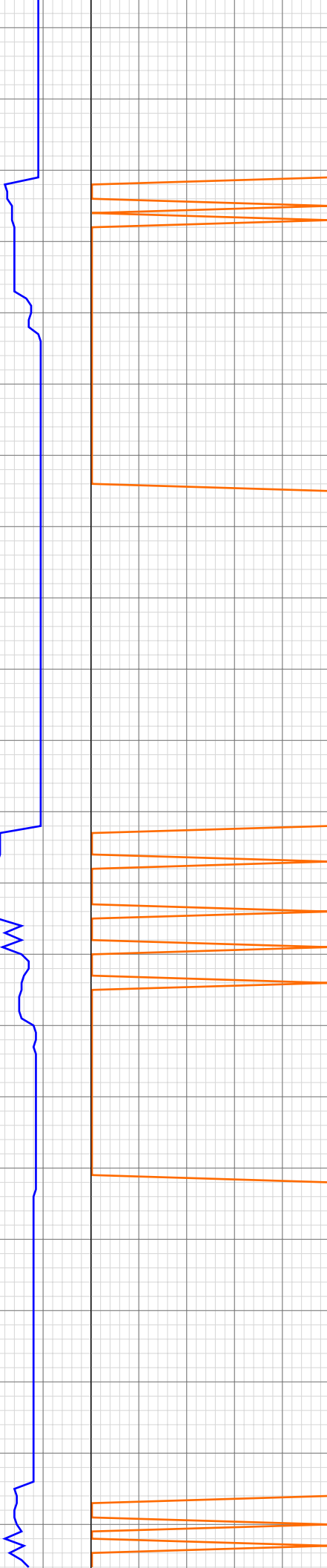


3027.00ft: Connection at 3028.6  
3028.00ft: ZWOB from DHC  
3028.00ft: ZDIFF from DHC  
3028.38ft: SURVEY @ 2973 IN 18.8  
AZ 154.7 TVD 2839

3119.65ft: Connection at 3120.0  
3119.75ft: SURVEY @ 3064 IN 19.5  
AZ 155.2 TVD 2925  
3119.75ft: ZDIFF from DHC

3179.00ft: 021TGAS 03090394  
SW0.27 HW25.00 - 180 days on

12:31 3190  
12:33 3200  
12:35 3210  
12:43 3220  
12:47 3230  
12:50 3240  
12:54 3250  
12:57 3260  
12:58 3270  
13:00 3280  
13:03 3290  
13:05 3300  
13:12 3310  
13:16 3320  
13:20 3330  
13:23 3340  
13:25 3350  
13:27 3360  
13:29 3370  
13:31 3380  
13:33 3390  
13:39 3400



3208.32ft: Connection at 3211.3  
3210.00ft: ZDIFF from DHC  
3210.75ft: SURVEY @ 3156 IN 17.1  
AZ 155.7 TVD 3012

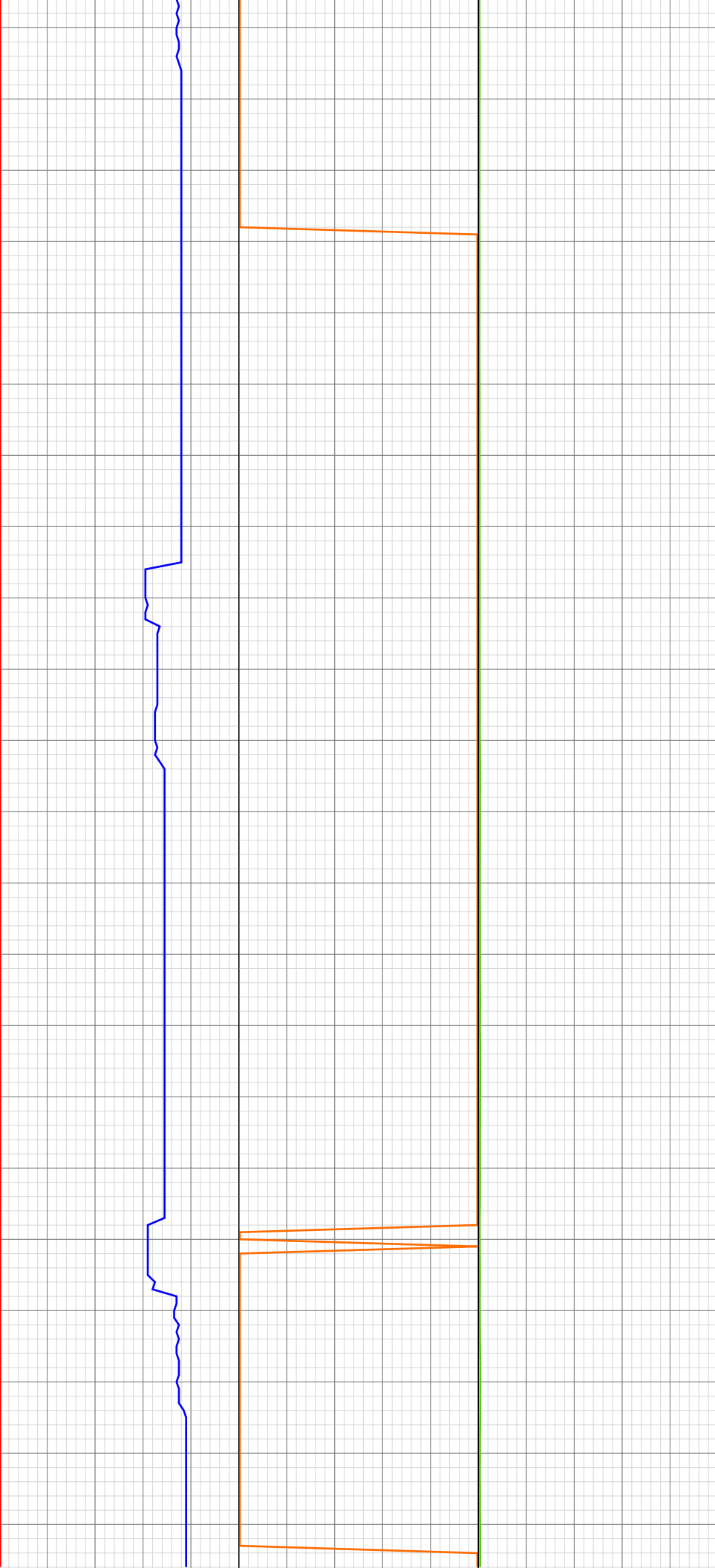
3273.00ft: MUD VIS 50.00  
3273.00ft: MUD WEIGHT 8.95

3301.97ft: Connection at 3302.8  
3302.36ft: SURVEY @ 3247 IN 19  
AZ 147.7 TVD 3099

3392.65ft: Connection at 3394.4  
3393.01ft: ZWOB from DHC  
3393.01ft: ZDIFF from DHC  
3395.96ft: SLIDING

3400.75ft: SURVEY @ 3339 IN 19.7  
AZ 148.3 TVD 3186

13:43 3410  
13:47 3420  
13:50 3430  
13:53 3440  
13:55 3450  
13:57 3460  
14:00 3470  
14:02 3480  
14:08 3490  
14:10 3500  
14:13 3510  
14:15 3520  
14:17 3530  
14:19 3540  
14:21 3550  
14:23 3560  
14:25 3570  
14:31 3580  
14:35 3590  
14:38 3600  
14:41 3610  
14:45 3620



3438.55ft: ROTATING

3482.81ft: Connection at 3485.7  
3483.99ft: ZWOB from DHC  
3483.99ft: ZDIFF from DHC  
3484.84ft: SURVEY @ 3339 IN 20.9  
AZ 153.3 TVD 3185

3525.00ft: MUD VIS 49.00  
3525.98ft: MUD WEIGHT 9.15

3573.10ft: Connection at 3577.3  
3576.61ft: SLIDING

3591.01ft: PVT Horn Enabled

14:47 3630  
14:50 3640  
14:51 3650  
14:54 3660  
15:00 3670  
15:05 3680  
15:09 3690  
15:12 3700  
15:14 3710  
15:16 3720  
15:19 3730  
15:21 3740  
15:23 3750  
15:30 3760  
15:33 3770  
15:37 3780  
15:40 3790  
15:44 3800  
15:46 3810  
15:48 3820  
15:50 3830  
15:53 3840

3626.02ft: ROTATING

3666.99ft: ZDIFF from DHC  
3667.16ft: Connection at 3668.8  
3669.00ft: SLIDING SURVEY @ 3613  
IN 20.4 AZ 154 TVD 3443

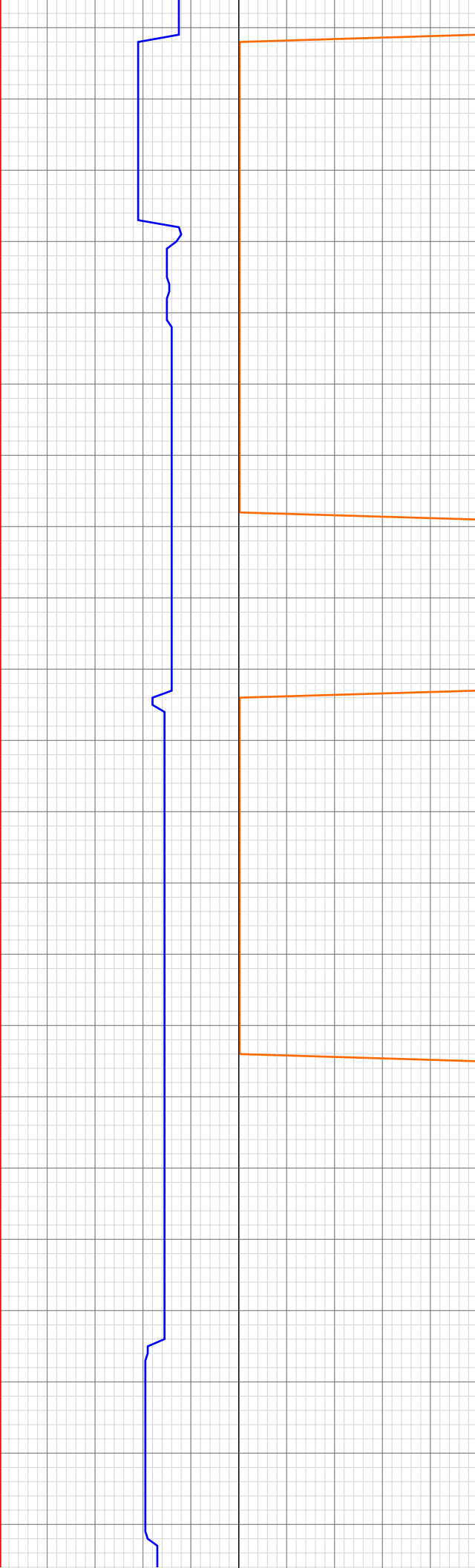
3756.86ft: Connection at 3760.2

3761.81ft: SURVEY @ 3705 INC 21.6  
AZI 155

3791.01ft: MUD WEIGHT 9.15  
3791.50ft: MUD VIS 43.00

3844.88ft: Connection at 3851.5

15:54 3850  
16:06 3860  
16:08 3870  
16:11 3880  
16:15 3890  
16:17 3900  
16:20 3910  
16:24 3920  
16:26 3930  
16:28 3940  
16:36 3950  
16:39 3960  
16:42 3970  
16:46 3980  
16:50 3990  
16:53 4000  
16:55 4010  
16:58 4020  
17:01 4030  
17:27 4040  
17:30 4050  
17:32 4060



3844.96ft: Connection at 3851.5

3933.99ft: MUD VIS 43.00  
3935.01ft: MUD WEIGHT 9.10

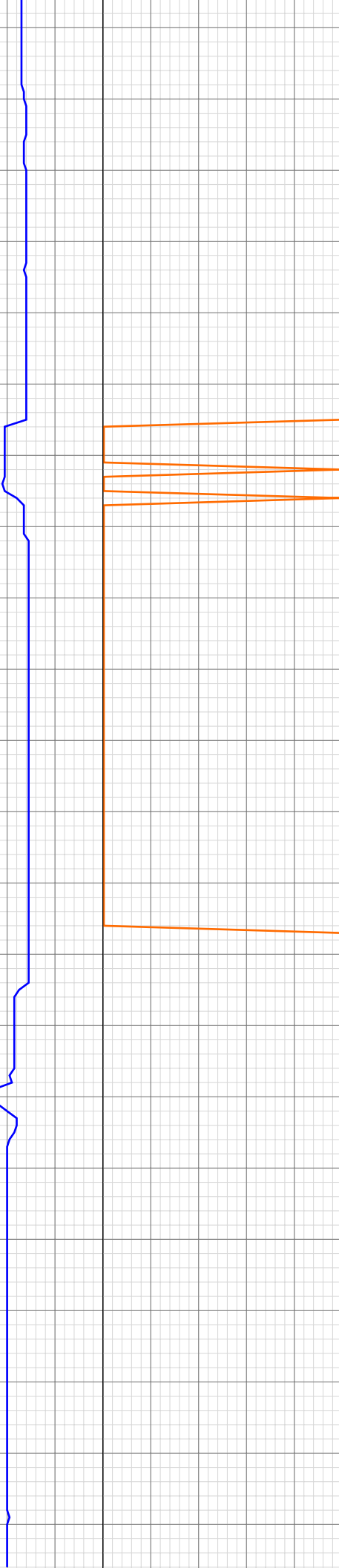
3942.03ft: Connection at 3942.9  
3942.03ft: SURVEY @ 3887 INC 19.1  
AZI 154  
3944.42ft: SLIDING

3994.95ft: ROTATING

4028.67ft: BOP DRILL  
4033.01ft: ZWOB from DHC  
4033.24ft: RIG SERVICE  
4033.24ft: Connection at 4034.4  
4033.24ft: SURVEY 3979 INC 20.8  
AZI 150.6 TVD 3787.44  
4038.45ft: ROTATING

4064.01ft: MUD VIS 44.00  
4064.01ft: MUD WEIGHT 9.00

17:34 4070  
17:37 4080  
17:39 4090  
17:41 4100  
17:43 4110  
17:46 4120  
17:55 4130  
18:02 4140  
18:05 4150  
18:09 4160  
18:12 4170  
18:17 4180  
18:22 4190  
18:26 4200  
18:29 4210  
18:40 4220  
18:43 4230  
18:44 4240  
18:46 4250  
18:48 4260  
18:51 4270  
18:54 4280



4124.02ft: ZDIFF from DHC  
4124.67ft: Connection at 4126.0  
4127.17ft: SLIDING

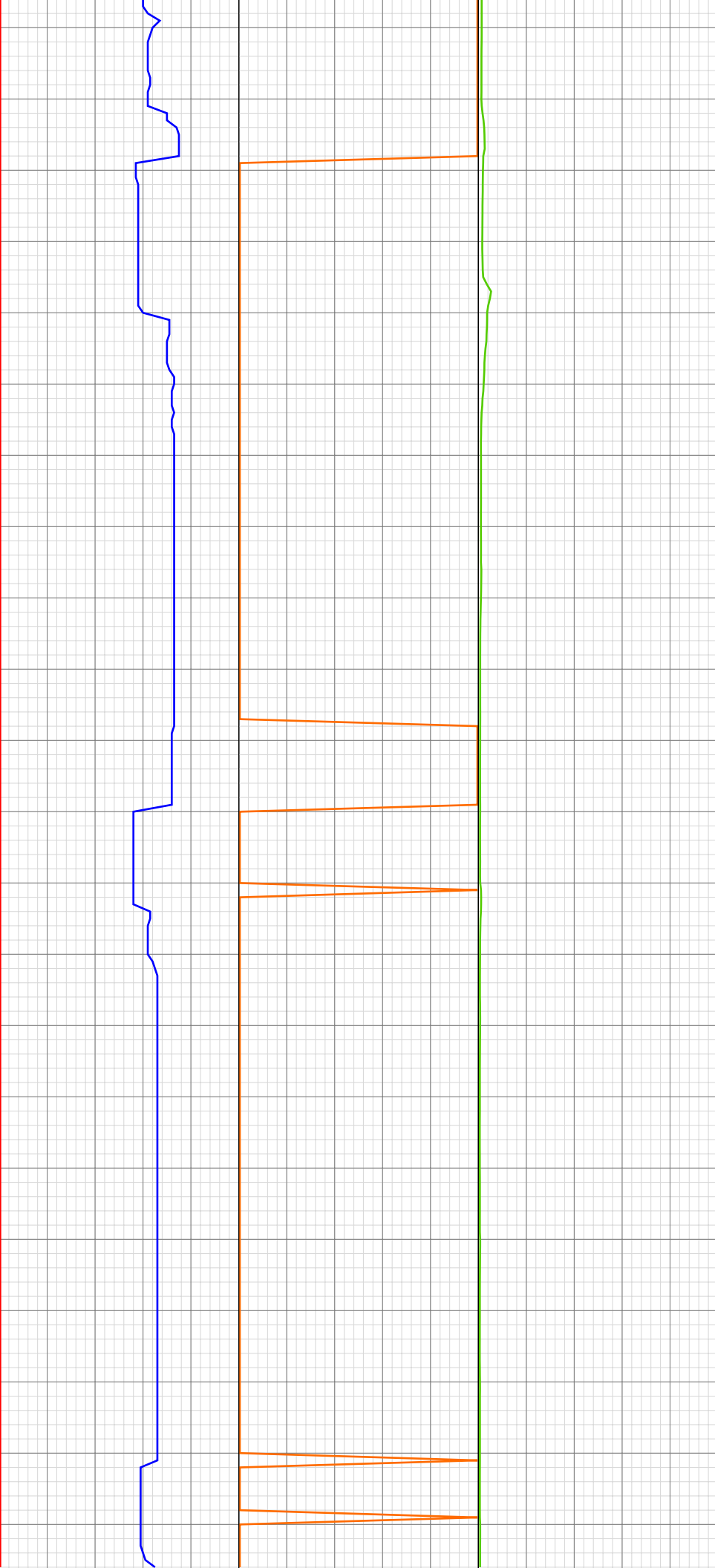
4136.81ft: SURVEY @ 4071 INC 18.9  
AZI 150.1

4178.48ft: CLEAN OUT SAND TRAP

4197.44ft: ROTATING

4215.88ft: BOP DRILL  
4215.88ft: SURVEY @ 4162 INC 18.8  
AZI 147 TVD 3960.09 ROTATING  
4215.88ft: Connection at 4217.6

18:56 4290  
18:58 4300  
19:15 4310  
19:18 4320  
19:22 4330  
19:25 4340  
19:29 4350  
19:32 4360  
19:35 4370  
19:40 4380  
19:43 4390  
19:50 4400  
19:54 4410  
19:57 4420  
20:00 4430  
20:03 4440  
20:07 4450  
20:10 4460  
20:13 4470  
20:17 4480  
20:25 4490  
20:29 4500



4306.99ft: ZDiffPressure from  
SideKick sk-06-03-3103  
4307.38ft: CLEAN OUT POSSUM  
BELLIES  
4307.38ft: SURVEY @ 4254 INC 17.8  
AZI 146.6  
4307.38ft: Connection at 4309.1  
4307.38ft: SLIDING

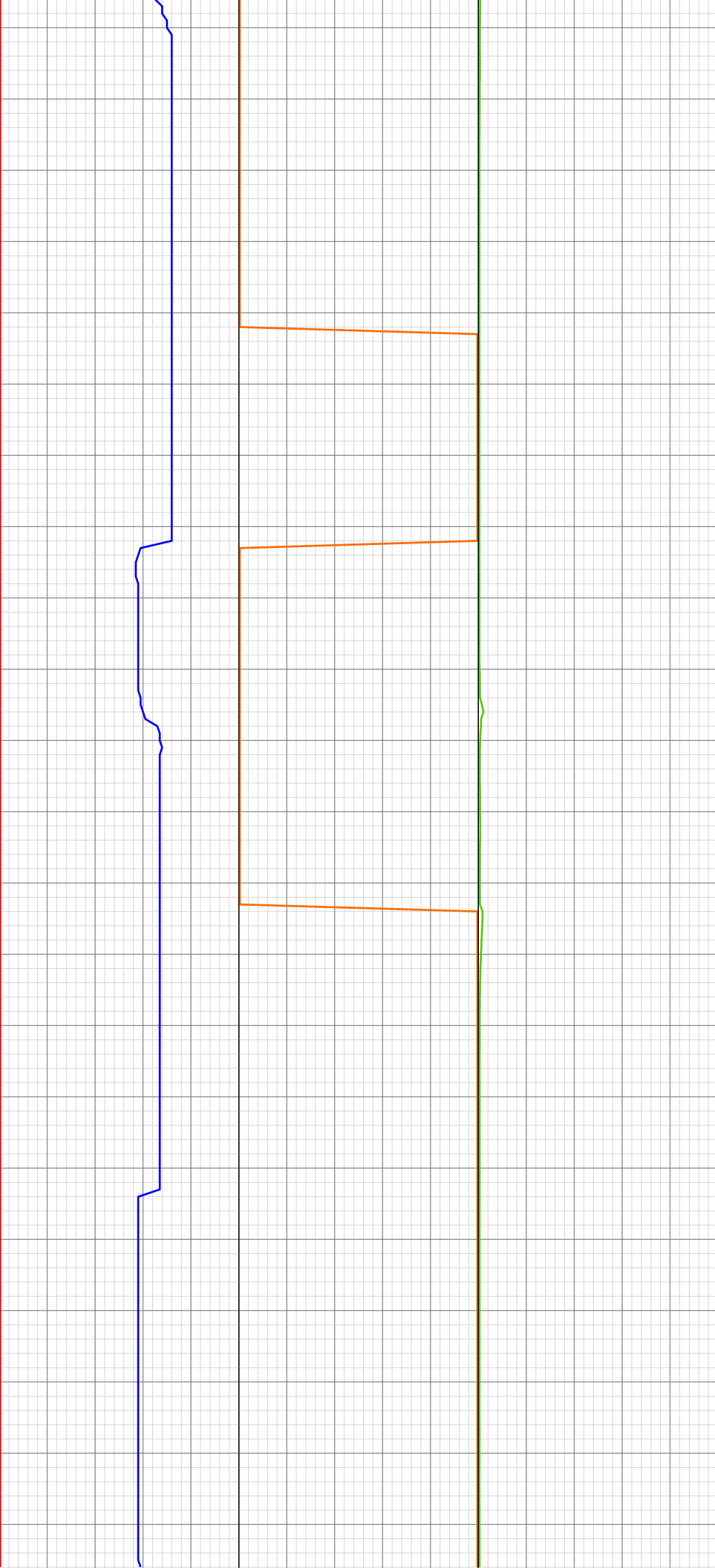
4387.01ft: MUD VIS 43.00  
4387.60ft: ROTATING  
4387.99ft: MUD WEIGHT 8.90

4399.21ft: Connection at 4400.5  
4402.13ft: SURVEY @ 4345 INC 15.5  
AZI 150  
4407.19ft: SLIDING

4489.99ft: ZDIFF from DHC  
4490.12ft: Connection at 4492.0  
4490.12ft: SLIDING  
4492.29ft: BUILD MUD

4503.77ft: SURVEY @ 4437 INC 16.3

20:33 4510  
20:37 4520  
20:42 4530  
20:45 4540  
20:48 4550  
20:52 4560  
20:54 4570  
20:56 4580  
21:06 4590  
21:13 4600  
21:18 4610  
21:23 4620  
21:31 4630  
21:37 4640  
21:38 4650  
21:40 4660  
21:42 4670  
21:49 4680  
21:51 4690  
21:53 4700  
21:55 4710  
21:57 4720



AZI 161.3

4552.00ft: ZWOB from SideKick  
sk-06-03-3103  
4552.13ft: ROTATING  
4552.99ft: MUD VIS 46.00  
4554.00ft: MUD WEIGHT 8.90

4581.59ft: SURVEY @ 4528 INC 18.6  
AZI 156.1 SLIDING Connection at  
4583.4

4632.35ft: ROTATING

4650.66ft: BUILD VOLUME

4672.87ft: Connection at 4674.9  
4672.87ft: SURVEY @ 4619 INC 21.0  
AZI 150.8 TVD 4395.55 ROTATING

4689.01ft: MUD VIS 45.00  
4689.01ft: MUD WEIGHT 8.90

21:59 4730  
22:01 4740  
22:02 4750  
22:04 4760  
22:12 4770  
22:17 4780  
22:22 4790  
22:27 4800  
22:33 4810  
22:37 4820  
22:40 4830  
22:42 4840  
22:43 4850  
22:51 4860  
22:53 4870  
22:55 4880  
22:57 4890  
22:59 4900  
23:01 4910  
23:03 4920  
23:05 4930  
23:08 4940



4764.01ft: ZDiffPressure from  
SideKick sk-06-03-3103  
4764.21ft: Connection at 4766.3  
4764.21ft: SLIDING  
4770.41ft: SURVEY @ 4711 INC 19.4  
AZI 151.0

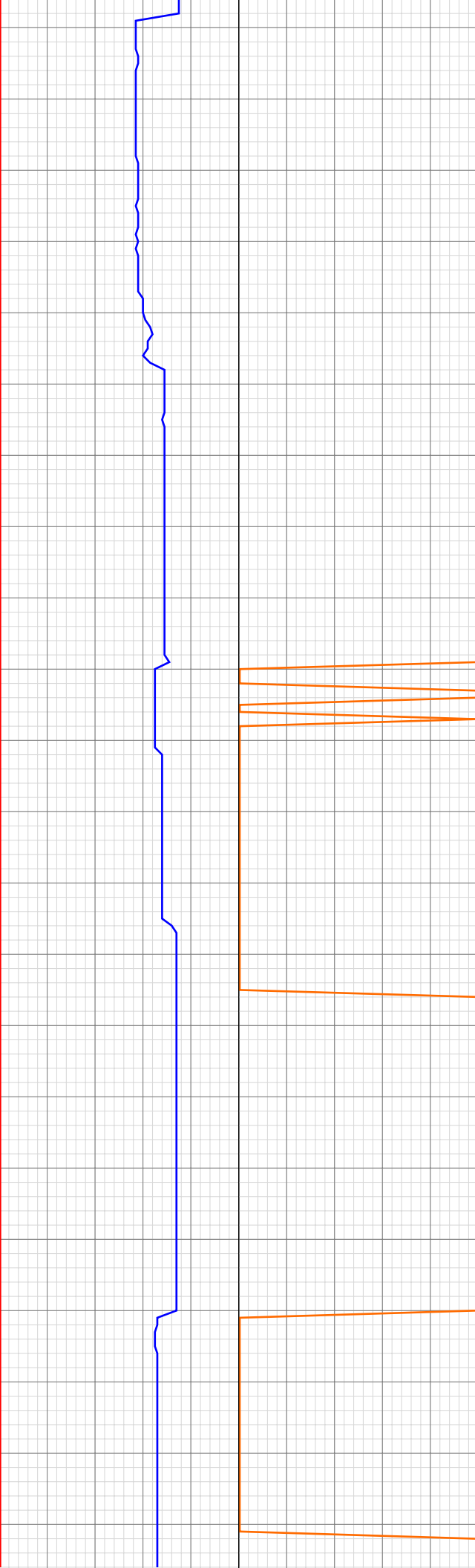
4824.84ft: ROTATING

4855.77ft: Connection at 4857.9  
4855.77ft: ROTATING

4860.83ft: SURVEY @ 4802' 21.8  
INC 153.6 AZI

23:15 4950  
23:17 4960  
23:19 4970  
23:22 4980  
23:24 4990  
23:26 5000  
23:28 5010  
23:30 5020  
23:32 5030  
23:42 5040  
23:46 5050  
23:51 5060  
23:55 5070  
00:00 5080  
00:03 5090  
00:05 5100  
00:07 5110  
00:08 5120  
00:18 5130  
00:24 5140  
00:30 5150  
00:36 5160

Sep 29, 2010



4947.21ft: Connection at 4949.5  
4947.21ft: SURVEY @ 4894 INC 20.8  
AZI 153.4 TVD 4652.78 ROTATING

4985.99ft: MUD VIS 43.00  
4985.99ft: MUD WEIGHT 8.90

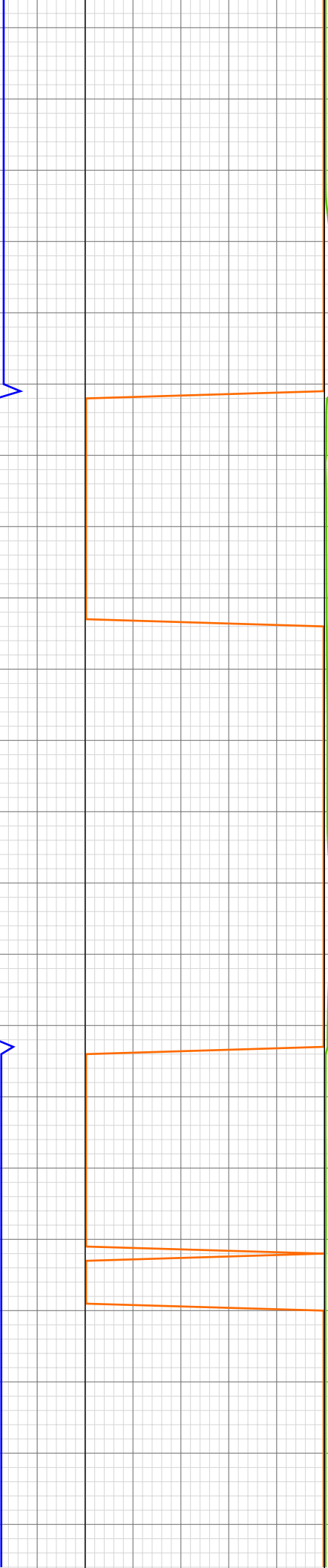
5038.42ft: Connection at 5041.0  
5038.42ft: SLIDING  
5038.42ft: SURVEY @ 4985 INC 19.4  
AZI 155.5

5087.07ft: ROTATING

5129.00ft: ZDiffPressure from  
SideKick sk-06-03-3103  
5129.99ft: Connection at 5132.4  
SURVEY @ 5077 INC 14.2 AZI 154.9  
5129.99ft: SLIDING

5161.52ft: ROTATING

00:39 5170  
00:41 5180  
00:42 5190  
00:44 5200  
00:46 5210  
00:48 5220  
01:00 5230  
01:05 5240  
01:09 5250  
01:12 5260  
01:14 5270  
01:16 5280  
01:18 5290  
01:19 5300  
01:20 5310  
01:31 5320  
01:35 5330  
01:39 5340  
01:43 5350  
01:44 5360  
01:46 5370  
01:47 5380



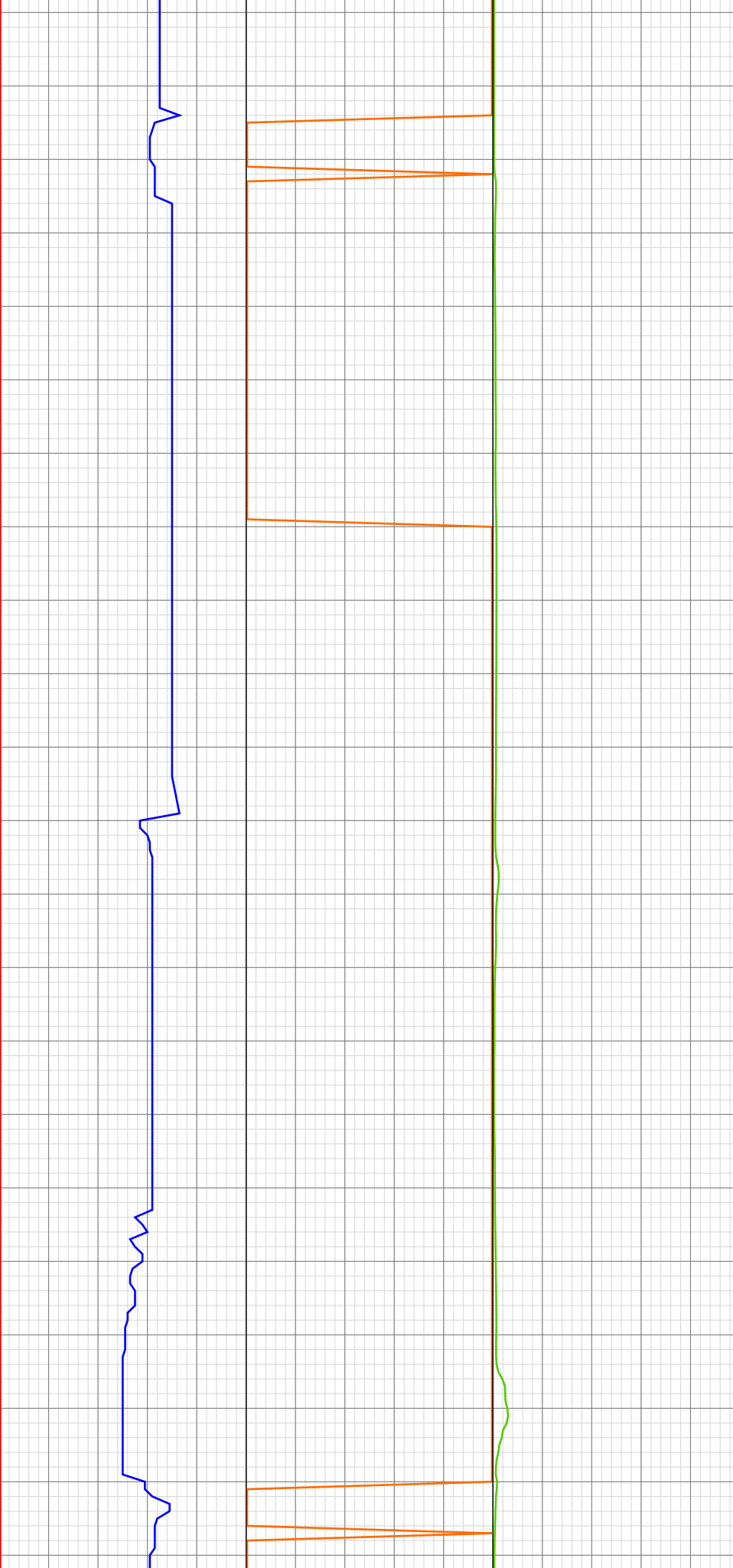
5220.70ft: Connection at 5223.9  
5220.70ft: SURVEY @ 5168 INC 10.9  
AZI 157.1  
5220.70ft: SLIDING

5254.43ft: ROTATING

5312.01ft: MUD VIS 45.00  
5312.01ft: MUD WEIGHT 8.90  
5312.83ft: SURVEY @ 5260 INC 8.5  
AZI 153.7 SLIDING  
5312.83ft: Connection at 5315.3  
5313.03ft: ZDiffPressure from  
SideKick sk-06-03-3103

5349.08ft: ROTATING

01:49 5390  
01:50 5400  
02:01 5410  
02:05 5420  
02:09 5430  
02:12 5440  
02:15 5450  
02:18 5460  
02:20 5470  
02:21 5480  
02:23 5490  
02:32 5500  
02:37 5510  
02:40 5520  
02:44 5530  
02:48 5540  
02:52 5550  
02:56 5560  
03:00 5570  
03:06 5580  
03:19 5590  
03:22 5600



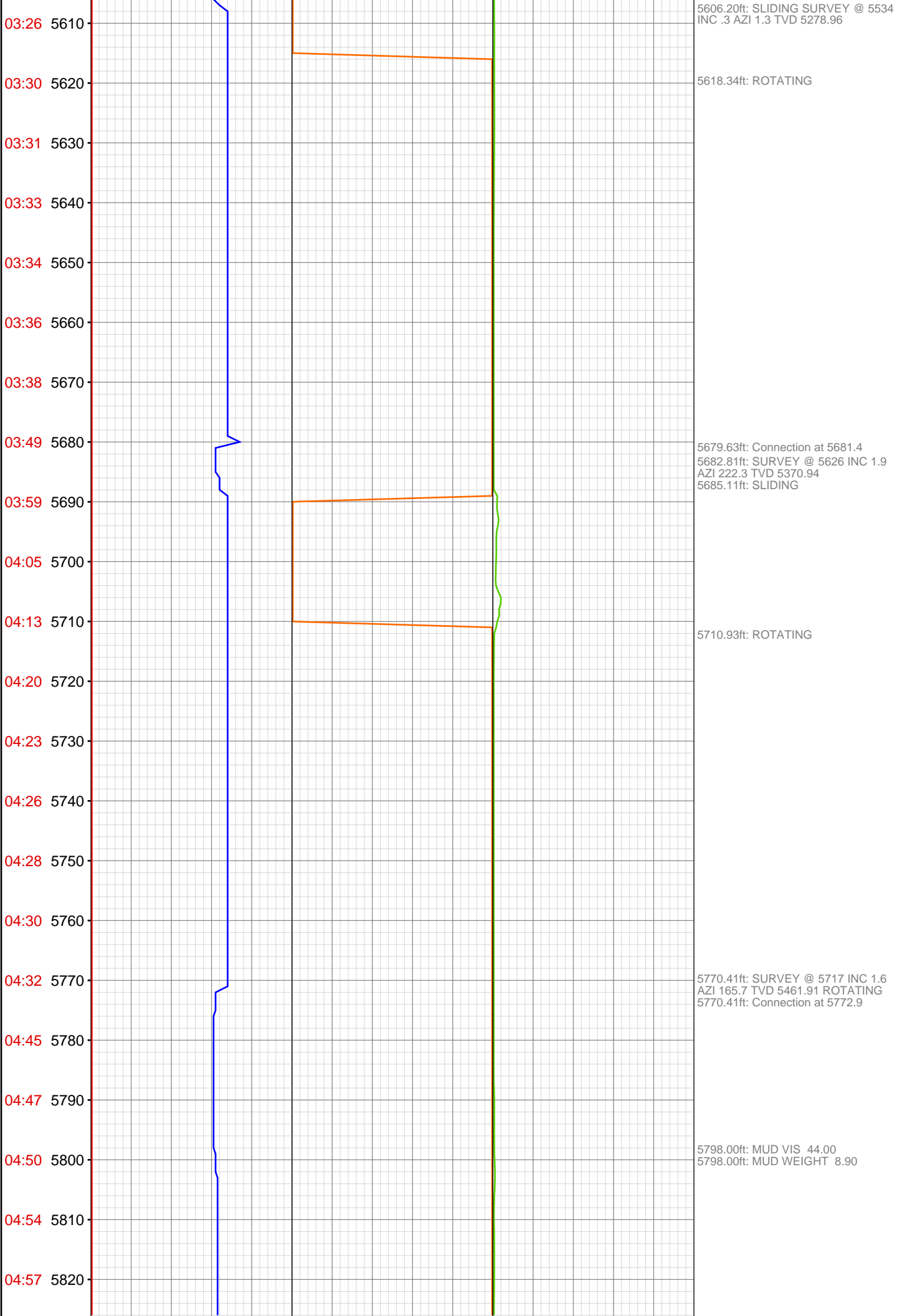
5402.99ft: ZDiffPressure from SideKick sk-06-03-3103  
5403.74ft: SURVEY @ 5351 INC 5.1  
AZI 149.2 Connection at 5406.8  
5403.74ft: SLIDING

5457.87ft: ROTATING

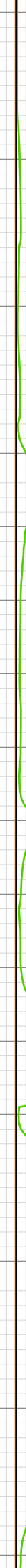
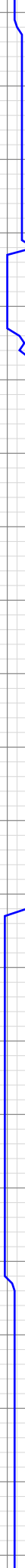
5494.00ft: ZDIFF from DHC  
5494.00ft: ZWOB from DHC  
5494.00ft: IN TALLY: HOLE DEPTH SET TO 5498.3  
5494.16ft: Connection at 5498.3  
5494.16ft: SURVEY @ 5443 INC 1.4  
AZI 103.9 ROTATING BACK OFF PUMPS,WT,ROT

5585.99ft: MUD VIS 46.00  
5585.99ft: MUD WEIGHT 9.00  
5589.01ft: ZDiffPressure from SideKick sk-06-03-3103

5598.82ft: Connection at 5589.9



05:00 5830  
05:04 5840  
05:06 5850  
05:09 5860  
05:21 5870  
05:25 5880  
05:28 5890  
05:32 5900  
05:36 5910  
05:38 5920  
05:43 5930  
05:47 5940  
05:49 5950  
05:59 5960  
06:02 5970  
06:04 5980  
06:07 5990  
06:09 6000  
06:12 6010  
06:15 6020  
06:19 6030  
06:23 6040



5861.16ft: ROTATING  
5861.16ft: Connection at 5864.3  
5861.16ft: SURVEY @ 5809 INC 1.7  
AZI 180.2 TVD 5553.87

5880.15ft: BUILD VOLUME

5951.12ft: Connection at 5955.9  
5953.22ft: SURVEY @ 5900 INC 1.7  
AZI 188.9 TVD 5644.83 ROTATING

6041.99ft: ZWOB from DHC  
6041.99ft: ZWOB from SideKick  
sk-06-03-3103  
6041.99ft: ZDiffPressure from  
SideKick sk-06-03-3103  
6042.19ft: Connection at 6047.4

06:36 6050  
06:39 6060  
06:42 6070  
06:46 6080  
06:49 6090  
06:52 6100  
06:55 6110  
06:58 6120  
07:02 6130  
07:11 6140  
07:15 6150  
07:18 6160  
07:25 6170  
07:42 6180  
07:46 6190  
07:49 6200  
07:53 6210  
07:58 6220  
08:02 6230  
08:28 6240  
08:38 6250  
08:50 6260

6042.19ft: SURVEY @ 5992 IN 1.8  
AZ 200.5 TVD 5736  
6042.19ft: ROTATING

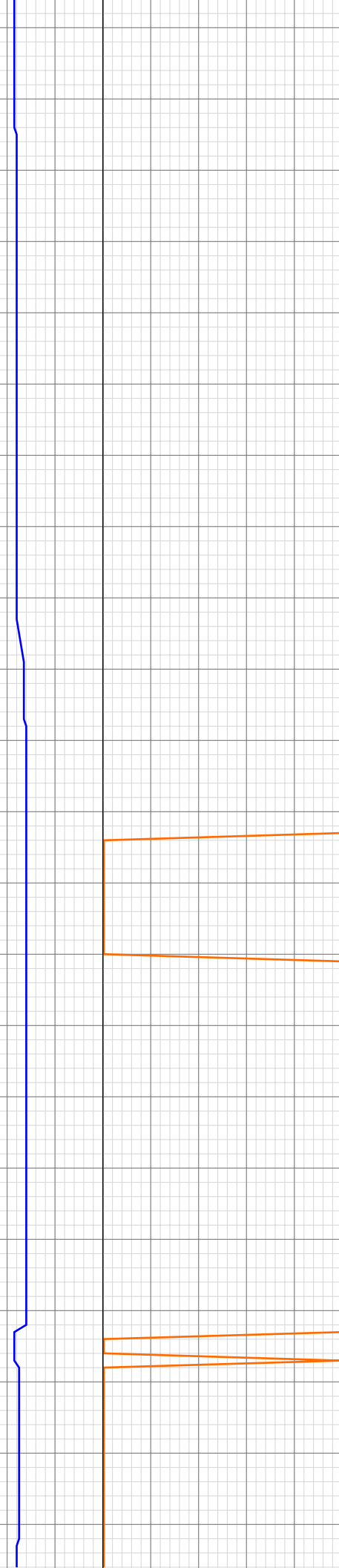
6133.01ft: IN TALLY: HOLE DEPTH  
SET TO 6138.8  
6133.01ft: PVT Horn Disabled  
6133.01ft: ZDiffPressure from  
SideKick sk-06-03-3103  
6138.85ft: Connection at 6138.8  
6138.85ft: PUMP SWEEP  
6138.85ft: SURVEY @ 6083 IN 1.8  
AZ 220.5 TVD 5827  
6141.01ft: PVT Horn Enabled  
6146.19ft: ZERO ALL PUMPS from  
SideKick sk-05-05-1268

6168.77ft: SLIDING

6179.99ft: MUD VIS 0.43  
6179.99ft: MUD WEIGHT 9.00  
6179.99ft: ZWOB from SideKick  
sk-06-03-3103  
6183.73ft: ROTATING

6230.25ft: SURVEY @ 6230 IN 1.5  
AZ 215.8 TVD 5974  
6230.25ft: B.O.P DRILL 2 MIN. 40  
SEC.  
6230.25ft: Connection at 6230.3  
6230.25ft: ZDiffPressure from  
SideKick sk-06-03-3103  
6231.00ft: IN TALLY: HOLE DEPTH  
SET TO 6230.3  
6231.00ft: PVT Horn Disabled  
6231.00ft: ZWOB from SideKick  
sk-06-03-3103  
6232.15ft: SLIDING

6254.99ft: PVT Horn Enabled



09:01 6270  
09:13 6280  
09:24 6290  
09:33 6300  
09:37 6310  
09:42 6320  
09:52 6330  
09:55 6340  
09:59 6350  
10:02 6360  
10:08 6370  
10:13 6380  
10:16 6390  
10:19 6400  
10:22 6410  
10:36 6420  
10:40 6430  
10:43 6440  
10:47 6450  
10:52 6460  
10:58 6470  
11:05 6480



6274.02ft: MUD WEIGHT 9.00  
6274.93ft: MUD VIS 0.40

6292.09ft: ROTATING  
6294.00ft: ZERO ALL PUMPS from  
SideKick sk-06-03-3868

6320.01ft: ZWOB from SideKick  
sk-06-03-3103  
6320.96ft: Connection at 6321.8  
6320.96ft: ROTATING  
6320.96ft: ZDiffPressure from  
SideKick sk-06-03-3103  
6326.84ft: SURVEY @ 6266 IN 1.9  
AZ 133.0 TVD 6010

6377.00ft: MUD VIS 0.40  
6377.30ft: MUD WEIGHT 9.00

6410.99ft: IN TALLY: HOLE DEPTH  
SET TO 6413.2  
6410.99ft: PVT Horn Disabled  
6410.99ft: ZWOB from SideKick  
sk-06-03-3103  
6410.99ft: ZWOB from SideKick  
sk-06-03-3103  
6413.22ft: SURVEY @ 6358 IN 2.8  
AZ 126.0 TVD 6102  
6413.22ft: Connection at 6413.2  
6419.00ft: ZERO ALL PUMPS from  
SideKick sk-05-05-1268

6442.45ft: PUMP SWEEP

6474.02ft: MUD VIS 0.41  
6474.02ft: MUD WEIGHT 9.00

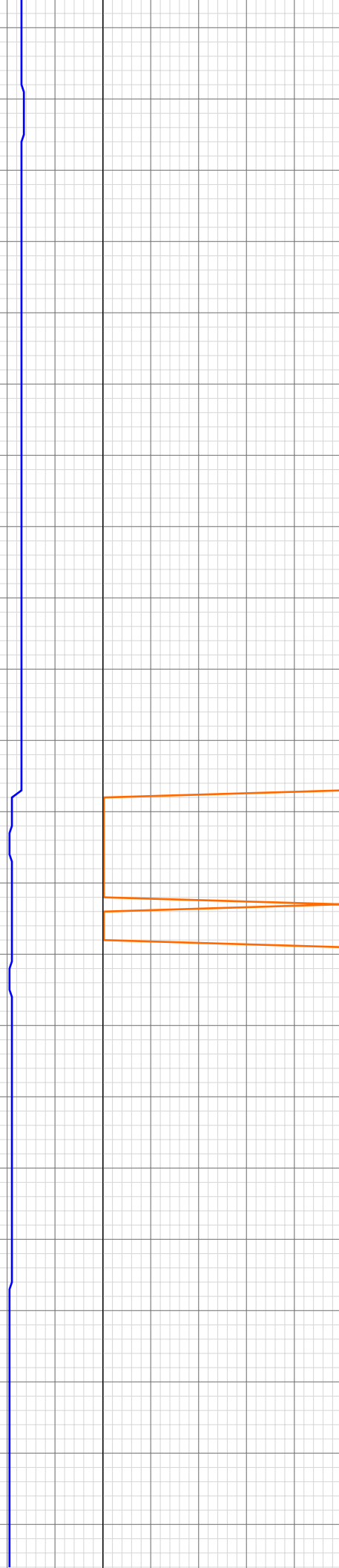
11:13 6490  
11:17 6500  
11:28 6510  
11:34 6520  
11:38 6530  
11:42 6540  
11:45 6550  
11:50 6560  
11:54 6570  
12:00 6580  
12:05 6590  
12:25 6600  
12:42 6610  
12:59 6620  
13:06 6630  
13:12 6640  
13:15 6650  
13:18 6660  
13:20 6670  
13:22 6680  
13:36 6690  
13:40 6700

6504.00ft: IN TALLY: HOLE DEPTH  
SET TO 6504.5  
6504.49ft: Connection at 6504.5  
6504.49ft: SURVEY @ 6449 IN 2.2  
AZ 138.0 TVD 6193 ROTATING

6594.00ft: IN TALLY: HOLE DEPTH  
SET TO 6596.1  
6594.00ft: ZDiffPressure from  
SideKick sk-06-03-3103  
6596.10ft: Connection at 6596.1  
6596.10ft: SLIDING  
6602.00ft: 021TGAS 03090394  
SW0.27 HW25.00 - 181 days on

6623.00ft: ZERO ALL PUMPS from  
SideKick sk-05-05-1268  
6623.59ft: PUMP SWEEP

6687.01ft: ZWOB from SideKick  
sk-06-03-3103  
6687.01ft: ZDiffPressure from  
SideKick sk-06-03-3103  
6687.07ft: Connection at 6687.3  
6690.72ft: SURVEY @ 6632 IN .6  
AZ 69.3 TVD 6376  
6693.01ft: PVT Horn Enabled



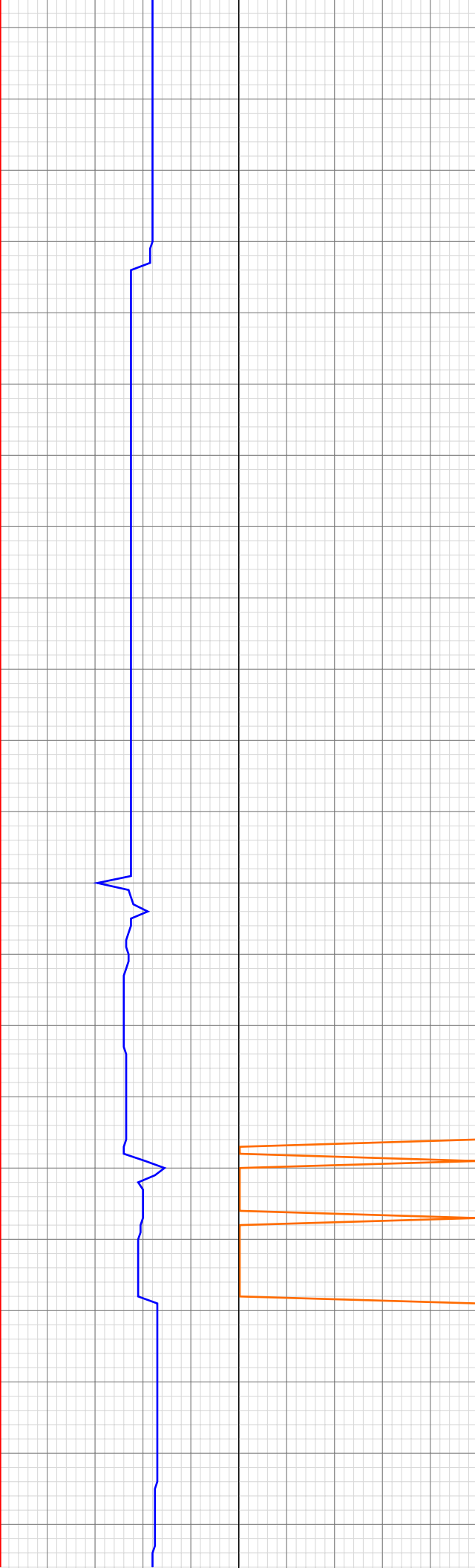
13:46 6710  
13:51 6720  
13:56 6730  
14:00 6740  
14:04 6750  
14:09 6760  
14:14 6770  
14:28 6780  
14:32 6790  
14:38 6800  
14:43 6810  
14:46 6820  
14:51 6830  
14:57 6840  
15:02 6850  
15:07 6860  
15:44 6870  
15:51 6880  
15:59 6890  
16:05 6900  
16:12 6910  
16:17 6920

6747.01ft: MUD VIS 0.40  
6747.01ft: MUD WEIGHT 9.00

6777.99ft: ZDiffPressure from SideKick sk-06-03-3103  
6778.05ft: Connection at 6778.9  
6778.05ft: ZWOB from SideKick sk-06-03-3103  
6778.45ft: SURVEY @ 6723 IN .9  
AZ 89.4 TVD 6467 ROTATING

6869.00ft: PVT Horn Disabled  
6869.00ft: ZWOB from SideKick sk-06-03-3103  
6869.00ft: ZDiffPressure from SideKick sk-06-03-3103  
6870.01ft: RIG SERVICE  
6870.01ft: RIG SERVICE  
6870.01ft: SURVEY @ 6815 IN .5  
AZ 80.6 TVD 6559  
6874.84ft: Connection at 6870.4  
6881.00ft: ZERO ALL PUMPS from SideKick sk-05-05-1268  
6882.68ft: ZERO ALL PUMPS from SideKick sk-05-05-1268  
6883.99ft: PVT Horn Enabled

16:23 6930  
16:28 6940  
16:33 6950  
16:38 6960  
16:52 6970  
16:59 6980  
17:05 6990  
17:11 7000  
17:17 7010  
17:25 7020  
17:33 7030  
17:42 7040  
17:50 7050  
21:26 7060  
21:32 7070  
21:40 7080  
21:50 7090  
21:58 7100  
22:09 7110  
22:14 7120  
22:20 7130  
22:25 7140



6947.01ft: MUD WEIGHT 9.05  
6947.74ft: MUD VIS 0.40

6962.01ft: IN TALLY: HOLE DEPTH  
SET TO 6962.1  
6962.01ft: ZDiffPressure from  
SideKick sk-06-03-3103  
6962.07ft: Connection at 6962.1  
6962.07ft: SURVEY @ 6907 IN .4  
AZ 107.6 TVD 6651

6989.99ft: ZERO ALL PUMPS from  
SideKick sk-05-05-1268

7006.00ft: MUD VIS 0.40  
7006.00ft: MUD WEIGHT 9.10

7052.99ft: ZERO ALL PUMPS from  
SideKick sk-06-03-3103  
7052.99ft: MUD VIS 0.41  
7052.99ft: MUD WEIGHT 9.30  
7053.28ft: CIRC FOR WIPER TRIP  
7053.28ft: FLOW CHECK  
7053.28ft: NO FLOW SURVEY @  
6998 IN .4 AZ 183.3 TVD 6742  
7054.00ft: ZWOB from DHC  
7054.69ft: Connection at 7053.4

7079.99ft: MUD VIS 0.40  
7079.99ft: MUD WEIGHT 9.30

7084.81ft: SLIDING

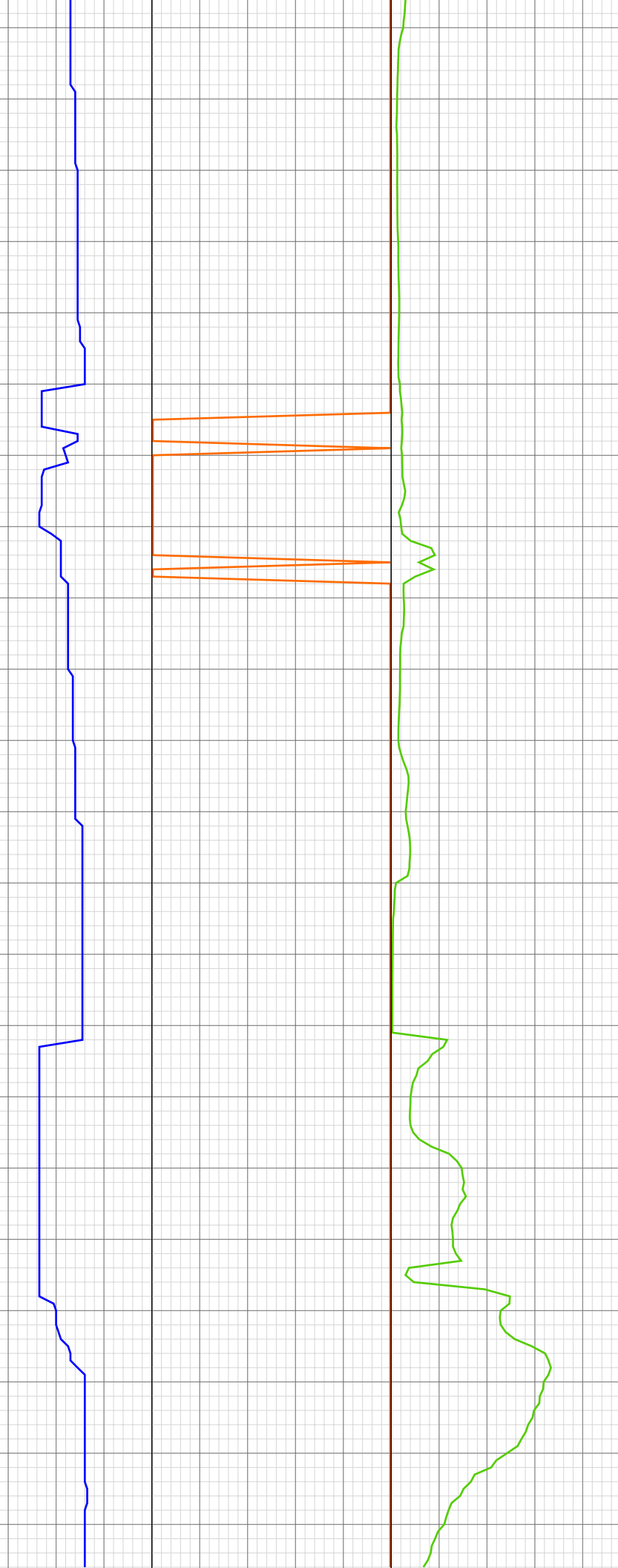
7108.46ft: ROTATING

7145.01ft: IN TALLY: HOLE DEPTH  
SET TO 7145.0

22:36 7150  
22:41 7160  
22:47 7170  
22:54 7180  
23:03 7190  
23:09 7200  
23:15 7210  
23:22 7220  
23:31 7230  
23:40 7240  
23:45 7250  
23:51 7260  
23:56 7270  
Sep 30, 2010  
00:03 7280  
00:10 7290  
00:17 7300  
00:24 7310  
00:31 7320  
00:44 7330  
00:49 7340  
00:54 7350  
00:59 7360

7145.01ft: SURVEY @ 7090 IN .2  
AZ 174.4 TVD 6834  
7145.24ft: Connection at 7145.0  
  
7181.00ft: MUD VIS 0.42  
7181.00ft: MUD WEIGHT 9.30  
7186.06ft: PUMP SWEEP  
  
7235.99ft: IN TALLY: HOLE DEPTH  
SET TO 7236.6  
7235.99ft: ZWOB from SideKick  
sk-06-03-3103  
7236.42ft: Connection at 7236.6  
7236.58ft: SURVEY @ 7181 IN .3  
AZ 88.3 TVD 6925  
7236.58ft: ZDiffPressure from  
SideKick sk-06-03-3103 ZDiffPressure  
from SideKick sk-06-03-3103  
  
7256.00ft: MUD VIS 0.42  
7256.00ft: MUD WEIGHT 9.40  
  
7327.59ft: Connection at 7328.1  
7327.99ft: IN TALLY: HOLE DEPTH  
SET TO 7328.1  
7328.08ft: SURVEY @ 7273 IN .2  
AZ 172.3 TVD 7017  
  
7356.00ft: MUD VIS 0.42  
7356.00ft: MUD WEIGHT 9.50

01:04 7370  
01:09 7380  
01:16 7390  
01:20 7400  
01:25 7410  
01:35 7420  
01:59 7430  
02:18 7440  
02:40 7450  
02:49 7460  
02:55 7470  
03:02 7480  
03:10 7490  
03:15 7500  
03:23 7510  
03:40 7520  
03:45 7530  
03:50 7540  
03:56 7550  
04:02 7560  
04:06 7570  
04:12 7580



7419.00ft: IN TALLY: HOLE DEPTH  
SET TO 7419.6  
7419.06ft: Connection at 7419.6  
7419.59ft: SURVEY @ 7364 IN .7  
AZ 205 TVD 7108  
7424.25ft: SLIDING  
7429.00ft: MUD VIS 0.43  
7429.00ft: MUD WEIGHT 9.50

7447.54ft: ROTATING

7491.01ft: MUD VIS 0.43  
7492.91ft: MUD WEIGHT 9.50

7501.90ft: PUMP SWEEP

7510.89ft: Connection at 7511.2  
7510.99ft: IN TALLY: HOLE DEPTH  
SET TO 7511.2  
7511.16ft: SURVEY @ 7456 IN .30  
AZ .9 TVD 7200  
7511.16ft: SPR

7533.01ft: MUD WEIGHT 9.60  
7533.17ft: MUD VIS 0.47

04:19 7590  
04:22 7600  
04:33 7610  
04:37 7620  
04:41 7630  
04:44 7640  
04:48 7650  
04:53 7660  
04:58 7670  
05:04 7680  
05:08 7690  
05:22 7700  
05:39 7710  
05:56 7720  
06:06 7730  
06:10 7740  
06:13 7750  
06:16 7760  
06:21 7770  
06:26 7780  
06:40 7790  
06:47 7800

7602.00ft: IN TALLY: HOLE DEPTH  
SET TO 7602.7  
7602.46ft: Connection at 7602.7  
7602.69ft: SURVEY @ 7547 INC .3  
AZI 238.3

7614.27ft: ROTATING

7682.09ft: MUD VIS 48 MUD  
WEIGHT 9.70

7693.34ft: Connection at 7694.1  
7694.00ft: IN TALLY: HOLE DEPTH  
SET TO 7694.1  
7694.00ft: ZDIFF from DHC  
7695.74ft: SURVEY @ 7639 INC .8  
AZI 263.1  
7700.89ft: SLIDING

7710.24ft: BOP DRILL

7720.01ft: ROTATING

7739.01ft: MUD VIS 0.47  
7739.17ft: MUD WEIGHT 9.70

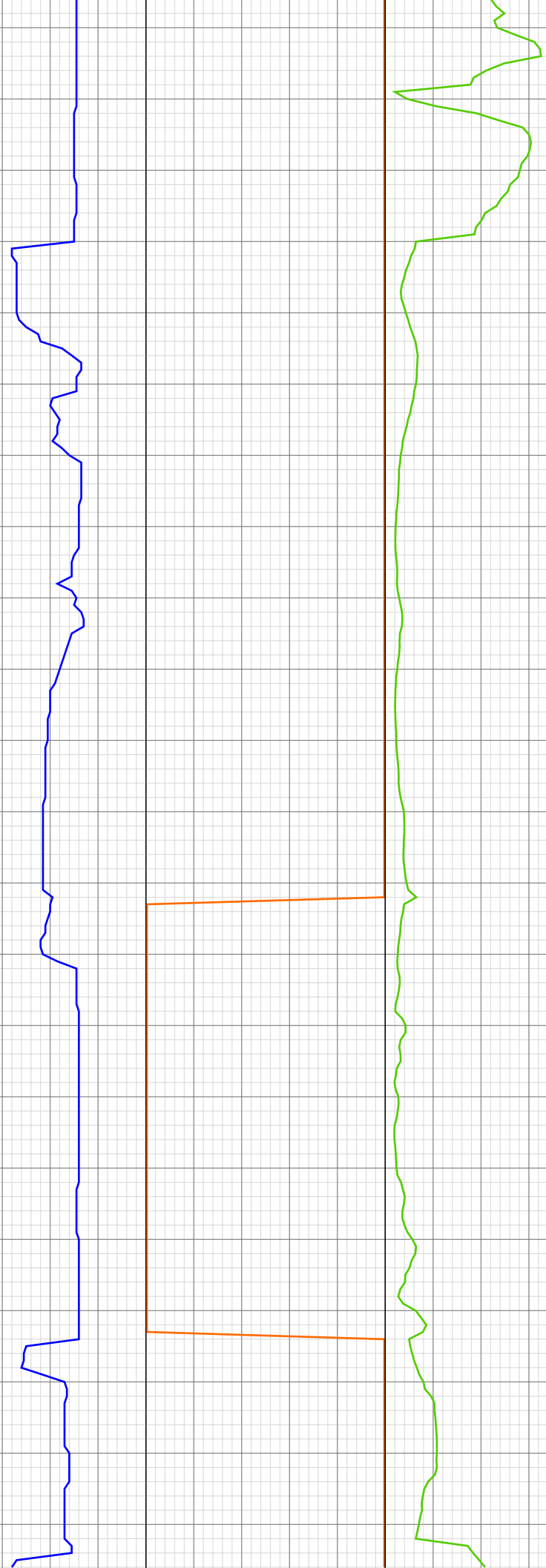
7785.99ft: ZDiffPressure from  
SideKick sk-06-03-3103  
7785.99ft: ZWOB from SideKick  
sk-06-03-3103  
7786.09ft: SURVEY @ 7730 INC .2  
AZI 327.7 TVD 7474.39 ROTATING  
7786.29ft: Connection at 7785.5

06:54 7810  
07:01 7820  
07:09 7830  
07:16 7840  
07:22 7850  
07:27 7860  
07:33 7870  
07:50 7880  
08:00 7890  
08:05 7900  
08:14 7910  
08:20 7920  
08:27 7930  
08:35 7940  
08:41 7950  
08:46 7960  
09:05 7970  
09:23 7980  
09:40 7990  
09:54 8000  
10:15 8010  
10:18 8020



7820.01ft: ZERO ALL PUMPS from SideKick sk-05-05-1268  
7829.00ft: MUD VIS 0.46  
7830.02ft: MUD WEIGHT 9.80  
7877.03ft: TRANSFER TO ACTIVE  
7877.03ft: SURVEY @ 7822 INC .3 AZI 300.7 TVD 7566.39 ROTATING  
7877.03ft: Connection at 7877.0  
7877.99ft: IN TALLY: HOLE DEPTH SET TO 7877.0  
7877.99ft: ZWOB from SideKick sk-06-03-3103  
7877.99ft: ZDiffPressure from SideKick sk-06-03-3103  
7887.01ft: MUD VIS 0.52  
7887.99ft: MUD WEIGHT 9.80  
7964.99ft: MUD VIS 0.47  
7964.99ft: MUD WEIGHT 9.90  
7968.01ft: ZWOB from SideKick sk-06-03-3103  
7968.54ft: Connection at 7968.5  
7969.16ft: SURVEY @ 7913 INC .6 AZI 265.5  
7971.92ft: SLIDING  
8002.00ft: MUD VIS 0.49  
8002.00ft: MUD WEIGHT 9.95  
8008.99ft: ZDiffPressure from SideKick sk-06-03-3103  
8010.01ft: ZWOB from SideKick sk-06-03-3103 PUMP SWEEP  
8010.01ft: ROTATING  
8010.01ft: ZERO ALL PUMPS from SideKick sk-05-05-1268

10:24 8030  
10:33 8040  
10:37 8050  
10:53 8060  
11:00 8070  
11:05 8080  
11:09 8090  
11:13 8100  
11:18 8110  
11:24 8120  
11:31 8130  
11:38 8140  
11:44 8150  
12:11 8160  
12:26 8170  
12:41 8180  
12:52 8190  
13:04 8200  
13:18 8210  
13:31 8220  
13:37 8230  
13:44 8240



8058.01ft: IN TALLY: HOLE DEPTH  
SET TO 8059.9  
8058.99ft: ZDiffPressure from  
SideKick sk-06-03-3103  
8059.88ft: SURVEY @ 8004 INC .6  
AZI 325.9TVDD 7748.39 ROTATING  
Connection at 8059.9  
8059.88ft: ZWOB from SideKick  
sk-06-03-3103

8099.02ft: MUD VIS 0.48  
8099.02ft: MUD WEIGHT 10.00

8150.98ft: PVT Horn Disabled  
8150.98ft: ZWOB from SideKick  
sk-06-03-3103  
8150.98ft: ZDiffPressure from  
SideKick sk-06-03-3103  
8150.98ft: ZDiffPressure from  
SideKick sk-06-03-3103  
8150.98ft: ZWOB from SideKick  
sk-06-03-3103  
8151.80ft: SPOR  
8151.80ft: Connection at 8151.4  
8151.80ft: SURVEY @ 8096 inc .8 azi  
284.4 SLIDING  
8156.00ft: MUD VIS 0.52  
8156.00ft: MUD WEIGHT 10.00  
8160.01ft: PVT Horn Enabled

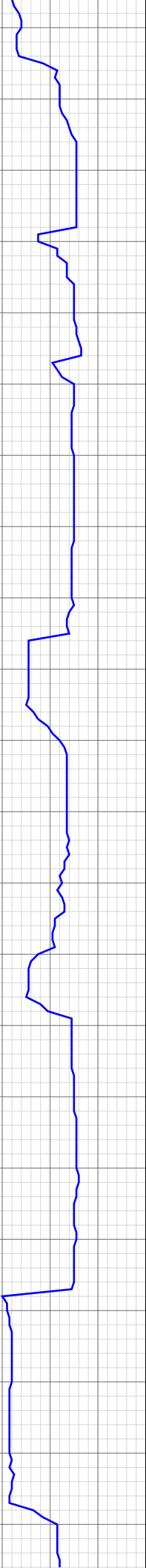
8171.00ft: 021TGAS 03090394  
SW0.27 HW25.00 - 182 days on

8199.02ft: MUD VIS 0.52  
8199.02ft: MUD WEIGHT 10.00

8212.99ft: ZWOB from SideKick  
sk-06-03-3103  
8212.99ft: ZDiffPressure from  
SideKick sk-06-03-3103 ZDiffPressure  
from SideKick sk-06-03-3103  
8213.29ft: ROTATING  
8217.00ft: ZERO ALL PUMPS from  
SideKick sk-05-05-1268

8232.78ft: PUMP SWEEP  
8242.91ft: Connection at 8242.9  
SURVEY @ 8187 INC .2 AZI 266.70  
TVDD 7931.38  
8242.91ft: ZDiffPressure from  
SideKick sk-06-03-3103  
8242.91ft: ROTATING  
8242.91ft: IN TALLY: HOLE DEPTH

14:02 8250  
14:09 8260  
14:15 8270  
14:20 8280  
14:25 8290  
14:30 8300  
14:35 8310  
14:40 8320  
14:47 8330  
15:02 8340  
15:07 8350  
15:13 8360  
15:19 8370  
15:27 8380  
15:46 8390  
15:51 8400  
16:04 8410  
16:19 8420  
17:08 8430  
17:32 8440  
17:48 8450  
18:06 8460



8243.01ft: IN TALLY: HOLE DEPTH  
SET TO 8242.9  
8243.01ft: PVT Horn Disabled  
8243.01ft: ZWOB from SideKick  
sk-06-03-3103  
8254.00ft: MUD VIS 0.53  
8254.00ft: MUD WEIGHT 10.10

8333.99ft: ZDiffPressure from  
SideKick sk-06-03-3103  
8333.99ft: ZWOB from SideKick  
sk-06-03-3103  
8334.88ft: Connection at 8334.3  
8334.88ft: SURVEY @ 8279 INC .7  
AZI 267.7 TVD 8023.37 ROTATING

8347.01ft: MUD VIS 0.50  
8347.01ft: MUD WEIGHT 10.10

8384.29ft: PUMP SWEEP  
8385.99ft: ZERO ALL PUMPS from  
SideKick sk-05-05-1268

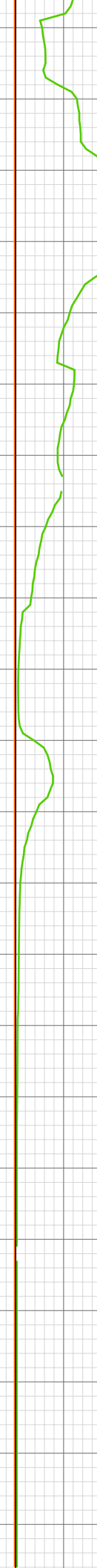
8400.00ft: MUD VIS 0.55  
8400.43ft: MUD WEIGHT 10.05

8404.59ft: SLOW DOWN  
FORMATION CHANGE

8425.98ft: ZWOB from SideKick  
sk-06-03-3103  
8425.98ft: ZWOB from SideKick  
sk-06-03-3103  
8425.98ft: ZDiffPressure from  
SideKick sk-06-03-3103  
8426.35ft: RIG SERVICE  
8426.35ft: Connection at 8425.8  
8426.97ft: SURVEY @ 8370 INC 1.1  
AZI 264.7 TVD 8114.36  
8428.31ft: ROTATING  
8429.99ft: MUD VIS 0.58  
8429.99ft: MUD WEIGHT 10.15  
8431.00ft: PVT Horn Enabled  
8438.88ft: TRANSFER TO ACTIVE

8457.19ft: RESUME DRILLING

18:12 8470  
18:20 8480  
18:25 8490  
18:30 8500  
18:36 8510  
18:50 8520  
18:56 8530  
19:02 8540  
19:07 8550  
19:11 8560  
19:15 8570  
19:21 8580  
19:28 8590  
19:31 8600  
19:42 8610  
19:47 8620  
19:53 8630  
19:57 8640  
20:02 8650  
20:08 8660  
20:14 8670  
20:24 8680

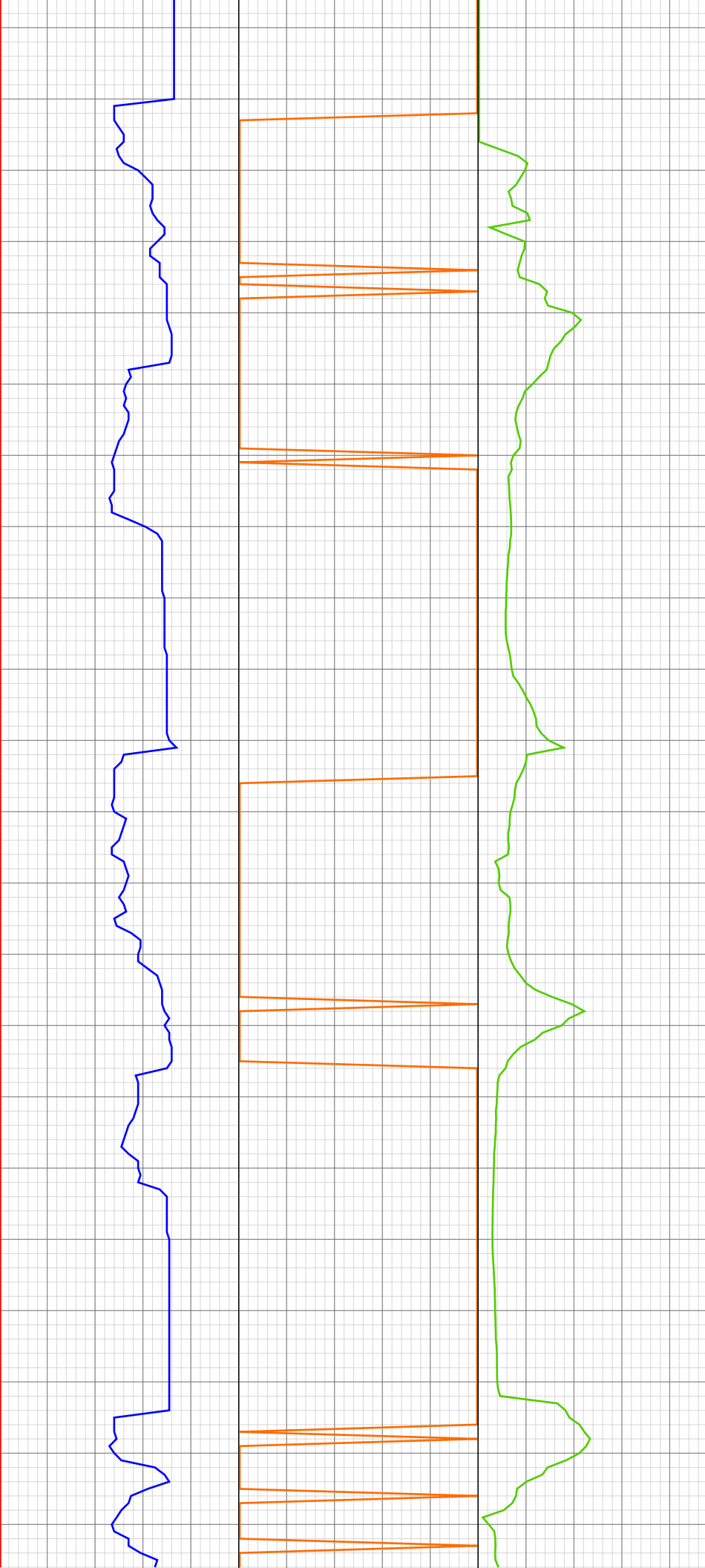


8489.01ft: MUD VIS 0.48  
8489.01ft: MUD WEIGHT 10.20

8517.91ft: Connection at 8517.1  
8518.01ft: IN TALLY: HOLE DEPTH  
SET TO 8517.1  
8518.04ft: SURVEY @ 8162 IN 1.8  
AZ 272.4

8608.76ft: Connection at 8608.6  
8608.99ft: IN TALLY: HOLE DEPTH  
SET TO 8608.6  
8608.99ft: ZDiffPressure from  
SideKick sk-06-03-3103  
8608.99ft: ZWOB from SideKick  
sk-06-03-3103  
8610.43ft: SURVEY @ 8553 IN 2.6  
AZ 271.1 TVD 8297  
8612.01ft: MUD VIS 0.60  
8612.01ft: MUD WEIGHT 10.30

20:30 8690  
20:43 8700  
21:01 8710  
21:21 8720  
21:41 8730  
21:54 8740  
22:07 8750  
22:20 8760  
22:26 8770  
22:31 8780  
22:49 8790  
22:57 8800  
23:15 8810  
23:29 8820  
23:50 8830  
Oct 01, 2010  
00:08 8840  
00:16 8850  
00:22 8860  
00:28 8870  
00:34 8880  
00:57 8890  
01:22 8900



8699.15ft: Connection at 8700.1  
8699.97ft: SURVEY @ 8645 IN 3.4  
AZ 263.7 TVD 8389  
8700.98ft: MUD VIS 0.58  
8700.98ft: MUD WEIGHT 10.30  
8701.80ft: SLIDING

8750.85ft: mud vis 55 mud weight  
10.30  
8750.98ft: ZDiffPressure from  
SideKick sk-06-03-3103  
8751.80ft: ROTATING

8789.99ft: ZWOB from SideKick  
sk-06-03-3103  
8790.95ft: Connection at 8791.6  
8790.95ft: SURVEY @ 8736 IN 3.2  
AZ 262.7 TVD 8479  
8790.95ft: ZDiffPressure from  
SideKick sk-06-03-3103  
8794.13ft: SLIDING

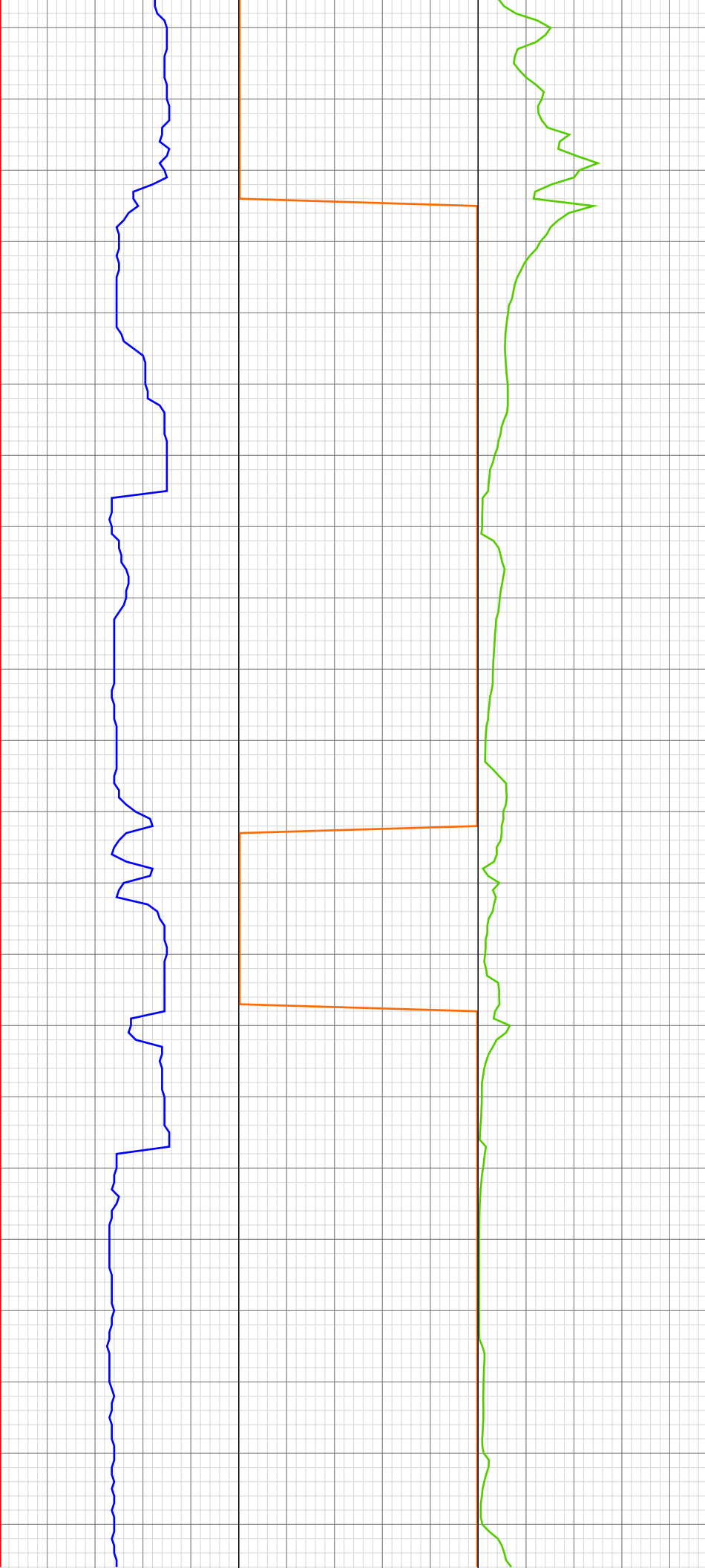
8804.99ft: MUD VIS 0.55  
8804.99ft: MUD WEIGHT 10.40

8827.00ft: MUD VIS 0.54  
8827.00ft: MUD WEIGHT 10.40

8835.53ft: ROTATING

8860.53ft: PUMP OUT CELLAR  
8880.94ft: Connection at 8883.1  
8883.01ft: IN TALLY: HOLE DEPTH  
SET TO 8883.1  
8883.01ft: MUD VIS 0.54  
8883.01ft: MUD WEIGHT 10.40  
8883.10ft: SURVEY @ 8828 IN 3.5  
AZ 259 TVD 8571  
8883.10ft: SLIDING  
8920.01ft: MUD VIS 0.53  
8920.01ft: MUD WEIGHT 10.50  
8920.28ft: MUD WEIGHT 11.50  
8934.68ft: ROTATING  
8935.86ft: TRANSFER TO ACTIVE  
8974.02ft: MUD VIS 0.52  
8974.51ft: MUD WEIGHT 10.60  
8974.64ft: Connection at 8974.5  
8974.64ft: IN TALLY: HOLE DEPTH  
SET TO 8974.5  
9012.57ft: SLOW FOR ROLLINS  
FORMATION  
9021.36ft: CHECKSHOT  
9023.03ft: SLIDING  
9027.00ft: MUD VIS 0.54  
9027.00ft: MUD WEIGHT 10.60  
9048.00ft: MUD VIS 0.60  
9048.00ft: MUD WEIGHT 10.60  
9049.21ft: ROTATING  
9066.01ft: IN TALLY: HOLE DEPTH  
SET TO 9066.1  
9066.04ft: SURVEY @ 9066 IN 4 AZ  
212.1 TVD 8809 SPR

01:35 8910  
01:46 8920  
02:06 8930  
02:26 8940  
02:32 8950  
02:38 8960  
02:45 8970  
03:10 8980  
03:18 8990  
03:20 9000  
03:26 9010  
03:42 9020  
04:13 9030  
04:35 9040  
05:11 9050  
05:24 9060  
05:53 9070  
06:00 9080  
06:06 9090  
06:12 9100  
06:20 9110  
06:30 9120



9066.04ft: SURVEY @ 9011 IN 4.0  
AZ 212.1 TVD 8754  
9066.44ft: Connection at 9066.0  
9067.16ft: RESUME DRILLING  
9110.01ft: MUD VIS 0.71  
9110.53ft: MUD WEIGHT 10.60  
9131.20ft: PUMP OUT CELLAR  
9156.99ft: ZERO ALL PUMPS from  
SideKick sk-05-05-1268  
9156.99ft: ZDiffPressure from  
SideKick sk-06-03-3103  
9157.28ft: Connection at 9157.4  
9157.28ft: ZWOB from SideKick  
sk-06-03-3103  
9164.01ft: ZDIFF from DHC  
9164.01ft: ZDIFF from DHC  
9164.01ft: ZERO ALL PUMPS from  
SideKick sk-06-03-3103  
9164.01ft: BIT DEPTH CHANGED TO  
1770.0 FEET  
9164.01ft: ZERO ALL PUMPS from  
SideKick sk-06-03-3103  
9164.01ft: BIT DEPTH CHANGED TO  
3770.0 FEET  
9164.01ft: MUD VIS 0.41  
9164.01ft: MUD WEIGHT 11.00  
9164.01ft: ZERO ALL PUMPS from  
SideKick sk-06-03-3103  
9164.01ft: ZERO ALL PUMPS from  
SideKick sk-06-03-3103  
9164.01ft: BIT DEPTH CHANGED TO  
7173.0 FEET  
9164.01ft: ZERO ALL PUMPS from  
SideKick sk-06-03-3103  
9164.01ft: PVT Horn Disabled  
9164.01ft: PVT Horn Enabled  
9164.01ft: ZERO ALL PUMPS from  
SideKick sk-06-03-3103  
9164.01ft: ZERO ALL PUMPS from  
SideKick sk-06-03-3103  
9164.01ft: ZERO ALL PUMPS from  
SideKick sk-06-03-3103  
9164.01ft: MUD VIS 0.38  
9164.01ft: ZDIFF from DHC  
9164.01ft: MUD VIS 0.39  
9164.01ft: MUD WEIGHT 10.90  
9164.99ft: ZERO ALL PUMPS from  
SideKick sk-05-05-1268  
9164.99ft: PVT Horn Disabled  
9164.99ft: ZERO ALL PUMPS from  
SideKick sk-06-03-3103  
9164.99ft: ZERO ALL PUMPS from  
SideKick sk-06-03-3103  
9164.99ft: 021TGAS 03090394  
SWO.27 HW25.00 - 183 days on  
9164.99ft: MUD VIS 0.57  
9164.99ft: MUD WEIGHT 10.60  
9164.99ft: ZERO ALL PUMPS from  
SideKick sk-06-03-3103  
9164.99ft: TRANSFER TO ACTIVE  
9164.99ft: PVT Horn Disabled  
9164.99ft: RIG SERVICE  
9164.99ft: FLOW CHECK  
9164.99ft: PUMP SLUG  
9164.99ft: FLOW CHECK  
9164.99ft: FLOW CHECK  
9164.99ft: NO FLOW  
9164.99ft: FLOW CHECK  
9164.99ft: NO FLOW  
9164.99ft: FLOW CHECK  
9164.99ft: JNO FLOW  
9164.99ft: FLOW CHECK  
9164.99ft: NO FLOW  
9164.99ft: ROTATING RUBBER  
9164.99ft: PUMP OUT CELLAR  
9164.99ft: INSTALL RR  
9164.99ft: ZERO ALL PUMPS from  
SideKick sk-06-03-3103  
9164.99ft: FILL PIPE  
9164.99ft: WEIGHT-10/8 VIS-49  
9164.99ft: ZERO ALL PUMPS from  
SideKick sk-06-03-3103  
9164.99ft: ZERO ALL PUMPS from  
SideKick sk-06-03-3103  
9164.99ft: ZERO ALL PUMPS from  
SideKick sk-06-03-3103  
9164.99ft: BUILDING VOLUME  
9164.99ft: PUMP OUT CELLAR  
9164.99ft: FLOW CHECK  
9164.99ft: FLOW CHECK  
9164.99ft: NO FLOW  
9164.99ft: FLOW CHECK  
9164.99ft: NO FLOW  
9164.99ft: FLOW CHECK  
9164.99ft: PULL ROT HEAD  
9164.99ft: ROTATING RUBBER  
9164.99ft: CIRCULATE 5795  
9164.99ft: PUMP CELLER  
9164.99ft: 021TGAS 03090394  
SWO.27 HW25.00 - 185 days on  
9164.99ft: CIR. BU @9151  
9164.99ft: RD CASING CREW  
9164.99ft: MUD WEIGHT 10.90  
9164.99ft: Pump Cement  
9164.99ft: BUMP PLUG  
9165.39ft: SURVEY @ 9110 INC 3.7  
AZI 205 TVD 8853.29  
9165.39ft: MS Gas Detector off-line  
9165.39ft: FLOW CHECK

06:41 9130  
06:52 9140  
07:01 9150  
07:24 9160  
9170



9165.39ft: PUMP SLUG  
9165.39ft: TRIP IN HOLE  
9165.39ft: PUMP OUT CELLAR  
9165.39ft: PUMP SWEEP CIR. BU  
9168.01ft: ZERO ALL PUMPS from  
SideKick sk-06-03-3103  
9168.01ft: PVT Horn Enabled  
9168.01ft: MUD VIS 0.70  
9168.01ft: MUD WEIGHT 10.65  
9168.01ft: MUD VIS 0.61  
9168.01ft: MUD WEIGHT 10.70  
9168.01ft: ZERO ALL PUMPS from  
SideKick sk-05-05-1268  
9168.01ft: MUD VIS 0.60  
9168.01ft: MUD WEIGHT 10.70  
9168.01ft: PVT Horn Enabled  
9168.01ft: MUD VIS 0.58  
9168.01ft: MUD WEIGHT 11.00  
9168.01ft: MUD VIS 0.53  
9168.01ft: MUD WEIGHT 10.80  
9168.01ft: 021TGAS 03090394  
SW0.27 HW25.00 - 184 days on  
9168.01ft: BIT DEPTH CHANGED TO  
1830.0 FEET  
9168.01ft: ZERO ALL PUMPS from  
SideKick sk-06-03-3103  
9168.01ft: MUD VIS 0.48  
9168.01ft: MUD WEIGHT 10.70