

Well Name: **RBF 23-15D**

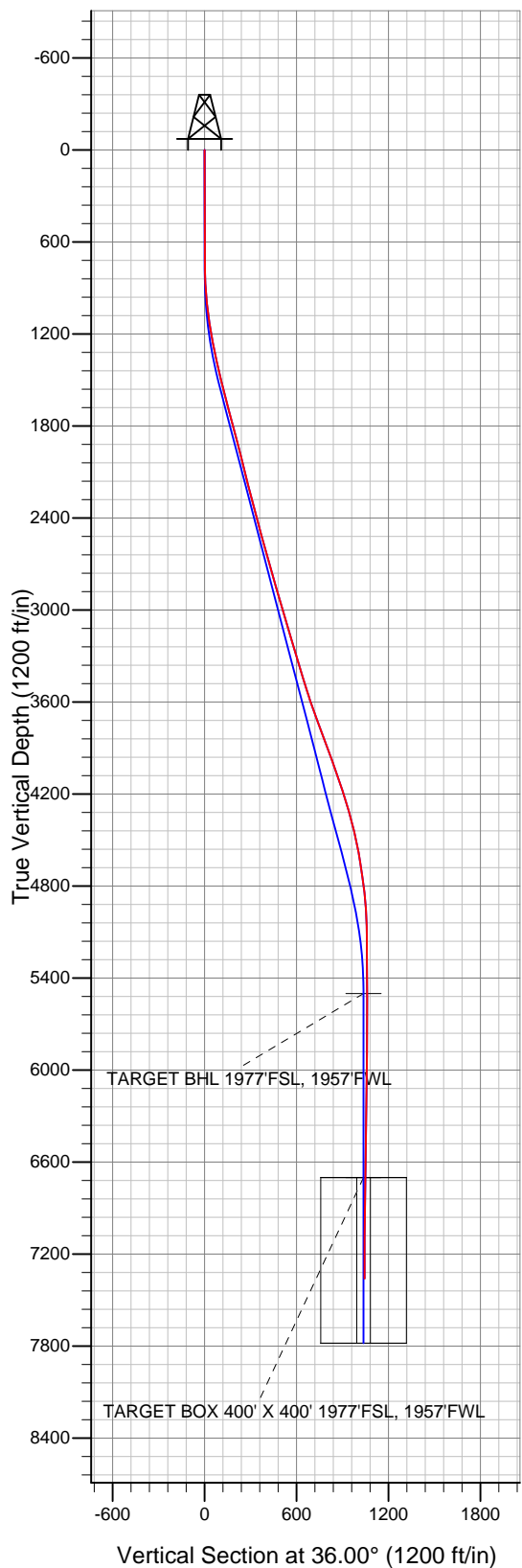
Surface Location: RBF 24-15D Pad Sec.15-T6N-R67W
North American Datum 1983 US State Plane 1983 Colorado Northern Zone

Ground Elevation: 4781.0

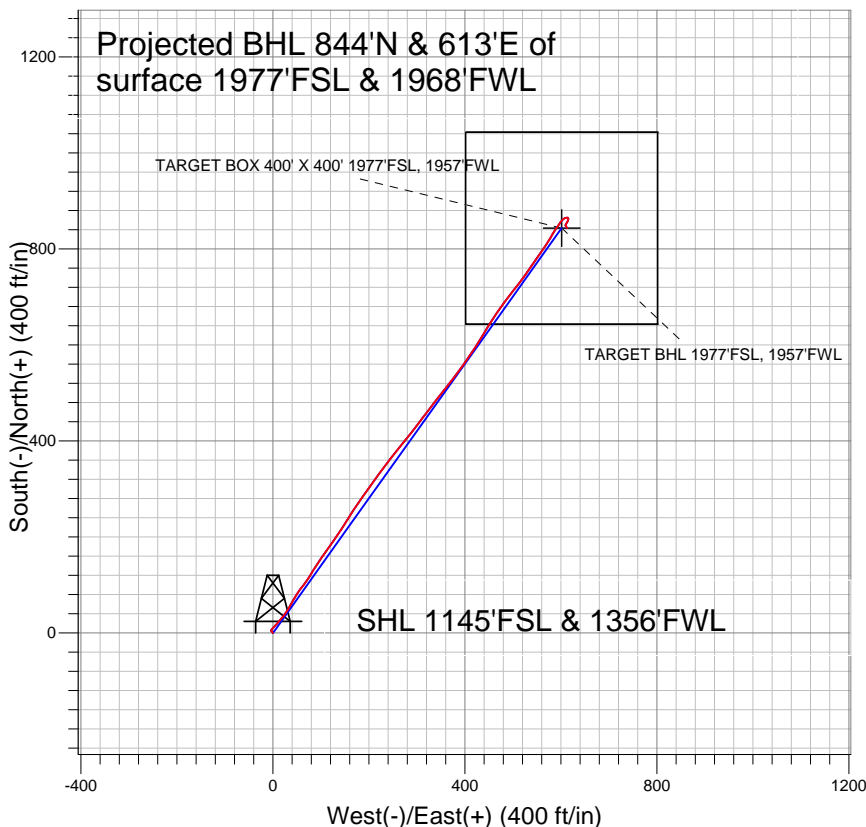
+N/-S	+E/-W	Northing	Easting	Latitude	Longitude
0.0	0.0	1419315.31	3171308.65	40° 28' 58.040 N	104° 53' 2.954 W

Original Well Elev WELL @ 4794.0ft (Original Well Elev)

Slot



Synergy Resources



LEGEND

- + RBF 23-15D, Wellbore #1, Plan #2 (8-31-10) V0
- Wellbore #1
- Survey #1

Final Survey Plot

Projected Final Survey -
7503'MD & 7360'TVD @ 1043' VS
0.7 deg Inc 138.8 deg AZ

Project: SEC.15-T6N-R67W
Site: RBF 24-15D Pad Sec.15-T6N-R67W
Well: RBF 23-15D
Plan: Wellbore #1



Directional

Synergy Resources

SEC.15-T6N-R67W

RBF 24-15D Pad Sec.15-T6N-R67W

RBF 23-15D

Wellbore #1

Survey: Survey #1

Standard Survey Report

08 November, 2010

Survey	Survey Data									
	Measured Depth (ft)	Inclination (°)	Azimuth (°)	Vertical Depth (ft)	+N/-S (ft)	+E/-W (ft)	Vertical Section (ft)	Dogleg Rate (°/100ft)	Build Rate (°/100ft)	Turn Rate (°/100ft)
	0.0	0.00	0.00	0.0	0.0	0.0	0.0	0.00	0.00	0.00
	619.0	0.70	318.50	619.0	2.8	-2.5	0.8	0.11	0.11	0.00
	713.0	0.90	303.40	713.0	3.7	-3.5	0.9	0.31	0.21	-16.06
	806.0	1.20	14.50	806.0	5.0	-3.9	1.8	1.34	0.32	76.45
	900.0	3.60	40.30	899.9	8.2	-1.7	5.6	2.74	2.55	27.45
	994.0	6.00	44.80	993.5	14.0	3.7	13.4	2.58	2.55	4.79
	1,088.0	8.00	38.90	1,086.8	22.5	11.2	24.8	2.26	2.13	-6.28
	1,181.0	9.80	40.10	1,178.7	33.6	20.4	39.2	1.95	1.94	1.29
	1,275.0	11.30	32.90	1,271.1	47.5	30.5	56.4	2.12	1.60	-7.66
	1,368.0	12.20	27.40	1,362.2	63.9	40.0	75.2	1.54	0.97	-5.91
	1,461.0	13.20	34.00	1,452.9	81.4	50.5	95.5	1.89	1.08	7.10
	1,555.0	13.80	37.70	1,544.3	99.1	63.3	117.4	1.12	0.64	3.94
	1,649.0	15.00	33.40	1,635.4	118.2	76.9	140.8	1.71	1.28	-4.57

Company:	Synergy Resources	Local Co-ordinate Reference:	Well RBF 23-15D
Project:	SEC.15-T6N-R67W	TVD Reference:	WELL @ 4794.0ft (Original Well Elev)
Site:	RBF 24-15D Pad Sec.15-T6N-R67W	MD Reference:	WELL @ 4794.0ft (Original Well Elev)
Well:	RBF 23-15D	North Reference:	True
Wellbore:	Wellbore #1	Survey Calculation Method:	Minimum Curvature
Design:	Wellbore #1	Database:	Landmark

Survey

Measured Depth (ft)	Inclination (°)	Azimuth (°)	Vertical Depth (ft)	+N/-S (ft)	+E/-W (ft)	Vertical Section (ft)	Dogleg Rate (°/100ft)	Build Rate (°/100ft)	Turn Rate (°/100ft)
1,742.0	15.00	32.50	1,725.2	138.4	90.0	164.8	0.25	0.00	-0.97
1,836.0	14.50	32.10	1,816.1	158.6	102.8	188.7	0.54	-0.53	-0.43
1,930.0	15.10	36.20	1,907.0	178.5	116.3	212.7	1.28	0.64	4.36
2,034.0	14.30	36.00	2,007.6	199.8	131.8	239.1	0.77	-0.77	-0.19
2,118.0	14.00	31.90	2,089.0	216.8	143.3	259.6	1.25	-0.36	-4.88
2,212.0	14.00	31.10	2,180.2	236.2	155.2	282.3	0.21	0.00	-0.85
2,306.0	14.20	33.40	2,271.4	255.5	167.4	305.1	0.63	0.21	2.45
2,399.0	14.20	35.70	2,361.6	274.3	180.3	327.9	0.61	0.00	2.47
2,493.0	15.70	35.30	2,452.4	294.1	194.4	352.2	1.60	1.60	-0.43
2,587.0	16.80	35.90	2,542.6	315.5	209.7	378.5	1.18	1.17	0.64
2,680.0	15.70	36.10	2,631.9	336.5	225.0	404.5	1.18	-1.18	0.22
2,774.0	15.30	37.00	2,722.5	356.7	240.0	429.6	0.50	-0.43	0.96
2,868.0	16.30	39.40	2,812.9	376.8	255.8	455.2	1.27	1.06	2.55
2,961.0	16.40	39.10	2,902.2	397.1	272.4	481.3	0.14	0.11	-0.32
3,055.0	15.10	38.80	2,992.6	416.9	288.4	506.8	1.39	-1.38	-0.32
3,149.0	15.90	35.60	3,083.2	436.9	303.6	531.9	1.25	0.85	-3.40
3,242.0	17.20	37.30	3,172.4	458.2	319.3	558.4	1.49	1.40	1.83
3,336.0	16.70	38.30	3,262.3	479.9	336.1	585.8	0.62	-0.53	1.06
3,430.0	17.30	38.40	3,352.2	501.4	353.2	613.2	0.64	0.64	0.11
3,524.0	17.10	37.70	3,442.0	523.3	370.3	641.0	0.31	-0.21	-0.74
3,618.0	17.20	36.90	3,531.8	545.4	387.1	668.7	0.27	0.11	-0.85
3,712.0	19.70	34.70	3,621.0	569.5	404.5	698.5	2.76	2.66	-2.34
3,805.0	20.40	32.70	3,708.3	596.0	422.1	730.3	1.05	0.75	-2.15
3,899.0	20.60	31.70	3,796.4	623.9	439.7	763.2	0.43	0.21	-1.06
3,993.0	19.90	31.90	3,884.6	651.5	456.8	795.6	0.75	-0.74	0.21
4,086.0	19.40	35.00	3,972.1	677.6	474.0	826.9	1.24	-0.54	3.33
4,180.0	19.90	38.80	4,060.7	702.9	493.0	858.4	1.46	0.53	4.04
4,274.0	19.00	37.00	4,149.3	727.6	512.3	889.7	1.15	-0.96	-1.91
4,367.0	16.80	34.80	4,237.8	750.7	529.0	918.3	2.47	-2.37	-2.37
4,461.0	16.20	35.00	4,327.9	772.6	544.3	945.0	0.64	-0.64	0.21
4,554.0	13.70	35.00	4,417.8	792.3	558.1	969.0	2.69	-2.69	0.00
4,648.0	11.40	33.10	4,509.5	809.2	569.5	989.4	2.49	-2.45	-2.02
4,742.0	9.90	31.30	4,601.9	823.8	578.8	1,006.7	1.63	-1.60	-1.91
4,837.0	8.80	29.70	4,695.6	837.1	586.7	1,022.1	1.19	-1.16	-1.68
4,930.0	7.50	37.00	4,787.7	848.2	593.8	1,035.2	1.78	-1.40	7.85
5,024.0	5.70	35.20	4,881.1	856.9	600.2	1,046.0	1.93	-1.91	-1.91
5,118.0	3.10	55.00	4,974.8	862.2	605.0	1,053.1	3.16	-2.77	21.06
5,212.0	1.20	73.20	5,068.7	863.9	608.0	1,056.3	2.12	-2.02	19.36
5,368.0	0.60	83.80	5,224.7	864.5	610.4	1,058.1	0.40	-0.38	6.79
5,524.0	0.90	77.40	5,380.7	864.8	612.4	1,059.6	0.20	0.19	-4.10
5,643.2	0.71	105.37	5,499.9	864.8	614.0	1,060.6	0.36	-0.16	23.46
TARGET BHL 1977'FSL, 1957'FWL									
5,680.0	0.70	116.10	5,536.7	864.7	614.4	1,060.7	0.36	-0.04	29.16
5,837.0	0.70	187.10	5,693.7	863.3	615.2	1,060.0	0.52	0.00	45.22
5,994.0	0.60	180.40	5,850.7	861.5	615.1	1,058.5	0.08	-0.06	-4.27
6,150.0	0.70	194.70	6,006.6	859.8	614.8	1,057.0	0.12	0.06	9.17
6,306.0	0.50	199.00	6,162.6	858.2	614.4	1,055.4	0.13	-0.13	2.76
6,462.0	0.70	217.70	6,318.6	856.8	613.6	1,053.8	0.18	0.13	11.99
6,618.0	0.70	198.40	6,474.6	855.2	612.7	1,051.9	0.15	0.00	-12.37
6,774.0	1.00	215.30	6,630.6	853.1	611.6	1,049.7	0.25	0.19	10.83
6,843.6	1.04	216.65	6,700.2	852.1	610.9	1,048.4	0.07	0.06	1.95
TARGET BOX 400' X 400' 1977'FSL, 1957'FWL									
6,931.0	1.10	218.20	6,787.6	850.8	609.9	1,046.8	0.07	0.06	1.77
7,087.0	0.90	151.20	6,943.6	848.6	609.5	1,044.8	0.72	-0.13	-42.95

Company:	Synergy Resources	Local Co-ordinate Reference:	Well RBF 23-15D
Project:	SEC.15-T6N-R67W	TVD Reference:	WELL @ 4794.0ft (Original Well Elev)
Site:	RBF 24-15D Pad Sec.15-T6N-R67W	MD Reference:	WELL @ 4794.0ft (Original Well Elev)
Well:	RBF 23-15D	North Reference:	True
Wellbore:	Wellbore #1	Survey Calculation Method:	Minimum Curvature
Design:	Wellbore #1	Database:	Landmark

Survey									
Measured Depth (ft)	Inclination (°)	Azimuth (°)	Vertical Depth (ft)	+N/-S (ft)	+E/-W (ft)	Vertical Section (ft)	Dogleg Rate (°/100ft)	Build Rate (°/100ft)	Turn Rate (°/100ft)
7,243.0	1.00	152.30	7,099.5	846.3	610.7	1,043.7	0.07	0.06	0.71
7,400.0	0.70	119.30	7,256.5	844.6	612.2	1,043.2	0.36	-0.19	-21.02
7,459.0	0.70	138.80	7,315.5	844.2	612.8	1,043.1	0.40	0.00	33.05
7,503.0	0.70	138.80	7,359.5	843.8	613.1	1,043.0	0.00	0.00	0.00

Checked By: _____	Approved By: _____	Date: _____
-------------------	--------------------	-------------