

# PETROLEUM DEVELOPMENT CORP Weld County CO

Well Name: **Rotharmel 11-32H**

Surface Location: Rotharmel 11-32H Pad Sec.32-T7N-R66W  
North American Datum 1983 , US State Plane 1983 , Colorado Northern Zone

Ground Elevation: 4872.0

+N/-S	+E/-W	Northing	Easting	Latitude	Longitude	Slot
0.0	0.0	1438435.75	3191234.78	40.534870	-104.811990	

Original Well Elev WELL @ 4887.0ft (Original Well Elev)

## WELLBORE TARGET DETAILS

Name	TVD	+N/-S	+E/-W	Shape
HARDLINE BHL 460'FEL	1.0	-428.7	4687.6	Polygon
HARDLINE SHL 460'FWL	1.0	-400.0	245.0	Polygon
TARGET BHL 1320'FNL & 500'FEL	7167.0	-28.7	4647.6	Point



Azimuths to True North  
Magnetic North: 8.87°

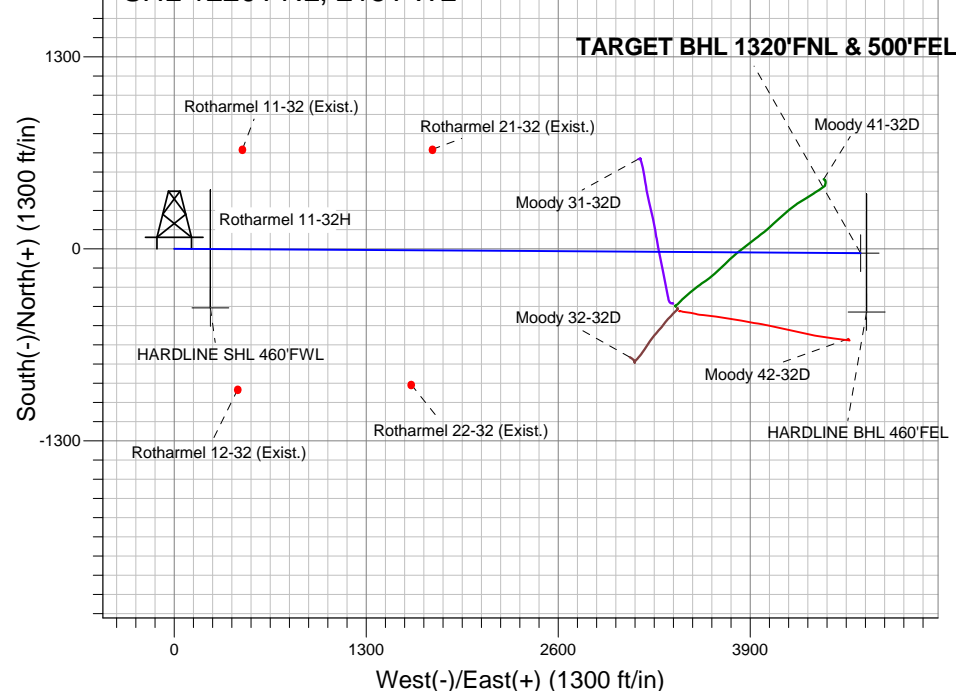
Magnetic Field  
Strength: 53170.5snT  
Dip Angle: 67.14°  
Date: 9/13/2011  
Model: IGRF2010

## ANNOTATIONS

TVD	MD	Annotation
6428.1	6428.1	KOP
7192.0	7633.1	End of Build

Rotharmel 11-32H Pad Sec.32-T7N-R66W  
Rotharmel 11-32H  
Plan #1 (9-13-11)  
13:11, September 14 2011

SHL 1220'FNL, 215'FWL



## SECTION DETAILS

Sec	MD	Inc	Azi	TVD	+N/-S	+E/-W	DLeg	TFace	VSec	Target
1	0.0	0.00	0.00	0.0	0.0	0.0	0.00	0.00	0.0	
2	6428.1	0.00	0.00	6428.1	0.0	0.0	0.00	0.00	0.0	
3	7633.1	90.37	90.35	7192.0	-4.7	768.9	7.50	90.35	768.9	
4	11511.9	90.37	90.35	7167.0	-28.7	4647.6	0.00	0.00	4647.7	TARGET BHL 1320'FNL & 500'FEL

