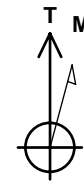
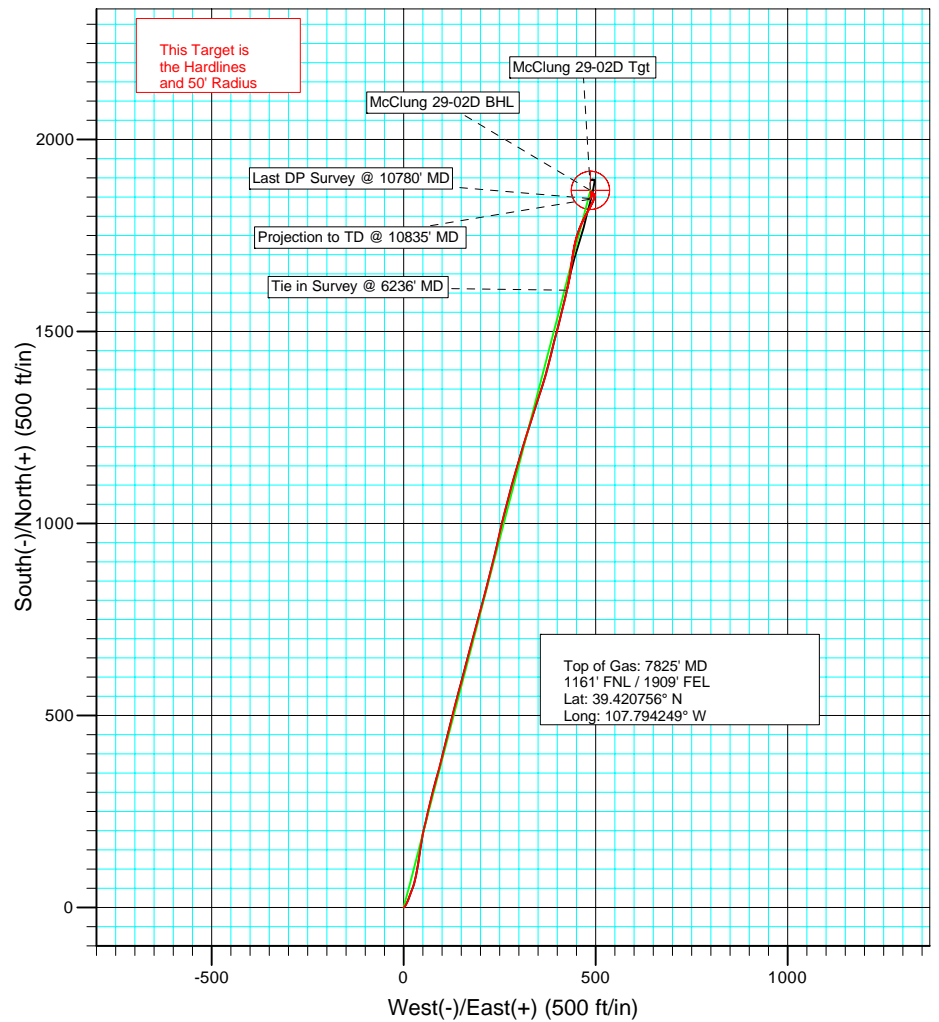
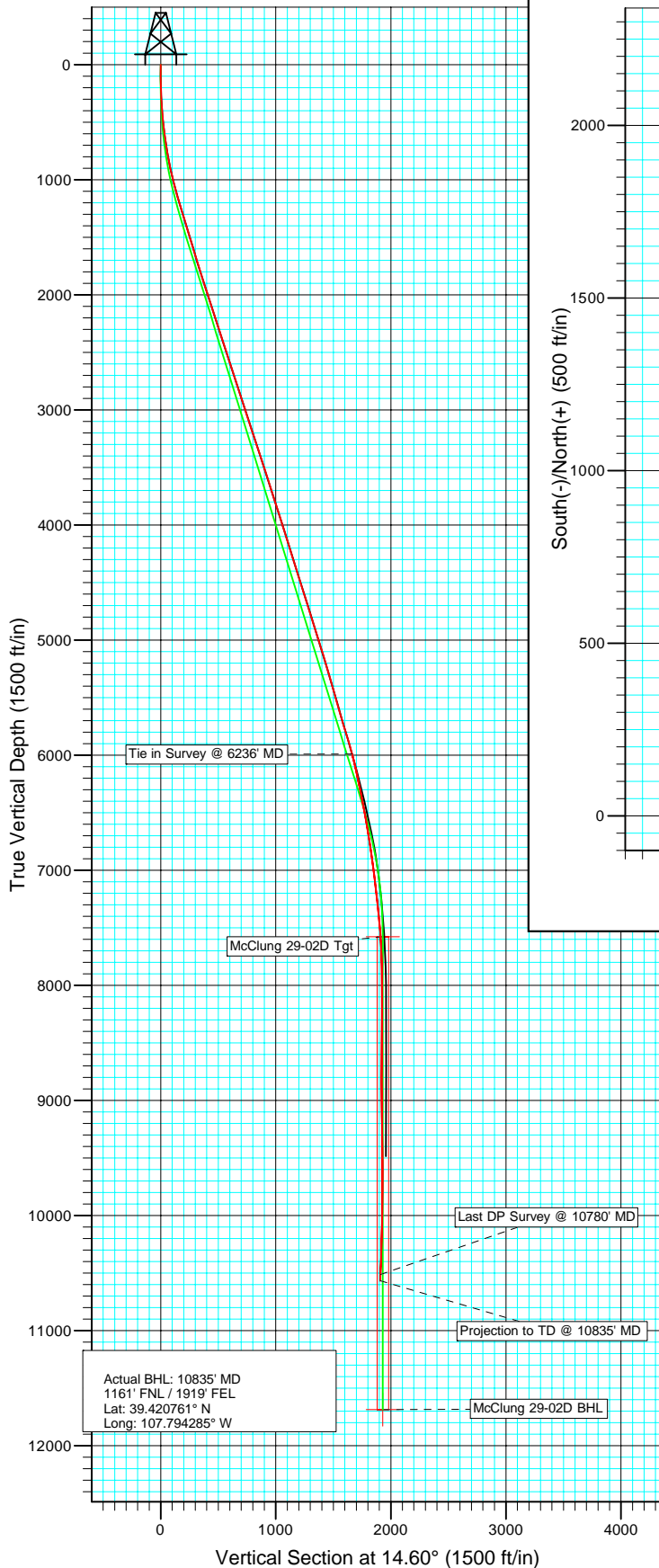




Project: Helmer Gulch  
Site: NWSE Sec 29-T7S-R93W  
Well: McClung 29-02D  
Wellbore: STK 1  
Design: STK 1



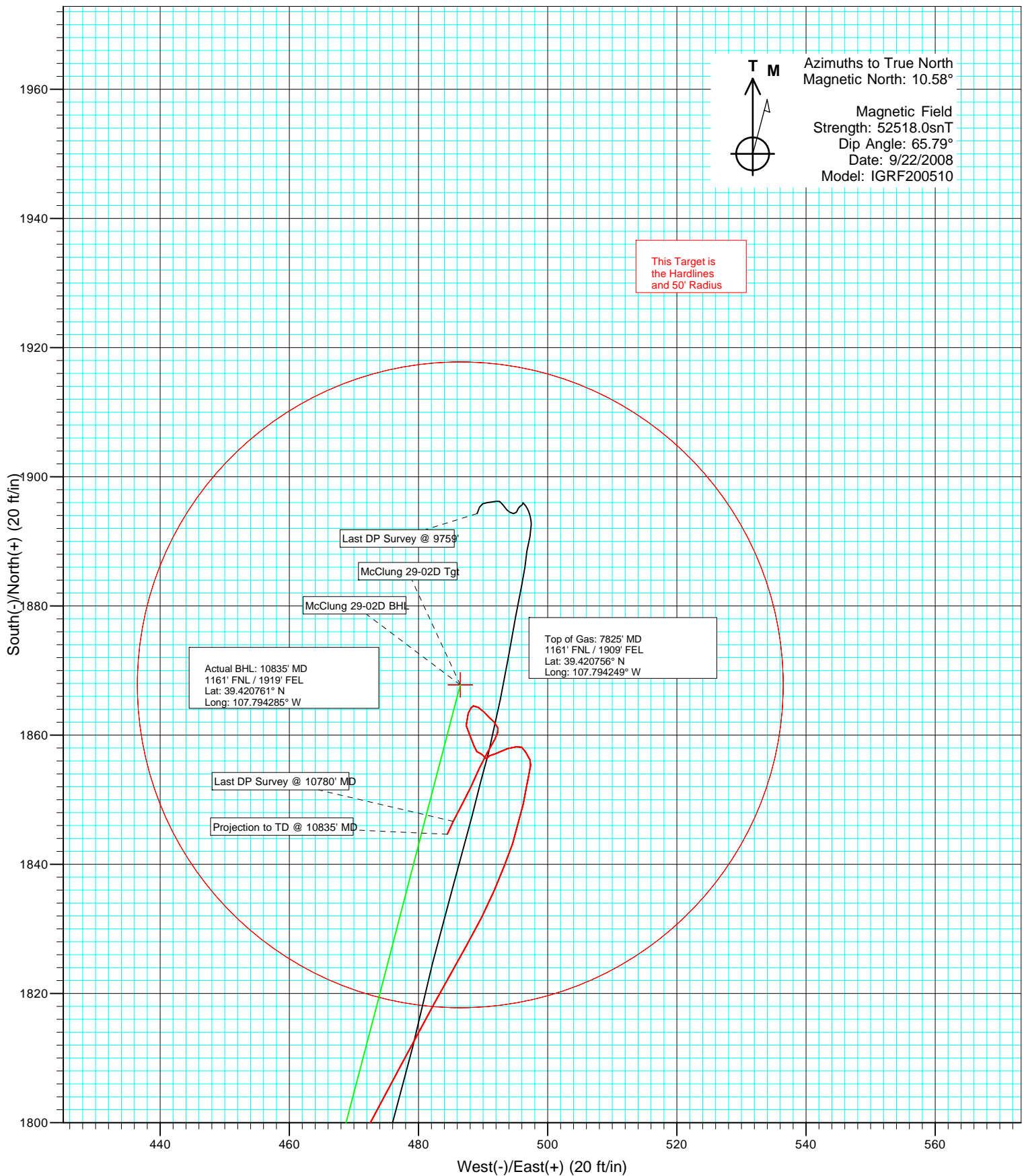
Azimuths to True North  
Magnetic North: 10.58°

Magnetic Field  
Strength: 52518.0snT  
Dip Angle: 65.79°  
Date: 9/22/2008  
Model: IGRF200510

DESIGN DETAILS: STK 1

McClung 29-02D KBE @ 7697.0ft (Grey Wolf 831)

Target	Azimuth	Origin Type	N/S	E/W	TVD
Target McClung 29-02D BHL	14.60	Spot	0.0	0.0	0.0



## Survey Report

<b>Company:</b>	Laramie Energy II, LLC.	<b>Local Co-ordinate Reference:</b>	Well McClung 29-02D
<b>Project:</b>	Helmer Gulch	<b>TVD Reference:</b>	McClung 29-02D KBE @ 7697.0ft (Grey Wolf 831)
<b>Site:</b>	NWSE Sec 29-T7S-R93W	<b>MD Reference:</b>	McClung 29-02D KBE @ 7697.0ft (Grey Wolf 831)
<b>Well:</b>	McClung 29-02D	<b>North Reference:</b>	True
<b>Wellbore:</b>	STK 1	<b>Survey Calculation Method:</b>	Minimum Curvature
<b>Design:</b>	STK 1	<b>Database:</b>	EDM 2003.21 US Multi User DB

<b>Project</b>	Helmer Gulch		
<b>Map System:</b>	US State Plane 1983	<b>System Datum:</b>	Mean Sea Level
<b>Geo Datum:</b>	North American Datum 1983		
<b>Map Zone:</b>	Colorado Central Zone		

<b>Site</b>	NWSE Sec 29-T7S-R93W			
<b>Site Position:</b>		<b>Northing:</b>	1,584,519.83 ft	<b>Latitude:</b> 39.415765
<b>From:</b>	Lat/Long	<b>Easting:</b>	2,351,367.10 ft	<b>Longitude:</b> -107.796110
<b>Position Uncertainty:</b>	0.0 ft	<b>Slot Radius:</b>	"	<b>Grid Convergence:</b> -1.45 °

<b>Well</b>	McClung 29-02D			
<b>Well Position</b>	<b>+N/-S</b>	0.0 ft	<b>Northing:</b>	1,584,493.91 ft
	<b>+E/-W</b>	0.0 ft	<b>Easting:</b>	2,351,397.53 ft
<b>Position Uncertainty</b>		0.0 ft	<b>Wellhead Elevation:</b>	ft
			<b>Ground Level:</b>	7,676.0 ft

<b>Wellbore</b>	STK 1				
<b>Magnetics</b>	<b>Model Name</b>	<b>Sample Date</b>	<b>Declination (°)</b>	<b>Dip Angle (°)</b>	<b>Field Strength (nT)</b>
	IGRF200510	9/22/2008	10.58	65.79	52,518

<b>Design</b>	STK 1				
<b>Audit Notes:</b>					
<b>Version:</b>	1.0	<b>Phase:</b>	ACTUAL	<b>Tie On Depth:</b>	6,236.0
<b>Vertical Section:</b>	<b>Depth From (TVD)</b>	<b>+N/-S</b>	<b>+E/-W</b>	<b>Direction</b>	
	(ft)	(ft)	(ft)	(°)	
	0.0	0.0	0.0	14.60	

<b>Survey Program</b>	<b>Date</b>	10/2/2008			
<b>From (ft)</b>	<b>To (ft)</b>	<b>Survey (Wellbore)</b>	<b>Tool Name</b>	<b>Description</b>	
97.0	6,236.0	Survey #1 (DD)	Geolink MWD	Geolink MWD	
6,266.0	10,835.0	Survey #1 (STK 1)	Geolink MWD	Geolink MWD	

<b>Survey</b>										
<b>Measured Depth (ft)</b>	<b>Inclination (°)</b>	<b>Azimuth (°)</b>	<b>Vertical Depth (ft)</b>	<b>+N/-S (ft)</b>	<b>+E/-W (ft)</b>	<b>Vertical Section (ft)</b>	<b>Dogleg Rate (°/100ft)</b>	<b>Build Rate (°/100ft)</b>	<b>Formations / Comments</b>	
6,236.0	15.00	12.50	5,989.5	1,607.7	425.3	1,662.9	0.00	0.00	<b>Tie in Survey @ 6236' MD</b>	
6,266.0	15.10	11.90	6,018.5	1,615.3	426.9	1,670.7	0.62	0.33		
6,362.0	12.10	9.10	6,111.8	1,637.4	431.1	1,693.2	3.20	-3.13		
6,457.0	11.90	9.10	6,204.7	1,656.9	434.2	1,712.9	0.21	-0.21		
6,552.0	11.60	8.20	6,297.7	1,676.1	437.1	1,732.1	0.37	-0.32		
6,616.0	11.60	8.00	6,360.4	1,688.8	438.9	1,744.9	0.06	0.00		
6,679.0	11.30	6.80	6,422.2	1,701.2	440.5	1,757.3	0.61	-0.48		
6,775.0	9.70	11.40	6,516.6	1,718.5	443.3	1,774.7	1.88	-1.67		
6,870.0	9.70	16.60	6,610.2	1,734.0	447.1	1,790.7	0.92	0.00		
6,966.0	9.10	14.40	6,704.9	1,749.1	451.3	1,806.4	0.73	-0.62		
7,061.0	9.00	22.20	6,798.7	1,763.3	456.0	1,821.3	1.29	-0.11		
7,157.0	8.30	21.10	6,893.6	1,776.7	461.3	1,835.6	0.75	-0.73		

## Survey Report

<b>Company:</b>	Laramie Energy II, LLC.	<b>Local Co-ordinate Reference:</b>	Well McClung 29-02D
<b>Project:</b>	Helmer Gulch	<b>TVD Reference:</b>	McClung 29-02D KBE @ 7697.0ft (Grey Wolf 831)
<b>Site:</b>	NWSE Sec 29-T7S-R93W	<b>MD Reference:</b>	McClung 29-02D KBE @ 7697.0ft (Grey Wolf 831)
<b>Well:</b>	McClung 29-02D	<b>North Reference:</b>	True
<b>Wellbore:</b>	STK 1	<b>Survey Calculation Method:</b>	Minimum Curvature
<b>Design:</b>	STK 1	<b>Database:</b>	EDM 2003.21 US Multi User DB

### Survey

Measured Depth (ft)	Inclination (°)	Azimuth (°)	Vertical Depth (ft)	+N/-S (ft)	+E/-W (ft)	Vertical Section (ft)	Dogleg Rate (°/100ft)	Build Rate (°/100ft)	Formations / Comments
7,252.0	7.30	27.00	6,987.8	1,788.4	466.5	1,848.3	1.35	-1.05	
7,347.0	7.00	28.00	7,082.0	1,798.9	472.0	1,859.8	0.34	-0.32	
7,443.0	6.50	28.00	7,177.4	1,808.9	477.3	1,870.8	0.52	-0.52	
7,538.0	6.50	28.50	7,271.7	1,818.4	482.4	1,881.2	0.06	0.00	
7,634.0	6.10	29.80	7,367.2	1,827.6	487.5	1,891.4	0.44	-0.42	
7,729.0	5.20	23.00	7,461.7	1,835.9	491.7	1,900.6	1.18	-0.95	
7,825.0	4.10	19.70	7,557.4	1,843.2	494.6	1,908.3	1.18	-1.15	
7,920.0	3.60	9.90	7,652.2	1,849.3	496.2	1,914.7	0.87	-0.53	
8,016.0	2.10	12.70	7,748.1	1,854.0	497.1	1,919.4	1.57	-1.56	
8,111.0	0.70	334.40	7,843.0	1,856.2	497.3	1,921.6	1.69	-1.47	
8,207.0	0.90	328.10	7,939.0	1,857.4	496.6	1,922.6	0.23	0.21	
8,302.0	0.30	301.40	8,034.0	1,858.1	496.0	1,923.2	0.68	-0.63	
8,397.0	0.80	265.10	8,129.0	1,858.2	495.1	1,923.0	0.62	0.53	
8,493.0	0.80	251.90	8,225.0	1,857.9	493.8	1,922.4	0.19	0.00	
8,587.0	1.00	243.90	8,319.0	1,857.4	492.5	1,921.5	0.25	0.21	
8,619.0	0.90	248.70	8,351.0	1,857.2	492.0	1,921.2	0.40	-0.31	
8,714.0	0.30	258.30	8,446.0	1,856.8	491.0	1,920.6	0.64	-0.63	
8,809.0	0.30	197.40	8,541.0	1,856.5	490.7	1,920.3	0.32	0.00	
8,905.0	0.20	301.60	8,637.0	1,856.4	490.5	1,920.1	0.42	-0.10	
9,001.0	0.20	314.10	8,733.0	1,856.6	490.2	1,920.2	0.05	0.00	
9,097.0	0.20	326.00	8,829.0	1,856.9	490.0	1,920.4	0.04	0.00	
9,194.0	0.40	296.50	8,926.0	1,857.1	489.6	1,920.6	0.25	0.21	
9,290.0	0.40	299.40	9,022.0	1,857.5	489.0	1,920.7	0.02	0.00	
9,385.0	0.90	349.10	9,117.0	1,858.4	488.6	1,921.5	0.75	0.53	
9,481.0	1.10	329.00	9,212.9	1,859.9	488.0	1,922.8	0.42	0.21	
9,576.0	1.00	352.00	9,307.9	1,861.5	487.4	1,924.2	0.45	-0.11	
9,672.0	1.40	21.80	9,403.9	1,863.4	487.7	1,926.2	0.76	0.42	
9,768.0	0.40	82.70	9,499.9	1,864.5	488.5	1,927.5	1.31	-1.04	
9,864.0	0.60	122.60	9,595.9	1,864.3	489.2	1,927.4	0.41	0.21	
9,959.0	0.80	133.70	9,690.9	1,863.6	490.1	1,927.0	0.25	0.21	
10,055.0	0.60	140.50	9,786.9	1,862.7	490.9	1,926.3	0.23	-0.21	
10,151.0	0.70	125.60	9,882.9	1,862.0	491.7	1,925.8	0.20	0.10	
10,246.0	0.70	170.60	9,977.9	1,861.1	492.3	1,925.1	0.56	0.00	
10,342.0	1.50	207.00	10,073.9	1,859.4	491.8	1,923.3	1.07	0.83	
10,438.0	1.50	211.00	10,169.8	1,857.2	490.6	1,920.9	0.11	0.00	
10,533.0	1.70	203.90	10,264.8	1,854.8	489.4	1,918.3	0.30	0.21	
10,629.0	2.20	205.00	10,360.7	1,851.9	488.0	1,915.1	0.52	0.52	
10,725.0	2.20	208.70	10,456.7	1,848.6	486.4	1,911.5	0.15	0.00	
10,780.0	2.30	205.70	10,511.6	1,846.7	485.4	1,909.4	0.28	0.18	Last DP Survey @ 10780' MD
10,835.0	2.30	205.70	10,566.6	1,844.7	484.4	1,907.2	0.00	0.00	Projection to TD @ 10835' MD

## Survey Report

<b>Company:</b>	Laramie Energy II, LLC.	<b>Local Co-ordinate Reference:</b>	Well McClung 29-02D
<b>Project:</b>	Helmer Gulch	<b>TVD Reference:</b>	McClung 29-02D KBE @ 7697.0ft (Grey Wolf 831)
<b>Site:</b>	NWSE Sec 29-T7S-R93W	<b>MD Reference:</b>	McClung 29-02D KBE @ 7697.0ft (Grey Wolf 831)
<b>Well:</b>	McClung 29-02D	<b>North Reference:</b>	True
<b>Wellbore:</b>	STK 1	<b>Survey Calculation Method:</b>	Minimum Curvature
<b>Design:</b>	STK 1	<b>Database:</b>	EDM 2003.21 US Multi User DB

Targets									
Target Name	Dip Angle	Dip Dir.	TVD	+N/-S	+E/-W	Northing	Easting	Latitude	Longitude
- hit/miss target	(°)	(°)	(ft)	(ft)	(ft)	(ft)	(ft)		
- Shape									
McClung 29-02D BHL	0.00	0.00	11,686.0	1,867.8	486.5	1,586,348.82	2,351,931.05	39.420824	-107.794278
- survey misses target center by 1119.7ft at 10835.0ft MD (10566.6 TVD, 1844.7 N, 484.4 E)									
- Circle (radius 50.0)									
McClung 29-02D Tgt	0.00	0.00	7,578.0	1,867.8	486.5	1,586,348.82	2,351,931.05	39.420824	-107.794278
- survey misses target center by 24.8ft at 7847.0ft MD (7579.4 TVD, 1844.6 N, 495.1 E)									
- Point									

Survey Annotations				
Measured Depth	Vertical Depth	Local Coordinates		Comment
(ft)	(ft)	+N/-S (ft)	+E/-W (ft)	
6,236.0	5,989.5	1,607.7	425.3	Tie in Survey @ 6236' MD
10,780.0	10,511.6	1,846.7	485.4	Last DP Survey @ 10780' MD
10,835.0	10,566.6	1,844.7	484.4	Projection to TD @ 10835' MD

Checked By: \_\_\_\_\_ Approved By: \_\_\_\_\_ Date: \_\_\_\_\_

## Survey Report - Geographic

<b>Company:</b>	Laramie Energy II, LLC.	<b>Local Co-ordinate Reference:</b>	Well McClung 29-02D
<b>Project:</b>	Helmer Gulch	<b>TVD Reference:</b>	McClung 29-02D KBE @ 7697.0ft (Grey Wolf 831)
<b>Site:</b>	NWSE Sec 29-T7S-R93W	<b>MD Reference:</b>	McClung 29-02D KBE @ 7697.0ft (Grey Wolf 831)
<b>Well:</b>	McClung 29-02D	<b>North Reference:</b>	True
<b>Wellbore:</b>	STK 1	<b>Survey Calculation Method:</b>	Minimum Curvature
<b>Design:</b>	STK 1	<b>Database:</b>	EDM 2003.21 US Multi User DB

<b>Project</b>	Helmer Gulch		
<b>Map System:</b>	US State Plane 1983	<b>System Datum:</b>	Mean Sea Level
<b>Geo Datum:</b>	North American Datum 1983		
<b>Map Zone:</b>	Colorado Central Zone		

<b>Site</b>	NWSE Sec 29-T7S-R93W			
<b>Site Position:</b>		<b>Northing:</b>	1,584,519.83 ft	<b>Latitude:</b> 39.415765
<b>From:</b>	Lat/Long	<b>Easting:</b>	2,351,367.10 ft	<b>Longitude:</b> -107.796110
<b>Position Uncertainty:</b>	0.0 ft	<b>Slot Radius:</b>	"	<b>Grid Convergence:</b> -1.45 °

<b>Well</b>	McClung 29-02D			
<b>Well Position</b>	<b>+N/-S</b>	0.0 ft	<b>Northing:</b>	1,584,493.91 ft
	<b>+E/-W</b>	0.0 ft	<b>Easting:</b>	2,351,397.53 ft
<b>Position Uncertainty</b>		0.0 ft	<b>Wellhead Elevation:</b>	ft
			<b>Ground Level:</b>	7,676.0 ft

<b>Wellbore</b>	STK 1				
<b>Magnetics</b>	<b>Model Name</b>	<b>Sample Date</b>	<b>Declination (°)</b>	<b>Dip Angle (°)</b>	<b>Field Strength (nT)</b>
	IGRF200510	9/22/2008	10.58	65.79	52,518

<b>Design</b>	STK 1				
<b>Audit Notes:</b>					
<b>Version:</b>	1.0	<b>Phase:</b>	ACTUAL	<b>Tie On Depth:</b>	6,236.0
<b>Vertical Section:</b>	<b>Depth From (TVD) (ft)</b>	<b>+N/-S (ft)</b>	<b>+E/-W (ft)</b>	<b>Direction (°)</b>	
	0.0	0.0	0.0	14.60	

<b>Survey Program</b>	<b>Date</b>	10/2/2008			
<b>From (ft)</b>	<b>To (ft)</b>	<b>Survey (Wellbore)</b>	<b>Tool Name</b>	<b>Description</b>	
97.0	6,236.0	Survey #1 (DD)	Geolink MWD	Geolink MWD	
6,266.0	10,835.0	Survey #1 (STK 1)	Geolink MWD	Geolink MWD	

# Survey Report - Geographic

<b>Company:</b>	Laramie Energy II, LLC.	<b>Local Co-ordinate Reference:</b>	Well McClung 29-02D
<b>Project:</b>	Helmer Gulch	<b>TVD Reference:</b>	McClung 29-02D KBE @ 7697.0ft (Grey Wolf 831)
<b>Site:</b>	NWSE Sec 29-T7S-R93W	<b>MD Reference:</b>	McClung 29-02D KBE @ 7697.0ft (Grey Wolf 831)
<b>Well:</b>	McClung 29-02D	<b>North Reference:</b>	True
<b>Wellbore:</b>	STK 1	<b>Survey Calculation Method:</b>	Minimum Curvature
<b>Design:</b>	STK 1	<b>Database:</b>	EDM 2003.21 US Multi User DB

Survey									
Measured Depth (ft)	Inclination (°)	Azimuth (°)	Vertical Depth (ft)	+N/-S (ft)	+E/-W (ft)	Map Northing (ft)	Map Easting (ft)	Latitude	Longitude
6,236.0	15.00	12.50	5,989.5	1,607.7	425.3	1,586,090.30	2,351,863.29	39.420110	-107.794495
<b>Tie in Survey @ 6236' MD</b>									
6,266.0	15.10	11.90	6,018.5	1,615.3	426.9	1,586,097.87	2,351,865.13	39.420131	-107.794489
6,362.0	12.10	9.10	6,111.8	1,637.4	431.1	1,586,119.93	2,351,869.86	39.420192	-107.794474
6,457.0	11.90	9.10	6,204.7	1,656.9	434.2	1,586,139.35	2,351,873.47	39.420245	-107.794463
6,552.0	11.60	8.20	6,297.7	1,676.1	437.1	1,586,158.39	2,351,876.87	39.420298	-107.794453
6,616.0	11.60	8.00	6,360.4	1,688.8	438.9	1,586,171.08	2,351,879.00	39.420333	-107.794446
6,679.0	11.30	6.80	6,422.2	1,701.2	440.5	1,586,183.44	2,351,880.93	39.420367	-107.794441
6,775.0	9.70	11.40	6,516.6	1,718.5	443.3	1,586,200.64	2,351,884.07	39.420414	-107.794431
6,870.0	9.70	16.60	6,610.2	1,734.0	447.1	1,586,216.05	2,351,888.33	39.420457	-107.794417
6,966.0	9.10	14.40	6,704.9	1,749.1	451.3	1,586,231.04	2,351,892.91	39.420498	-107.794402
7,061.0	9.00	22.20	6,798.7	1,763.3	456.0	1,586,245.08	2,351,897.94	39.420537	-107.794386
7,157.0	8.30	21.10	6,893.6	1,776.7	461.3	1,586,258.35	2,351,903.61	39.420574	-107.794367
7,252.0	7.30	27.00	6,987.8	1,788.4	466.5	1,586,269.99	2,351,909.12	39.420606	-107.794349
7,347.0	7.00	28.00	7,082.0	1,798.9	472.0	1,586,280.34	2,351,914.84	39.420635	-107.794329
7,443.0	6.50	28.00	7,177.4	1,808.9	477.3	1,586,290.17	2,351,920.39	39.420662	-107.794310
7,538.0	6.50	28.50	7,271.7	1,818.4	482.4	1,586,299.51	2,351,925.71	39.420688	-107.794292
7,634.0	6.10	29.80	7,367.2	1,827.6	487.5	1,586,308.58	2,351,931.07	39.420714	-107.794274
7,729.0	5.20	23.00	7,461.7	1,835.9	491.7	1,586,316.81	2,351,935.47	39.420736	-107.794259
7,825.0	4.10	19.70	7,557.4	1,843.2	494.6	1,586,323.97	2,351,938.51	39.420756	-107.794249
7,920.0	3.60	9.90	7,652.2	1,849.3	496.2	1,586,330.07	2,351,940.32	39.420773	-107.794243
8,016.0	2.10	12.70	7,748.1	1,854.0	497.1	1,586,334.73	2,351,941.35	39.420786	-107.794240
8,111.0	0.70	334.40	7,843.0	1,856.2	497.3	1,586,336.94	2,351,941.53	39.420792	-107.794240
8,207.0	0.90	328.10	7,939.0	1,857.4	496.6	1,586,338.13	2,351,940.91	39.420795	-107.794242
8,302.0	0.30	301.40	8,034.0	1,858.1	496.0	1,586,338.91	2,351,940.33	39.420797	-107.794244
8,397.0	0.80	265.10	8,129.0	1,858.2	495.1	1,586,339.00	2,351,939.45	39.420798	-107.794247
8,493.0	0.80	251.90	8,225.0	1,857.9	493.8	1,586,338.77	2,351,938.14	39.420797	-107.794252
8,587.0	1.00	243.90	8,319.0	1,857.4	492.5	1,586,338.24	2,351,936.77	39.420795	-107.794257
8,619.0	0.90	248.70	8,351.0	1,857.2	492.0	1,586,338.04	2,351,936.28	39.420795	-107.794259
8,714.0	0.30	258.30	8,446.0	1,856.8	491.0	1,586,337.74	2,351,935.33	39.420794	-107.794262
8,809.0	0.30	197.40	8,541.0	1,856.5	490.7	1,586,337.46	2,351,935.01	39.420793	-107.794263
8,905.0	0.20	301.60	8,637.0	1,856.4	490.5	1,586,337.31	2,351,934.79	39.420793	-107.794264
9,001.0	0.20	314.10	8,733.0	1,856.6	490.2	1,586,337.52	2,351,934.53	39.420793	-107.794265
9,097.0	0.20	326.00	8,829.0	1,856.9	490.0	1,586,337.79	2,351,934.32	39.420794	-107.794265
9,194.0	0.40	296.50	8,926.0	1,857.1	489.6	1,586,338.09	2,351,933.93	39.420795	-107.794267
9,290.0	0.40	299.40	9,022.0	1,857.5	489.0	1,586,338.42	2,351,933.35	39.420796	-107.794269
9,385.0	0.90	349.10	9,117.0	1,858.4	488.6	1,586,339.32	2,351,932.94	39.420798	-107.794270
9,481.0	1.10	329.00	9,212.9	1,859.9	488.0	1,586,340.87	2,351,932.36	39.420802	-107.794273
9,576.0	1.00	352.00	9,307.9	1,861.5	487.4	1,586,342.48	2,351,931.82	39.420807	-107.794275
9,672.0	1.40	21.80	9,403.9	1,863.4	487.7	1,586,344.39	2,351,932.18	39.420812	-107.794274
9,768.0	0.40	82.70	9,499.9	1,864.5	488.5	1,586,345.51	2,351,932.98	39.420815	-107.794271
9,864.0	0.60	122.60	9,595.9	1,864.3	489.2	1,586,345.26	2,351,933.73	39.420814	-107.794268
9,959.0	0.80	133.70	9,690.9	1,863.6	490.1	1,586,344.51	2,351,934.61	39.420812	-107.794265
10,055.0	0.60	140.50	9,786.9	1,862.7	490.9	1,586,343.64	2,351,935.39	39.420810	-107.794262
10,151.0	0.70	125.60	9,882.9	1,862.0	491.7	1,586,342.89	2,351,936.17	39.420808	-107.794259
10,246.0	0.70	170.60	9,977.9	1,861.1	492.3	1,586,341.97	2,351,936.71	39.420806	-107.794257
10,342.0	1.50	207.00	10,073.9	1,859.4	491.8	1,586,340.28	2,351,936.20	39.420801	-107.794259
10,438.0	1.50	211.00	10,169.8	1,857.2	490.6	1,586,338.11	2,351,934.92	39.420795	-107.794263
10,533.0	1.70	203.90	10,264.8	1,854.8	489.4	1,586,335.79	2,351,933.65	39.420788	-107.794268
10,629.0	2.20	205.00	10,360.7	1,851.9	488.0	1,586,332.86	2,351,932.22	39.420780	-107.794272
10,725.0	2.20	208.70	10,456.7	1,848.6	486.4	1,586,329.61	2,351,930.48	39.420771	-107.794278
10,780.0	2.30	205.70	10,511.6	1,846.7	485.4	1,586,327.72	2,351,929.44	39.420766	-107.794282
<b>Last DP Survey @ 10780' MD</b>									
10,835.0	2.30	205.70	10,566.6	1,844.7	484.4	1,586,325.75	2,351,928.44	39.420761	-107.794285
<b>Projection to TD @ 10835' MD</b>									

## Survey Report - Geographic

<b>Company:</b>	Laramie Energy II, LLC.	<b>Local Co-ordinate Reference:</b>	Well McClung 29-02D
<b>Project:</b>	Helmer Gulch	<b>TVD Reference:</b>	McClung 29-02D KBE @ 7697.0ft (Grey Wolf 831)
<b>Site:</b>	NWSE Sec 29-T7S-R93W	<b>MD Reference:</b>	McClung 29-02D KBE @ 7697.0ft (Grey Wolf 831)
<b>Well:</b>	McClung 29-02D	<b>North Reference:</b>	True
<b>Wellbore:</b>	STK 1	<b>Survey Calculation Method:</b>	Minimum Curvature
<b>Design:</b>	STK 1	<b>Database:</b>	EDM 2003.21 US Multi User DB

Targets									
Target Name									
- hit/miss target	Dip Angle	Dip Dir.	TVD	+N/-S	+E/-W	Northing	Easting	Latitude	Longitude
- Shape	(°)	(°)	(ft)	(ft)	(ft)	(ft)	(ft)		
McClung 29-02D BHL	0.00	0.00	11,686.0	1,867.8	486.5	1,586,348.82	2,351,931.05	39.420824	-107.794278
- survey misses target center by 1119.7ft at 10835.0ft MD (10566.6 TVD, 1844.7 N, 484.4 E)									
- Circle (radius 50.0)									
McClung 29-02D Tgt	0.00	0.00	7,578.0	1,867.8	486.5	1,586,348.82	2,351,931.05	39.420824	-107.794278
- survey misses target center by 24.8ft at 7847.0ft MD (7579.4 TVD, 1844.6 N, 495.1 E)									
- Point									

Survey Annotations				
Measured Depth	Vertical Depth	Local Coordinates		Comment
(ft)	(ft)	+N/-S (ft)	+E/-W (ft)	
6,236.0	5,989.5	1,607.7	425.3	Tie in Survey @ 6236' MD
10,780.0	10,511.6	1,846.7	485.4	Last DP Survey @ 10780' MD
10,835.0	10,566.6	1,844.7	484.4	Projection to TD @ 10835' MD

Checked By: _____	Approved By: _____	Date: _____
-------------------	--------------------	-------------