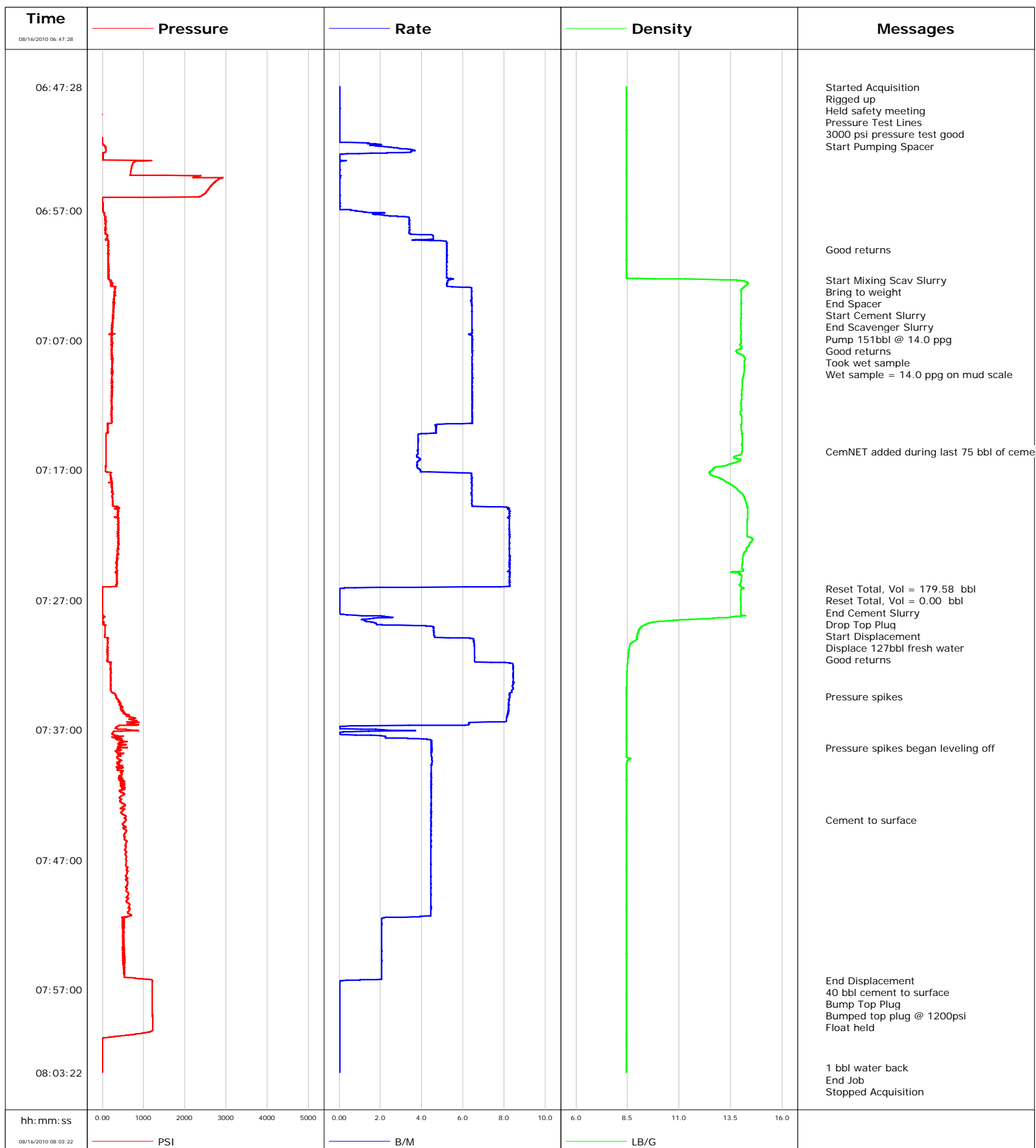


Well WF06B-22 K22 596
Field N. PARACHUTE
Engineer Dave Wanczyk
Country United States

Client ENCANA
SIR No. BG2T-00002
Job Type 9 5/8 Surface
Job Date 08-16-2010



Well			Field	Job Start	Customer	Job Number
WFO6B-22 K22 596			N. PARACHUTE	Aug/16/2010	ENCANA	BG2T-00002
Date	Time 24-hr clock	Treating Pressure PSI	Flow Rate B/M	Density LB/G	Volume BBL	Message
08/16/2010	07:00:01	148	5.2	8.44	13.5	
08/16/2010	07:01:40	159	5.2	8.44	22.1	
08/16/2010	07:02:20					Start Mixing Scav Slurry
08/16/2010	07:02:20	166	5.4	13.09	25.6	
08/16/2010	07:02:26					Bring to weight
08/16/2010	07:02:26	213	5.2	14.15	26.2	
08/16/2010	07:02:30					End Spacer
08/16/2010	07:02:30	218	5.2	14.26	26.5	
08/16/2010	07:02:57					Start Cement Slurry
08/16/2010	07:02:57	306	6.4	14.11	28.9	
08/16/2010	07:03:00					End Scavenger Slurry
08/16/2010	07:03:00	310	6.4	14.07	29.3	
08/16/2010	07:03:06					Pump 151bbl @ 14.0 ppg
08/16/2010	07:03:06	290	6.4	14.02	29.9	
08/16/2010	07:03:07					Good returns
08/16/2010	07:03:07	309	6.4	14.01	30.0	
08/16/2010	07:03:20	301	6.4	14.01	31.4	
08/16/2010	07:05:00	259	6.5	14.01	42.1	
08/16/2010	07:05:39					Took wet sample
08/16/2010	07:05:39	241	6.5	14.00	46.3	
08/16/2010	07:05:40					Wet sample = 14.0 ppg on mud scale
08/16/2010	07:05:40	236	6.5	14.00	46.4	
08/16/2010	07:06:40	232	6.5	13.99	52.8	
08/16/2010	07:08:20	234	6.5	14.18	63.6	
08/16/2010	07:10:00	231	6.5	14.07	74.4	
08/16/2010	07:11:40	218	6.5	14.02	85.1	
08/16/2010	07:13:20	216	6.5	14.03	95.9	
08/16/2010	07:15:00	90	3.8	14.05	103.1	
08/16/2010	07:15:32					CemNET added during last 75 bbl of cement
08/16/2010	07:15:32	95	3.8	14.05	105.2	
08/16/2010	07:16:40	83	3.8	13.21	109.5	
08/16/2010	07:18:20	222	6.4	13.73	118.9	
08/16/2010	07:20:00	375	8.2	14.32	130.0	
08/16/2010	07:21:40	382	8.2	14.29	143.7	
08/16/2010	07:23:20	373	8.3	14.17	157.4	
08/16/2010	07:25:00	352	8.3	13.92	171.2	
08/16/2010	07:26:08					Reset Total, Vol = 179.58 bbl
08/16/2010	07:26:08	3	0.0	14.08	179.6	
08/16/2010	07:26:09					Reset Total, Vol = 0.00 bbl
08/16/2010	07:26:09	-7	0.0	14.03	179.6	
08/16/2010	07:26:11					End Cement Slurry
08/16/2010	07:26:11	-9	0.0	14.00	179.6	
08/16/2010	07:26:14					Drop Top Plug
08/16/2010	07:26:14	-10	0.0	13.98	179.6	
08/16/2010	07:26:15					Start Displacement
08/16/2010	07:26:15	-10	0.0	13.98	179.6	
08/16/2010	07:26:40	-7	0.0	13.98	179.6	
08/16/2010	07:28:20	6	2.6	13.45	179.9	
08/16/2010	07:30:00	126	6.5	8.96	185.9	
08/16/2010	07:30:22					Displace 127bbl fresh water
08/16/2010	07:30:22					Good returns
08/16/2010	07:30:22	126	6.5	8.65	188.3	
08/16/2010	07:31:40	116	6.6	8.51	196.8	
08/16/2010	07:33:20	201	8.4	8.46	210.6	

Well			Field		Job Start		Customer		Job Number	
WFO6B-22 K22 596			N. PARACHUTE		Aug/16/2010		ENCANA		BG2T-00002	
Date	Time 24-hr clock	Treating Pressure PSI	Flow Rate B/M	Density LB/G	Volume BBL	Message				
08/16/2010	07:34:24	334	8.3	8.45	219.5					
08/16/2010	07:35:00	431	8.2	8.45	224.5					
08/16/2010	07:36:40	401	3.4	8.44	237.5					
08/16/2010	07:38:20	475	4.5	8.44	241.6					
08/16/2010	07:38:23					Pressure spikes began leveling off				
08/16/2010	07:38:23	605	4.5	8.44	241.8					
08/16/2010	07:40:00	377	4.5	8.45	249.1					
08/16/2010	07:41:40	417	4.4	8.45	256.5					
08/16/2010	07:43:20	461	4.4	8.44	263.9					
08/16/2010	07:43:57					Cement to surface				
08/16/2010	07:43:57	572	4.4	8.44	266.7					
08/16/2010	07:45:00	540	4.4	8.44	271.3					
08/16/2010	07:46:40	571	4.4	8.44	278.7					
08/16/2010	07:48:20	582	4.4	8.44	286.1					
08/16/2010	07:50:00	623	4.4	8.44	293.5					
08/16/2010	07:51:40	527	2.1	8.45	300.3					
08/16/2010	07:53:20	513	2.1	8.44	303.8					
08/16/2010	07:55:00	520	2.1	8.44	307.2					
08/16/2010	07:56:16					End Displacement				
08/16/2010	07:56:16	1203	1.0	8.44	309.8					
08/16/2010	07:56:17					40 bbl cement to surface				
08/16/2010	07:56:17	1203	0.4	8.45	309.8					
08/16/2010	07:56:18					Bump Top Plug				
08/16/2010	07:56:18	1203	0.2	8.44	309.8					
08/16/2010	07:56:38					Bumped top plug @ 1200psi				
08/16/2010	07:56:38					Float held				
08/16/2010	07:56:38	1207	0.0	8.44	309.8					
08/16/2010	07:56:40	1210	0.0	8.44	309.8					
08/16/2010	07:58:20	1213	0.0	8.45	309.8					
08/16/2010	08:00:00	1216	0.0	8.45	309.8					
08/16/2010	08:01:40	-7	0.0	8.45	309.8					
08/16/2010	08:03:01					1 bbl water back				
08/16/2010	08:03:01	-7	0.0	8.45	309.9					
08/16/2010	08:03:08					End Job				
08/16/2010	08:03:08	-7	0.0	8.45	309.9					
08/16/2010	08:03:20	-7	0.0	8.45	309.9					

Post Job Summary

Average Pump Rates, bbl/min					Volume of Fluid Injected, bbl				
Slurry 0.0	N2	Mud 0.0	Maximum Rate 0.0		Total Slurry 151.0	Mud 0.0	Spacer 20.0	N2	
Treating Pressure Summary, psi					Breakdown Fluid				
Maximum 1200	Final 0	Average 400	Bump Plug to	Breakdown	Type		Volume	Density	
Avg. N2 Percent		Designed Slurry Volume 151.0 bbl		Displacement 127.0 bbl	Mix Water Temp 70 degF		Cement Circulated to Surface? <input checked="" type="checkbox"/>	Volume 40.0 bbl	
							Washed Thru Perfs <input type="checkbox"/>	To	
Customer or Authorized Representative Ed Asuchak				Schlumberger Supervisor Dave Wanczyk			Circulation Lost <input type="checkbox"/>	Job Completed <input checked="" type="checkbox"/>	
							-	-	