

# WILLIAMS PRODUCTION RMT COMPANY

Well location, STRAIT SG 342-23, located as shown in Lot 3 of Section 23, T7S, R96W, 6th P.M., Garfield County, Colorado.

## BASIS OF ELEVATION

SPOT ELEVATION AT THE NORTHWEST CORNER OF SECTION 30, T5S, R95W, 6th P.M. TAKEN FROM THE FORKED GULCH QUADRANGLE, COLORADO, GARFIELD COUNTY, 7.5 MINUTE SERIES (TOPOGRAPHICAL MAP) PUBLISHED BY THE UNITED STATES DEPARTMENT OF THE INTERIOR, GEOLOGICAL SURVEY. SAID ELEVATION IS MARKED AS BEING 5966 FEET.

## BASIS OF BEARINGS

BASIS OF BEARINGS IS A G.P.S. OBSERVATION.

NOTE: SEE CURRENT FOOTAGE PLAT #6 FOR EXISTING IMPROVEMENT WITHIN 400' OF THE PROPOSED WELL HEAD.

PLAT #1

Position Re-Established Mathematically Grant Boundary Method (Not Set)



## CERTIFICATE

THIS IS TO CERTIFY THAT THE ABOVE PLAT WAS PREPARED AND LOCATION AS SHOWN WAS MADE ON THE GROUND BY ME OR UNDER MY SUPERVISION AND THAT THE SAME ARE TRUE AND CORRECT TO THE BEST OF MY KNOWLEDGE AND BELIEF.

REGISTERED LAND SURVEYOR  
REGISTRATION NO. 77492  
STATE OF COLORADO  
08-11-2011

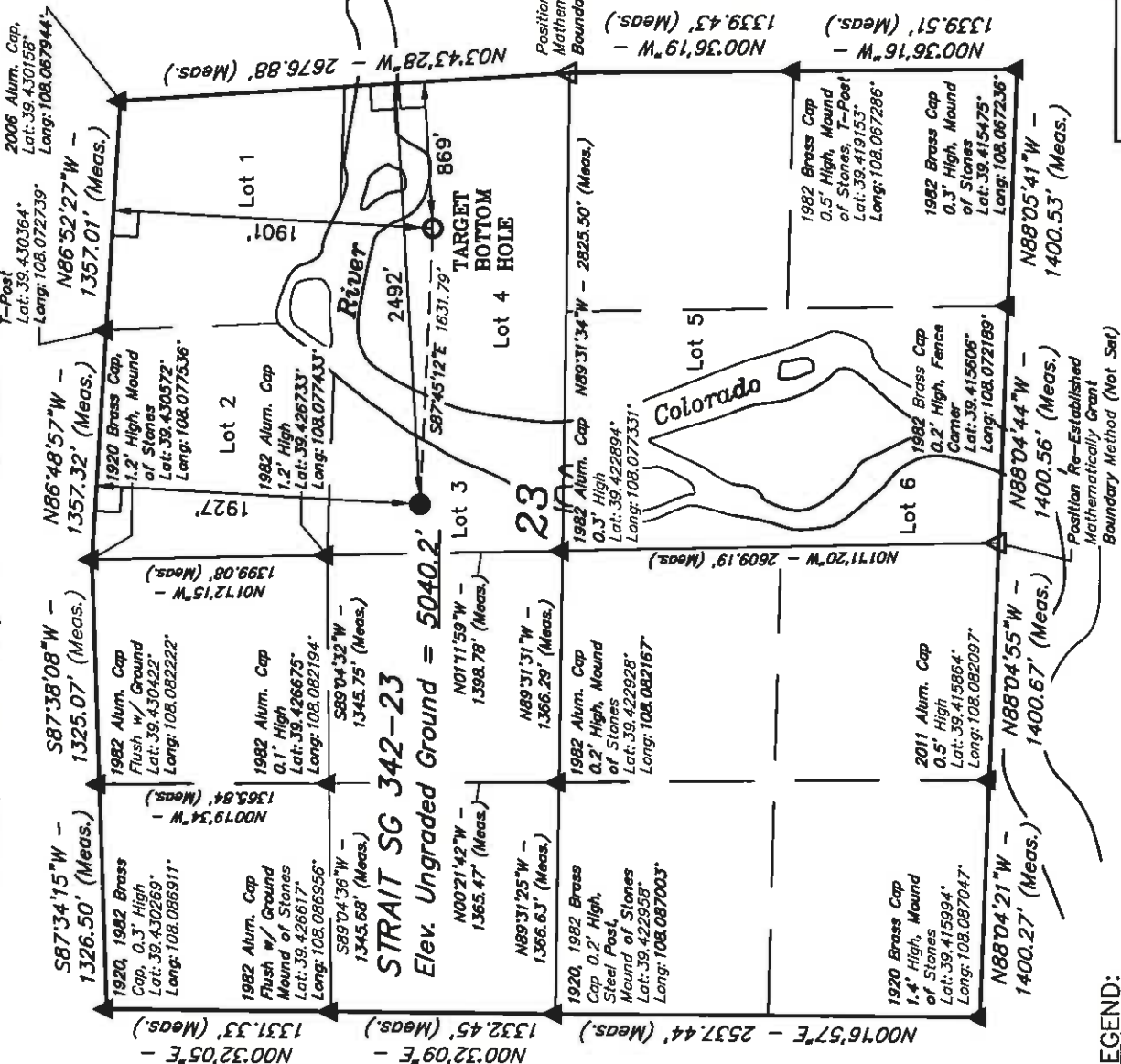
## UTAH ENGINEERING & LAND SURVEYING

85 SOUTH 200 EAST - VERNAL, UTAH 84078

(435) 789-1017

SCALE	1" = 1000'	DATE SURVEYED:	04-14-11	DATE DRAWN:	08-11-11
PARTY	B.J. B.B. D.R.B.	REFERENCES	G.L.O. PLAT		
WEATHER	WARM	FILE			
					WILLIAMS PRODUCTION RMT COMPANY

T7S, R96W, 6th P.M.



Position Re-Established Mathematically Grant Boundary Method (Not Set)

## LEGEND:

- = 90° SYMBOL
- = PROPOSED WELL HEAD.
- ▲ = SECTION CORNERS LOCATED.

NAD 83 (TARGET BOTTOM HOLE)	NAD 83 (SURFACE LOCATION)
LATITUDE = 39°25'30.17" (39.425047)	LATITUDE = 39°25'30.81" (39.425225)
LONGITUDE = 108°04'14.18" (108.070800)	LONGITUDE = 108°04'34.93" (108.076389)
STATE PLANE - (COLD, CENTRAL - NAD 83)	STATE PLANE - (COLD, CENTRAL - NAD 83)
N = 1589978.300	N = 1590087.028
E = 2273941.400	E = 2272313.808

PDOP = 1.9