

Schlumberger

Company: **Noble Energy Inc**

Well: **Gardner Trusts 31-20**

Field: **Schramm**

County: **Yuma**

State: **Colorado**

Well: **Gardner Trusts 31-20**
Field: **Schramm**
County: **Yuma**
State: **Colorado**

Field: **Schramm**
County: **Yuma**
State: **Colorado**

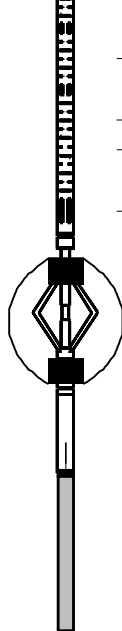
County: **Yuma** State: **Colorado**

[illegible]

Logging Date				
Run Number				
Depth Driller				
Schlumberger Depth				
Bottom Log Interval				
Top Log Interval				
Casing Driller Size @ Depth		@		
Casing Schlumberger				
Bit Size				
Type Fluid In Hole				
Density	Viscosity			
Fluid Loss	PH			
Source Of Sample				
RM @ Measured Temperature		@		
RMF @ Measured Temperature		@		
RMC @ Measured Temperature		@		
Source RMF	RMC			
RM @ MRT	RMF @ MRT	@		@
Maximum Recorded Temperatures				
Circulation Stopped	Time			
Logger On Bottom	Time			
Unit Number	Location			
Recorded By				
Witnessed By				

OTHER SERVICES1 OS1: SWABBING OS2: PERF 3 1/8 HEGS OS3: OS4: OS5:	OTHER SERVICES2 OS1: OS2: OS3: OS4: OS5:
REMARKS: RUN NUMBER 1	REMARKS: RUN NUMBER 2
CORRELATED TO TRIPLE COMBO	
RAN ON 17-MAR-2011 BY SCHLUMBERGER	

REPEAT AND MAIN PASS					
RAN UNDER 0 PSI					
CREW: WILEY					
THANK YOU					
RUN 1			RUN 2		
SERVICE ORDER #: PROGRAM VERSION: FLUID LEVEL:			SERVICE ORDER #: PROGRAM VERSION: FLUID LEVEL:		
LOGGED INTERVAL	START	STOP	LOGGED INTERVAL	START	STOP
EQUIPMENT DESCRIPTION					
RUN 1			RUN 2		
SURFACE EQUIPMENT					
WITM-A PSC_16MHZ					
DOWNHOLE EQUIPMENT					
MH-22 MH-22			26.7		
AH-38 Detail MT TelStatus CTEM			25.1		
PSPT PSC-A PSPT-B 2810 PSTC-A PBMS-B CQG_F_Mano RTD_Thermometer GR CCL PBMS			24.8		
GR			21.1		
Well_Temp CQG Manom CCL			18.0 17.7 17.3		
PBMS PSTC			16.5		
SCMT-CB SCMC-CA 8170 SECH-CA SCMS-CB 8209 SCMX-CA			16.5		
DT			11.0		



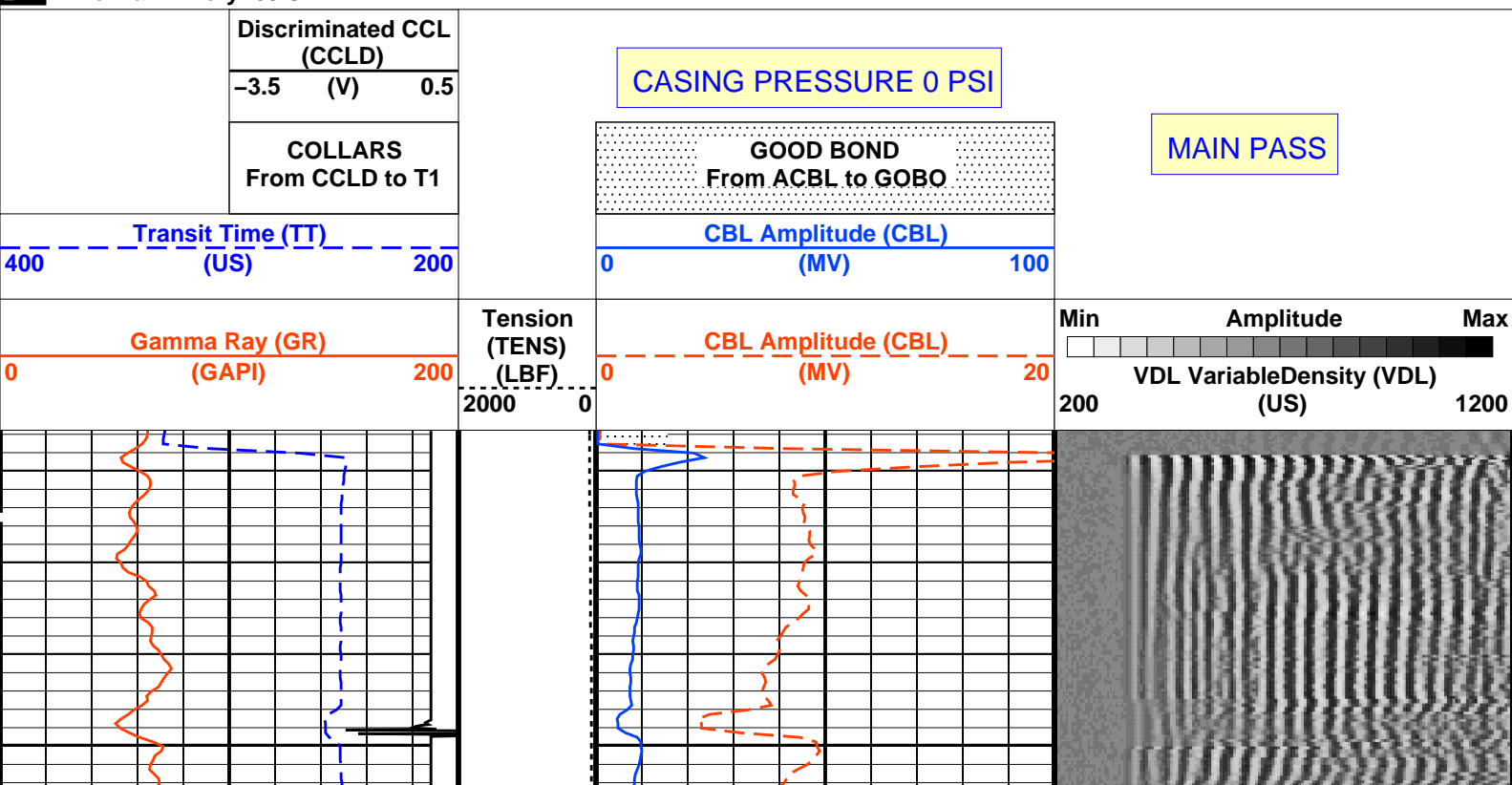
MAXIMUM STRING DIAMETER 7.50 IN
MEASUREMENTS RELATIVE TO TOOL ZERO
ALL LENGTHS IN FEET

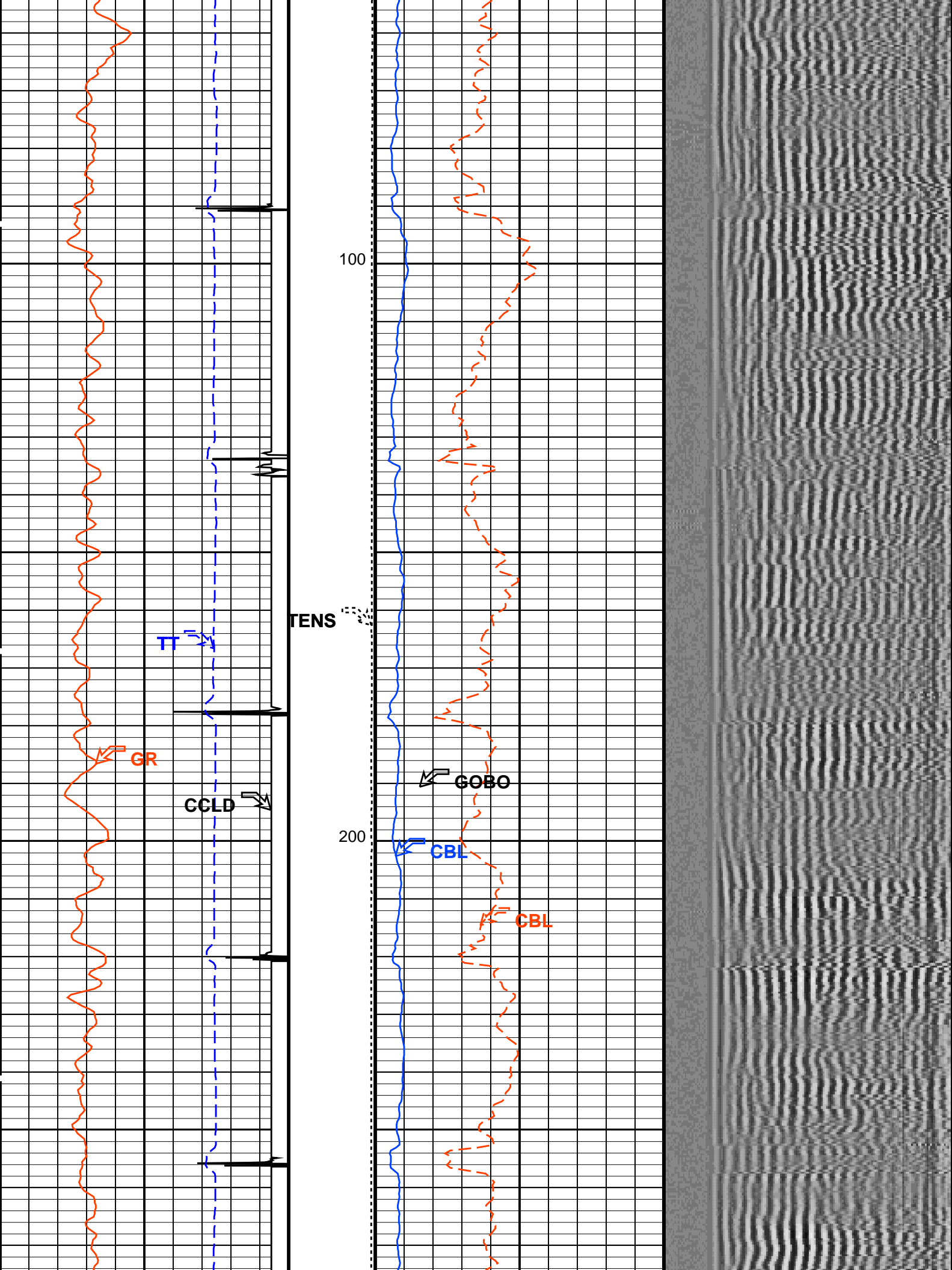
Well: Gardner Trusts 31-20

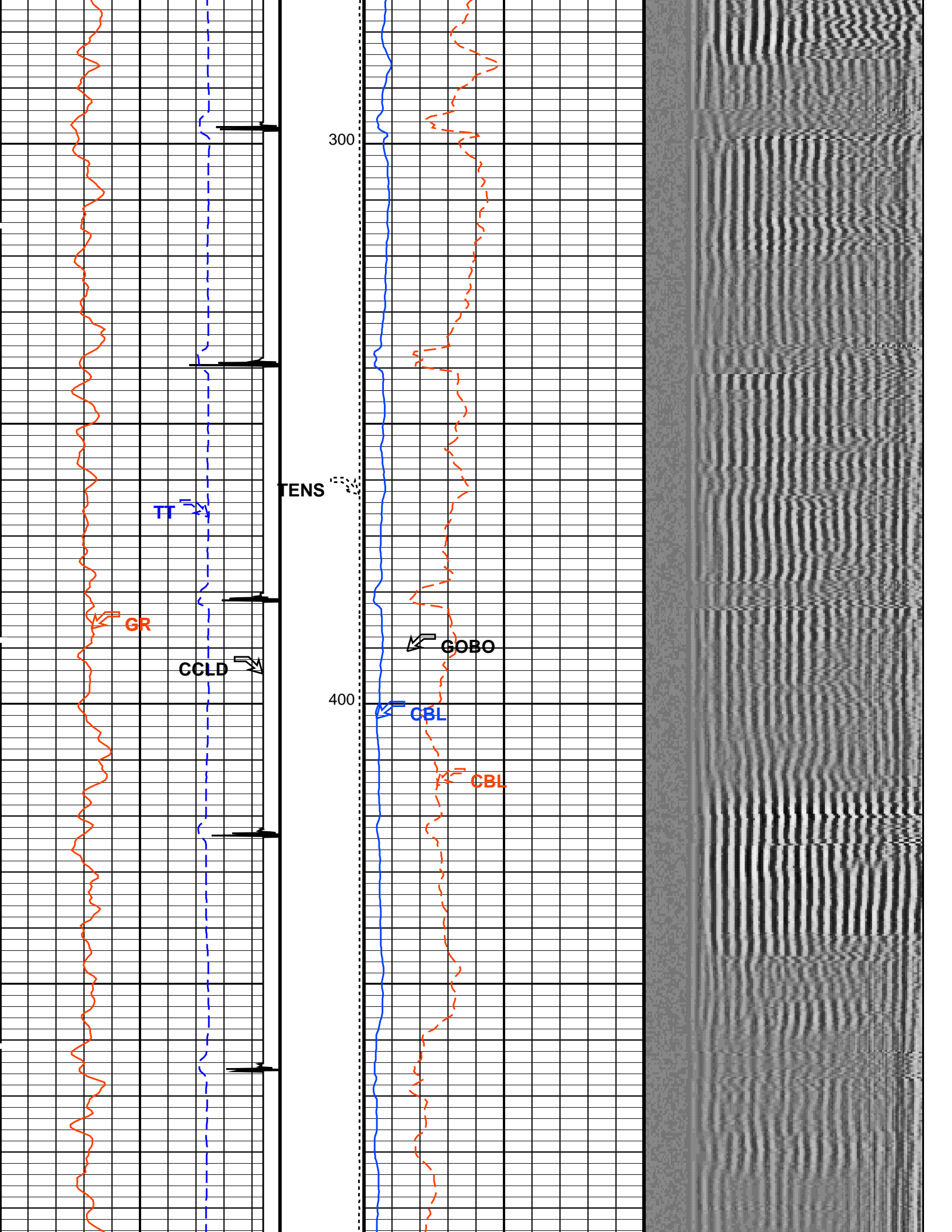
DEFAULT	SCMT_PSP_007LUP	FN:6	PRODUCER	18-Apr-2011 08:23
---------	-----------------	------	----------	-------------------

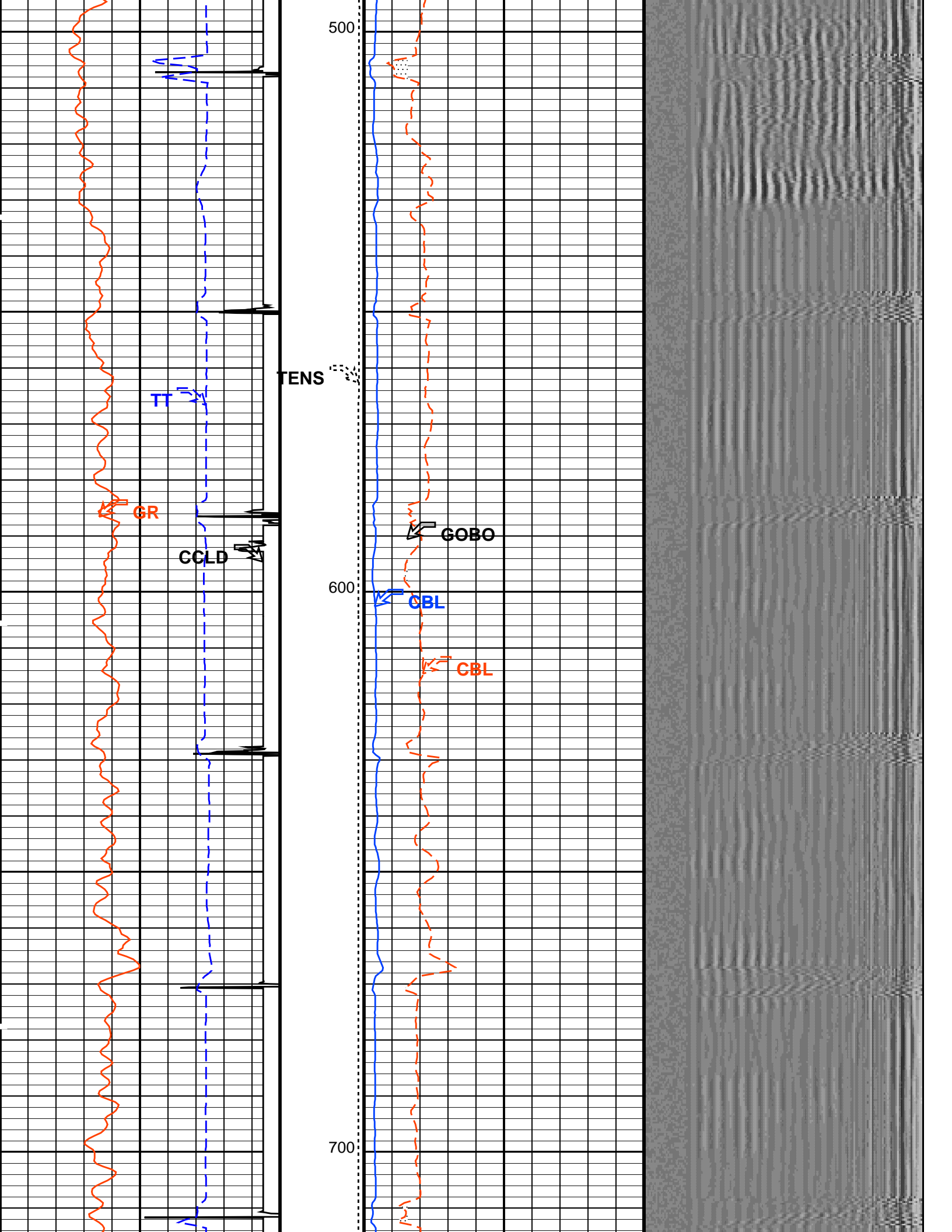
SCMT-CB	19C0-187	PSPT	19C0-187
---------	----------	------	----------

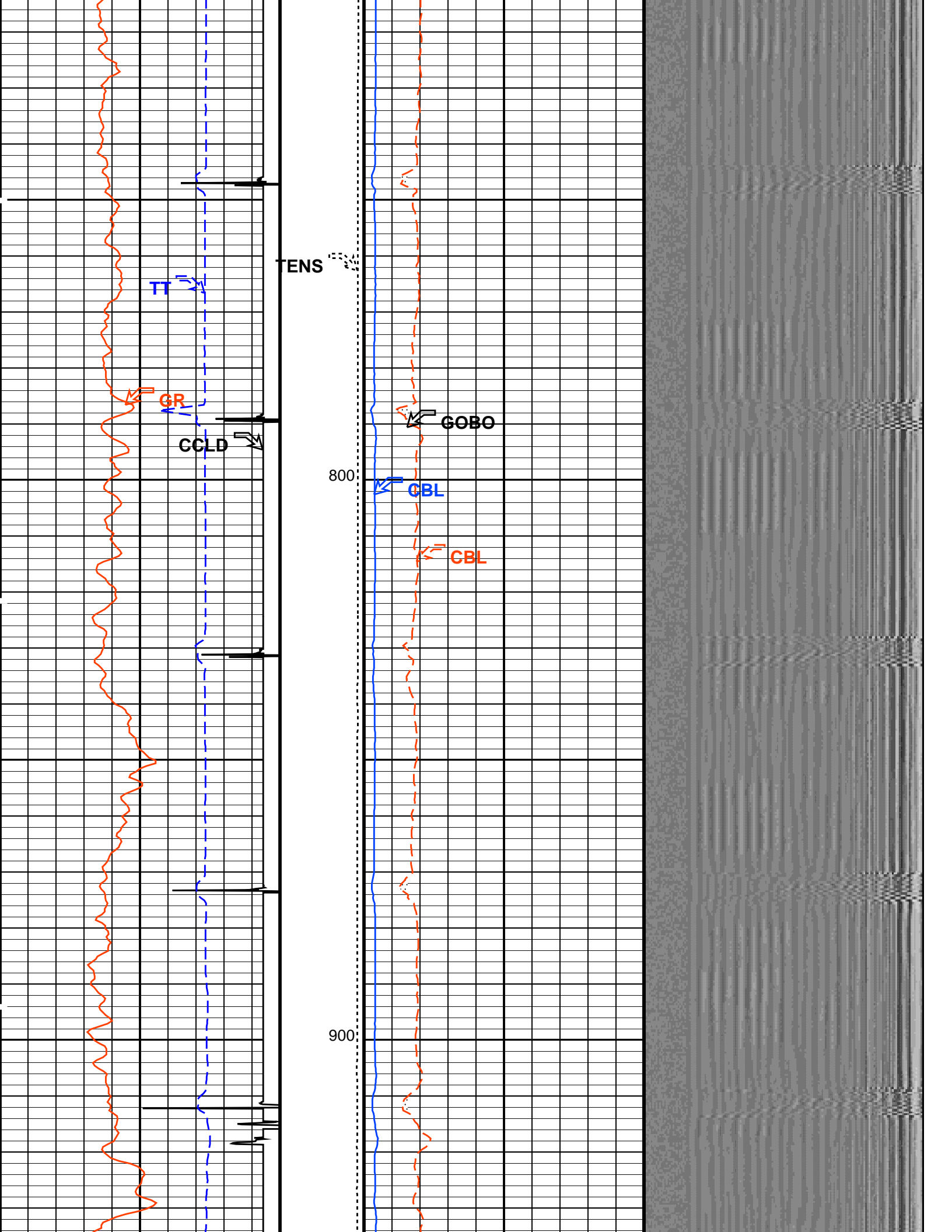
Time Mark Every 60 S

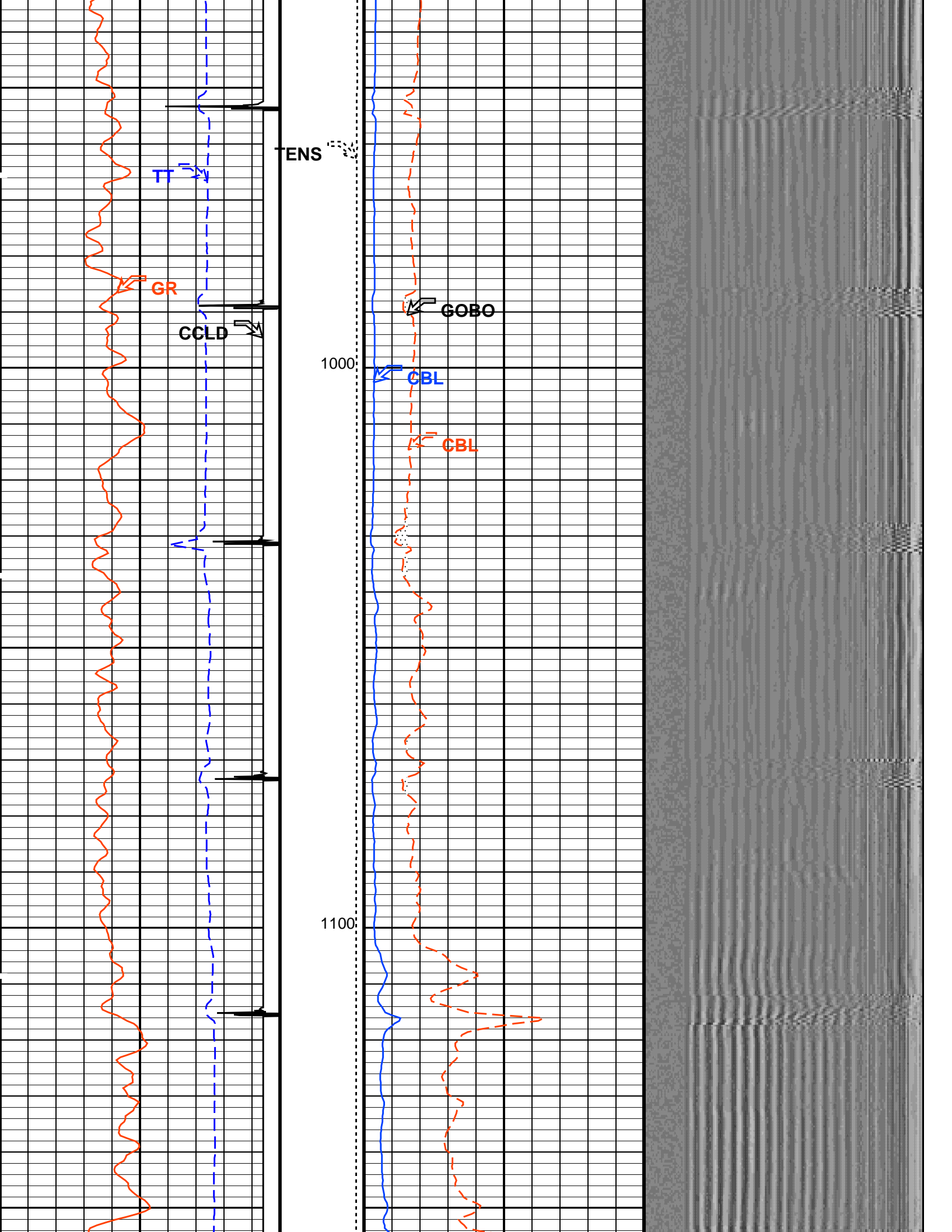


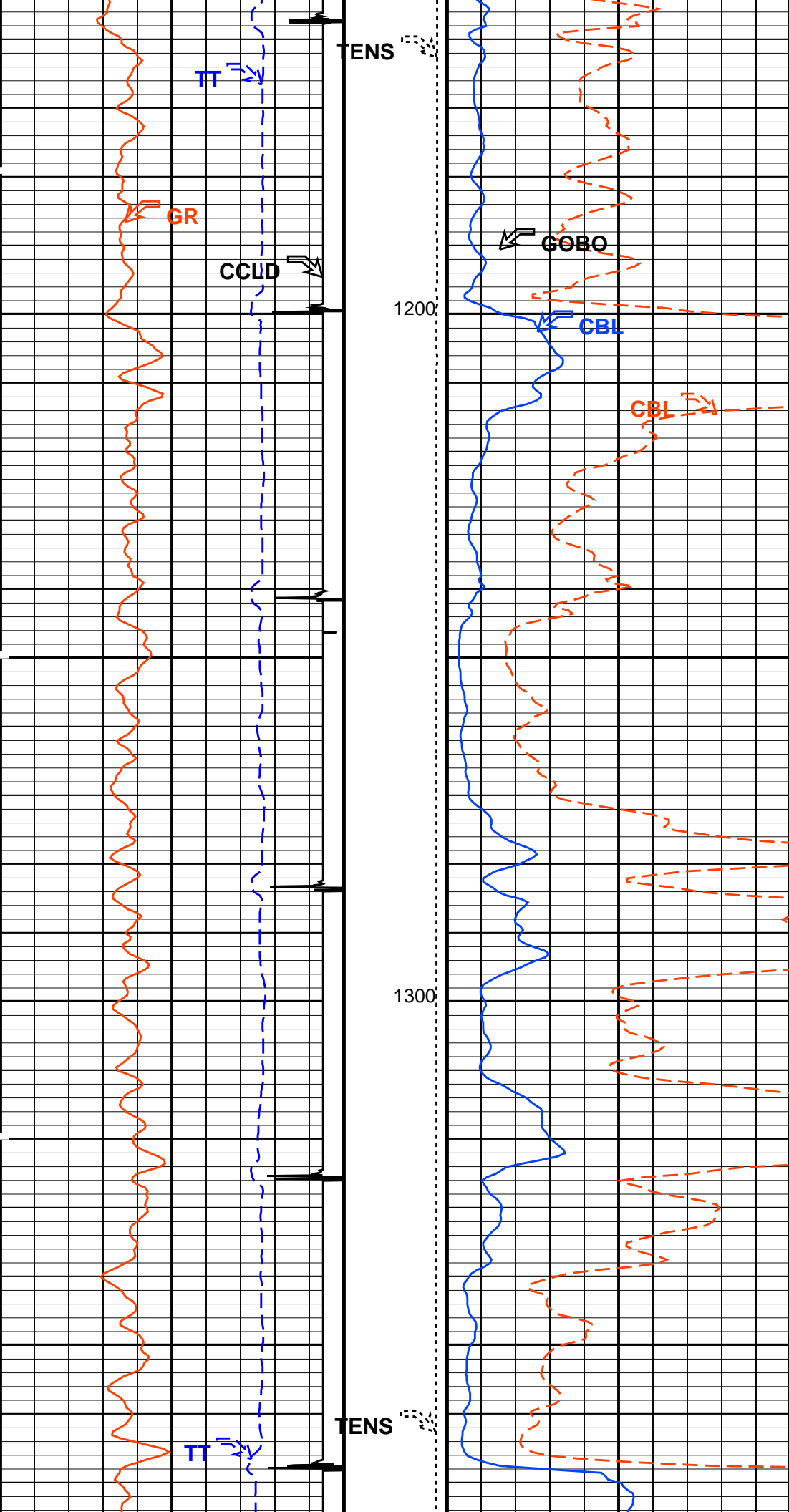


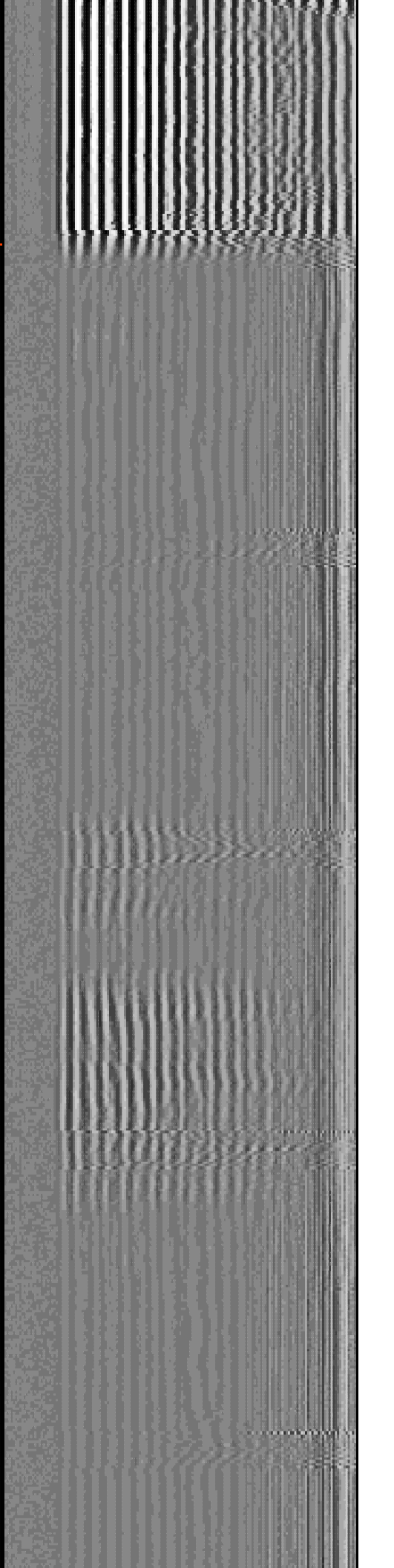
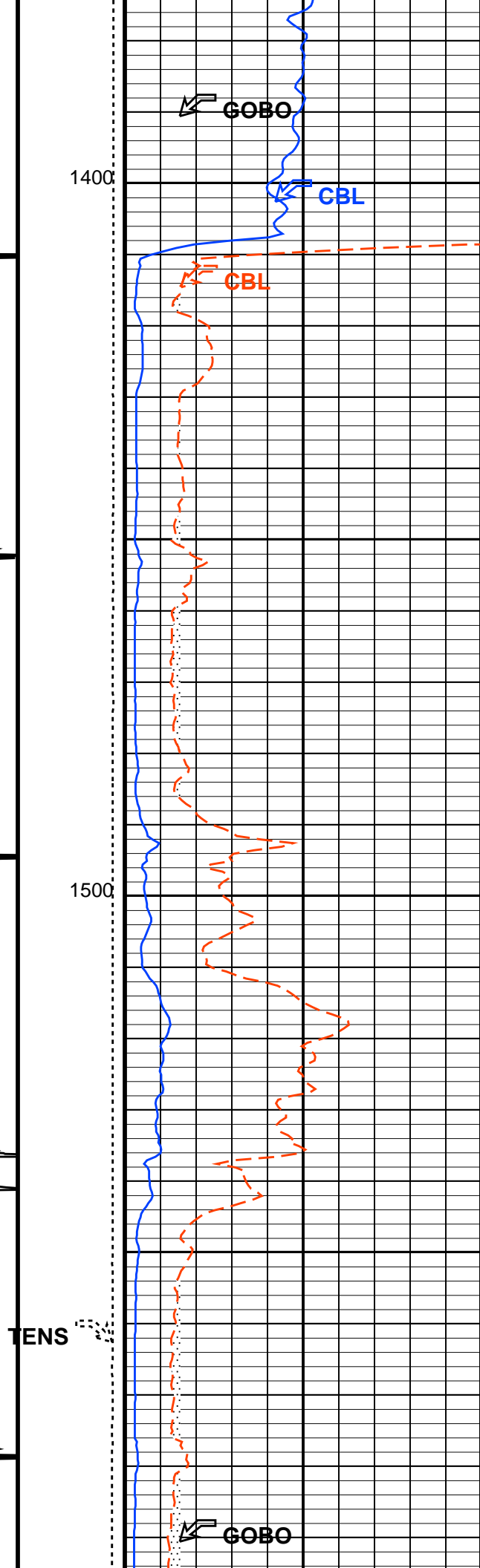
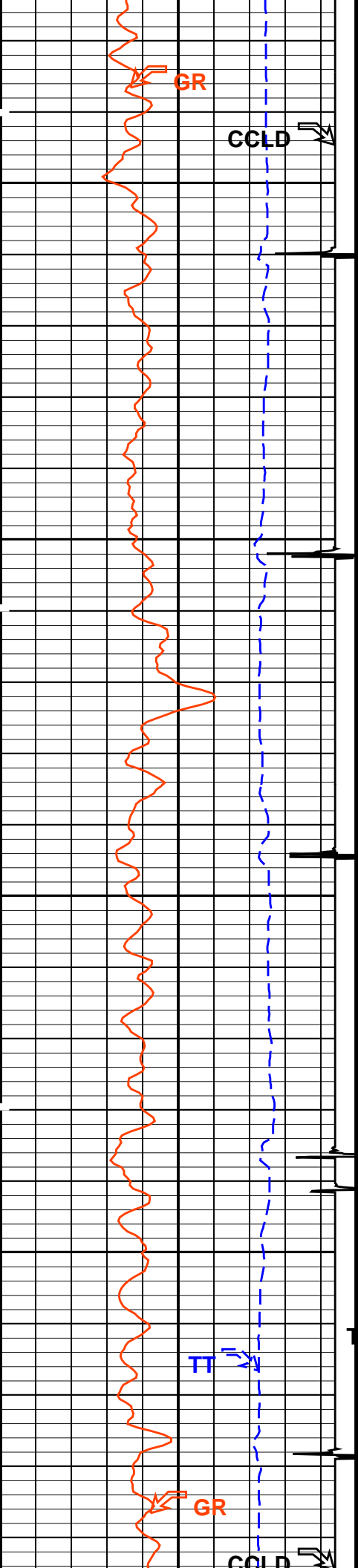


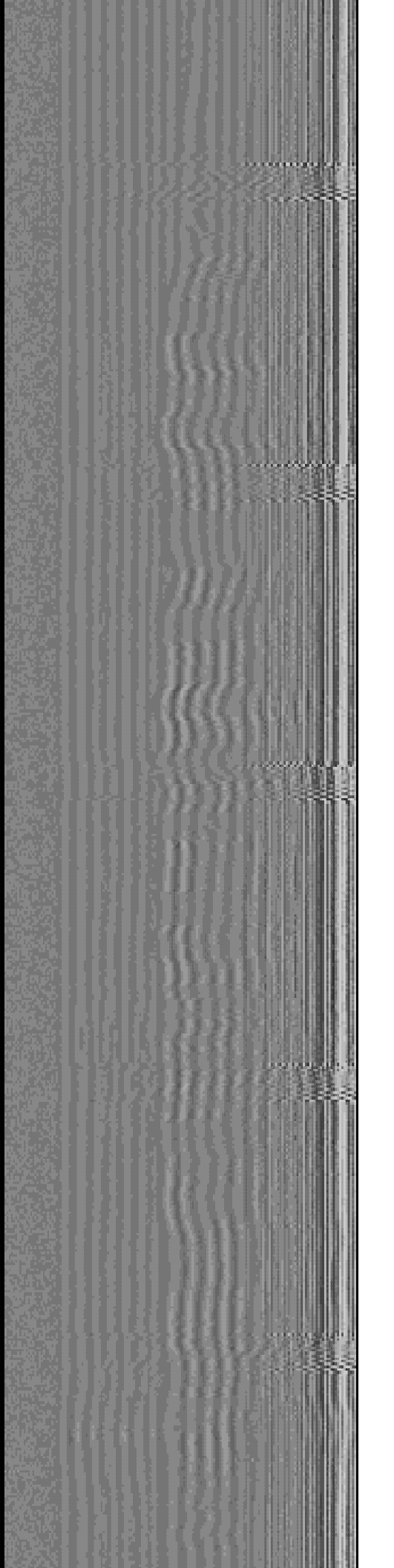
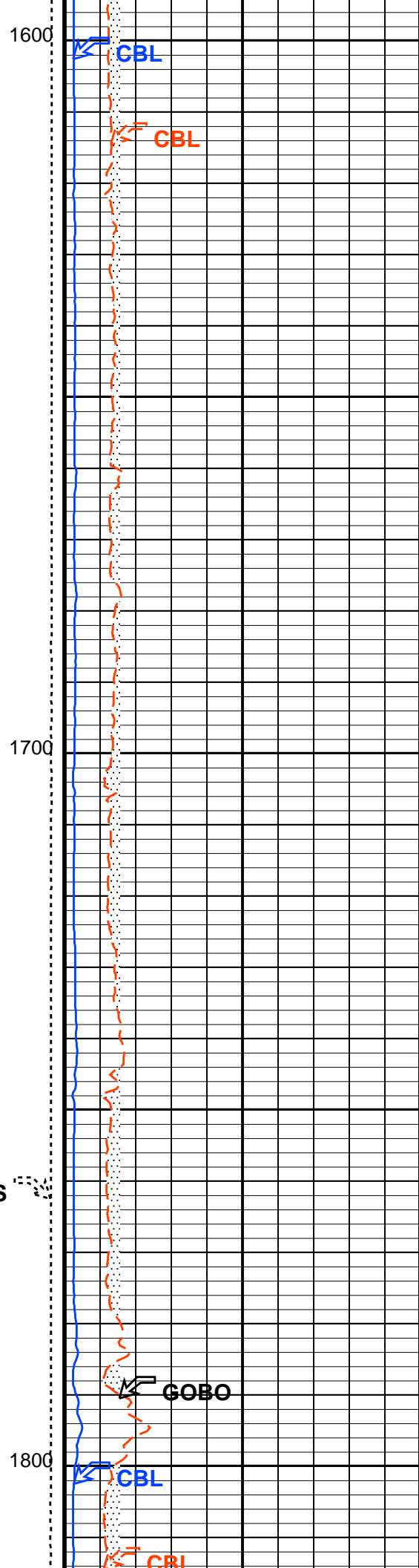
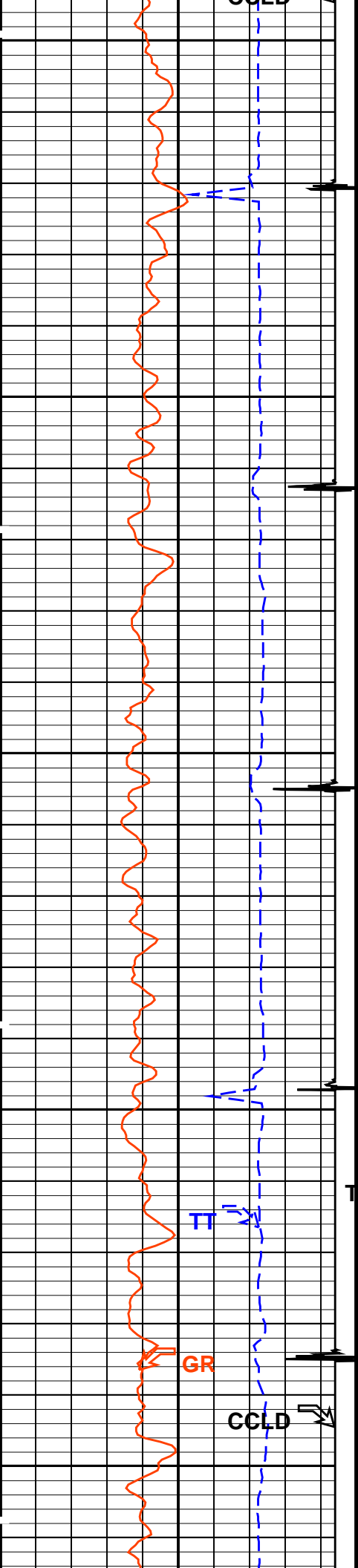


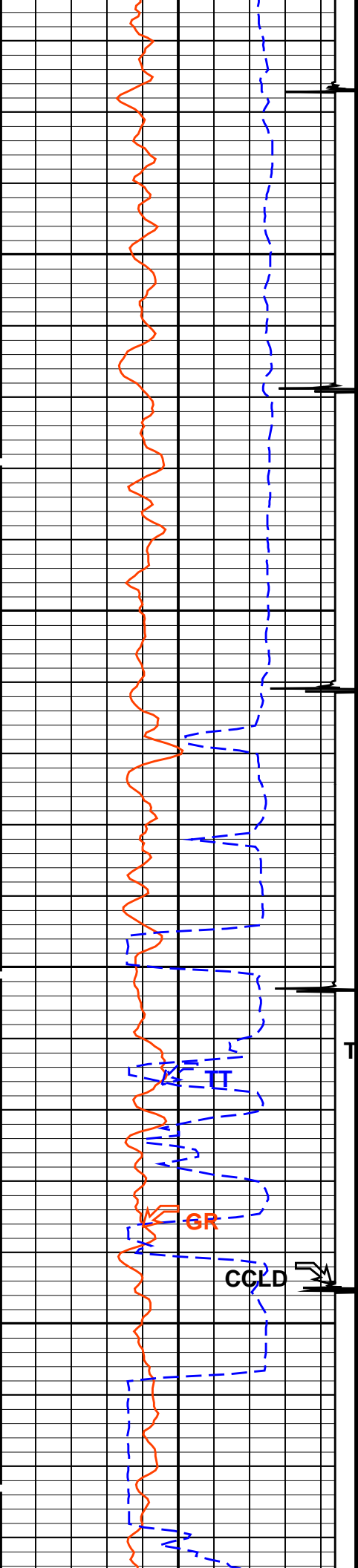








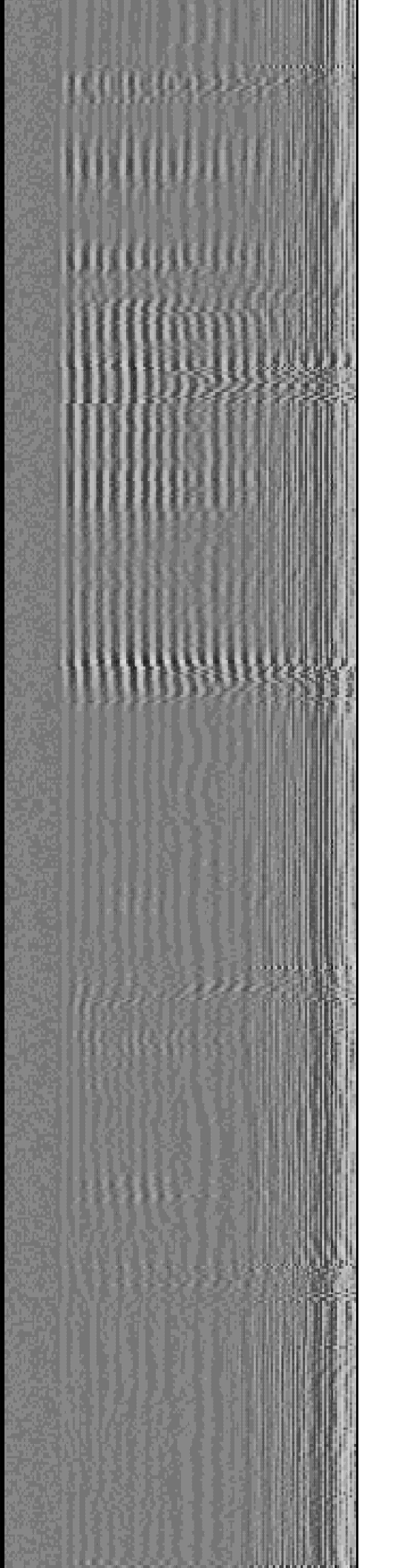
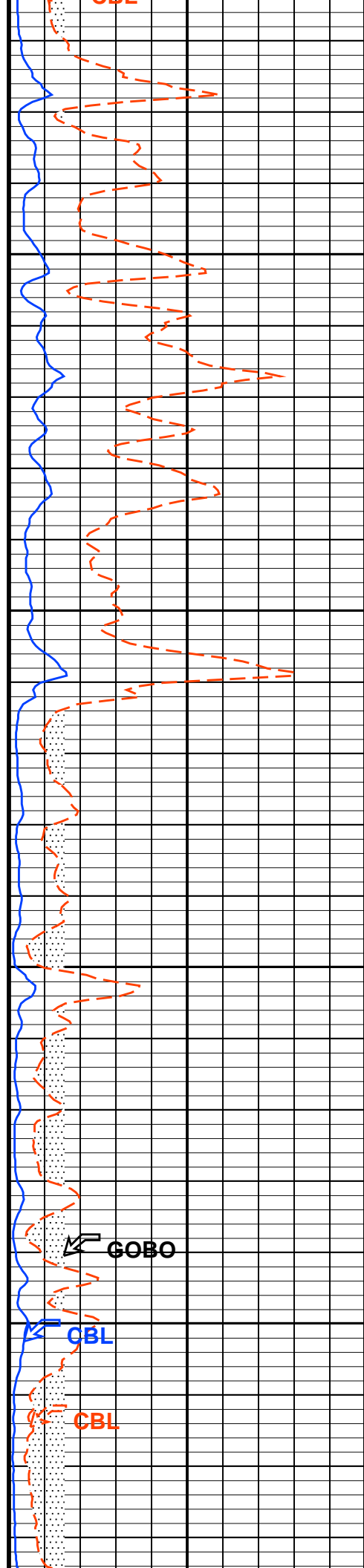


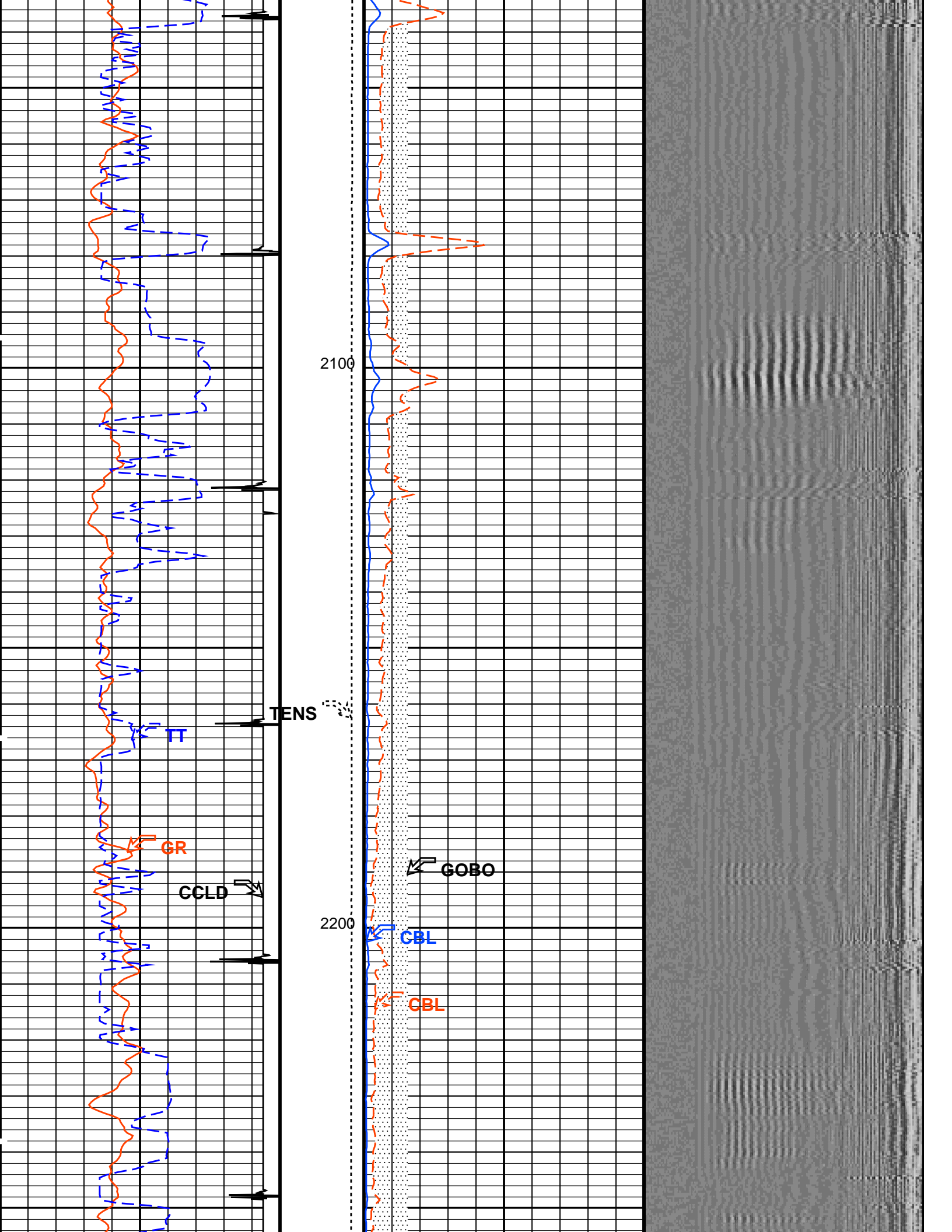


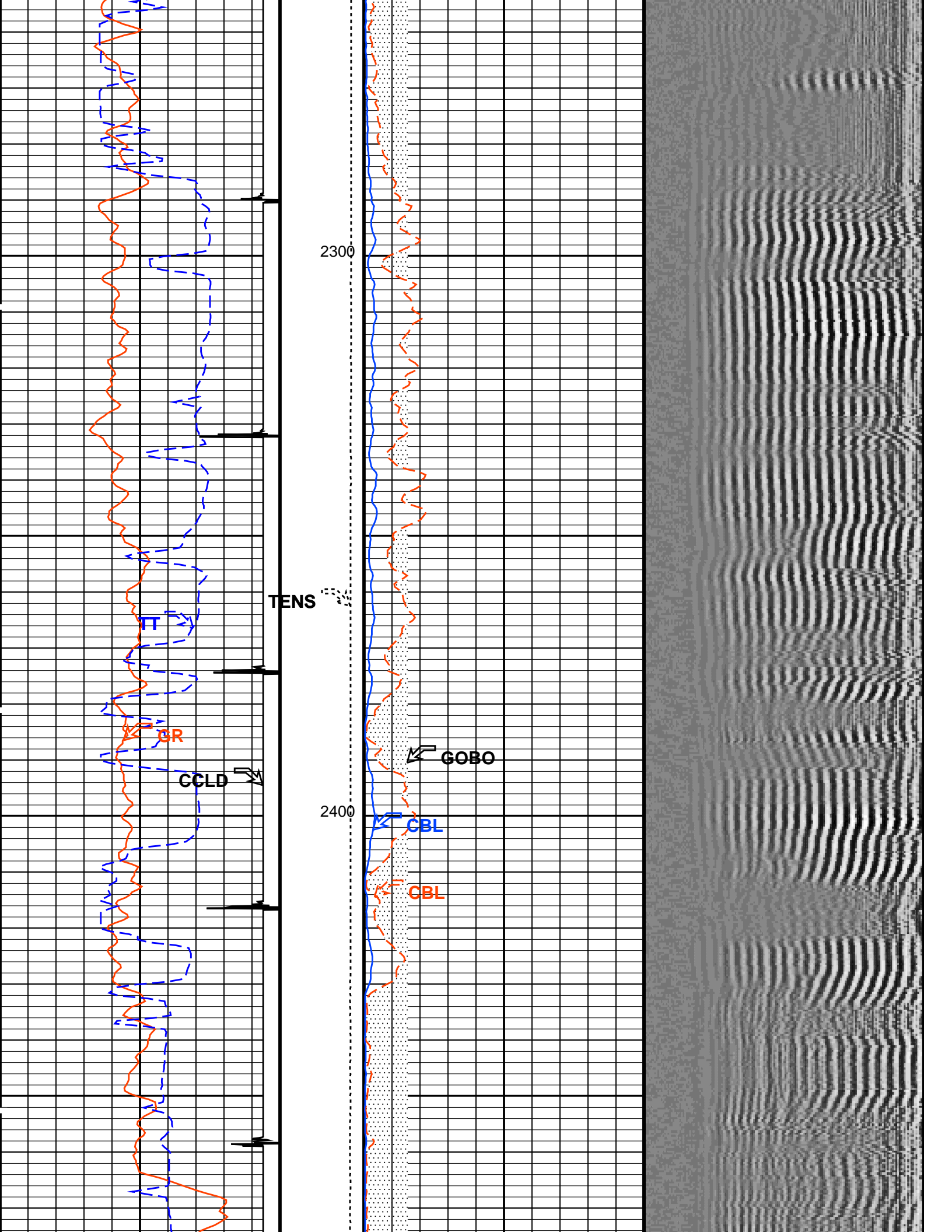
TENS

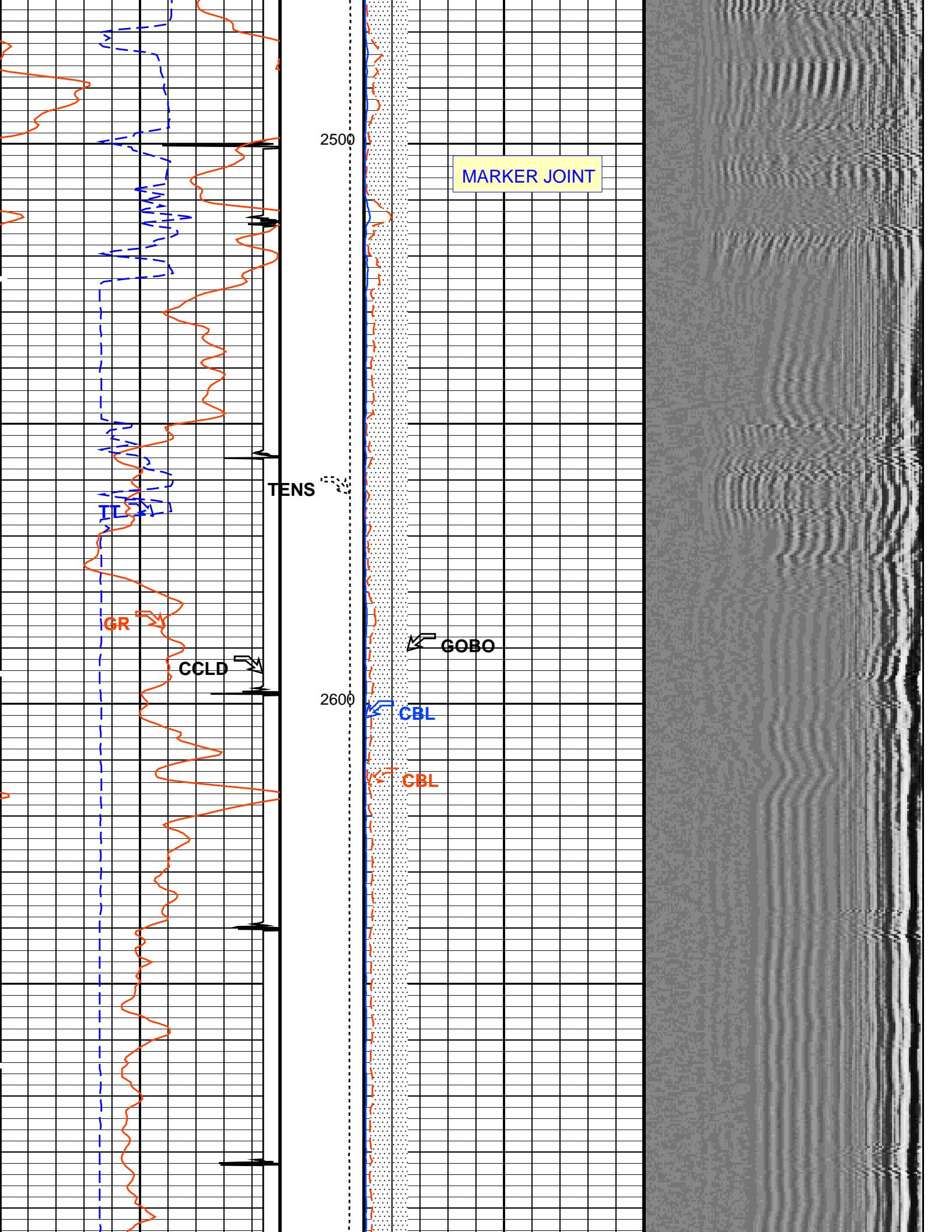
1900

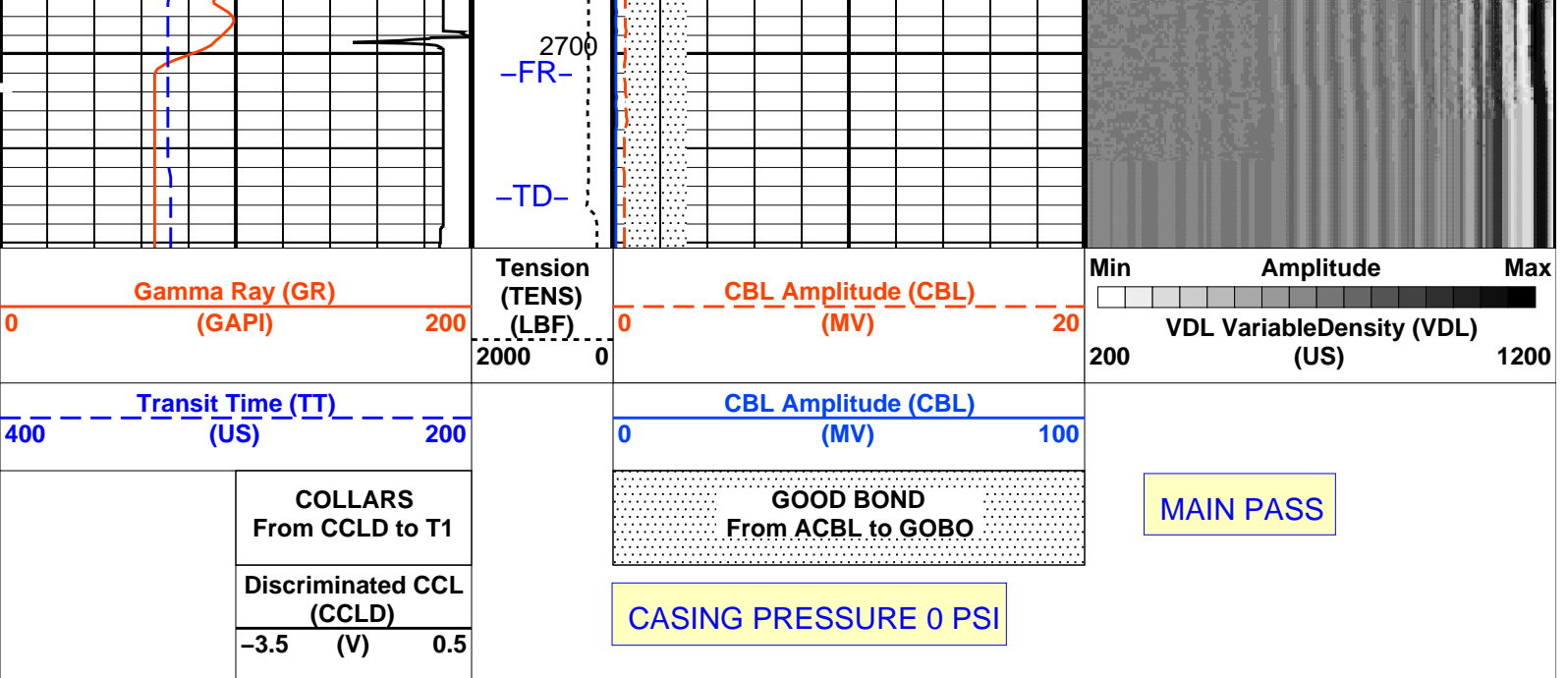
2000











PIP SUMMARY

Time Mark Every 60 S

Parameters

DLIS Name	Description	Value
SCMT-CB: Slim Cement Mapping Tool, 1-11/16 OD		
BILI	Bond Index Level for Zone Isolation	0.8
CB3D	SCMT CBL 3 ft Peak Detection Mode	PEAK
CB3G	SCMT CBL 3 ft Peak Detection T0_Delay and Noise Gate	228.424 US
CB3T	SCMT CBL 3 ft Fixed Threshold Level	20 MV
CB5D	SCMT CBL 5 ft Peak Detection Mode	PEAK
CB5G	SCMT CBL 5 ft Peak Detection T0_Delay and Noise Gate	342.424 US
CB5T	SCMT CBL 5 ft Fixed Threshold Level	20 MV
CBLG	CBL Gate Width	40 US
CBRA	CBL LQC Reference Amplitude in Free Pipe	80 MV
CMCF	CBL Cement Type Compensation Factor	1
CMTc	SCMT Slow Channel Multiplexer Mode	SCAN
CMTM	SCMT Operating Mode	LOG
CSCS	SCMT Slow Channel Index	VCC
CTHI	Casing Thickness	0.255617 IN
DTF	Delta-T Fluid	204.5 US/F
FATT	Acoustic Attenuation due to Fluid	0 DB/F
FCF	CBL Fluid Compensation Factor	1
GOBO	Good Bond	1.53811 MV
MAPD	SCMT MAP Peak Detection Mode	PEAK
MAPG	SCMT MAP Peak Detection T0_Delay and Noise Gate	171.424 US
MAPT	SCMT MAP Fixed Threshold Level	30 MV
MATT	Maximum Attenuation	16.5449 DB/F
MCCF	MAP Cement Type Compensation Factor	1
MCI	Minimum Cemented Interval for Isolation	1.25 FT
MMSA	MAP Minimum Sonic Amplitude	4.27504 MV
MSA	Minimum Sonic Amplitude	0.572744 MV
PEDE	Peak Detection On/Off Switch in Playback	OFF
VDLG	VDL Manual Gain	5
ZCMT	Acoustic Impedance of Cement	6.8 MRAY
System and Miscellaneous		
CWEI	Casing Weight	11.60 LB/F
DFD	Drilling Fluid Density	8.40 LB/G
TD	Total Depth	-50000 FT

Format: CBL_VDL Vertical Scale: 5" per 100'

Graphics File Created: 18-Apr-2011 08:23

OP System Version: 19C0-187

SCMT-CB 19C0-187 PSPT 19C0-187

Output DLIS Files

DEFAULT SCMT_PSP_007LUP FN:6 PRODUCER 18-Apr-2011 08:23

Company: Noble Energy Inc

Well: Gardner Trusts 31–20

Field: Schramm

County: Yuma

State: Colorado

Schlumberger

CEMENT BOND

GAMMA RAY

CASING COLLAR LOG