



accuracy or correctness of the data, costs, damages or interpretations are not warranted.

**Noble Energy Inc.**  
DeJong USX AB13-06P

Weld	Wattenberg	Weld	State/Province	Colorado	Other Services
21201 ENI & 10801 EMI					

SE NW Sec. 13, Twp. 7N, Rge. 64W	Induction
Elevation 4820	Elevation
GL	K.B. 4833

KG	September 19, 2010	GL 4820
1		
7185		

for other measures or willful negligence or for negligent representation made by the insured and conditions set forth in the policy.

Comment:

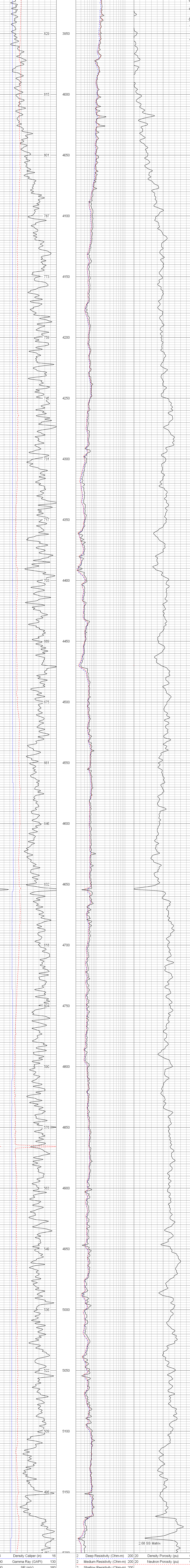
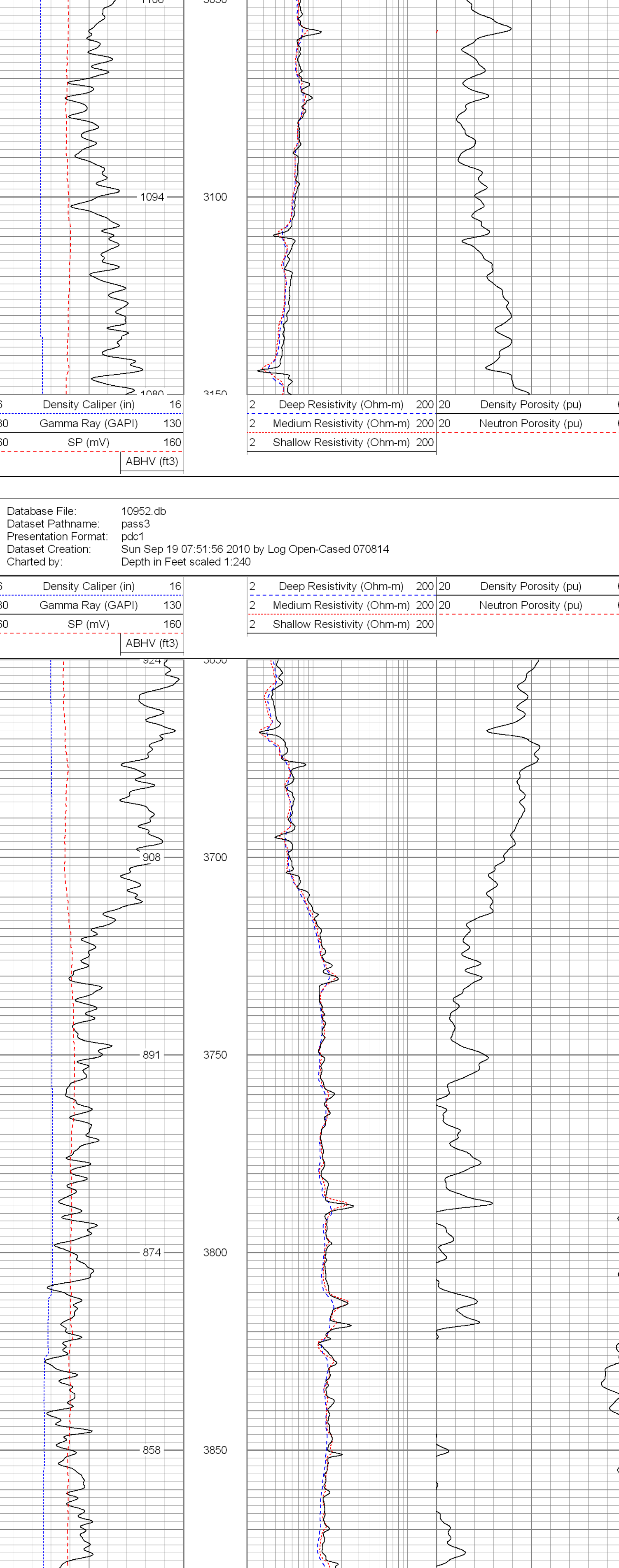
The calculation of the amount payable for Drilling and/or using PH is based on the following information: 05-123-3

7156			
2360			
828			
Not Logged			
7.70e11			

Chem Cel	
9.2 / 28	
7.0 / mc	
Flowline	
3.44 @ 55 F	

[illegible][illegible]

2	2
---	---



Database File:	10952.db
Dataset Pathname:	pass3.1
Presentation Format:	split20
Dataset Creation:	Sun Sep 19 08:08:22 2010 by Calc Open-Cased 070814
Charted by:	Depth in Feet scale 1:240

	Gamma Ray (GAPI)	200	2	Deep Resistivity (Ohm-m)	200	20	Density Porosity (pu)
	SP (mV)	200	2 <td>Shallow Resistivity (Ohm-m)</td> <td>200</td> <td>20</td> <td>Neutron Porosity (pu)</td>	Shallow Resistivity (Ohm-m)	200	20	Neutron Porosity (pu)

