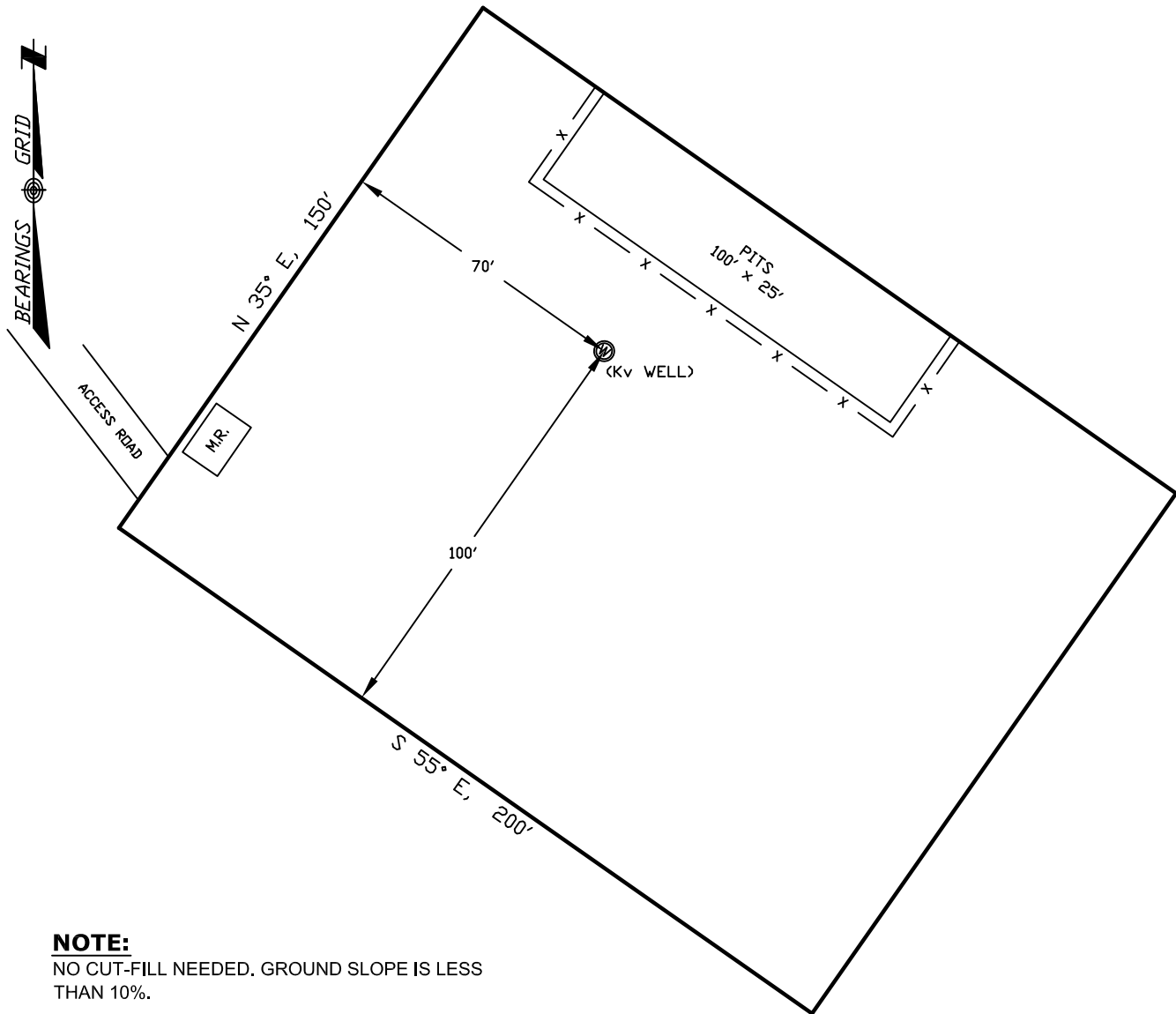


WELLSITE/PRODUCTION EQUIPMENT LAYOUT

OPERATOR: Pioneer Natural Resources

WELL NAME: DeBussy 24-29

SESW of SECTION 29 TOWNSHIP 33 S, RANGE 66 W OF THE 6TH P.M., IN LAS ANIMAS COUNTY



NOTE:

NO CUT-FILL NEEDED. GROUND SLOPE IS LESS THAN 10%.

NOTE:

MUD AND BLOW PITS WILL BE CONVERTED TO LINED EVAPORATION PITS FOR PRODUCTION.

WELLHEADS ARE TYPICALLY PCP DRIVE HEADS

GRAPHIC SCALE



(IN FEET)

1 inch = 40 ft.

LEGEND:

- = WELLHEAD
- = EXISTING WELLPAD
- = FENCE (4 STRAND)
- = 4" GAS GATHERING LINE
- = 2" WATER LINE
- M.R. = COMBO METER RUN AND WATER/GAS SEPERATOR
- G.D.S. = GAS DRIVE SYSTEM

July 05, 2011

Date Platted

SHIELDS SURVEY L^{td}. C^o.
Raton, New Mexico 87740
(575)445-1232