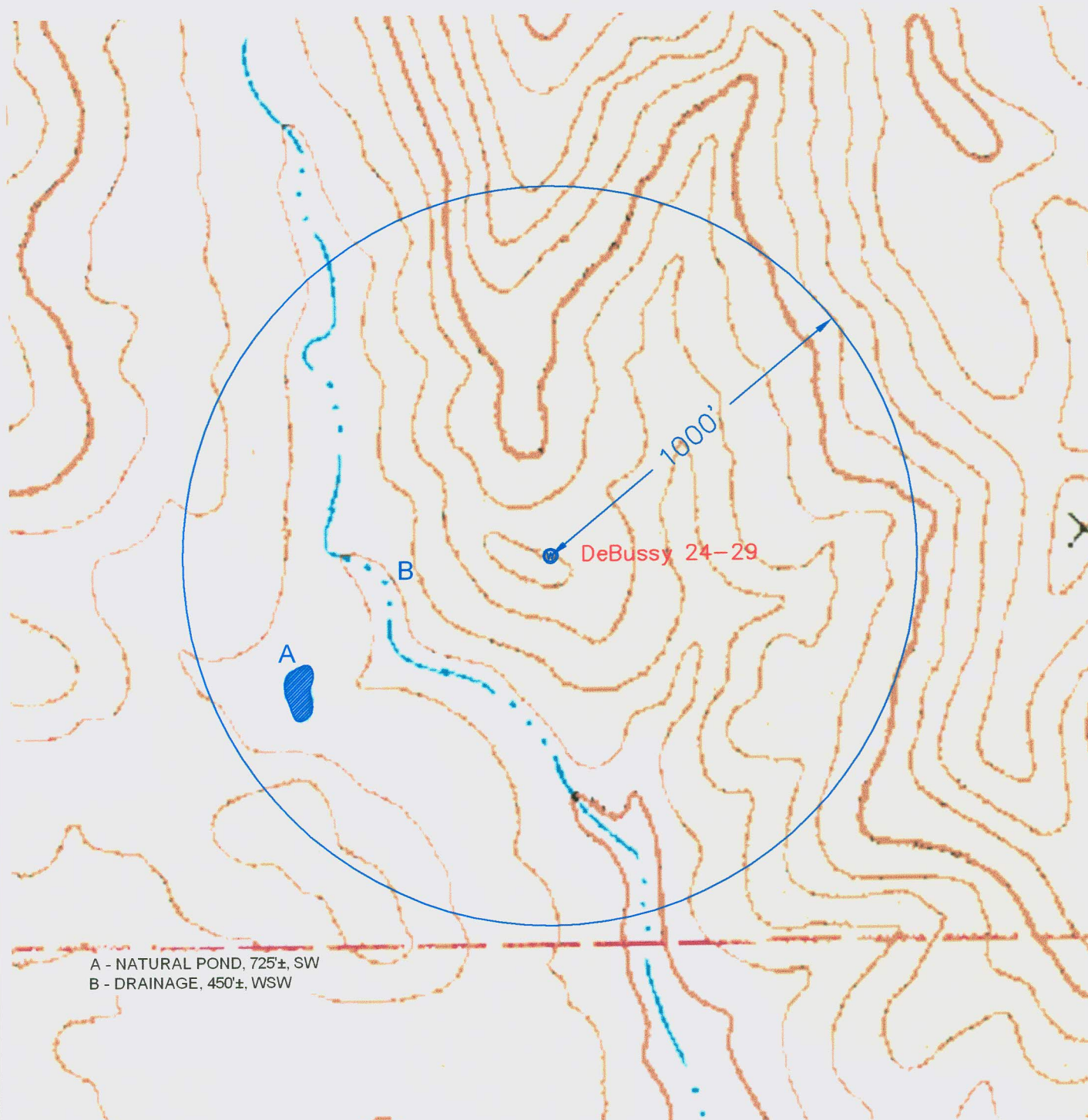


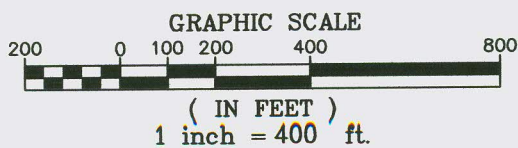
Hydrology for *DeBussy 24-29*



A - NATURAL POND, 725'±, SW
B - DRAINAGE, 450'±, WSW

NOTE:

FOOTAGES GIVEN ARE ONLY ESTIMATES BASED ON SUBDIVISION PLATS AND TIED TO EXISTING CONTROL. A FULL BOUNDARY SURVEY IS REQUIRED TO DETERMINE TRUE SUBDIVISION LOT AND ROAD LOCATIONS, DISTANCES AND AREA OR FOOTAGE CALCULATIONS.



Date: July 08, 2011

SHIELDS SURVEY Ltd. Co.

619 South 2nd Street

P.O. Box 639

Raton, New Mexico 87740

Phone: 445-1232 Fax: 445-3648