

STULTS 43-4  
TOWNSHIP 1 SOUTH, RANGE 45 WEST  
SECTION 4: NE1/4 SE1/4  
YUMA COUNTY, COLORADO

WELL FACING NORTH  
PICTURE DATED: 7/20/2011



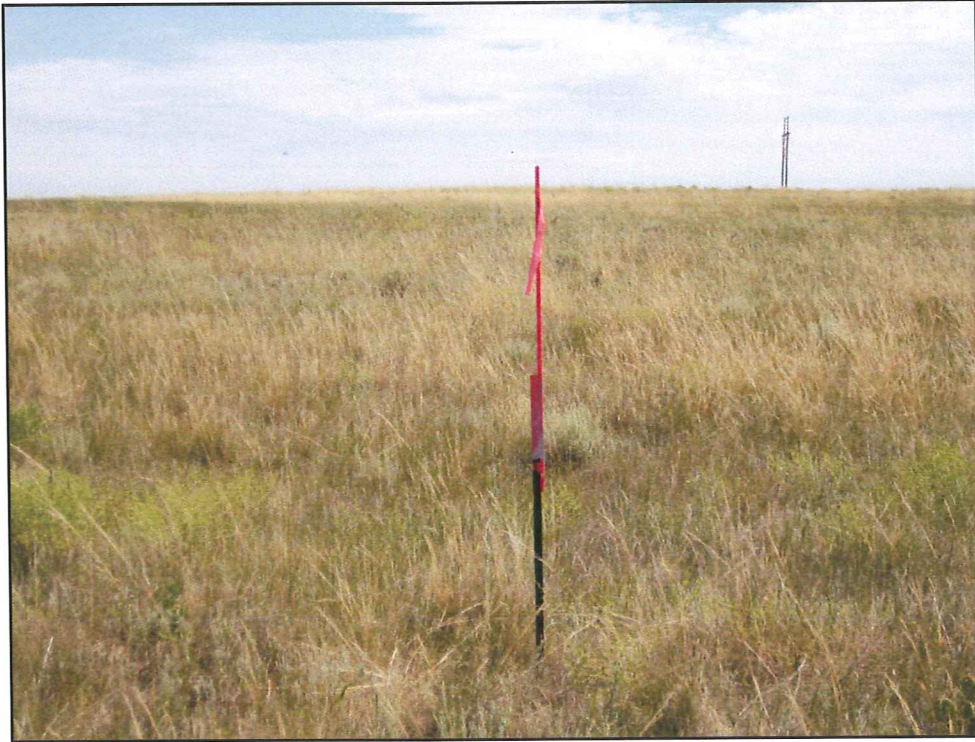
WELL FACING SOUTH  
PICTURE DATED: 7/20/2011





STULTS 43-4  
TOWNSHIP 1 SOUTH, RANGE 45 WEST  
SECTION 4: NE1/4 SE1/4  
YUMA COUNTY, COLORADO

WELL FACING EAST  
PICTURE DATED: 7/20/2011



WELL FACING WEST  
PICTURE DATED: 7/20/2011

