

# WELL LOCATION CERTIFICATE

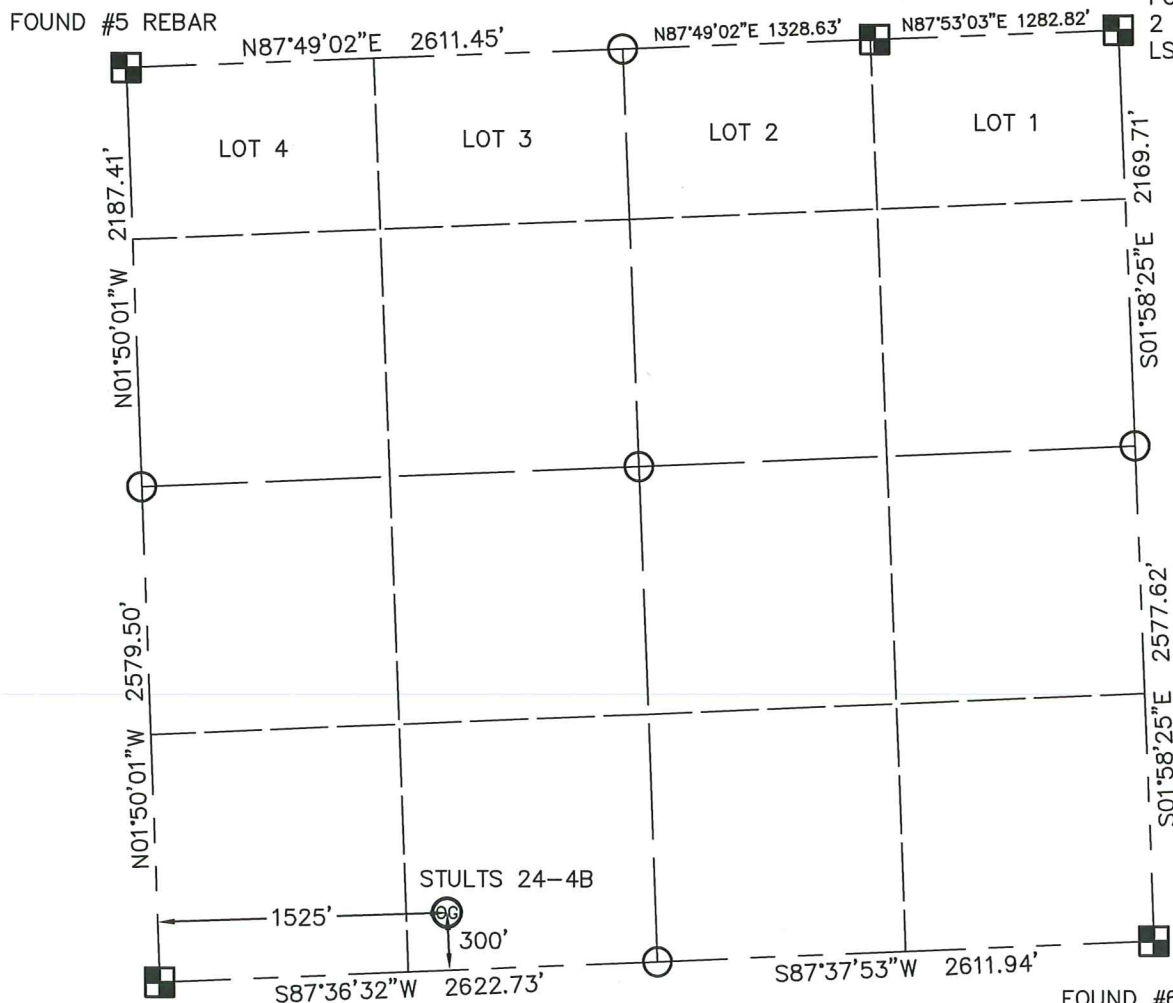
STULTS 24-4B

THIS MAP DOES NOT REPRESENT A BOUNDARY SURVEY

SECTION: 4  
TOWNSHIP: 1S  
RANGE: 45W

FOUND #6 REBAR WITH  
2 1/2" ALUMINUM CAP  
LS 19583, 1993

FOUND #6 REBAR WITH  
2 1/2" ALUMINUM CAP  
LS 26964, 2003



FOUND #6 REBAR WITH  
2" ALUMINUM CAP  
LS 23524, 2006

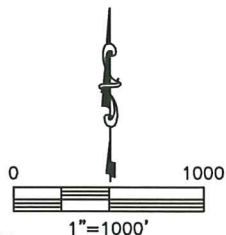
FOUND #6 REBAR WITH  
2 1/2" ALUMINUM CAP  
LS 26964, 2003

In accordance with a request from DAVID LEDEI with NOBLE ENERGY INC.

King Surveyors Inc. has determined the surface location of STULTS 24-4B to be 300' from the SOUTH line and 1525' from the WEST line, as measured at right angles, from the section lines of Section 4, Township 1 South, Range 45 West of the Sixth Principal Meridian, County of Yuma, State of Colorado.

I hereby state that this Well Location Certificate was prepared by me, or under my direct supervision, that the fieldwork was completed on 7-20-2011, for and on behalf of NOBLE ENERGY INC. That this is not a Land Survey Plat or an Improvement Survey Plat, and that it is not to be relied upon for establishment of fence, building, or other future improvement lines.

**SURFACE LOCATION**  
LATITUDE: 39.99072°N  
LONGITUDE: 102.42499°W  
PDOP: 1.2  
ELEV: 3888'  
1/4, 1/4: SE 1/4 SW 1/4  
NEAREST PROPERTY LINE: 300' SOUTH



**NOTE:**

- 1) Bearings shown are Grid Bearings of the Colorado State Plane Coordinate System, North Zone, North American Datum 1983/2007. The lineal dimensions as contained herein are based upon the "U.S. Survey Foot."
- 2) Ground elevations are based on an observed GPS elevation (NAVD 1988 DATUM).
- 3) IMPROVEMENTS: See LOCATION DRAWING exhibit for all visible improvements within 400' of disturbed area.
- 4) SURFACE USE: PASTURE
- 5) OPERATOR: BEN ADSIT

**LEGEND**

- = FOUND ALIQUOT MONUMENT AS DESCRIBED
- = CALCULATED POSITION (WITHOUT NOTES FOR COURT ORDERED RESURVEY)
- = SET ALIQUOT MONUMENT AS DESCRIBED

**NOTE:**

According to Colorado law, you must commence any legal action based upon any defect in this W.L.C. within three years after you discover such defect. In no event, may any action based upon any defect in this survey be commenced more than ten years after the date of the certificate shown hereon. (13-80-105 C.R.S.)

*Michael Chad Dilka* 8/24/2011  
Michael Chad Dilka — On Behalf Of King Surveyors, Inc.  
Colorado Licensed Professional Land Surveyor #38106  
PROJECT#: 2011299