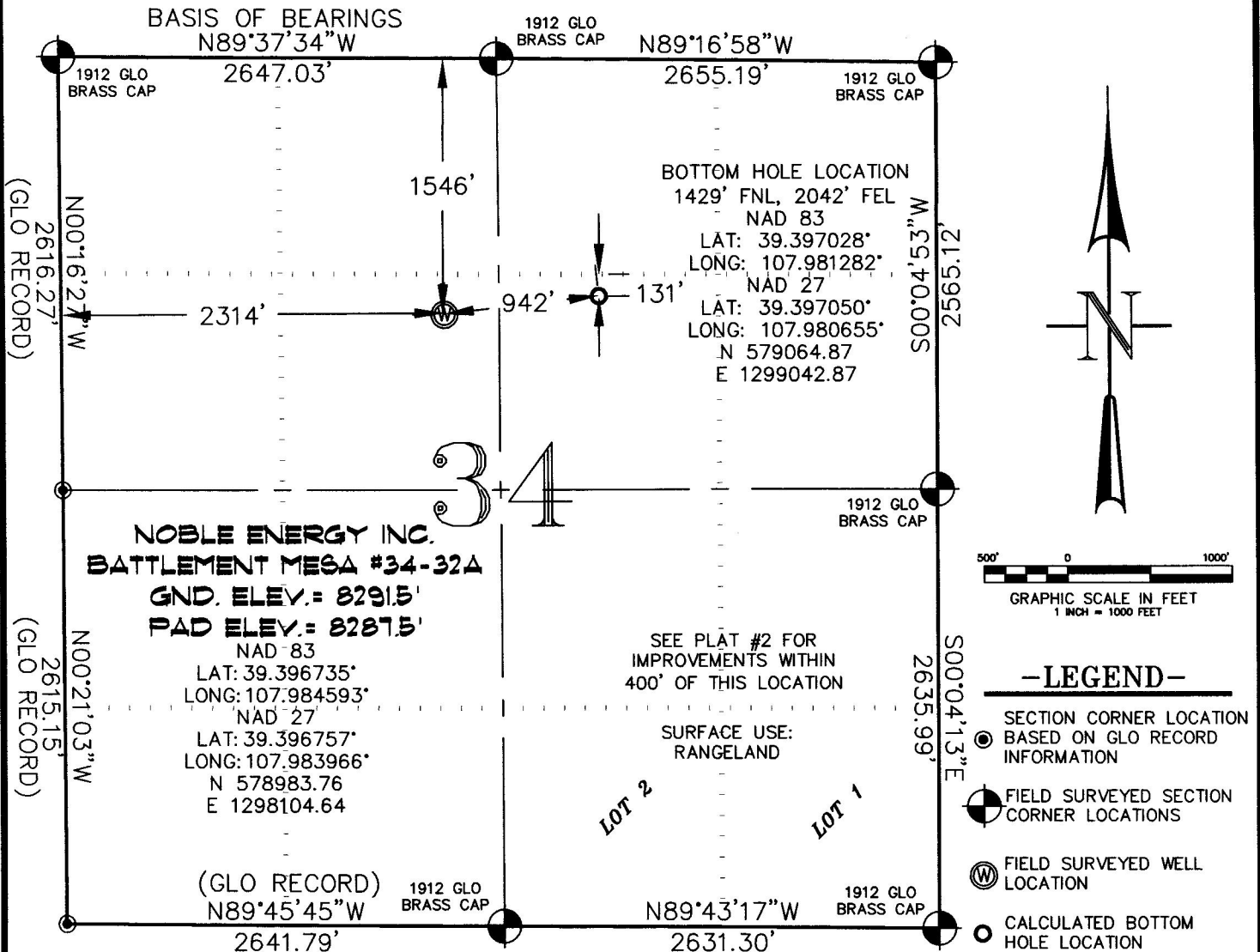


SEC. 34, T. 7 S., R. 95 W. OF THE 6TH P.M.

PLAT #1
LOCATION PLAT



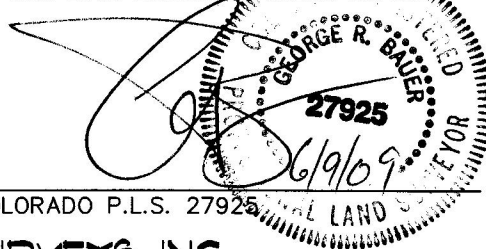
THIS WELL LOCATION PLAT WAS PREPARED FOR NOBLE ENERGY INC. TO LOCATE THE BATTLEMENT MESA #34-32A WELL, 1546 FEET FROM THE NORTH LINE AND 2314 FEET FROM THE WEST LINE IN THE SE1/4 NW1/4 OF SECTION 34, T. 7 S., R. 95 W. OF THE 6TH P.M. GARFIELD COUNTY, COLORADO.

REFERENCE NOTES

- 1) T. 7 S., R. 95 W., 6TH P.M. GLO PLAT.
- 2) U.S.G.S. QUAD: PARACHUTE, CO
- 3) ELEVATIONS BASED ON N.A.V.D. 1988
- 4) LATITUDES AND LONGITUDES ARE BASED ON NAD 83, COLORADO CENTRAL ZONE.
- 5) GPS OPERATOR ROBERT WOOD, OBSERVED A PDOP OF 2.7.
- 6) ALL GPS OBSERVATIONS ARE IN COMPLIANCE WITH COGCC RULE NO. 215.
- 7) SURFACE AND BOTTOM HOLE LOCATIONS ARE MEASURED 90° FROM SECTION LINES.

SURVEYOR'S CERTIFICATE

I, George R. Bauer: a Professional Land Surveyor in the State of Colorado do hereby certify that this Survey was made under my direct supervision, that this Plat represents said Survey and the location has been staked as shown hereon.



COLORADO P.L.S. 27925



CONSTRUCTION SURVEYS, INC.
0012 SUNRISE BLVD.
SILT, CO 81652
(970)876-5753

VIEW: 1K

SURVEYED: 01/10/08	SCALE: 1" = 1000'
DRAFTED: 06/05/09	DWG: NOBLE\2006\BM 34F
CHECKED: 06/08/09	SHEET: 1 of 9