
COMET RIDGE USA INC

Mackinaw 12-28
AFE 10315D CODE 300-520
VERMEJO RANCH
Fremont County , Colorado

Cement Surface Casing
06-Apr-2011

Job Site Documents

The Road to Excellence Starts with Safety

Sold To #: 352220	Ship To #: 2846877	Quote #:	Sales Order #: 8080184
Customer: COMET RIDGE USA INC		Customer Rep:	
Well Name: Mackinaw		Well #: 12-28	API/UWI #: 05-043-06201
Field: VERMEJO RANCH	City (SAP): FLORENCE	County/Parish: Fremont	State: Colorado
Contractor: ?		Rig/Platform Name/Num: ?	
Job Purpose: Cement Surface Casing			
Well Type: Development Well		Job Type: Cement Surface Casing	
Sales Person: PETERSON, ERIC	Srv Supervisor: ROSALES, MATTHEW		MBU ID Emp #: 392095

Job Personnel

HES Emp Name	Exp Hrs	Emp #	HES Emp Name	Exp Hrs	Emp #	HES Emp Name	Exp Hrs	Emp #
BULINSKI, MATTHEW J	4	483865	MAHONEY, KELLAN Carl	4	476531	ROSALES, MATTHEW John	4	392095
WARD, SAMUEL Winfield	4	478713						

Equipment

HES Unit #	Distance-1 way	HES Unit #	Distance-1 way	HES Unit #	Distance-1 way	HES Unit #	Distance-1 way
10829456	180 mile	11019824C	180 mile	11036295C	180 mile	11362287C	180 mile

Job Hours

Date	On Location Hours	Operating Hours	Date	On Location Hours	Operating Hours	Date	On Location Hours	Operating Hours
04/06/11	4	2						

TOTAL Total is the sum of each column separately

Job				Job Times			
Formation Name				Date	Time	Time Zone	
Formation Depth (MD)	Top	Bottom		Called Out	06 - Apr - 2011	05:30	MST
Form Type	BHST			On Location	06 - Apr - 2011	12:00	MST
Job depth MD	620. ft		Job Depth TVD	620. ft	Job Started	06 - Apr - 2011	13:47
Water Depth	Wk Ht Above Floor			Job Completed	06 - Apr - 2011	14:35	MST
Perforation Depth (MD)	From	To		Departed Loc	06 - Apr - 2011	16:00	MST

Well Data

Description	New / Used	Max pressure psig	Size in	ID in	Weight lbm/ft	Thread	Grade	Top MD ft	Bottom MD ft	Top TVD ft	Bottom TVD ft
Open Hole				12.25					620.		
Surface Casing	Unknown		8.625	8.097	24.		J-55		611.5		

Tools and Accessories

Type	Size	Qty	Make	Depth	Type	Size	Qty	Make	Depth	Type	Size	Qty	Make
Guide Shoe					Packer					Top Plug			
Float Shoe					Bridge Plug					Bottom Plug			
Float Collar					Retainer					SSR plug set			
Insert Float										Plug Container			
Stage Tool										Centralizers			

Miscellaneous Materials

Gelling Agt	Conc	Surfactant	Conc	Acid Type	Qty	Conc	%
Treatment Fld	Conc	Inhibitor	Conc	Sand Type	Size	Qty	

Fluid Data

Stage/Plug #: 1										
Fluid #	Stage Type	Fluid Name	Qty	Qty uom	Mixing Density lbm/gal	Yield ft3/sk	Mix Fluid Gal/sk	Rate bbl/min	Total Mix Fluid Gal/sk	

Stage/Plug #: 1

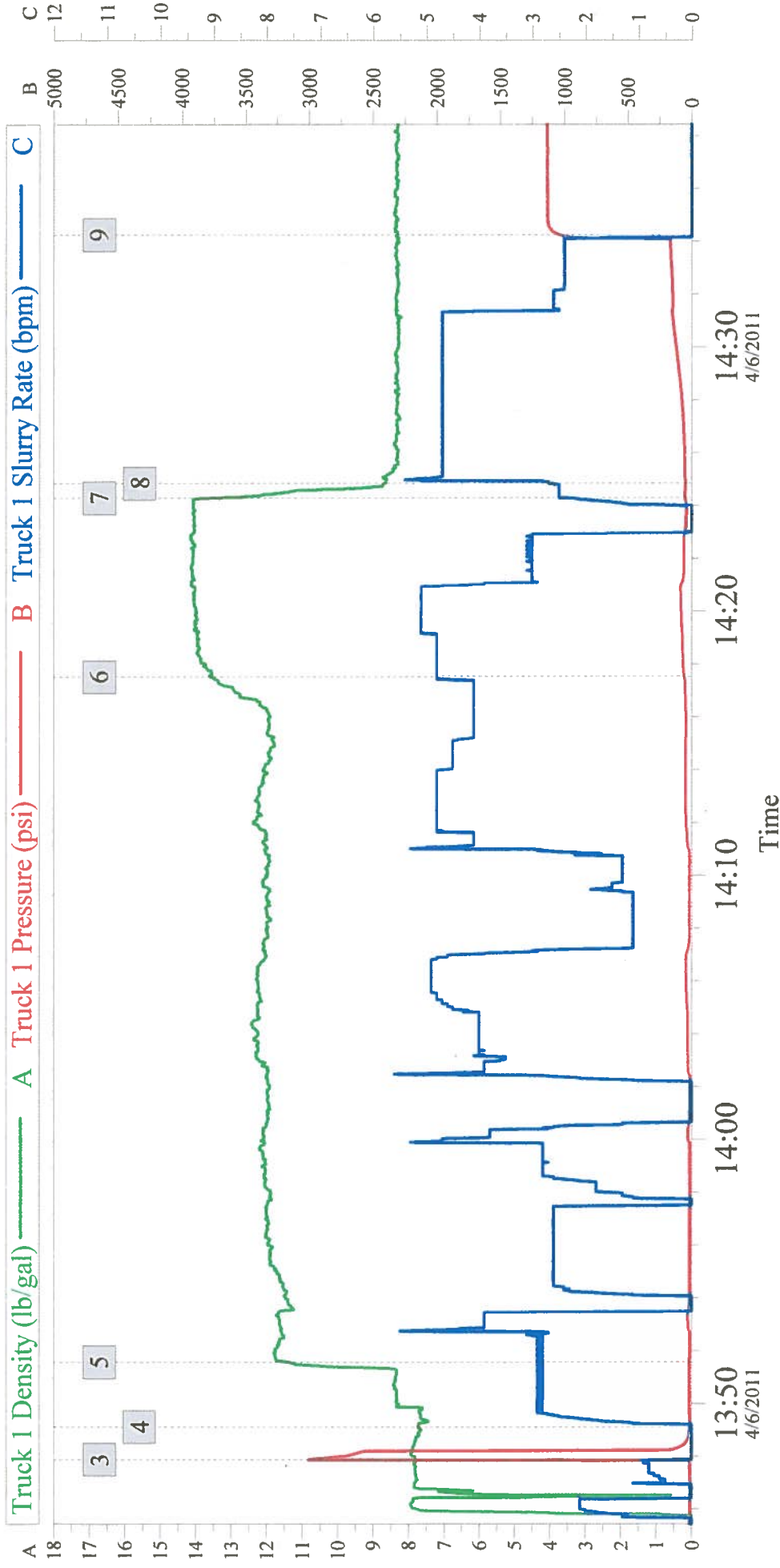
The Road to Excellence Starts with Safety

Sold To #: 352220		Ship To #: 2846877		Quote #:		Sales Order #: 8080184	
Customer: COMET RIDGE USA INC				Customer Rep:			
Well Name: Mackinaw			Well #: 12-28		API/UWI #: 05-043-06201		
Field: VERMEJO RANCH		City (SAP): FLORENCE		County/Parish: Fremont		State: Colorado	
Legal Description:							
Lat: N 0 deg. OR N 0 deg. 0 min. 0 secs.				Long: E 0 deg. OR E 0 deg. 0 min. 0 secs.			
Contractor: ?			Rig/Platform Name/Num: ?				
Job Purpose: Cement Surface Casing					Ticket Amount:		
Well Type: Development Well			Job Type: Cement Surface Casing				
Sales Person: PETERSON, ERIC			Srv Supervisor: ROSALES, MATTHEW/MBU ID Emp #: 392095				

Activity Description	Date/Time	Cht #	Rate bbl/ min	Volume bbl		Pressure psig		Comments
				Stage	Total	Tubing	Casing	
Call Out	04/06/2011 05:30							
Pre-Convoy Safety Meeting	04/06/2011 08:00							
Depart from Service Center or Other Site	04/06/2011 08:10							
Arrive At Loc	04/06/2011 12:00							
Assessment Of Location Safety Meeting	04/06/2011 12:05							
Other	04/06/2011 12:10							SPOT TRUCKS
Pre-Rig Up Safety Meeting	04/06/2011 12:20							
Rig-Up Equipment	04/06/2011 12:25							
Rig-Up Completed	04/06/2011 13:00							
Pre-Job Safety Meeting	04/06/2011 13:20							
Start Job	04/06/2011 13:47							
Pump Water	04/06/2011 13:47		1		1		45.0	FILL LINES
Test Lines	04/06/2011 13:47		0.5		0.5		3000. 0	
Pump Spacer 1	04/06/2011 13:49		5		5		100.0	WATER SPACER
Pump Lead Cement	04/06/2011 13:51		5		58		25.0	12#/GAL CEMENT MIXED WITH WATER PROVIDED BY RIG
Pump Tail Cement	04/06/2011 14:17		5		26		25.0	14#/GAL CEMENT MIXED WITH WATER PROVIDED BY RIG, WELL CIRCULATED @ 20BBL TAIL CMT AWAY

Activity Description	Date/Time	Cht #	Rate bbl/ min	Volume bbl		Pressure psig		Comments
				Stage	Total	Tubing	Casing	
Drop Bottom Plug	04/06/2011 14:24							
Shutdown	04/06/2011 14:24							
Pump Displacement	04/06/2011 14:24		5		37.5		160.0	12BBL CEMENT TO THE PIT
Bump Plug	04/06/2011 14:34		2.5				1035. 0	
Check Floats	04/06/2011 14:39							FLOATS DID NOT HOLD, WELL SHUT IN AT MANIFOLD
End Job	04/06/2011 14:40							
Pre-Rig Down Safety Meeting	04/06/2011 14:45							
Rig-Down Equipment	04/06/2011 14:50							
Rig-Down Completed	04/06/2011 15:50							
Pre-Convoy Safety Meeting	04/06/2011 15:55							
Depart Location for Service Center or Other Site	04/06/2011 16:00							

COMET RIDGE USA - MACKINAW 12-28 AFE 10315D 300-520 8 5/8" SURFACE



Global Event Log											
Intersection		T1P	Intersection		T1P						
3	Test Lines	13:47:53	3000	4	Pump Spacer 1	13:49:07	14.00	5	Pump Lead Cement	13:51:34	18.00
6	Pump Tail Cement	14:17:31	60.82	7	Drop Top Plug	14:24:17	51.49	8	Pump Displacement	14:24:50	49.00
9	Bump Plug	14:34:15	1035								

Stage/Plug #: 1									
Fluid #	Stage Type	Fluid Name	Qty	Qty uom	Mixing Density lbm/gal	Yield ft ³ /sk	Mix Fluid Gal/sk	Rate bbl/min	Total Mix Fluid Gal/sk
1	Water Spacer			bbl	8.34	.0	.0	4.0	
2	Trinidad Surface Blend 12#	TRINIDAD SURFACE BLEND - SBM (137081)	125.0	sacks	12.	2.62	14.52	5.0	14.52
	0.125 lbm	POLY-E-FLAKE (101216940)							
	5 lbm	KOL-SEAL, 50 LB BAG (100064232)							
	14.52 Gal	FRESH WATER							
3	Trinidad Surface Blend 14#	TRINIDAD SURFACE BLEND - SBM (137081)	87.0	sacks	14.	1.67	7.93		7.93
	0.125 lbm	POLY-E-FLAKE (101216940)							
	5 lbm	KOL-SEAL, 50 LB BAG (100064232)							
	7.93 Gal	FRESH WATER							
4	Premium 15.8#	CMT - PREMIUM - CLASS G, 94 LB SK (100003685)		sacks	15.8	1.17	5.02		5.02
	94 lbm	CMT - PREMIUM - CLASS G REG OR TYPE V, BULK (100003685)							
	2 %	CALCIUM CHLORIDE, PELLET, 50 LB (101509387)							
	5.02 Gal	FRESH WATER							
Calculated Values		Pressures		Volumes					
Displacement	37.5	Shut In: Instant		Lost Returns		Cement Slurry		Pad	
Top Of Cement	SURFACE	5 Min		Cement Returns	12BBL	Actual Displacement		Treatment	
Frac Gradient		15 Min		Spacers		Load and Breakdown		Total Job	
Rates									
Circulating		Mixing	5	Displacement	5	Avg. Job			5
Cement Left In Pipe	Amount	0 ft	Reason	Shoe Joint					
Frac Ring # 1 @	ID	Frac ring # 2 @	ID	Frac Ring # 3 @	ID	Frac Ring # 4 @	ID		
The Information Stated Herein Is Correct				Customer Representative Signature					