



<b>Sold To #:</b> 352220		<b>Ship To #:</b> 2848590		<b>Quote #:</b>		<b>Sales Order #:</b> 8102083	
<b>Customer:</b> COMET RIDGE USA INC				<b>Customer Rep:</b>			
<b>Well Name:</b> Buck Garrett			<b>Well #:</b> 12-9		<b>API/UWI #:</b>		
<b>Field:</b> VERMEJO RANCH		<b>City (SAP):</b> FLORENCE		<b>County/Parish:</b> Fremont		<b>State:</b> Colorado	
<b>Contractor:</b> PENSE			<b>Rig/Platform Name/Num:</b> ?				
<b>Job Purpose:</b> Cement Surface Casing							
<b>Well Type:</b> Development Well			<b>Job Type:</b> Cement Surface Casing				
<b>Sales Person:</b> FLING, MATTHEW			<b>Srvc Supervisor:</b> SANFORD, DALE			<b>MBU ID Emp #:</b> 219527	

HES Emp Name	Exp Hrs	Emp #	HES Emp Name	Exp Hrs	Emp #	HES Emp Name	Exp Hrs	Emp #
BANUELOS, GUADALUPE	3	372277	COPELAND, GEORGE Willard	3	429242	DIRKS, RICHARD E	3	485940
SANFORD, DALE A	3	219527						

HES Unit #	Distance-1 way	HES Unit #	Distance-1 way	HES Unit #	Distance-1 way	HES Unit #	Distance-1 way
10248053C	145 mile	11019824	145 mile	11398490	145 mile	11518550	145 mile

[illegible]


Formation Name						Date	Time	Time Zone
Formation Depth (MD)	Top		Bottom		Called Out	13 - Apr - 2011	08:00	MST
Form Type			BHST		On Location	13 - Apr - 2011	15:00	MST
Job depth MD	820. ft		Job Depth TVD	820. ft	Job Started	13 - Apr - 2011	16:17	MST
Water Depth			Wk Ht Above Floor		Job Completed	13 - Apr - 2011	17:17	MST
Perforation Depth (MD)	From		To		Departed Loc	13 - Apr - 2011	18:00	MST

Description	New / Used	Max pressure psig	Size in	ID in	Weight lbm/ft	Thread	Grade	Top MD ft	Bottom MD ft	Top TVD ft	Bottom TVD ft
Open Hole				12.25				.	830.		
Surface Casing	Unknown		9.625	8.097			J-55	.	820.		

Type	Size	Qty	Make	Depth	Type	Size	Qty	Make	Depth	Type	Size	Qty	Make
Guide Shoe					Packer					Top Plug			
Float Shoe					Bridge Plug					Bottom Plug			
Float Collar					Retainer					SSR plug set			
Insert Float										Plug Container			
Stage Tool										Centralizers			

Gelling Agt	Conc	Surfactant	Conc	Acid Type	Qty	Conc	%
Treatment Fld	Conc	Inhibitor	Conc	Sand Type	Size	Qty	

Stage/Plug #: 1									
Fluid #	Stage Type	Fluid Name	Qty	Qty uom	Mixing Density lbm/gal	Yield ft3/sk	Mix Fluid Gal/sk	Rate bbl/min	Total Mix Fluid Gal/sk

Stage/Plug #: 1									
Fluid #	Stage Type	Fluid Name	Qty	Qty uom	Mixing Density lbm/gal	Yield ft <sup>3</sup> /sk	Mix Fluid Gal/sk	Rate bbl/min	Total Mix Fluid Gal/sk
1	Water Spacer		5.00	bbl	8.34	.0	.0	4.0	
2	Trinidad Surface Blend 12#	TRINIDAD SURFACE BLEND - SBM (137081)	140.0	sacks	12.	2.62	14.5	5.0	14.5
	0.125 lbm	POLY-E-FLAKE (101216940)							
	14.5 Gal	FRESH WATER							
3	Trinidad Surface Blend 14#	TRINIDAD SURFACE BLEND - SBM (137081)	75.0	sacks	14.	1.67	7.93		7.93
	0.125 lbm	POLY-E-FLAKE (101216940)							
	7.93 Gal	FRESH WATER							
4	Premium 15.8#	CMT - PREMIUM - CLASS G, 94 LB SK (100003685)		sacks	15.8	1.17	5.02		5.02
	94 lbm	CMT - PREMIUM - CLASS G REG OR TYPE V, BULK (100003685)							
	2 %	CALCIUM CHLORIDE, PELLET, 50 LB (101509387)							
	5.02 Gal	FRESH WATER							
Calculated Values		Pressures		Volumes					
Displacement	61	Shut In: Instant	190	Lost Returns	no	Cement Slurry		Pad	
Top Of Cement	surf	5 Min		Cement Returns	21	Actual Displacement		Treatment	
Frac Gradient		15 Min		Spacers	5	Load and Breakdown		Total Job	
Rates									
Circulating	4	Mixing	5	Displacement	5	Avg. Job	5		
Cement Left In Pipe	Amount	40 ft	Reason	Shoe Joint					
Frac Ring # 1 @	ID	Frac ring # 2 @	ID	Frac Ring # 3 @	ID	Frac Ring # 4 @	ID		
The Information Stated Herein Is Correct				Customer Representative Signature 					

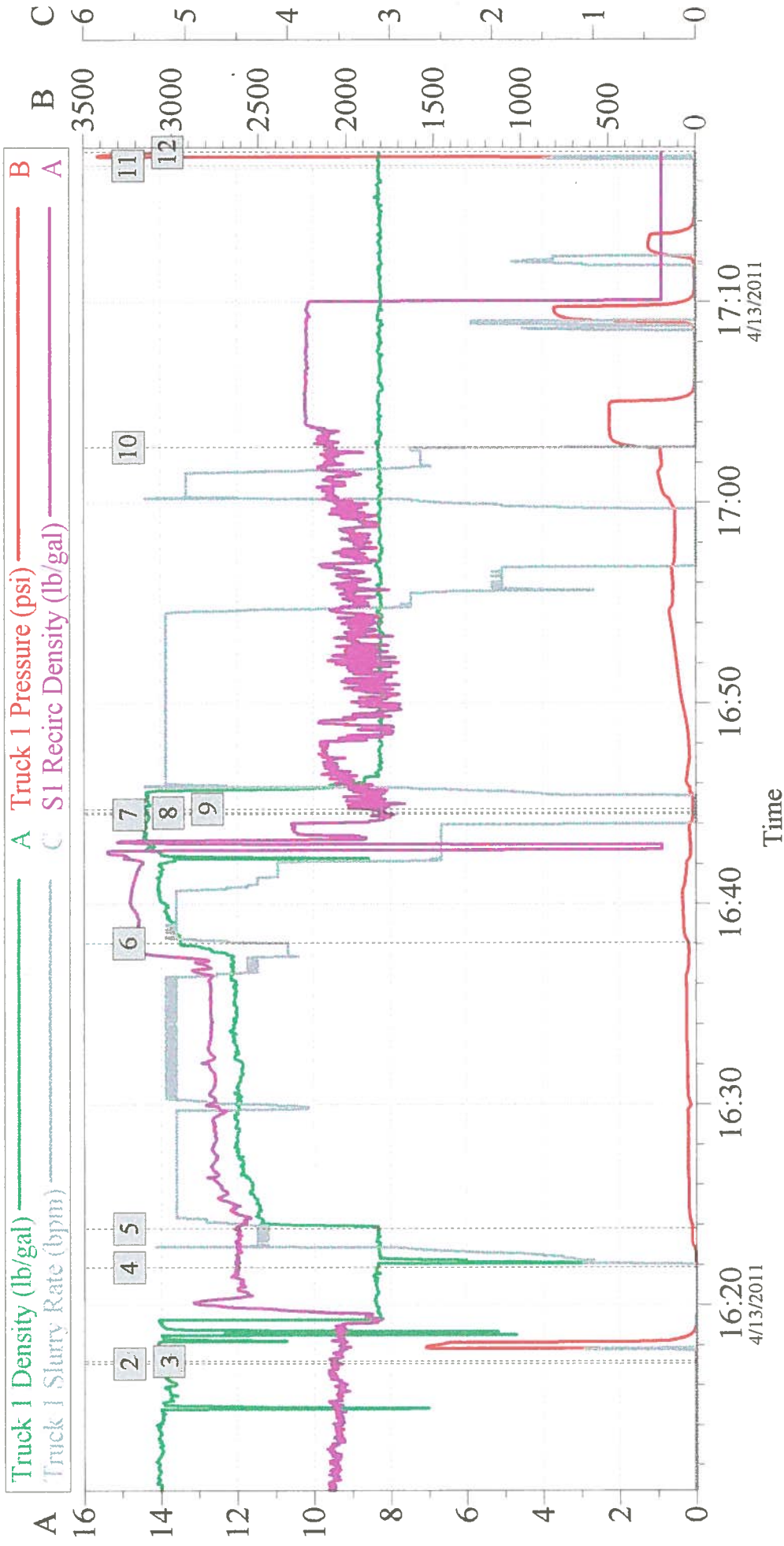
*The Road to Excellence Starts with Safety*

Sold To #: 352220		Ship To #: 2848590		Quote #:		Sales Order #: 8102083	
Customer: COMET RIDGE USA INC				Customer Rep:			
Well Name: Buck Garrett			Well #: 12-9			API/UWI #:	
Field: VERMEJO RANCH		City (SAP): FLORENCE		County/Parish: Fremont		State: Colorado	
Legal Description:							
Lat:				Long:			
Contractor: PENSE			Rig/Platform Name/Num: ?				
Job Purpose: Cement Surface Casing						Ticket Amount:	
Well Type: Development Well			Job Type: Cement Surface Casing				
Sales Person: FLING, MATTHEW			Srv Supervisor: SANFORD, DALE			MBU ID Emp #: 219527	

Activity Description	Date/Time	Cht #	Rate bbl/min	Volume bbl		Pressure psig		Comments
				Stage	Total	Tubing	Casing	
Test Lines	04/13/2011 16:17							
Pump Spacer 1	04/13/2011 16:21		4	5			50.0	Water
Pump Lead Cement	04/13/2011 16:23		5	66			50.0	140 Sks Cmt @ 12#
Pump Tail Cement	04/13/2011 16:38		5	22			50.0	75 Sks @ 14#
Drop Top Plug	04/13/2011 16:44							
Pump Displacement	04/13/2011 16:44		5	61			200.0	Water 21 Bbl Good Cmt To Pit
Bump Plug	04/13/2011 17:02		3				500.0	Float did not hold
Bump Plug	04/13/2011 17:06		2				700.0	No
Bump Plug	04/13/2011 17:07		2				150.0	Shut in well
Shut In Well	04/13/2011 17:12						150.0	



# Comet Ridge Buck Garrett 1-9 Surface



## Global Event Log

1	Starting Job	16:03:07	2	Start Job	16:17:06	3	Test Lines	16:17:12
4	Pump Spacer 1	16:21:53	5	Pump Lead Cement	16:23:49	6	Pump Tail Cement	16:38:03
7	Shutdown	16:44:28	8	Drop Plug	16:44:33	9	Pump Displacement	16:44:44
10	Bump Plug	17:02:46	11	End Job	17:16:50	12	Ending Job	17:17:30

Customer: Comet Ridge

Well Description: 9 5/8 surf

Job Date: 13-Apr-2011

UWI:

Sales Order #: 8102083